


113°45'W 113°43'W 113°41'W 113°39'W 113°37'W 113°35'W 113°33'W 113°31'W 113°29'W 113°27'W 113°25'W

Air Ops Map

Whetstone Meyers Fire

MT-BDF-002213
July 27, 2017 0600

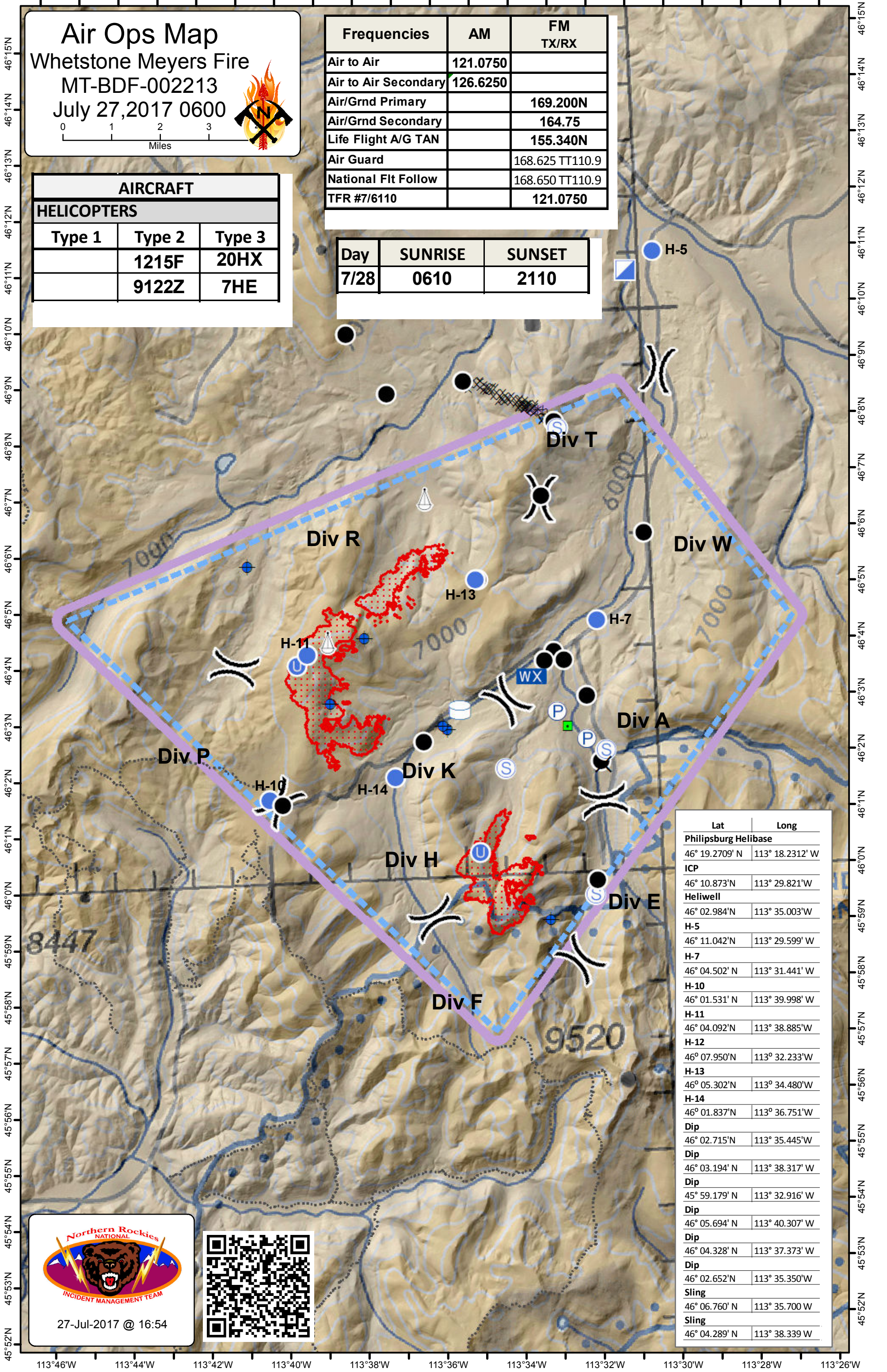


0 1 2 3 Miles

Frequencies	AM	FM TX/RX
Air to Air	121.0750	
Air to Air Secondary	126.6250	
Air/Grnd Primary		169.200N
Air/Grnd Secondary		164.75
Life Flight A/G TAN		155.340N
Air Guard		168.625 TT110.9
National Flt Follow		168.650 TT110.9
TFR #7/6110		121.0750

AIRCRAFT		
HELICOPTERS		
Type 1	Type 2	Type 3
	1215F	20HX
	9122Z	7HE

Day	SUNRISE	SUNSET
7/28	0610	2110



Lat	Long
Philipsburg Helibase	
46° 19.2709' N	113° 18.2312' W
ICP	
46° 10.873' N	113° 29.821' W
Heliwell	
46° 02.984' N	113° 35.003' W
H-5	
46° 11.042' N	113° 29.599' W
H-7	
46° 04.502' N	113° 31.441' W
H-10	
46° 01.531' N	113° 39.998' W
H-11	
46° 04.092' N	113° 38.885' W
H-12	
46° 07.950' N	113° 32.233' W
H-13	
46° 05.302' N	113° 34.480' W
H-14	
46° 01.837' N	113° 36.751' W
Dip	
46° 02.715' N	113° 35.445' W
Dip	
46° 03.194' N	113° 38.317' W
Dip	
45° 59.179' N	113° 32.916' W
Dip	
46° 05.694' N	113° 40.307' W
Dip	
46° 04.328' N	113° 37.373' W
Dip	
46° 02.652' N	113° 35.350' W
Sling	
46° 06.760' N	113° 35.700' W
Sling	
46° 04.289' N	113° 38.339' W



27-Jul-2017 @ 16:54



113°46'W 113°44'W 113°42'W 113°40'W 113°38'W 113°36'W 113°34'W 113°32'W 113°30'W 113°28'W 113°26'W