

Whetstone Ridge & Meyers Fires

MT-BDF-002213-002217

July 30, 2017

Day Shift

1,077 Acres (Meyers)

2,241 Acres (Whetstone Ridge)

as of 07/29/2017

at 0046 hrs

UTM NAD83 Zone 12

Page 1 of 12

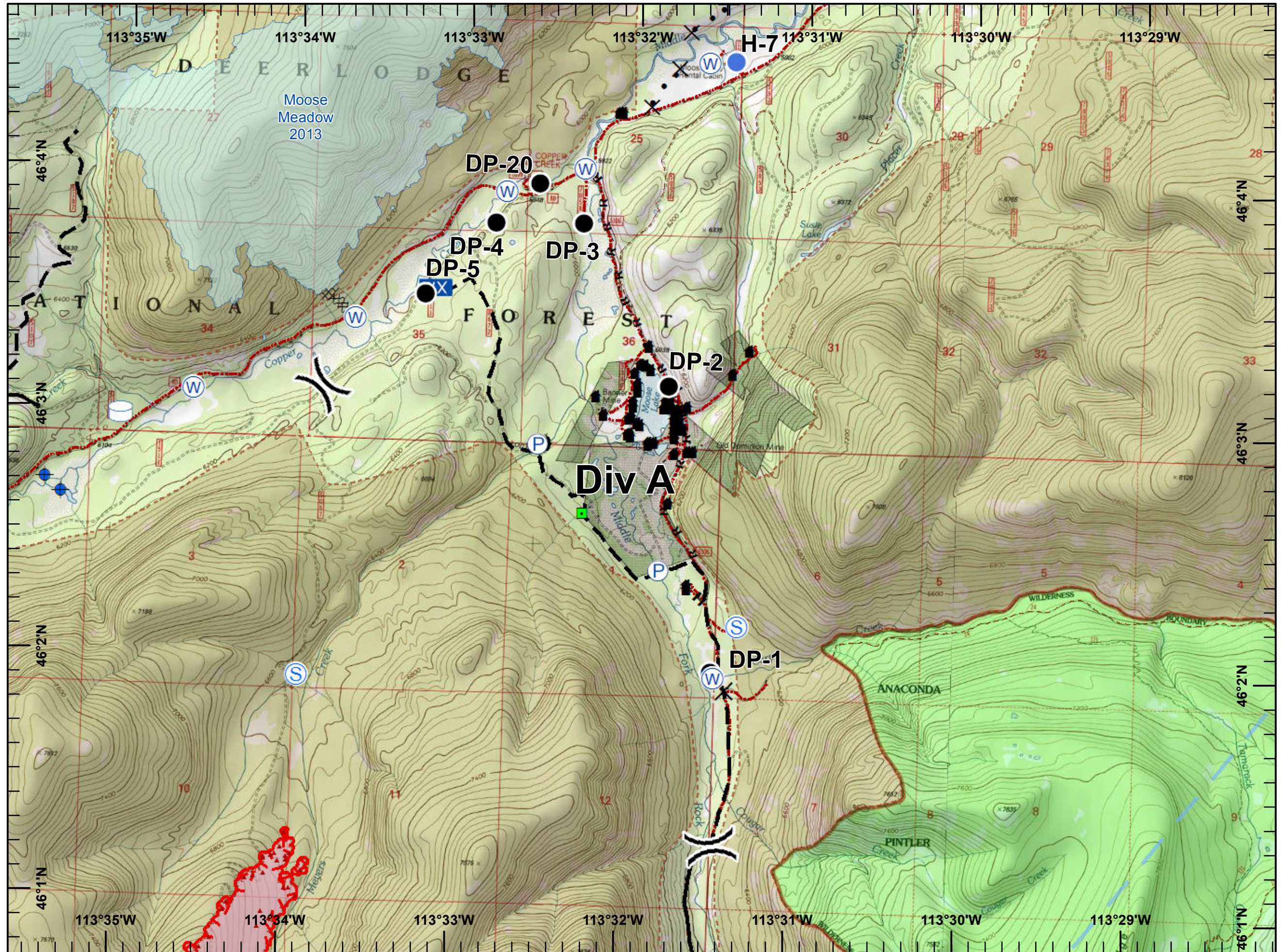
Div A

Legend



- Closure
- Dip Site
- Drop Point
- Helispot
- IR Isolated Heat Source
- Landmark
- Mobile Weather Unit
- Pump
- Staging Area
- Water Source
- Water Tank
- Division Break

- Uncontrolled Fire Edge
- Completed Line
- Completed Dozer Line
- Completed Hand Line
- Road as Completed Line
- Proposed Dozer Line
- Planned Fire Line
- Wildfire Daily Fire Perimeter
- Temporary Flight Restriction
- Fire History
- Structure
- Roads
- Trails
- Inventoried Roadless Area
- Wilderness



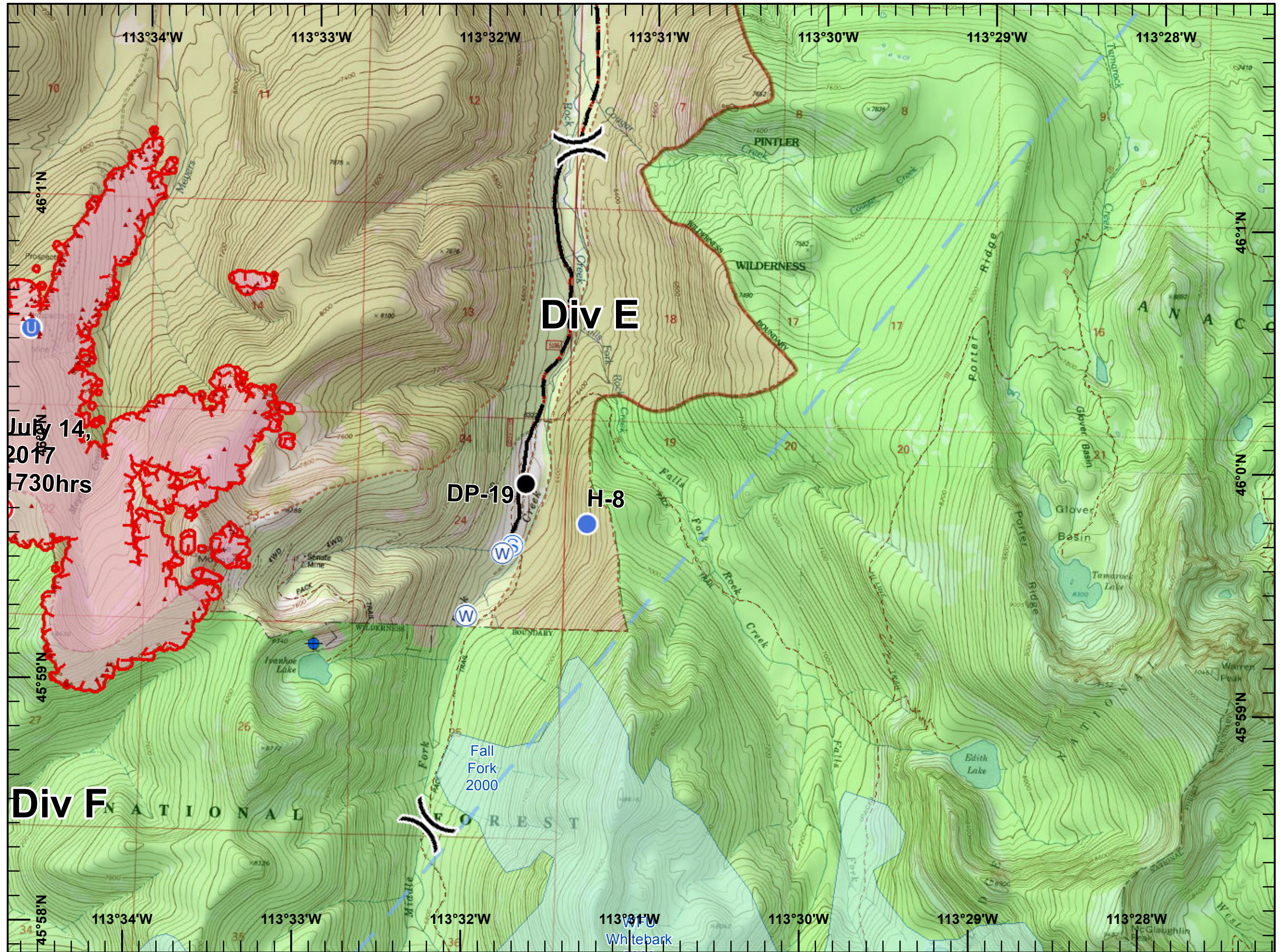
Whetstone Ridge & Meyers Fires

MT-BDF-002213-002217
 July 30, 2017
 Day Shift
 1,077 Acres (Meyers)
 2,241 Acres (Whetstone Ridge)
 as of 07/29/2017
 at 0046 hrs
 UTM NAD83 Zone 12
 Page 2 of 12
 Div E



Legend

- Dip Site
- Drop Point
- Fire Origin
- Unimproved Landing Area
- Helispot
- IR Isolated Heat Source
- Staging Area
- Water Source
- Division Break
- Uncontrolled Fire Edge
- Completed Line
- Planned Fire Line
- Wildfire Daily Fire Perimeter
- Temporary Flight Restriction
- Fire History
- Structure
- Roads
- Trails
- Inventoried Roadless Area
- Wilderness












Whetstone Ridge & Meyers Fires

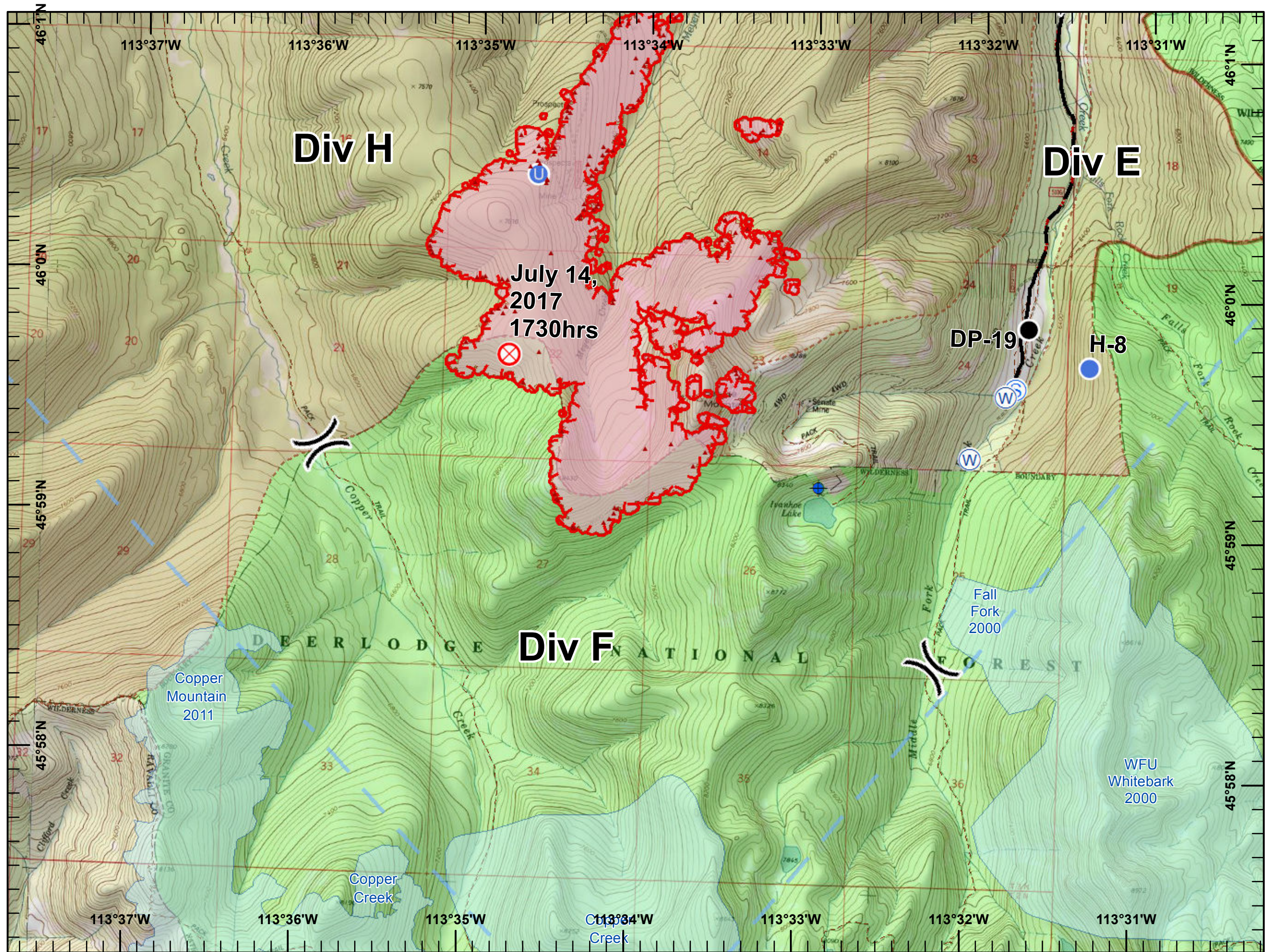
MT-BDF-002213-002217
 July 30, 2017
 Day Shift
 1,077 Acres (Meyers)
 2,241 Acres (Whetstone Ridge)
 as of 07/29/2017
 at 0046 hrs
 UTM NAD83 Zone 12
 Page 3 of 12
 Div F



Legend

-  Dip Site
-  Drop Point
-  Fire Origin
-  Unimproved Landing Area
-  Helispot
-  IR Isolated Heat Source
-  Staging Area
-  Water Source
-  Division Break

-  Uncontrolled Fire Edge
-  Completed Line
-  Planned Fire Line
-  Wildfire Daily Fire Perimeter
-  Temporary Flight Restriction
-  Fire History
-  Structure
-  Roads
-  Trails
-  Inventoried Roadless Area
-  Wilderness



Whetstone Ridge & Meyers Fires

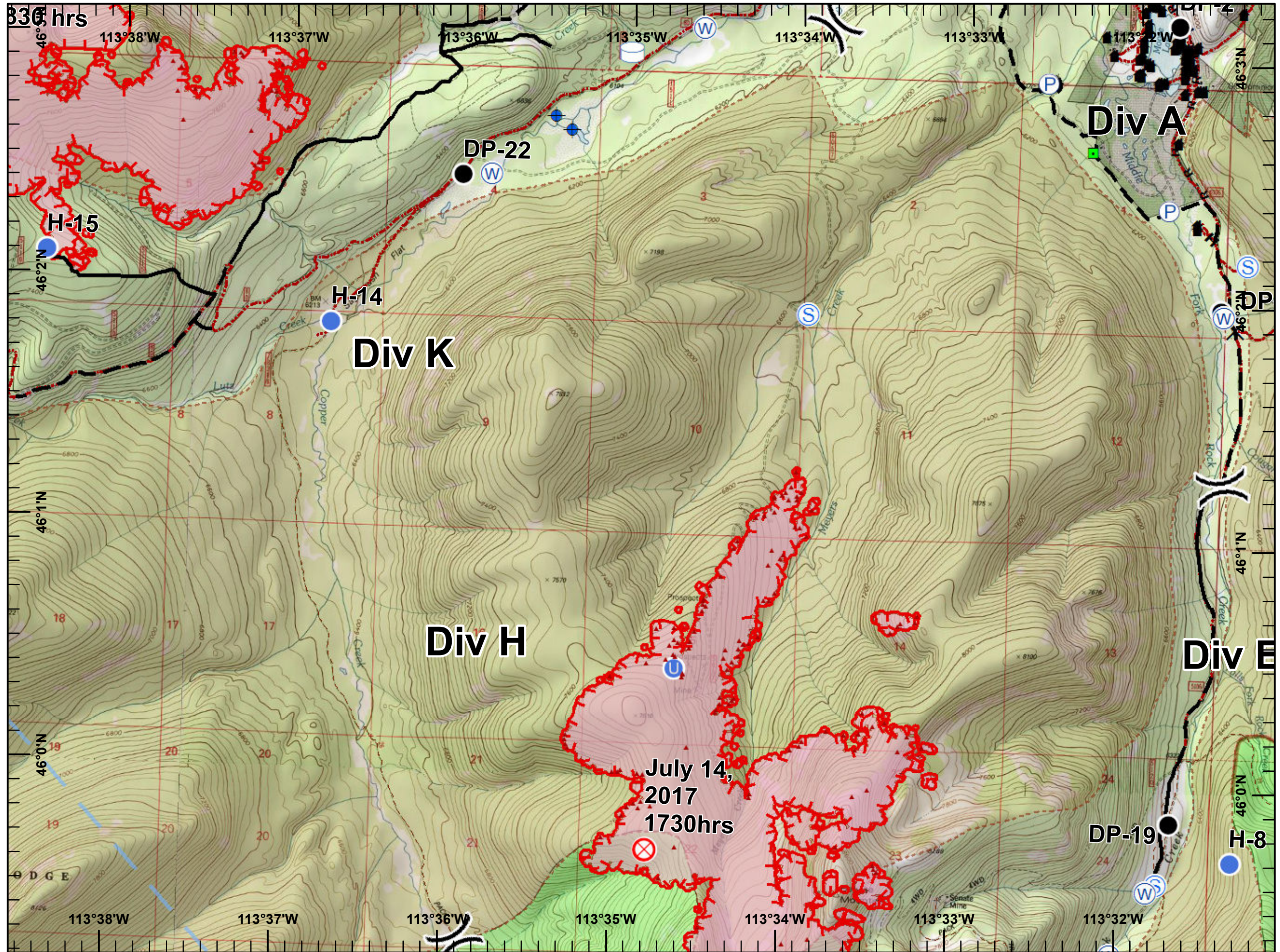
MT-BDF-002213-002217
 July 30, 2017
 Day Shift
 1,077 Acres (Meyers)
 2,241 Acres (Whetstone Ridge)
 as of 07/29/2017
 at 0046 hrs
 UTM NAD83 Zone 12
 Page 4 of 12
 Div H



Legend

- Closure
- Dip Site
- Drop Point
- Fire Origin
- Unimproved Landing Area
- Helispot
- IR Isolated Heat Source
- Landmark
- Pump
- Staging Area
- Water Source
- Water Tank
- Division Break

- Uncontrolled Fire Edge
- Completed Line
- H - Completed Hand Line
- R - Road as Completed Line
- Planned Fire Line
- Wildfire Daily Fire Perimeter
- Temporary Flight Restriction
- Structure
- Roads
- Trails
- Inventoried Roadless Area
- Wilderness



Whetstone Ridge & Meyers Fires

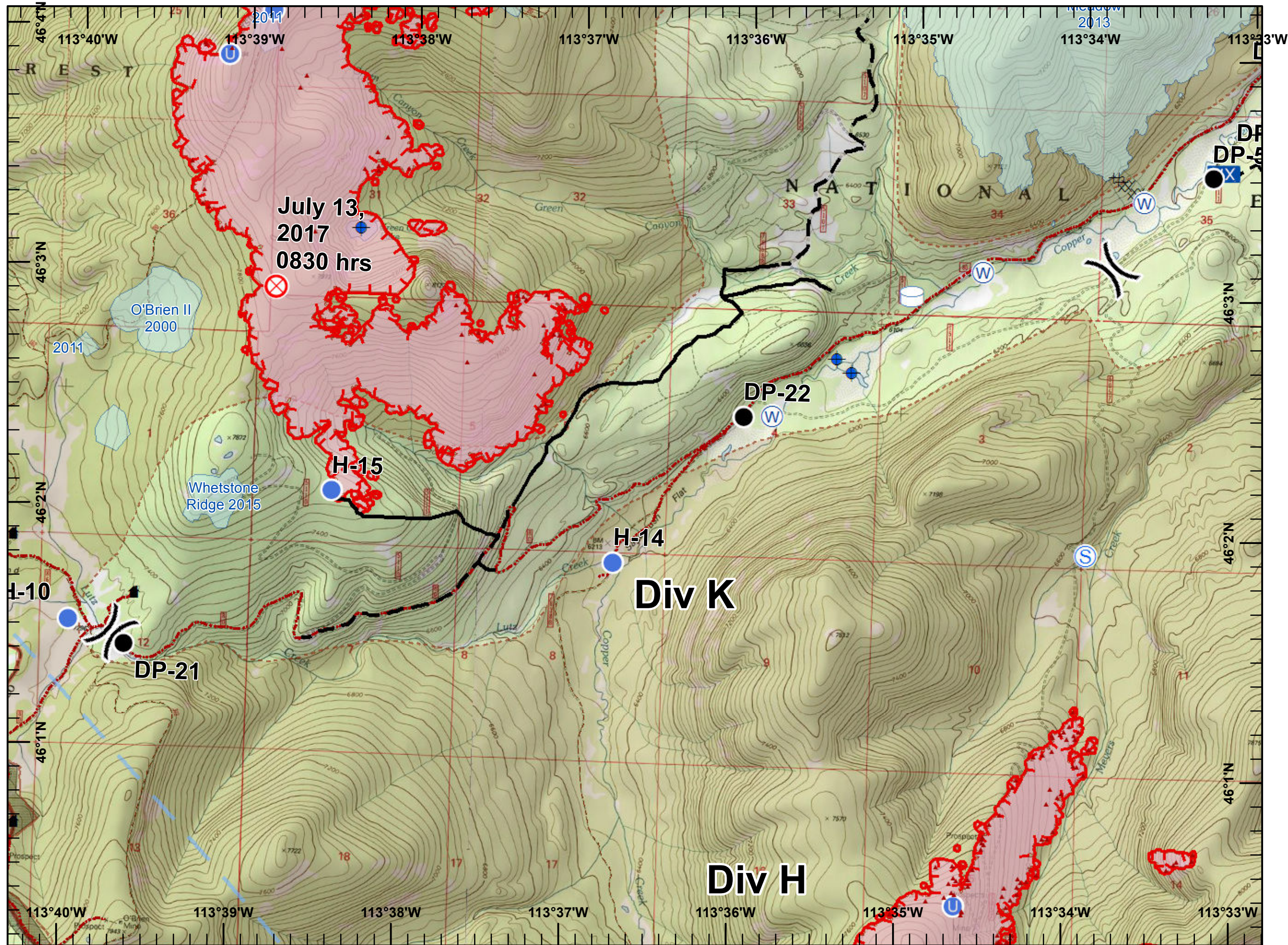
MT-BDF-002213-002217
 July 30, 2017
 Day Shift
 1,077 Acres (Meyers)
 2,241 Acres (Whetstone Ridge)
 as of 07/29/2017
 at 0046 hrs
 UTM NAD83 Zone 12
 Page 5 of 12
 Div K



Legend

- Dip Site
- Drop Point
- Fire Origin
- Unimproved Landing Area
- Helispot
- IR Isolated Heat Source
- Mobile Weather Unit
- Staging Area
- Water Source
- Water Tank
- Division Break

- Uncontrolled Fire Edge
- Completed Line
- Completed Dozer Line
- Planned Fire Line
- Wildfire Daily Fire Perimeter
- Temporary Flight Restriction
- Fire History
- Structure
- Roads
- Trails
- Inventoried Roadless Area



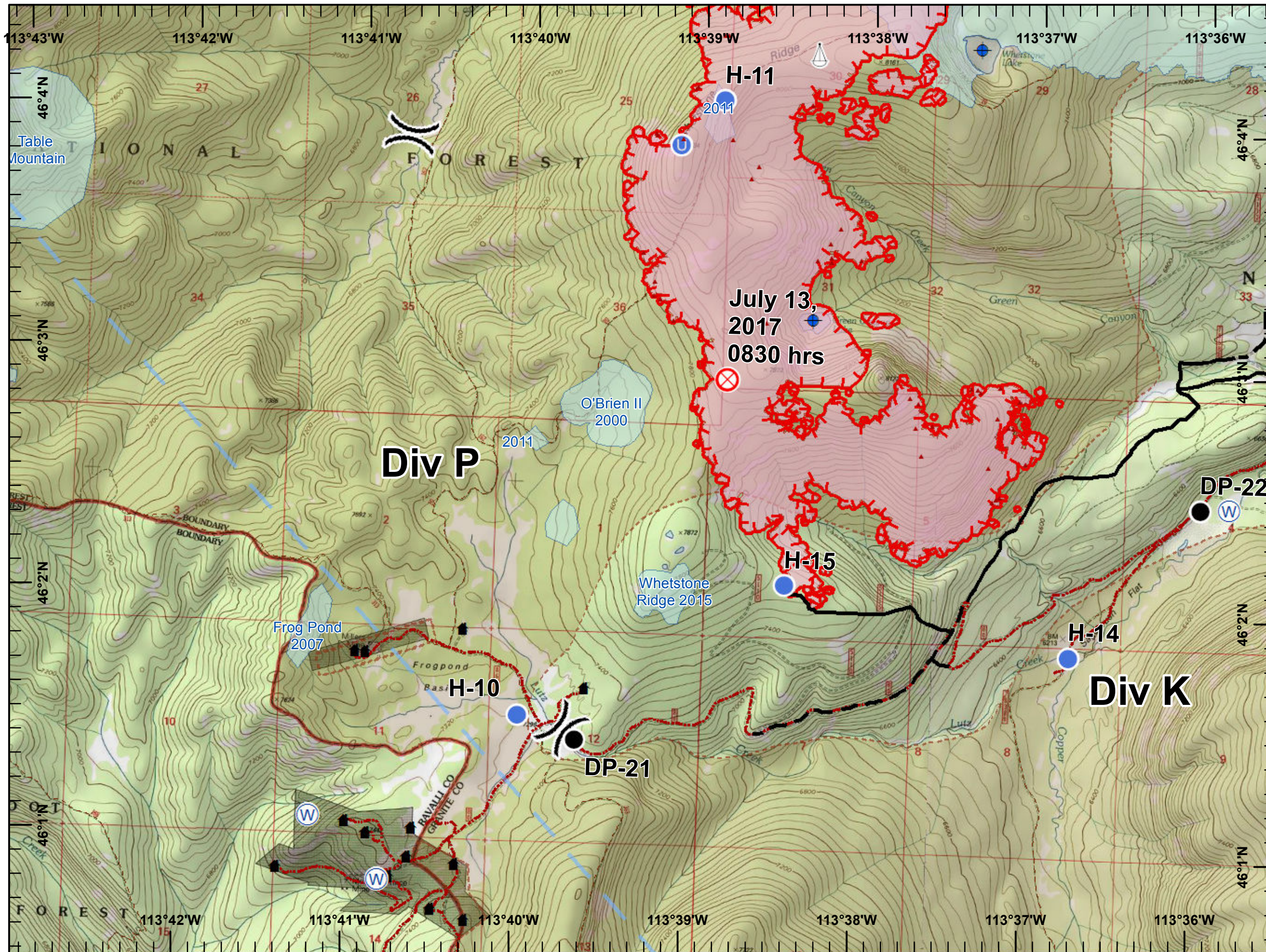
Whetstone Ridge & Meyers Fires

MT-BDF-002213-002217
 July 30, 2017
 Day Shift
 1,077 Acres (Meyers)
 2,241 Acres (Whetstone Ridge)
 as of 07/29/2017
 at 0046 hrs
 UTM NAD83 Zone 12
 Page 6 of 12
 Div P



Legend

- Dip Site
- Drop Point
- Fire Origin
- Unimproved Landing Area
- Helispot
- IR Isolated Heat Source
- Sling Site
- Water Source
- Division Break
- Uncontrolled Fire Edge
- Completed Line
- Planned Fire Line
- Wildfire Daily Fire Perimeter
- Temporary Flight Restriction
- Fire History
- Structure
- Roads
- Trails
- Inventoried Roadless Area



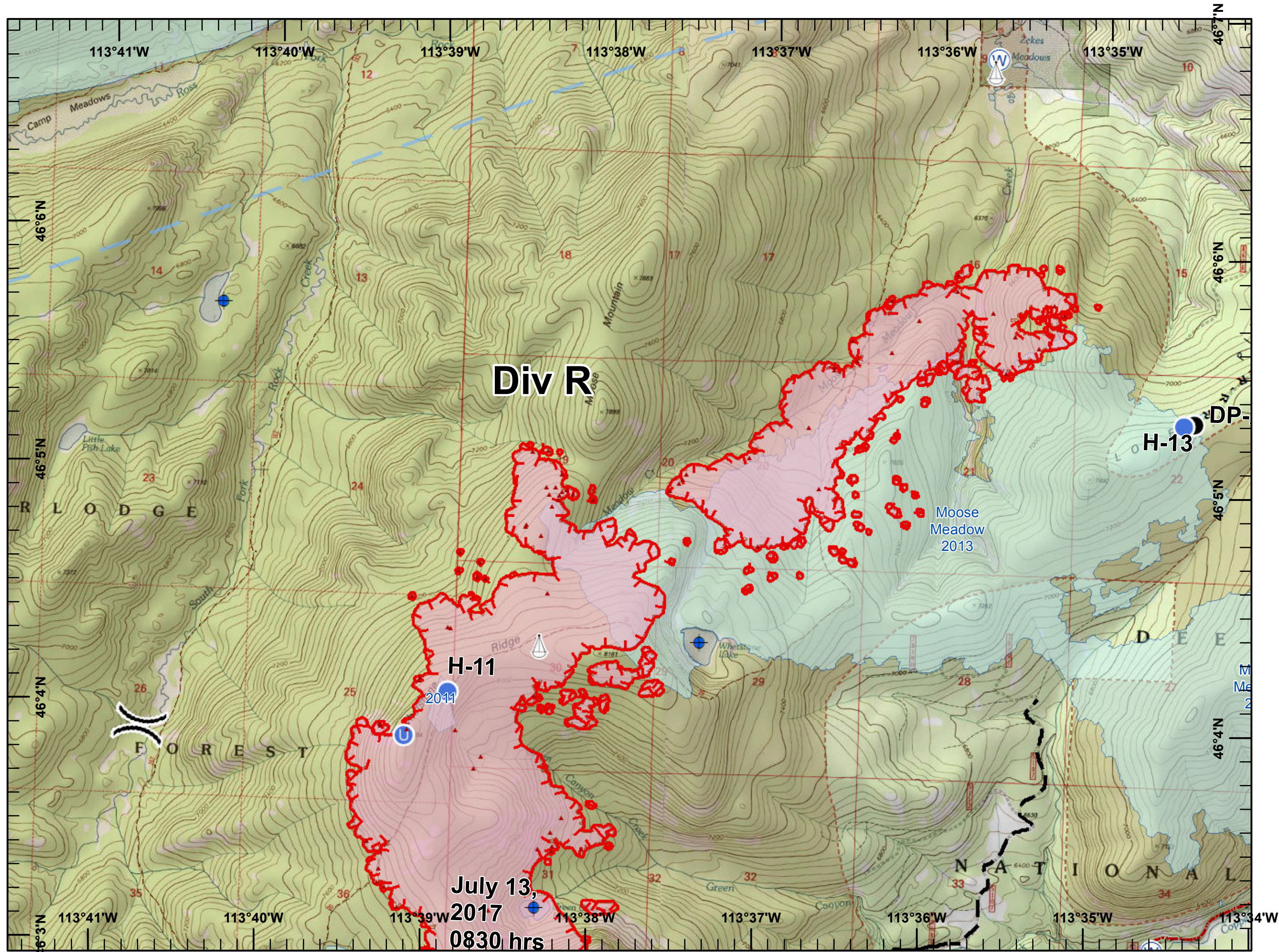
Whetstone Ridge & Meyers Fires

MT-BDF-002213-002217
 July 30, 2017
 Day Shift
 1,077 Acres (Meyers)
 2,241 Acres (Whetstone Ridge)
 as of 07/29/2017
 at 0046 hrs
 UTM NAD83 Zone 12
 Page 7 of 12
 Div R(sw)



Legend

- Dip Site
- Drop Point
- Fire Origin
- Unimproved Landing Area
- Helispot
- IR Isolated Heat Source
- Sling Site
- Water Source
- Division Break
- Uncontrolled Fire Edge
- Completed Line
- R - Road as Completed Line
- Planned Fire Line
- Wildfire Daily Fire Perimeter
- Temporary Flight Restriction
- Fire History
- Roads
- Trails
- Inventoried Roadless Area









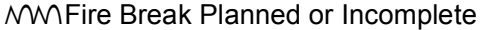
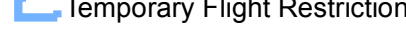







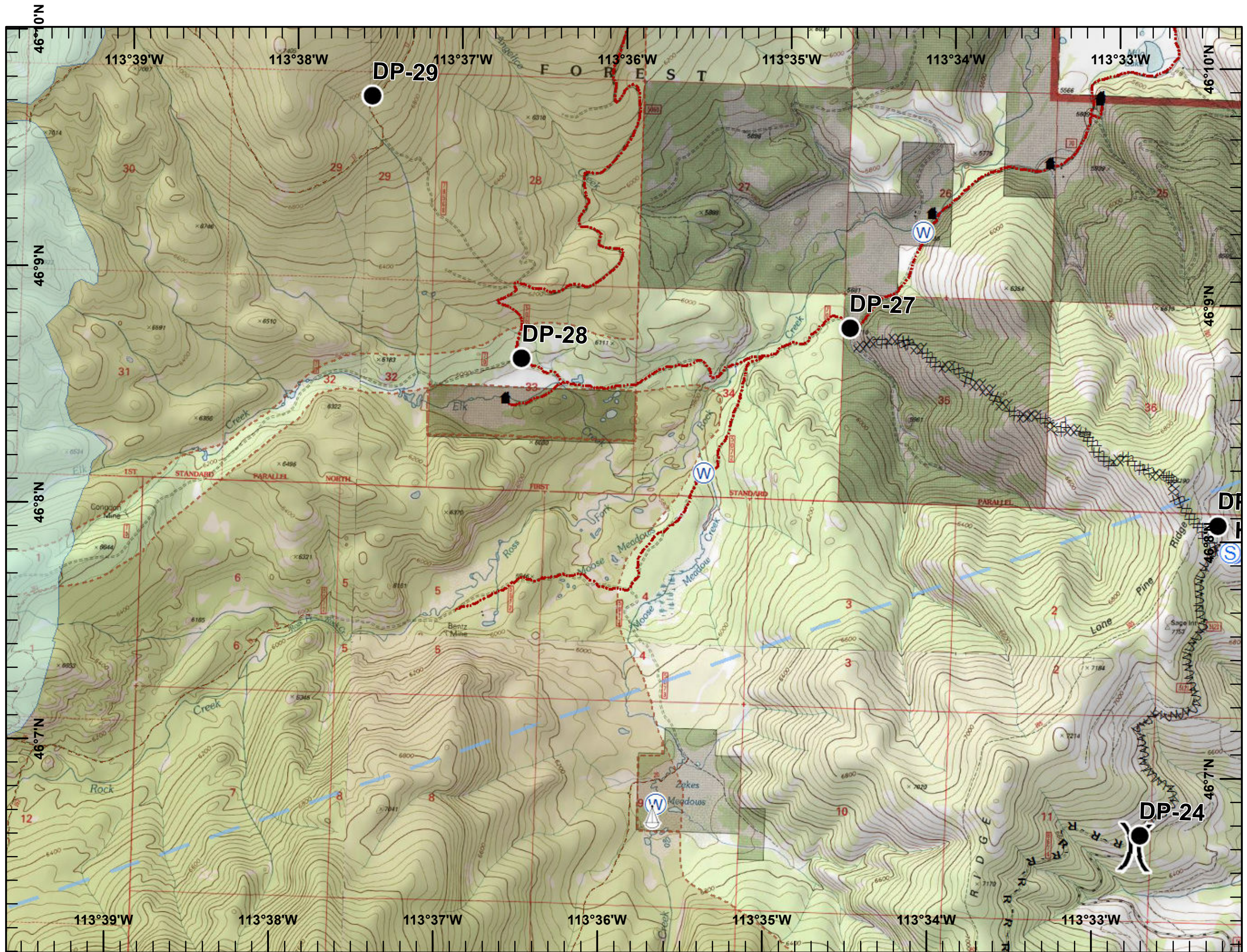
Whetstone Ridge & Meyers Fires

MT-BDF-002213-002217
 July 30, 2017
 Day Shift
 1,077 Acres (Meyers)
 2,241 Acres (Whetstone Ridge)
 as of 07/29/2017
 at 0046 hrs
 UTM NAD83 Zone 12
 Page 8 of 12
 Div R(ne)



Legend

-  Drop Point
-  Helispot
-  Sling Site
-  Staging Area
-  Water Source
-  Division Break
-  Completed Dozer Line
-  R - Road as Completed Line
-  Fire Break Planned or Incomplete
-  Temporary Flight Restriction
-  Fire History
-  Structure
-  Roads
-  Trails
-  Inventoried Roadless Area



Whetstone Ridge & Meyers Fires

MT-BDF-002213-002217

July 30, 2017

Day Shift

1,077 Acres (Meyers)

2,241 Acres (Whetstone Ridge)

as of 07/29/2017

at 0046 hrs

















UTM NAD83 Zone 12

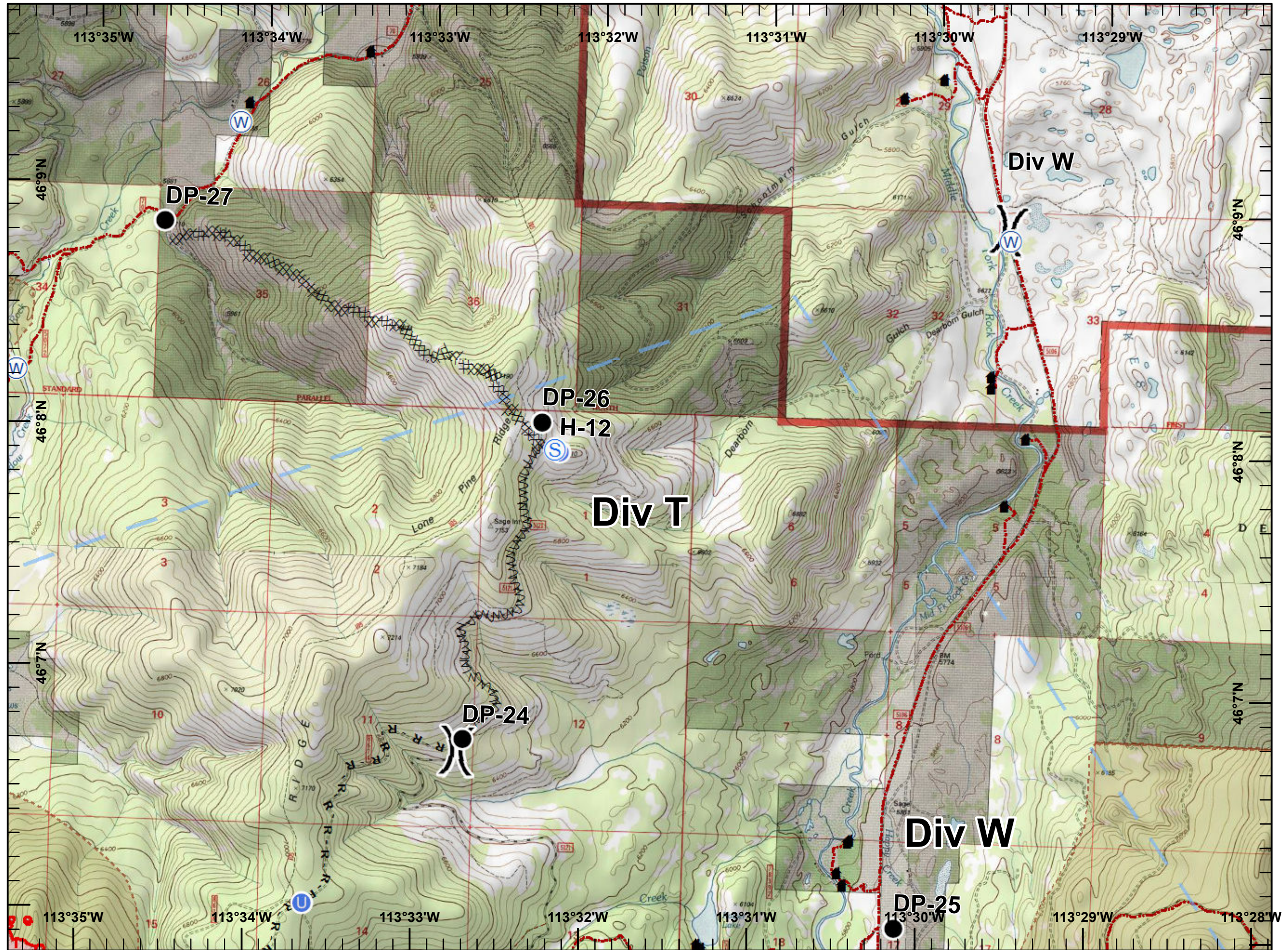
Page 9 of 12

Div T



Legend

-  Drop Point
-  Unimproved Landing Area
-  Helispot
-  Staging Area
-  Water Source
-  Division Break
-  Uncontrolled Fire Edge
-  Completed Dozer Line
-  R - Road as Completed Line
-  Fire Break Planned or Incomplete
-  Wildfire Daily Fire Perimeter
-  Temporary Flight Restriction
-  Structure
-  Roads
-  Trails
-  Inventoried Roadless Area



Whetstone Ridge & Meyers Fires

MT-BDF-002213-002217

July 30, 2017

Day Shift

1,077 Acres (Meyers)

2,241 Acres (Whetstone Ridge)

as of 07/29/2017

at 0046 hrs

UTM NAD83 Zone 12

Page 10 of 12

Div W(n)



Legend

● Drop Point

⊙ Water Source

⌋ Division Break

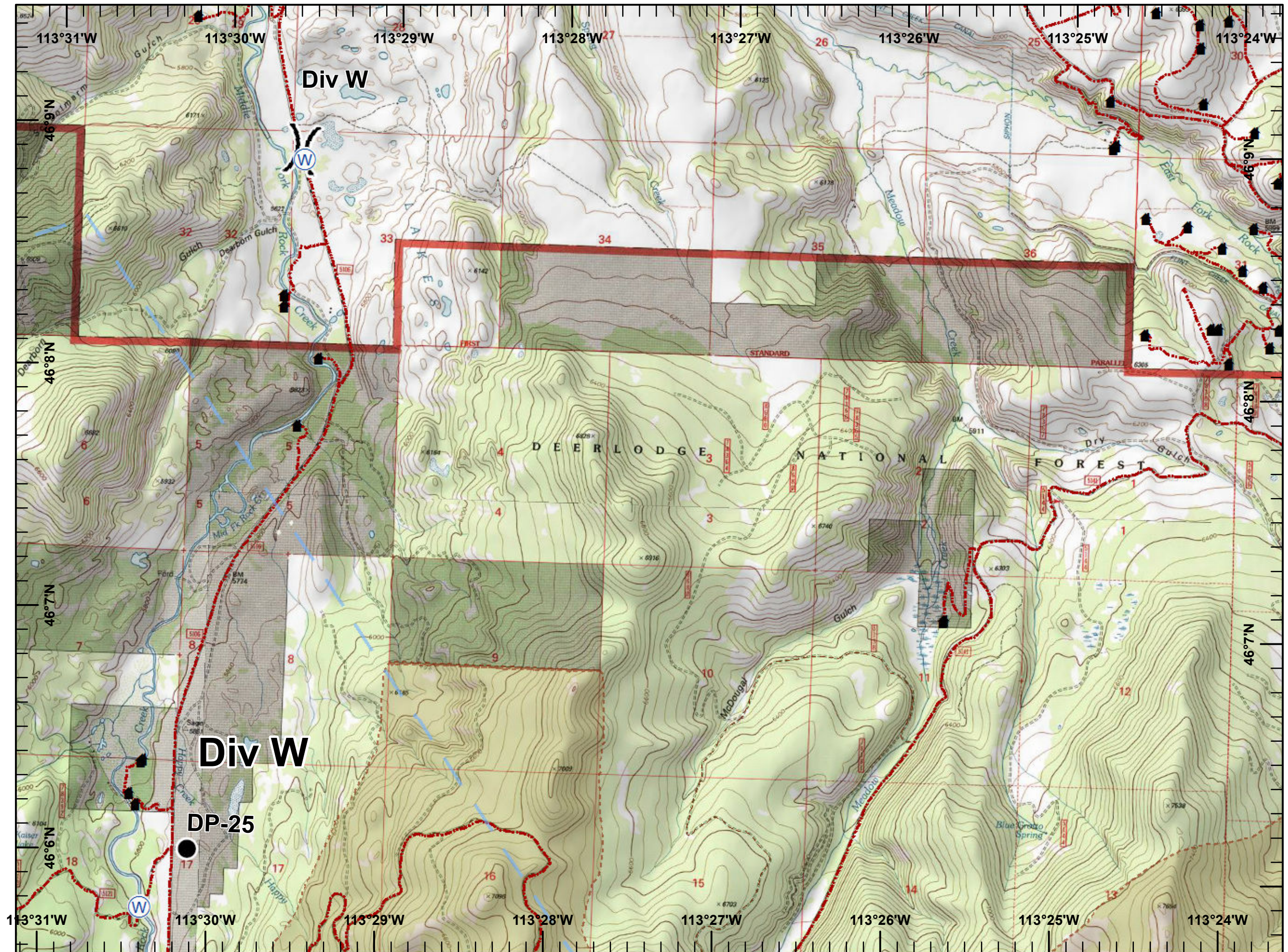
Temporary Flight Restriction

Structure

Roads

Trails

Inventoried Roadless Area










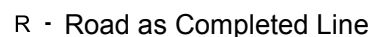
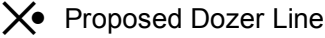









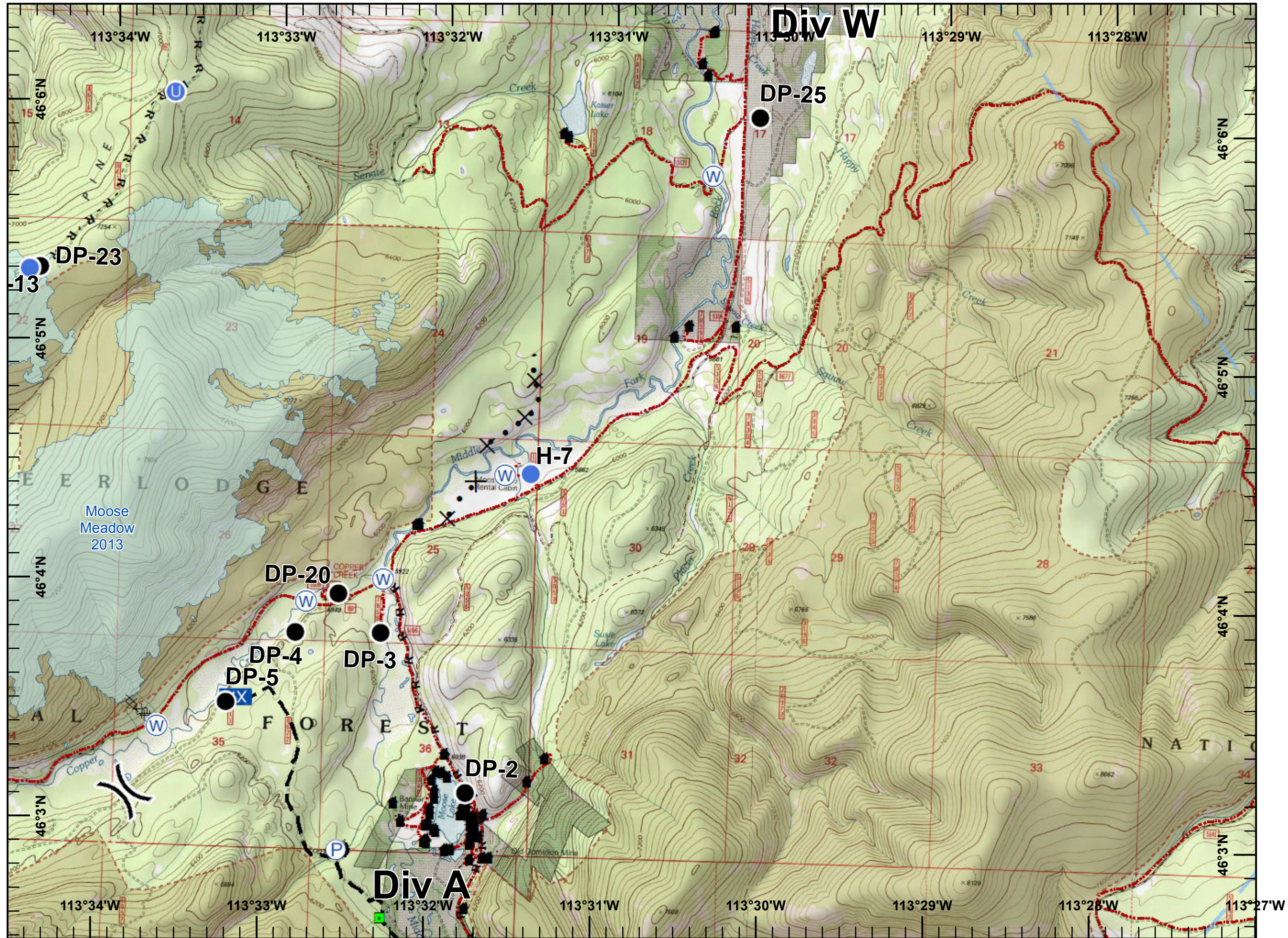
Whetstone Ridge & Meyers Fires

MT-BDF-002213-002217
 July 30, 2017
 Day Shift
 1,077 Acres (Meyers)
 2,241 Acres (Whetstone Ridge)
 as of 07/29/2017
 at 0046 hrs
 UTM NAD83 Zone 12
 Page 11 of 12
 Div W(s)



Legend

-  Drop Point
-  Unimproved Landing Area
-  Helispot
-  Landmark
-  Mobile Weather Unit
-  Pump
-  Water Source
-  Division Break
-  Completed Dozer Line
-  Road as Completed Line
-  Proposed Dozer Line
-  Planned Fire Line
-  Temporary Flight Restriction
-  Fire History
-  Structure
-  Roads
-  Trails
-  Inventoried Roadless Area



Whetstone Ridge & Meyers Fires

MT-BDF-002213-002217

July 30, 2017

Day Shift

1,077 Acres (Meyers)

2,241 Acres (Whetstone Ridge)

as of 07/29/2017

at 0046 hrs





UTM NAD83 Zone 12

Page 12 of 12

ICP




Legend

-  Helispot
-  Incident Command Post
-  Water Source
-  Division Break

 Completed Dozer Line

 Temporary Flight Restriction

 Structure

 Roads

