

Whetstone Ridge & Meyers Fires

MT-BDF-002213-002217

July 31, 2017

Day Shift

1,098 Acres (Meyers)

2,340 Acres (Whetstone Ridge)

as of 07/29/2017

at 2329 hrs

UTM NAD83 Zone 12

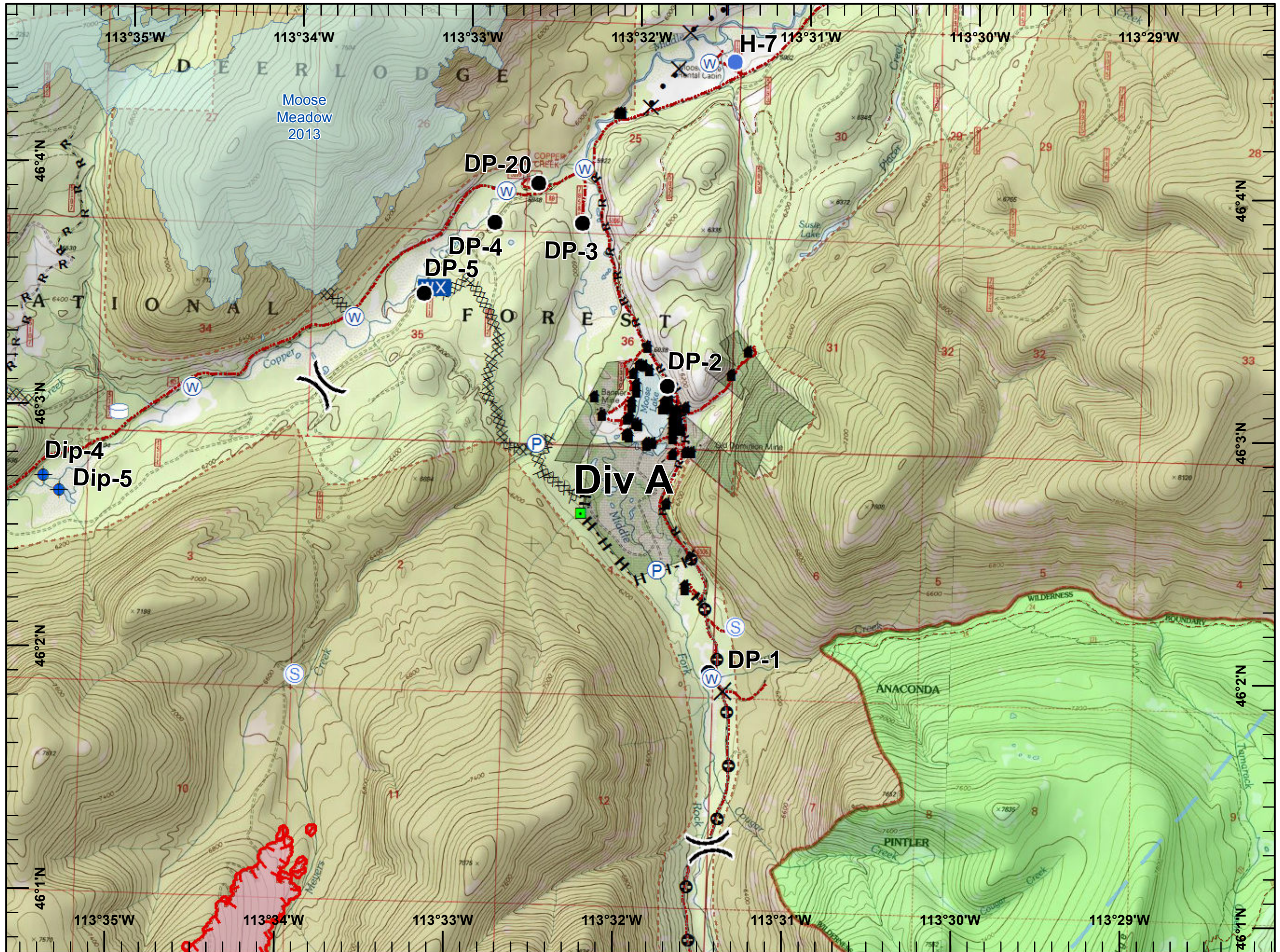
Page 1 of 12

Div A

Legend



- Closure
- Dip Site
- Drop Point
- Helispot
- Landmark
- Mobile Weather Unit
- Pump
- Staging Area
- Water Source
- Water Tank
- Division Break
- Uncontrolled Fire Edge
- Completed Dozer Line
- Completed Hand Line
- Road as Completed Line
- Proposed Dozer Line
- Other
- Wildfire Daily Fire Perimeter
- Temporary Flight Restriction
- Fire History
- Structure
- Roads
- Trails
- Inventoried Roadless Area
- Wilderness



Whetstone Ridge & Meyers Fires

MT-BDF-002213-002217

July 31, 2017

Day Shift

1,098 Acres (Meyers)

2,340 Acres (Whetstone Ridge)

as of 07/29/2017

at 2329 hrs

UTM NAD83 Zone 12

Page 2 of 12

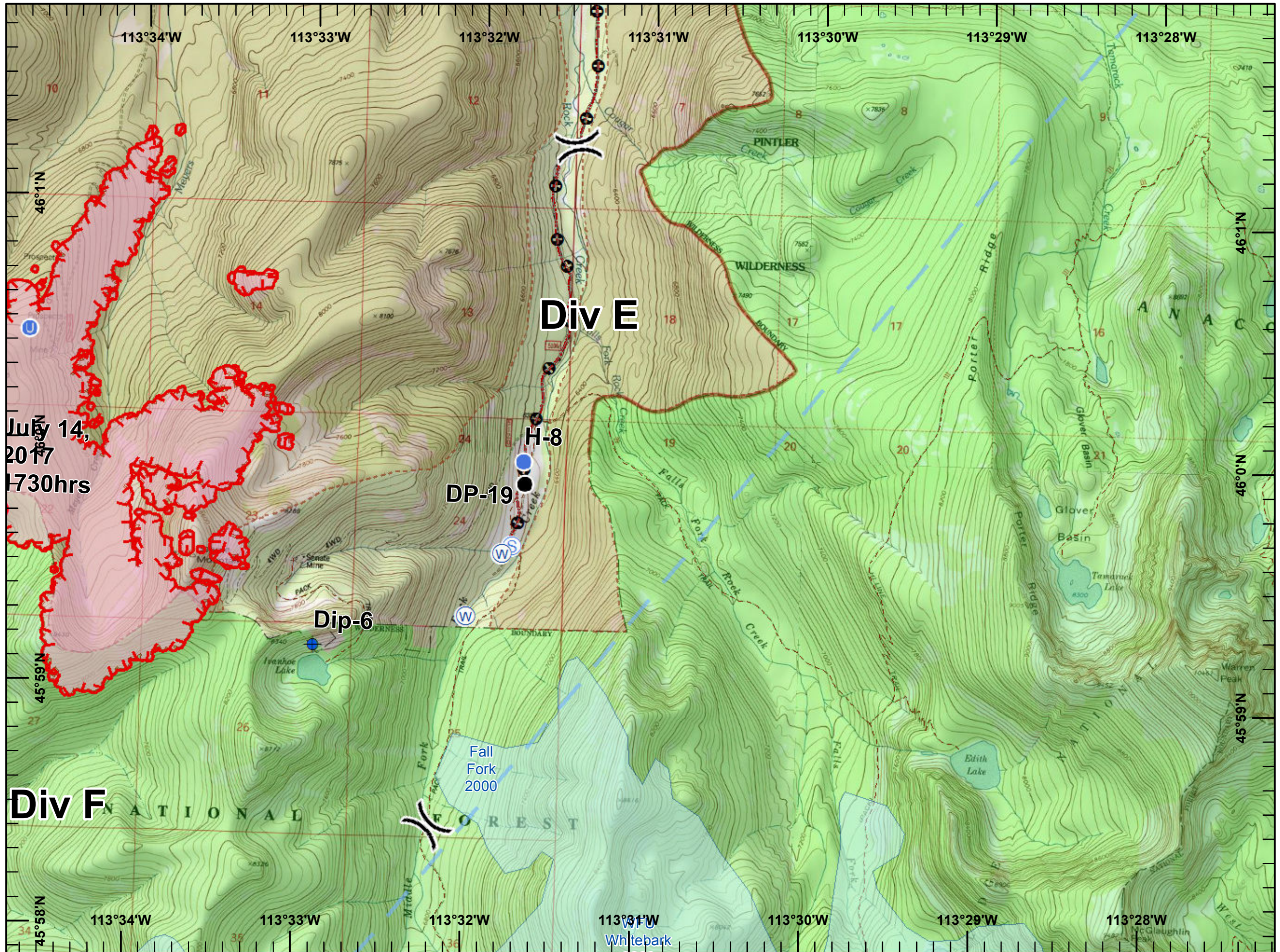
Div E



Legend

- Dip Site
- Drop Point
- Fire Origin
- Unimproved Landing Area
- Helispot
- Staging Area
- Water Source
- Division Break

- Uncontrolled Fire Edge
- Other
- Wildfire Daily Fire Perimeter
- Temporary Flight Restriction
- Fire History
- Structure
- Roads
- Trails
- Inventoried Roadless Area
- Wilderness



**Whetstone Ridge
& Meyers Fires**

MT-BDF-002213-002217

July 31, 2017

Day Shift

1,098 Acres (Meyers)

2,340 Acres (Whetstone Ridge)

as of 07/29/2017

at 2329 hrs



UTM NAD83 Zone 12

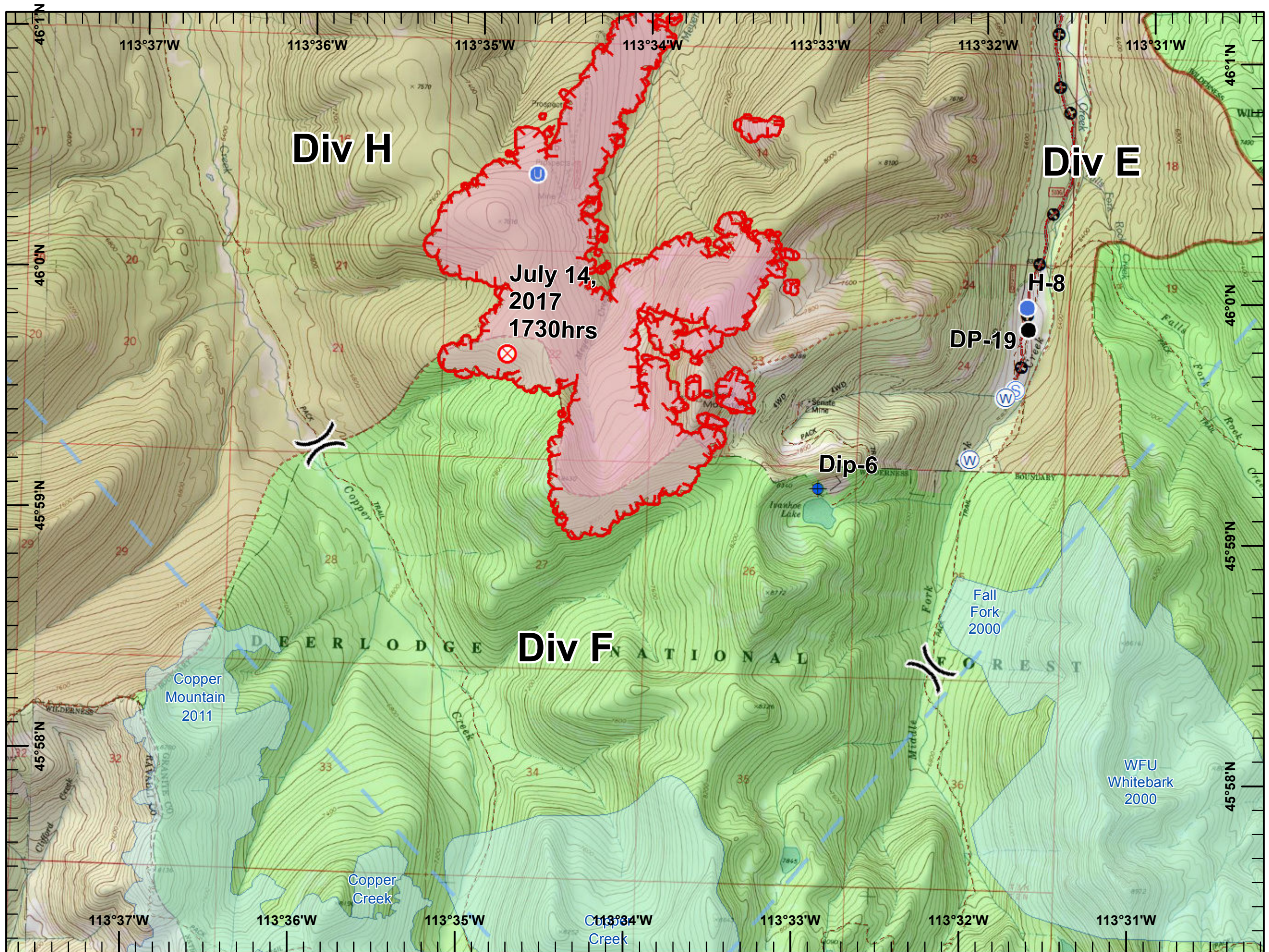
Page 3 of 12

Div F



Legend

-  Dip Site
-  Drop Point
-  Fire Origin
-  Unimproved Landing Area
-  Helispot
-  Staging Area
-  Water Source
-  Division Break
-  Uncontrolled Fire Edge
-  Other
-  Wildfire Daily Fire Perimeter
-  Temporary Flight Restriction
-  Fire History
-  Structure
-  Roads
-  Trails
-  Inventoried Roadless Area
-  Wilderness



**Whetstone Ridge
& Meyers Fires**

MT-BDF-002213-002217

July 31, 2017

Day Shift

1,098 Acres (Meyers)

2,340 Acres (Whetstone Ridge)

as of 07/29/2017

at 2329 hrs

UTM NAD83 Zone 12

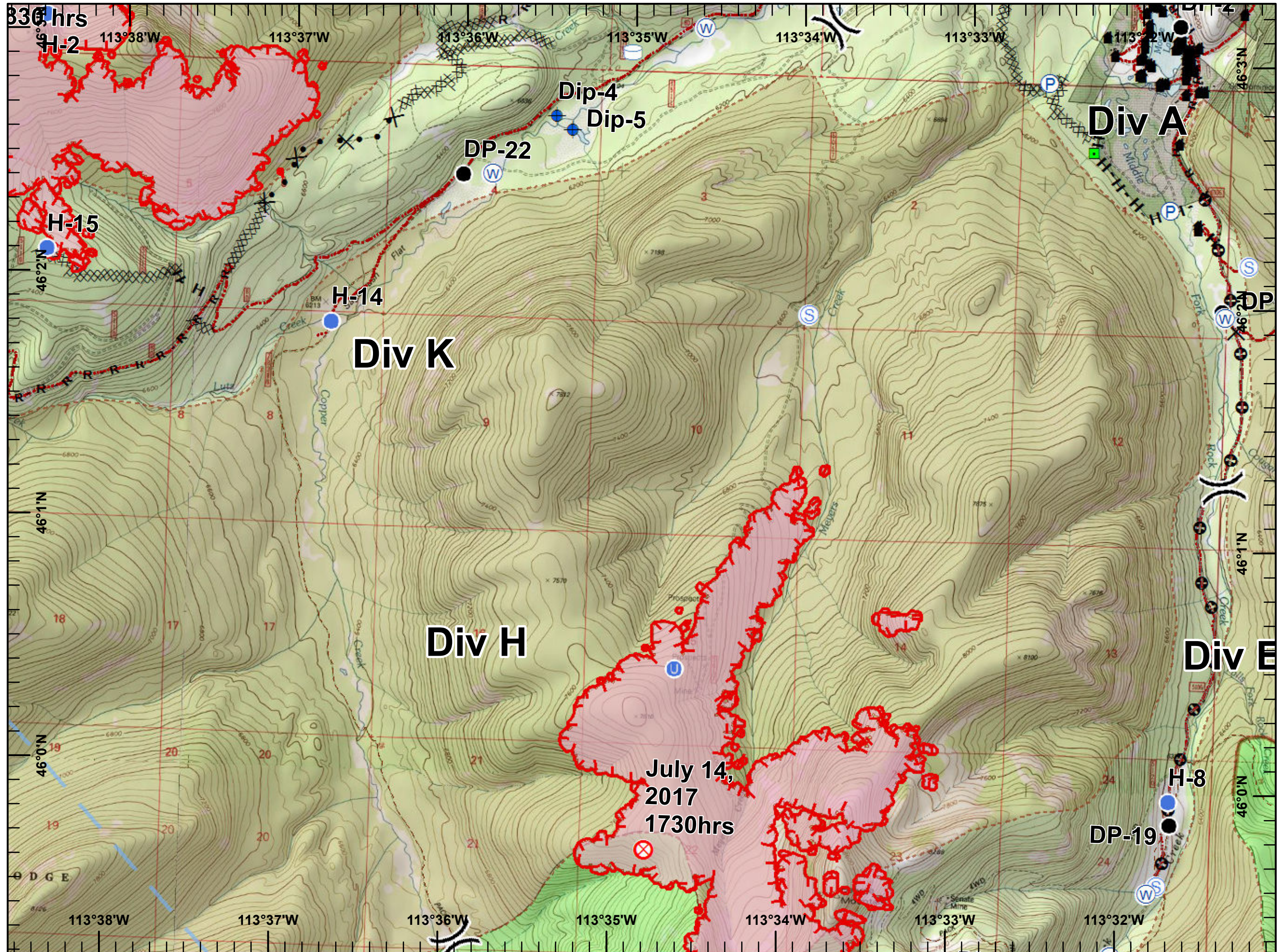
Page 4 of 12

Div H

Legend



- Closure
- Dip Site
- Drop Point
- Fire Origin
- Unimproved Landing Area
- Helispot
- Landmark
- Pump
- Staging Area
- Water Source
- Water Tank
- Division Break
- Uncontrolled Fire Edge
- Completed Dozer Line
- Completed Hand Line
- Road as Completed Line
- Proposed Dozer Line
- Other
- Wildfire Daily Fire Perimeter
- Temporary Flight Restriction
- Structure
- Roads
- Trails
- Inventoried Roadless Area
- Wilderness



Whetstone Ridge & Meyers Fires

MT-BDF-002213-002217

July 31, 2017

Day Shift

1,098 Acres (Meyers)

2,340 Acres (Whetstone Ridge)

as of 07/29/2017

at 2329 hrs

UTM NAD83 Zone 12

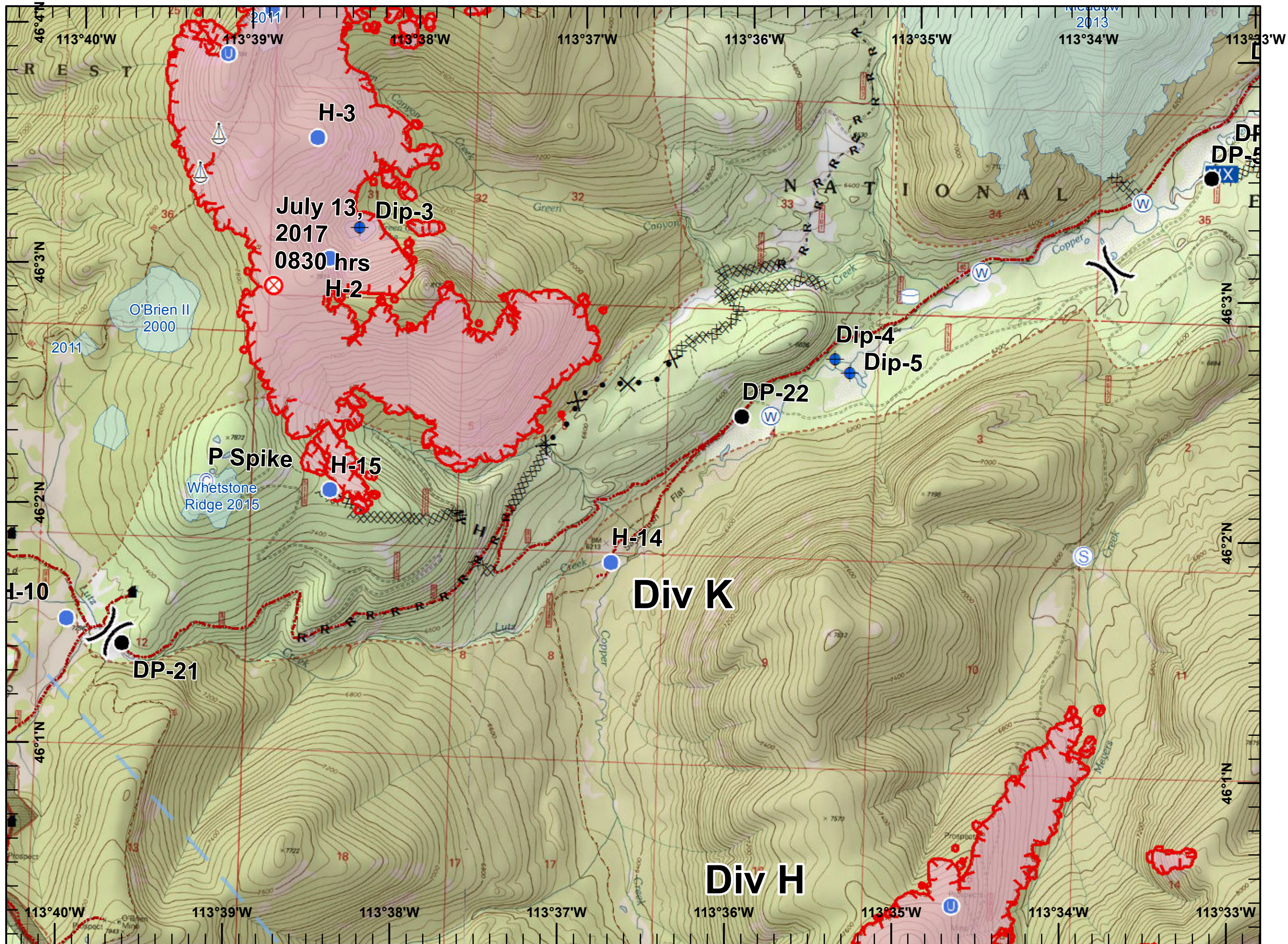
Page 5 of 12

Div K

Legend



- ⊙ Camp
- ⊕ Dip Site
- Drop Point
- ⊗ Fire Origin
- ⊙ Unimproved Landing Area
- Helispot
- WX Mobile Weather Unit
- ⚓ Sling Site
- ⊙ Staging Area
- ⊙ Water Source
- ⊙ Water Tank
-) Division Break
- Uncontrolled Fire Edge
- XXXX Completed Dozer Line
- H - Completed Hand Line
- R - Road as Completed Line
- ✂ Proposed Dozer Line
- ▭ Wildfire Daily Fire Perimeter
- ▭ Temporary Flight Restriction
- ▭ Fire History
- ▭ Structure
- ▭ Roads
- ▭ Trails
- ▭ Inventoried Roadless Area



Whetstone Ridge & Meyers Fires

MT-BDF-002213-002217

July 31, 2017

Day Shift

1,098 Acres (Meyers)

2,340 Acres (Whetstone Ridge)

as of 07/29/2017

at 2329 hrs

UTM NAD83 Zone 12

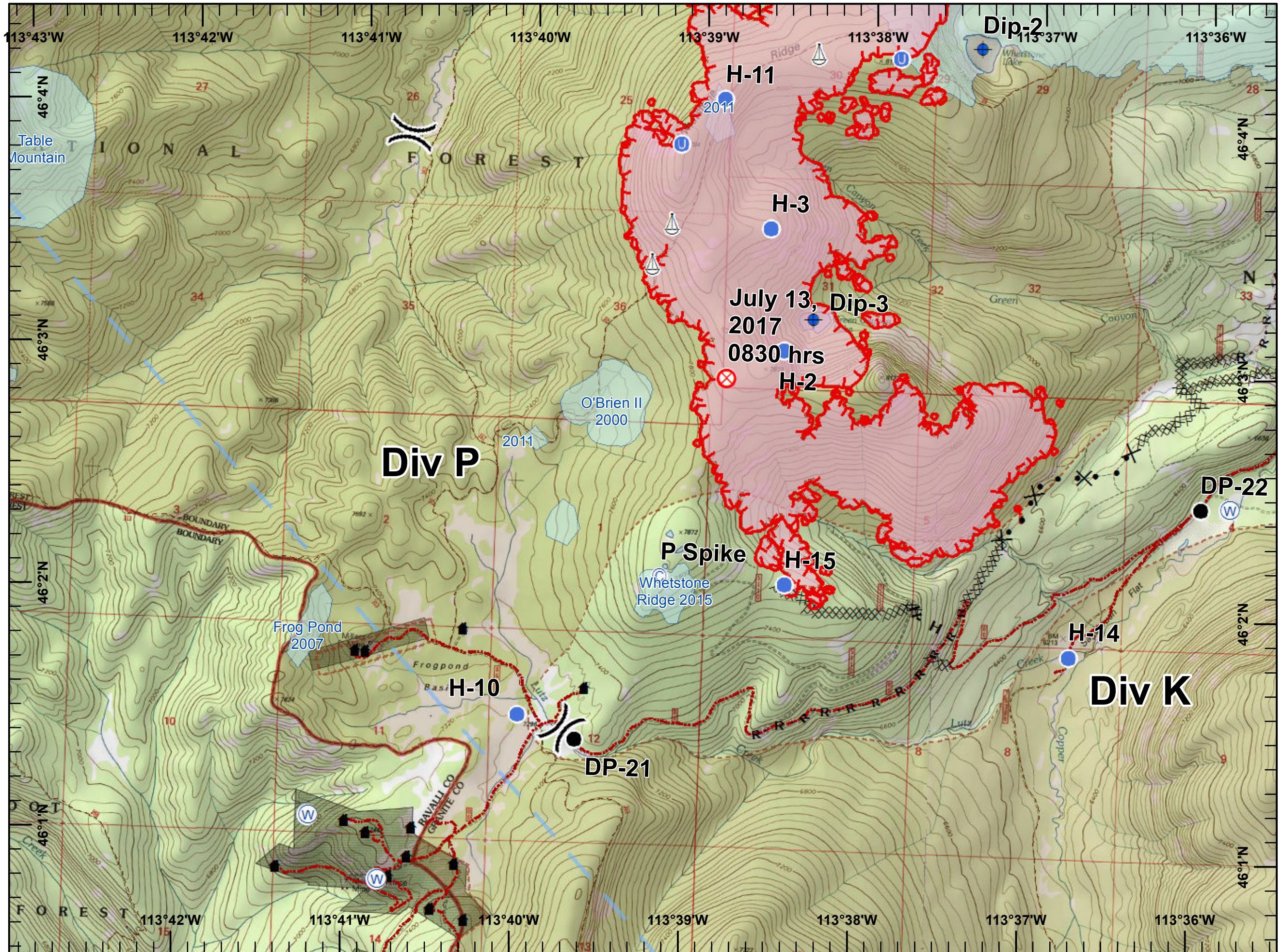
Page 6 of 12

Div P



Legend

- Camp
- Dip Site
- Drop Point
- Fire Origin
- Unimproved Landing Area
- Helispot
- Sling Site
- Water Source
- Division Break
- Uncontrolled Fire Edge
- Completed Dozer Line
- H - Completed Hand Line
- R - Road as Completed Line
- Proposed Dozer Line
- Wildfire Daily Fire Perimeter
- Temporary Flight Restriction
- Fire History
- Structure
- Roads
- Trails
- Inventoried Roadless Area



**Whetstone Ridge
& Meyers Fires**

MT-BDF-002213-002217

July 31, 2017

Day Shift

1,098 Acres (Meyers)

2,340 Acres (Whetstone Ridge)

as of 07/29/2017

at 2329 hrs

UTM NAD83 Zone 12

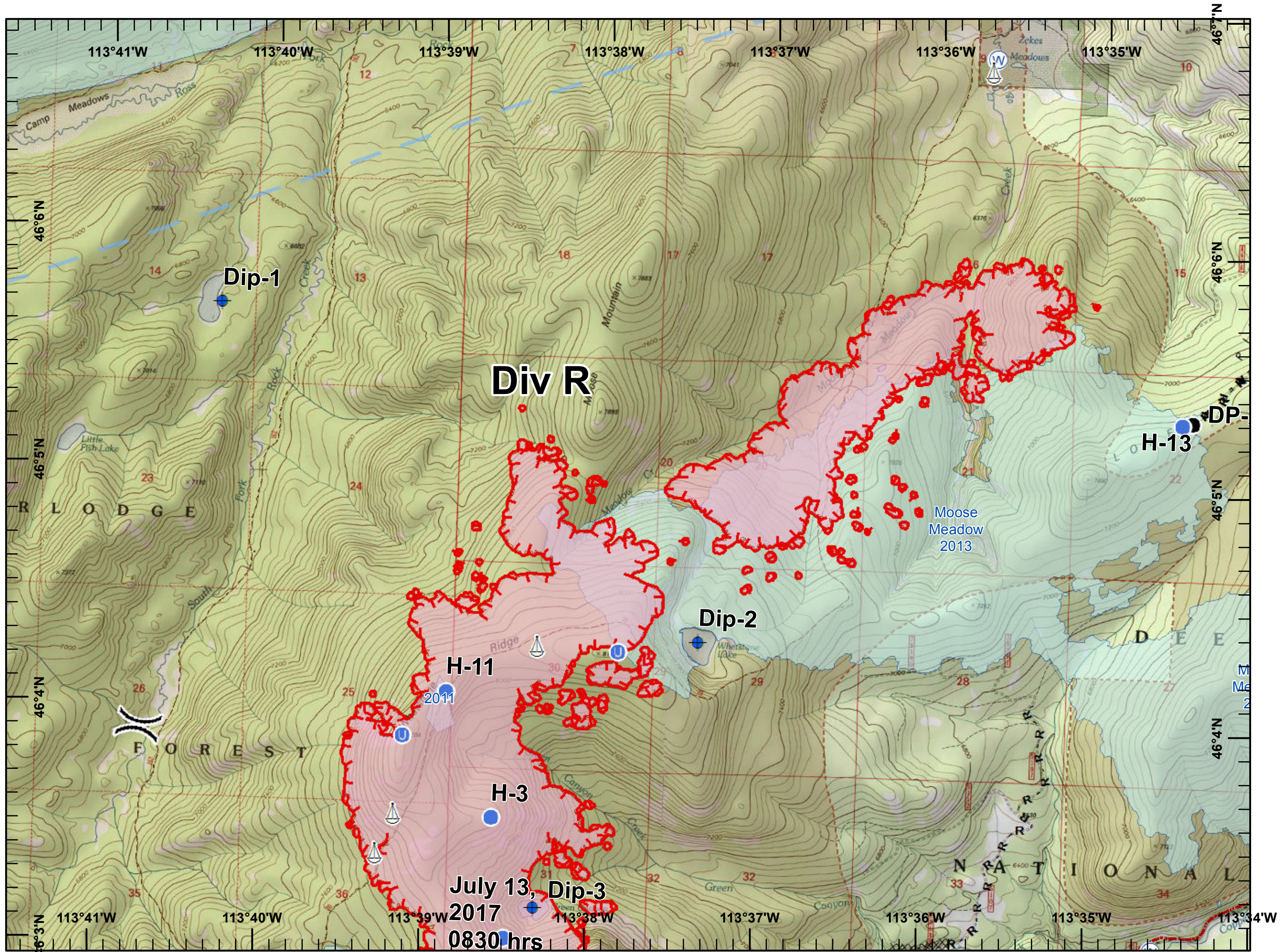
Page 7 of 12

Div R(sw)



Legend

- Dip Site
- Drop Point
- Unimproved Landing Area
- Helispot
- Sling Site
- Water Source
- Division Break
- Uncontrolled Fire Edge
- Completed Dozer Line
- R - Road as Completed Line
- Wildfire Daily Fire Perimeter
- Temporary Flight Restriction
- Fire History
- Roads
- Trails
- Inventoried Roadless Area



Whetstone Ridge & Meyers Fires

MT-BDF-002213-002217

July 31, 2017

Day Shift

1,098 Acres (Meyers)

2,340 Acres (Whetstone Ridge)

as of 07/29/2017

at 2329 hrs

UTM NAD83 Zone 12

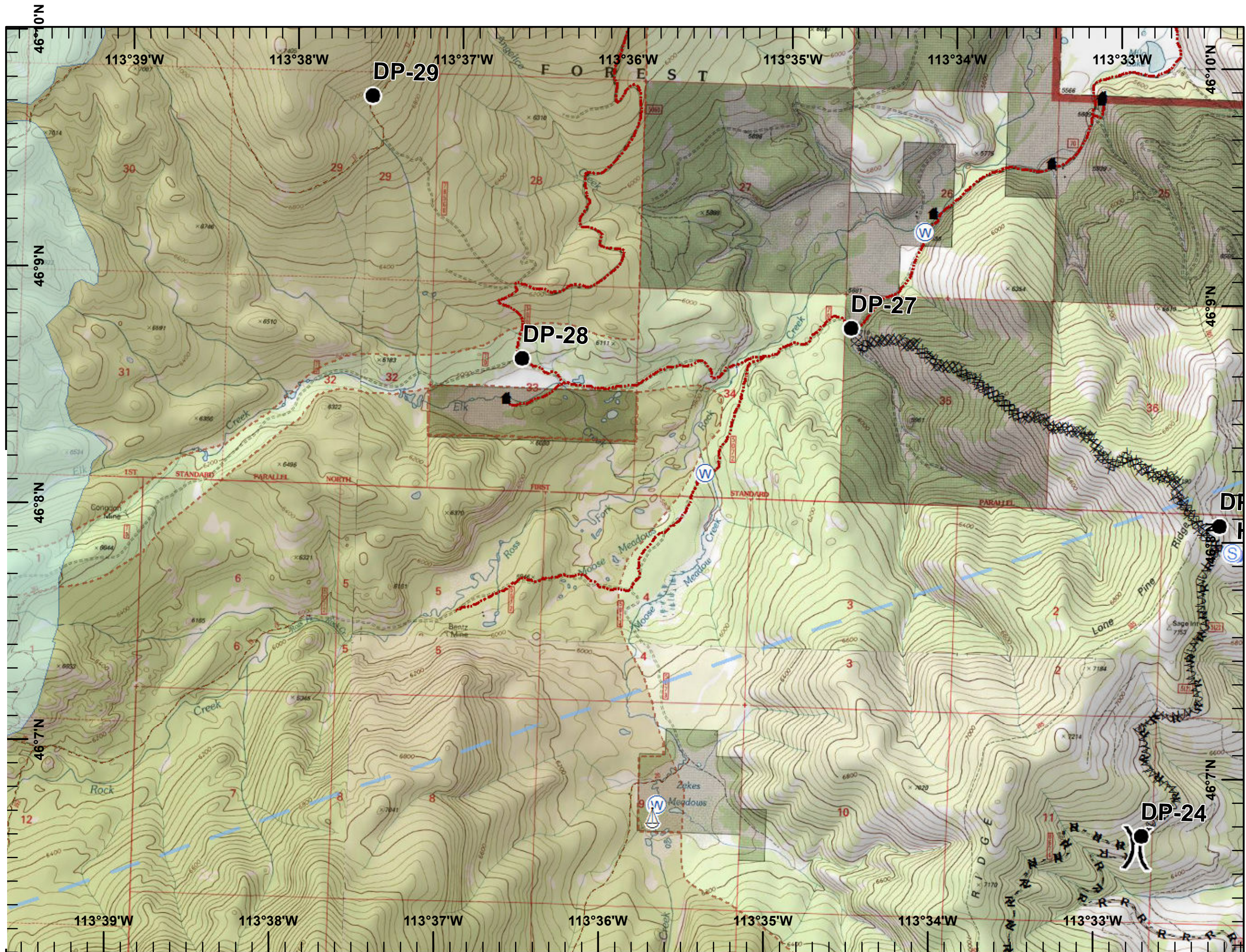
Page 8 of 12

Div R(ne)



Legend

- Drop Point
- Helispot
- Sling Site
- Staging Area
- Water Source
- Division Break
- Completed Dozer Line
- Road as Completed Line
- Fire Break Planned or Incomplete
- Temporary Flight Restriction
- Fire History
- Structure
- Roads
- Trails
- Inventoried Roadless Area



Whetstone Ridge & Meyers Fires

MT-BDF-002213-002217

July 31, 2017

Day Shift

1,098 Acres (Meyers)

2,340 Acres (Whetstone Ridge)

as of 07/29/2017

at 2329 hrs

















UTM NAD83 Zone 12

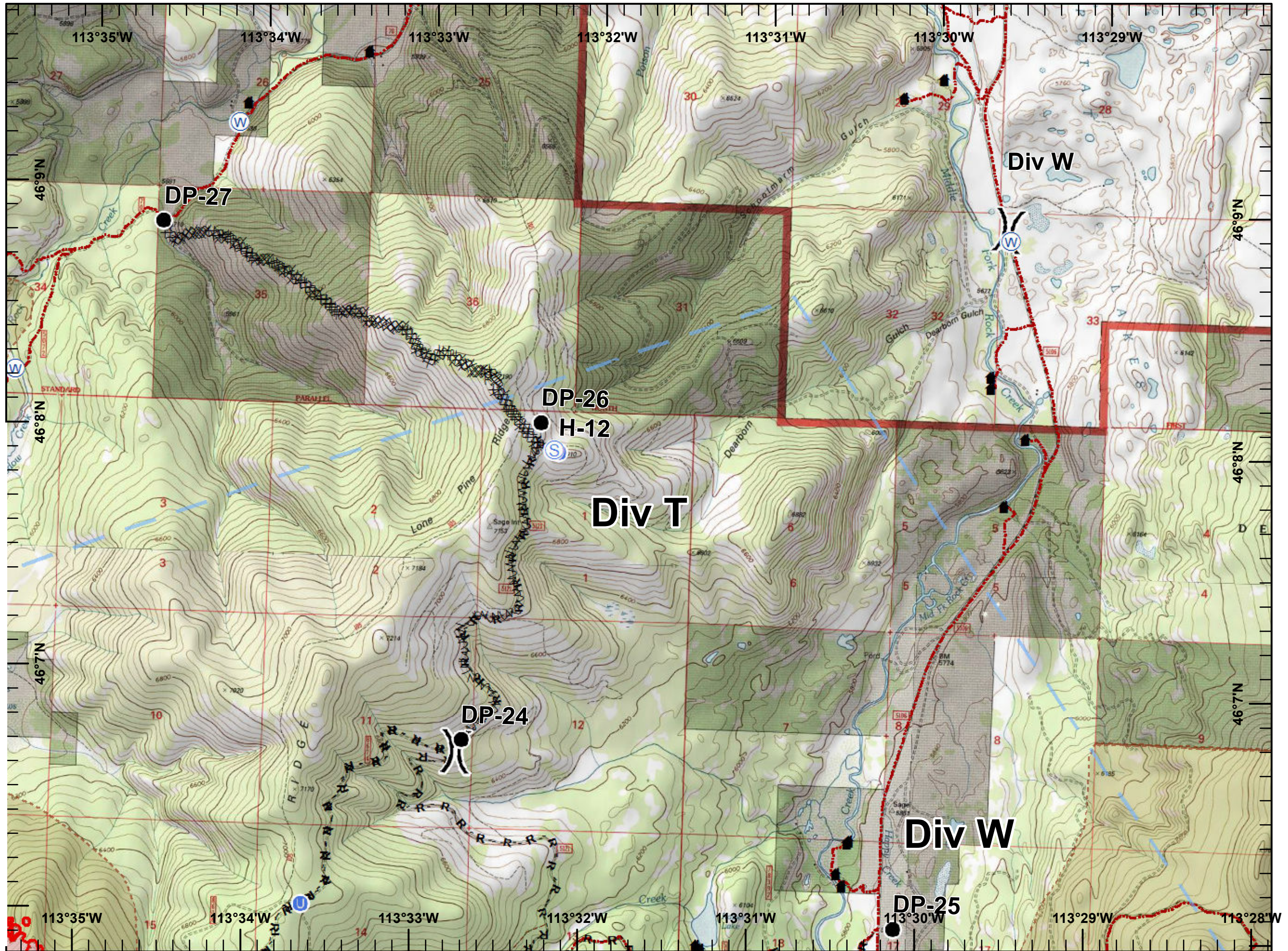
Page 9 of 12

Div T



Legend

-  Drop Point
-  Unimproved Landing Area
-  Helispot
-  Staging Area
-  Water Source
-  Division Break
-  Uncontrolled Fire Edge
-  Completed Dozer Line
-  Road as Completed Line
-  Fire Break Planned or Incomplete
-  Wildfire Daily Fire Perimeter
-  Temporary Flight Restriction
-  Structure
-  Roads
-  Trails
-  Inventoried Roadless Area



Whetstone Ridge & Meyers Fires

MT-BDF-002213-002217

July 31, 2017

Day Shift

1,098 Acres (Meyers)

2,340 Acres (Whetstone Ridge)

as of 07/29/2017

at 2329 hrs

UTM NAD83 Zone 12

Page 10 of 12

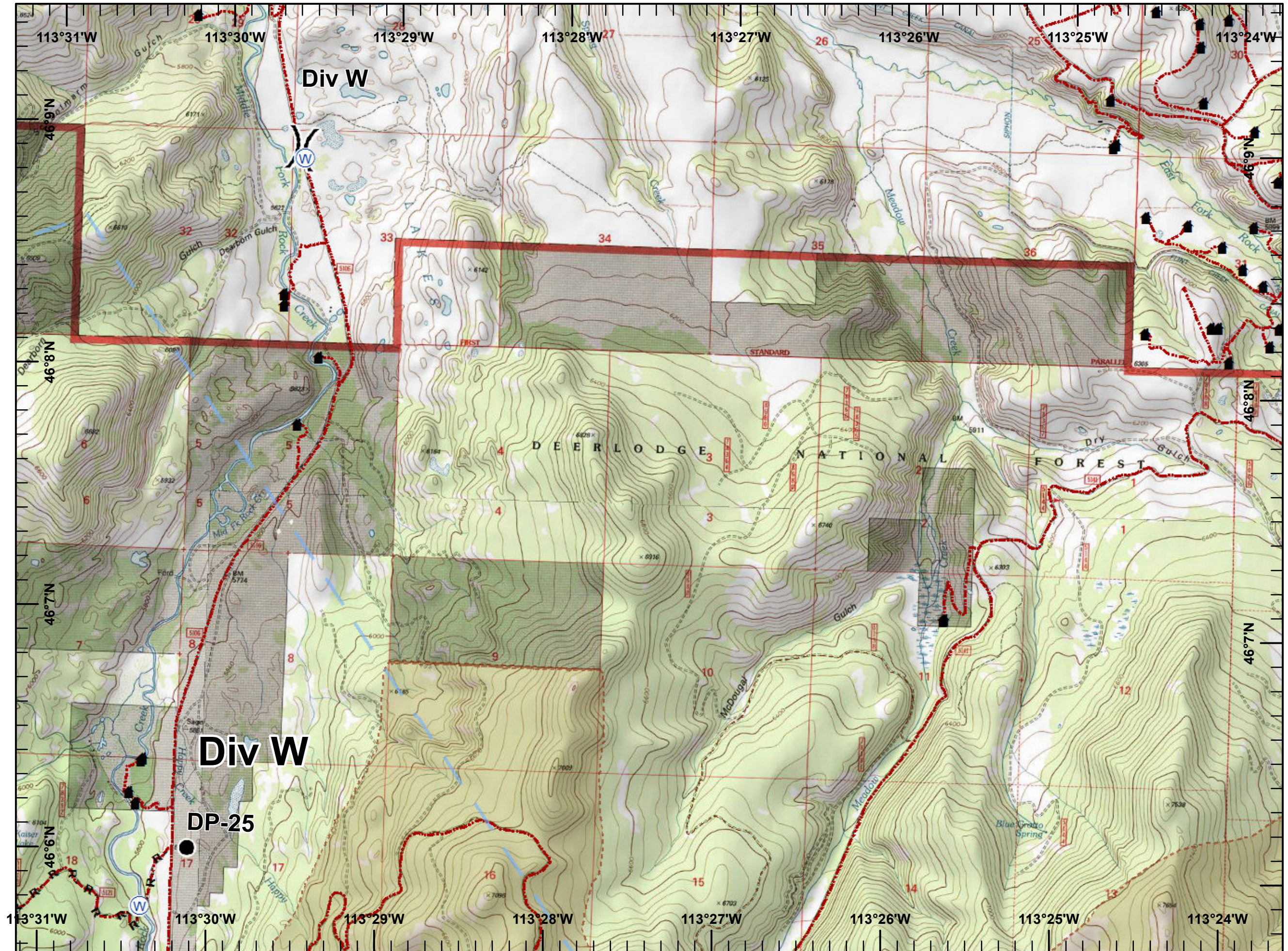
Div W(n)



Legend

- Drop Point
- Ⓜ Water Source
-) Division Break

- R - Road as Completed Line
- ▬ Temporary Flight Restriction
- ▬ Structure
- ▬ Roads
- ▬ Trails
- ▬ Inventoried Roadless Area



Whetstone Ridge & Meyers Fires

MT-BDF-002213-002217

July 31, 2017

Day Shift

1,098 Acres (Meyers)

2,340 Acres (Whetstone Ridge)

as of 07/29/2017

at 2329 hrs

UTM NAD83 Zone 12

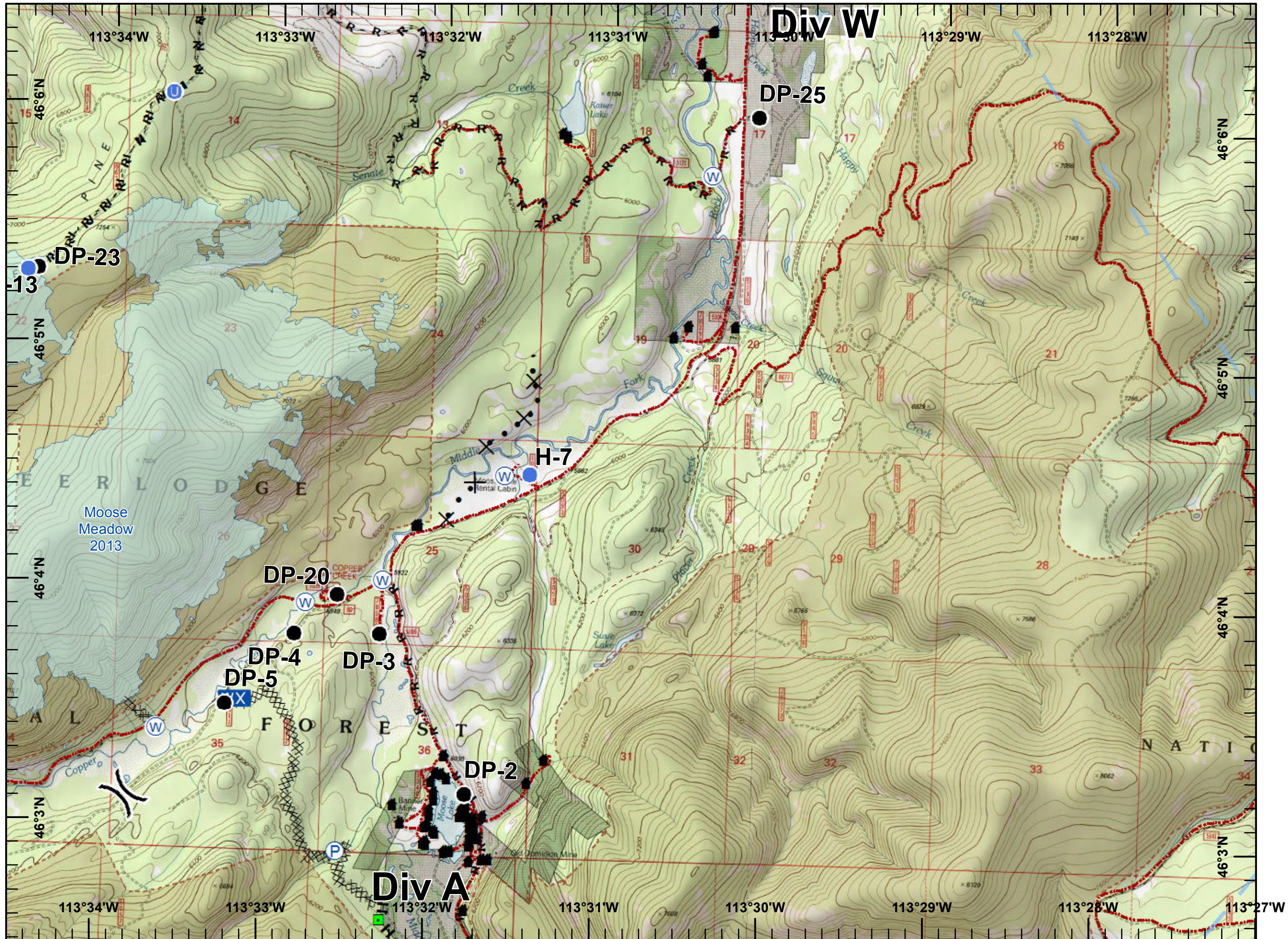
Page 11 of 12

Div W(s)



Legend

- Drop Point
- U Unimproved Landing Area
- Helispot
- Landmark
- WX Mobile Weather Unit
- P Pump
- W Water Source
-) Division Break
- XXXX Completed Dozer Line
- H - Completed Hand Line
- R - Road as Completed Line
- X Proposed Dozer Line
- Temporary Flight Restriction
- Fire History
- ▲ Structure
- Roads
- Trails
- Inventoried Roadless Area



Whetstone Ridge & Meyers Fires

MT-BDF-002213-002217

July 31, 2017

Day Shift

1,098 Acres (Meyers)

2,340 Acres (Whetstone Ridge)

as of 07/29/2017

at 2329 hrs

UTM NAD83 Zone 12

Page 12 of 12

ICP



Legend

- Helispot
- Incident Command Post
- Water Source
- Division Break
- Completed Dozer Line
- Temporary Flight Restriction
- Structure
- Roads

