

116°42'0"W

116°41'0"W

116°40'0"W

116°39'0"W

116°38'0"W

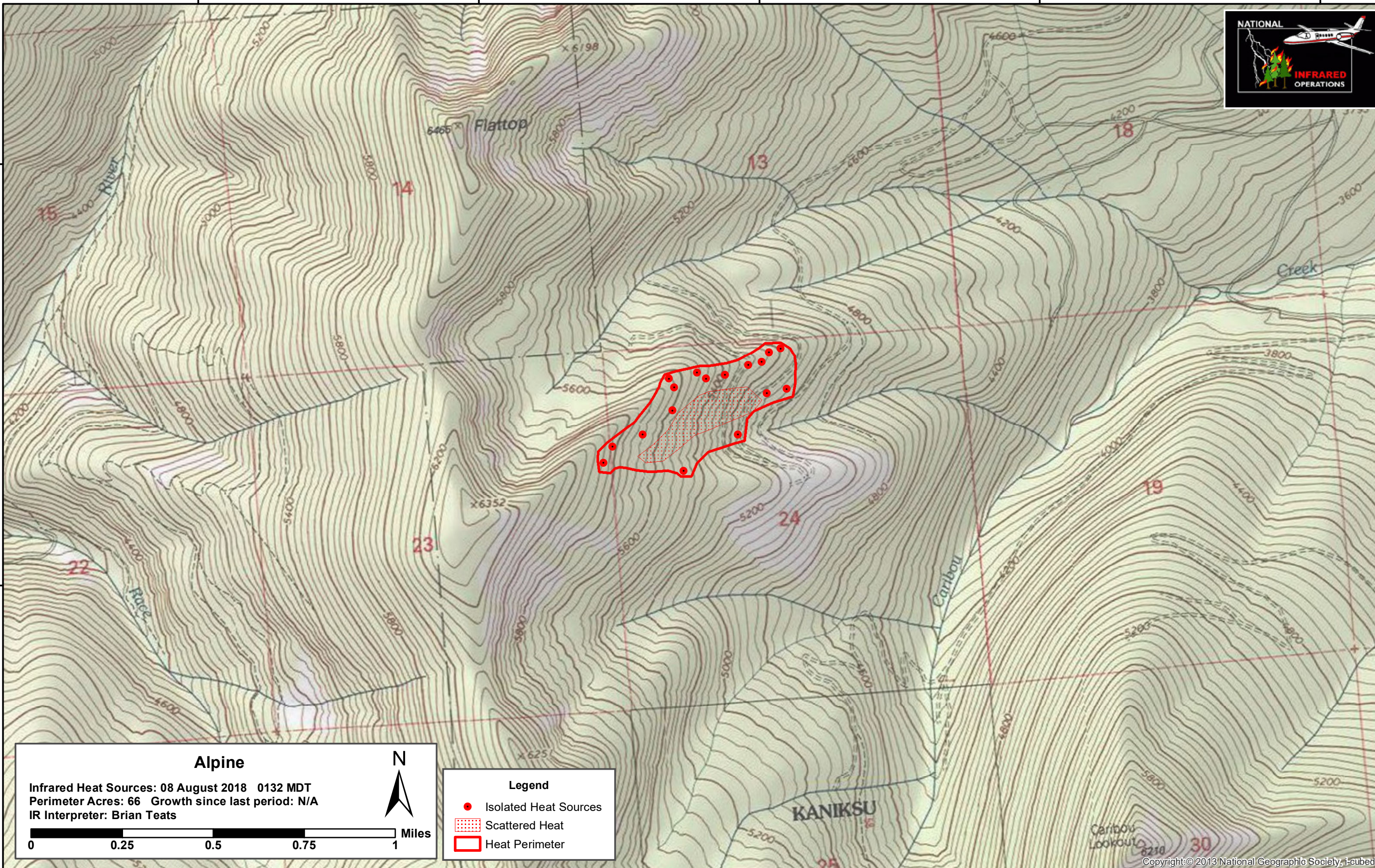


48°28'0"N

48°27'0"N

48°28'0"N

48°27'0"N



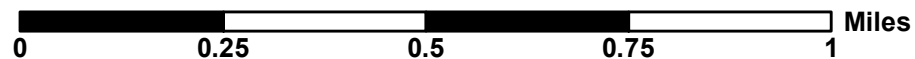
### Alpine

Infrared Heat Sources: 08 August 2018 0132 MDT  
 Perimeter Acres: 66 Growth since last period: N/A  
 IR Interpreter: Brian Teats



#### Legend

- Isolated Heat Sources
- Scattered Heat
- Heat Perimeter



116°42'0"W

116°41'0"W

116°40'0"W

116°39'0"W

Copyright © 2013 National Geographic Society, i-cubed