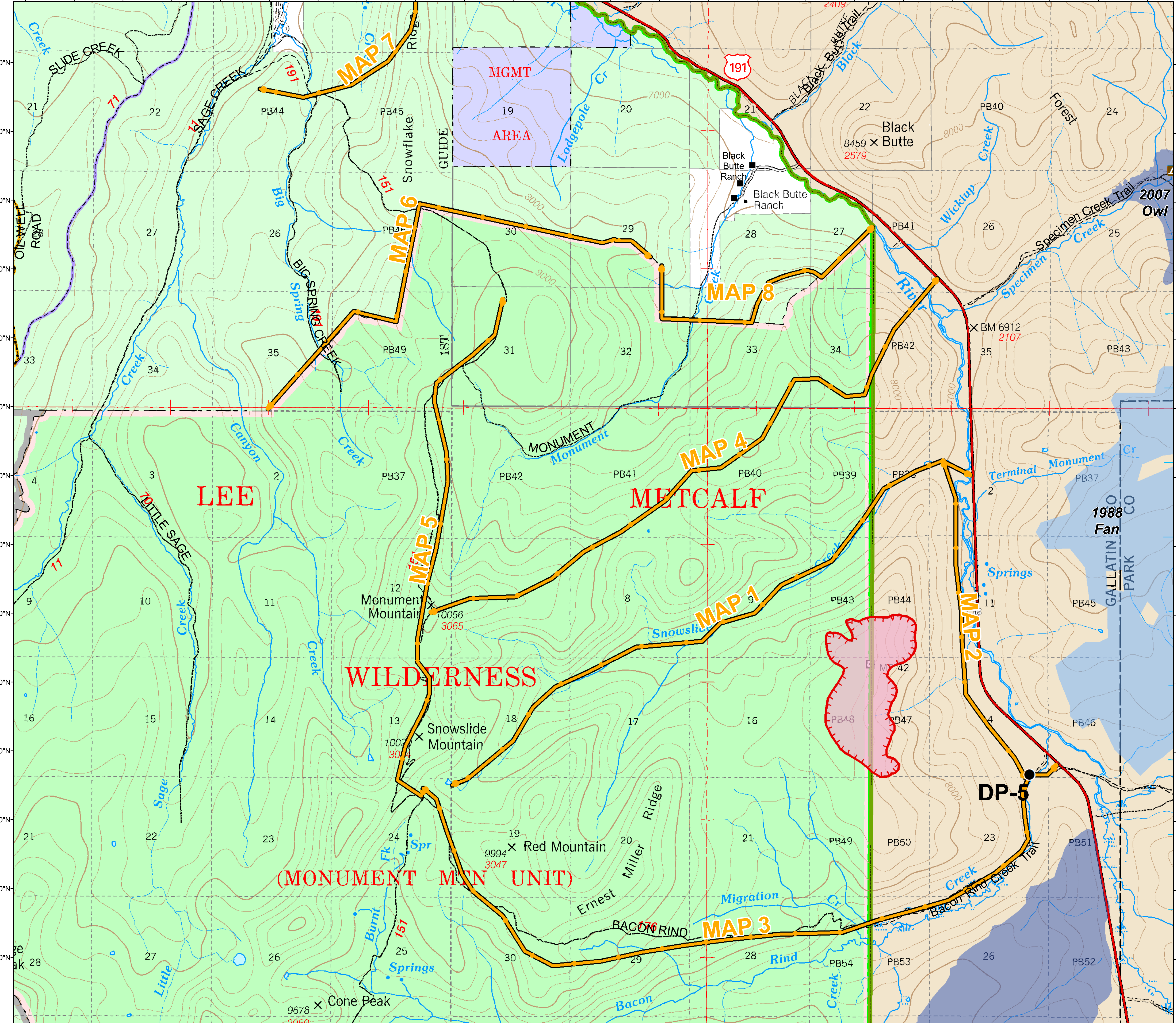


111°14'30"W 111°14°0'W 111°13°30'W 111°13°0'W 111°12°30'W 111°12°0'W 111°11°30'W 111°11°0'W 111°10°30'W 111°10°0'W 111°9°30'W 111°9°0'W 111°8°30'W 111°8°0'W 111°7°30'W 111°7°0'W 111°6°30'W 111°6°0'W 111°5°30'W 111°5°0'W 111°4°30'W 111°4°0'W 111°3°30'W 111°3°0'W



**Bacon Rind**  
MT-CGF-000095  
Operational Period:  
July, 31 2018  
Approx. 411 ac.  
227 ac. USFS, 184 ac. NPS  
as of 07/30/2018 1600

- Drop Point
- Uncontrolled Fire Edge
- Management Action Point
- Wildfire Daily Fire Perimeter
- Structure Locations
- ▲ Backcountry Campsites
- YNP Boundary
- Fire Perimeters: 1988-2015**
- 1988
- 2000 - 2009



**PLANNING MAP**



1988 North Fork

