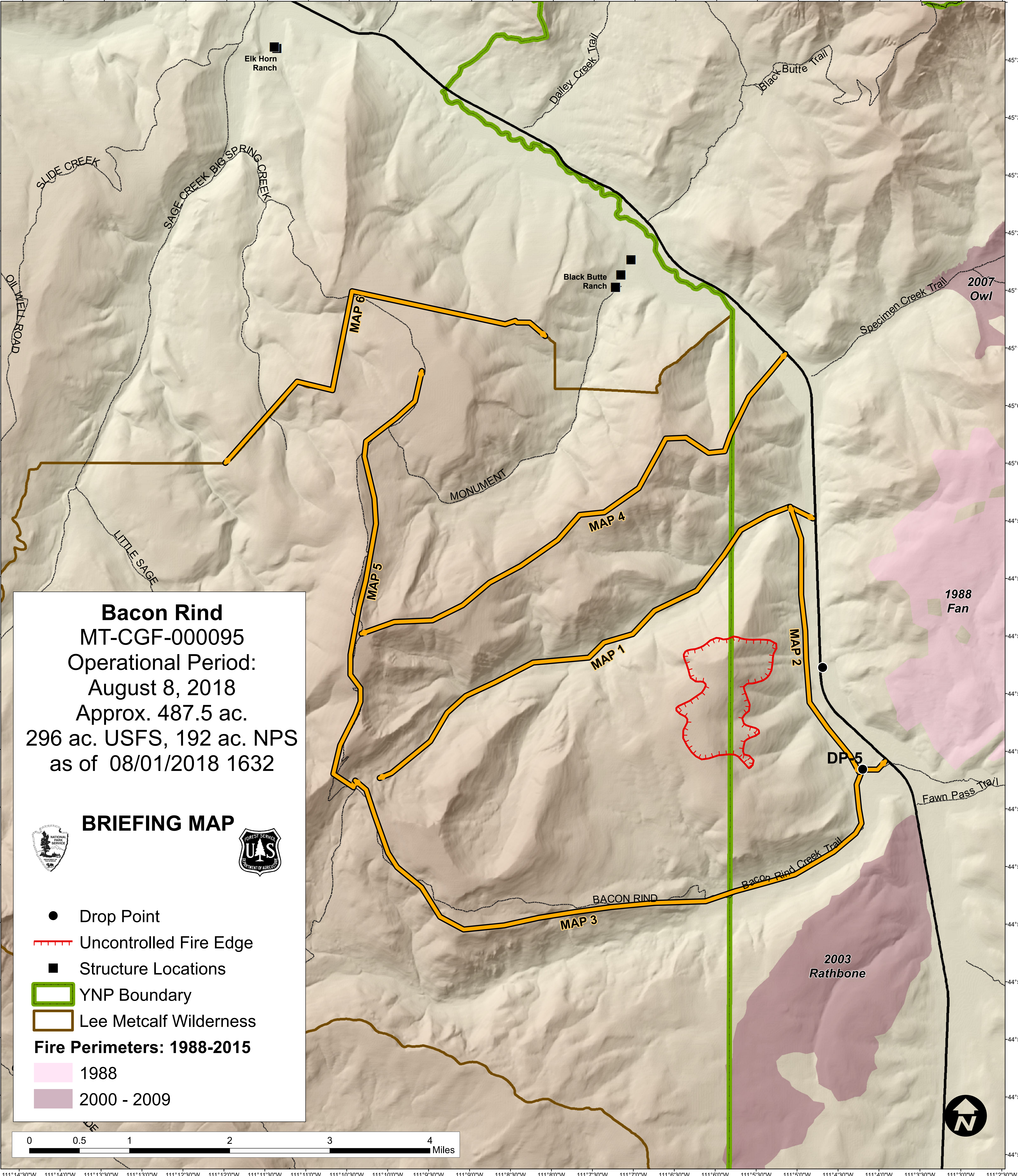


111°14'30"W 111°14'0"W 111°13'30"W 111°13'0"W 111°12'30"W 111°12'0"W 111°11'30"W 111°11'0"W 111°10'30"W 111°10'0"W 111°9'30"W 111°9'0"W 111°8'30"W 111°8'0"W 111°7'30"W 111°7'0"W 111°6'30"W 111°6'0"W 111°5'30"W 111°5'0"W 111°4'30"W 111°4'0"W 111°3'30"W 111°3'0"W 111°2'30"W



**Bacon Rind**  
MT-CGF-000095  
Operational Period:  
August 8, 2018  
Approx. 487.5 ac.  
296 ac. USFS, 192 ac. NPS  
as of 08/01/2018 1632

**BRIEFING MAP**



- Drop Point
  - Uncontrolled Fire Edge
  - Structure Locations
  - ▭ YNP Boundary
  - ▭ Lee Metcalf Wilderness
- Fire Perimeters: 1988-2015**
- ▭ 1988
  - ▭ 2000 - 2009

