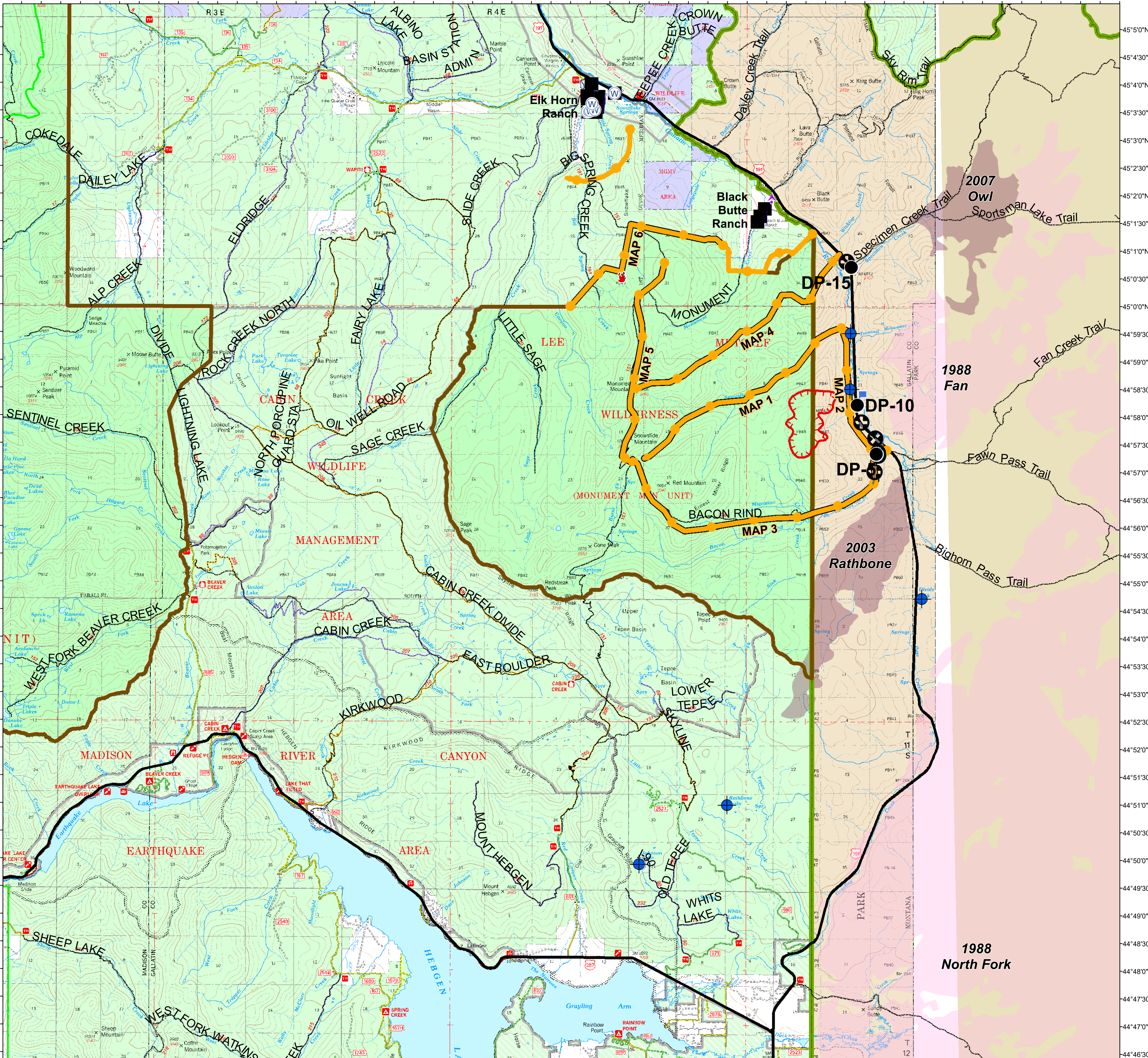


111°26'0"W 111°25'0"W 111°24'0"W 111°23'0"W 111°22'0"W 111°21'0"W 111°20'0"W 111°19'0"W 111°18'0"W 111°17'0"W 111°16'0"W 111°15'0"W 111°14'0"W 111°13'0"W 111°12'0"W 111°11'0"W 111°10'0"W 111°9'0"W 111°8'0"W 111°7'0"W 111°6'0"W 111°5'0"W 111°4'0"W 111°3'0"W 111°2'0"W 111°1'0"W 111°0'0"W 110°59'0"W 110°58'0"W



Bacon Rind
MT-CGF-000095
Operational Period:
August 10, 2018
Approx. 551 ac.
363 ac. USFS, 188 ac. NPS
as of 08/09/2018 1339



PLANNING MAP

- Aerial Hazard
- Dip Site
- Drop Point
- Vanguard Fire Location
- Incident Command Post
- Lookout
- Water Source
- Structure Locations
- Uncontrolled Fire Edge
- Management Action Point
- Other
- Lee Metcalf Wilderness
- YNP Boundary

