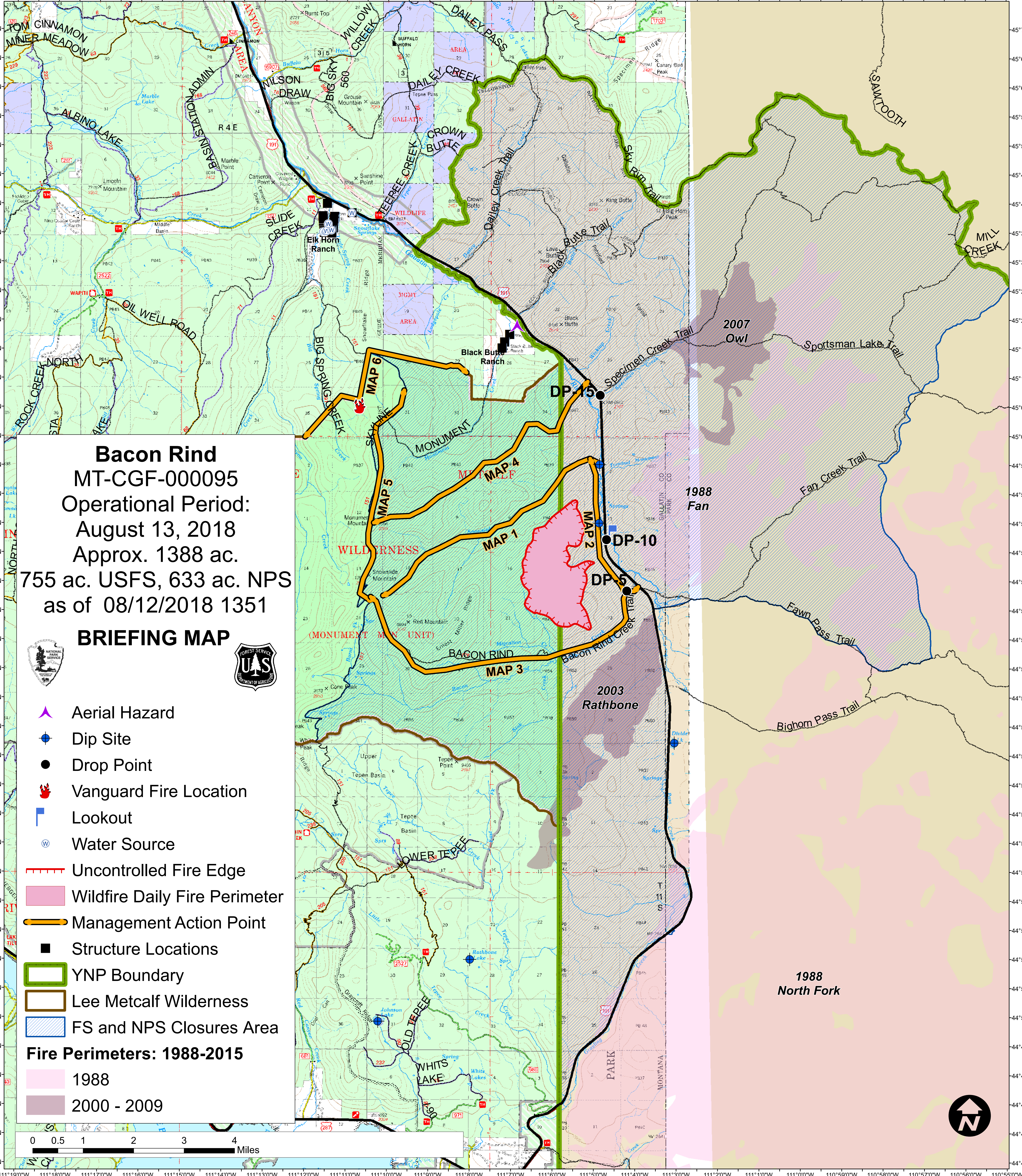


111°19'0"W 111°18'0"W 111°17'0"W 111°16'0"W 111°15'0"W 111°14'0"W 111°13'0"W 111°12'0"W 111°11'0"W 111°10'0"W 111°9'0"W 111°8'0"W 111°7'0"W 111°6'0"W 111°5'0"W 111°4'0"W 111°3'0"W 111°2'0"W 111°1'0"W 111°0'0"W 110°59'0"W 110°58'0"W 110°57'0"W 110°56'0"W 110°55'0"W



Bacon Rind
MT-CGF-000095
Operational Period:
August 13, 2018
Approx. 1388 ac.
755 ac. USFS, 633 ac. NPS
as of 08/12/2018 1351

BRIEFING MAP



- Aerial Hazard
- Dip Site
- Drop Point
- Vanguard Fire Location
- Lookout
- Water Source
- Uncontrolled Fire Edge
- Wildfire Daily Fire Perimeter
- Management Action Point
- Structure Locations
- YNP Boundary
- Lee Metcalf Wilderness
- FS and NPS Closures Area

Fire Perimeters: 1988-2015

- 1988
- 2000 - 2009

