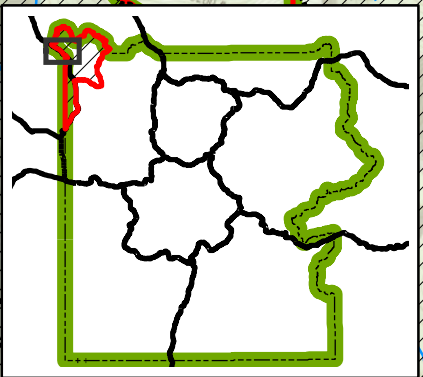
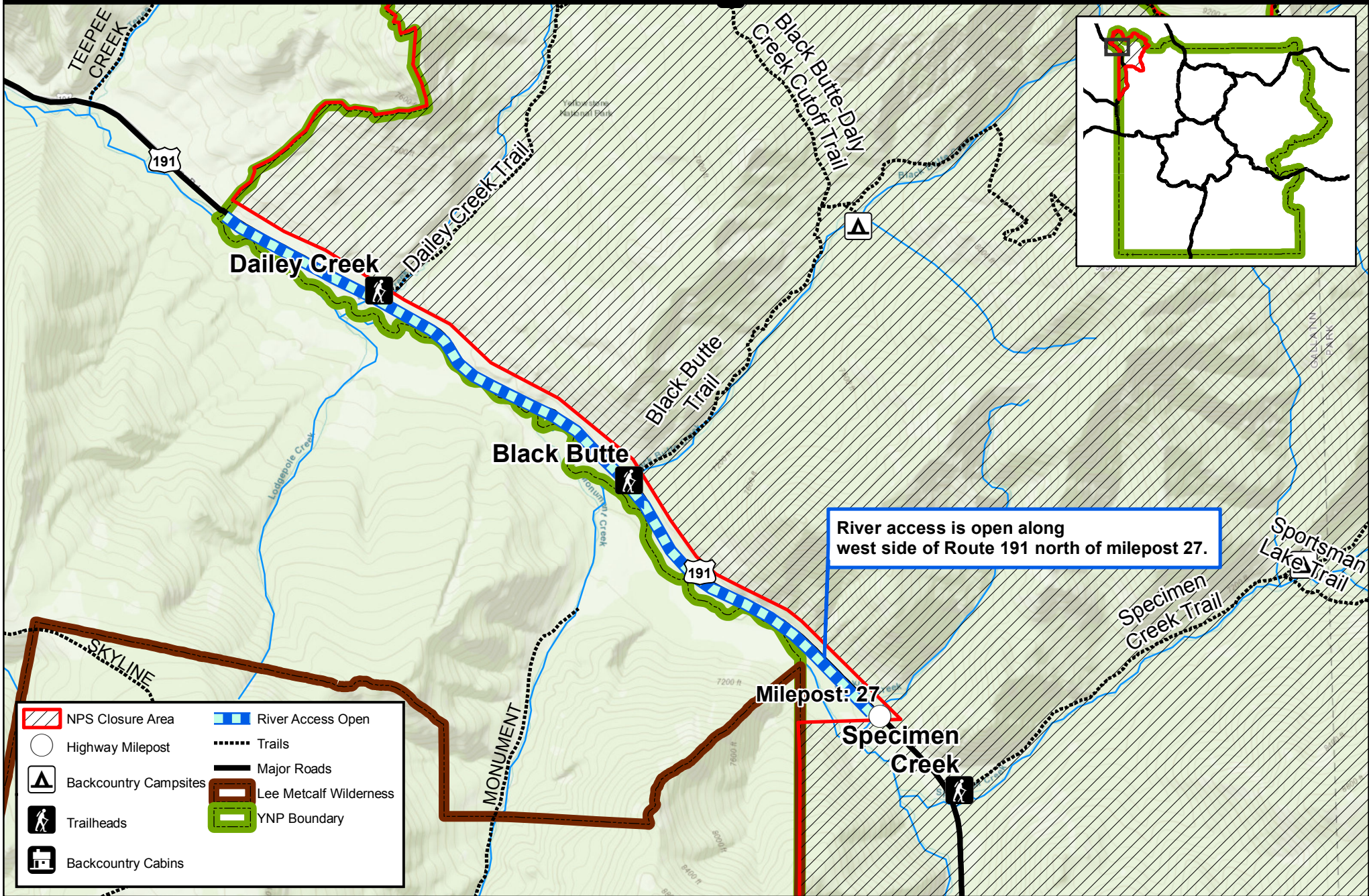
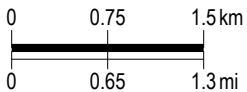


# NPS Closure Area for Bacon Rind Fire



River access is open along west side of Route 191 north of milepost 27.

- NPS Closure Area
- River Access Open
- Highway Milepost
- Trails
- Backcountry Campsites
- Major Roads
- Lee Metcalf Wilderness
- Trailheads
- YNP Boundary
- Backcountry Cabins



Service Layer Credits: Sources: Esri, HERE, Garmin, Intermap, increment P Corp., GEBCO, USGS, FAO, NPS, NRCAN, GeoBase, IGN, Kadaster NL, Ordnance Survey, Esri Japan, METI, Esri China (Hong Kong), swisstopo, © OpenStreetMap contributors, and the GIS User Community

