

# **Bacon Rind Fire**

## **Incident Action Plan**

**Wednesday August 22, 2018**  
**Custer Gallatin National Forest**

**ICS Form 202**

|  |                                |                                      |                                   |
|--|--------------------------------|--------------------------------------|-----------------------------------|
| <b>INCIDENT OBJECTIVES</b>   | 1. INCIDENT NAME<br>Bacon Rind | 2. DATE<br>8/22/2018                 | 3. TIME<br>0700                   |
| 4. OPERATIONAL PERIOD (DATE/TIME)  |                                |                                      |                                   |
| 5. GENERAL CONTROL OBJECTIVES FOR THE INCIDENT (INCLUDE ALTERNATIVES)  |                                |                                      |                                   |
| <p><b>Leader's Intent:</b></p> <p>The highest priority will be focused on minimizing risk to firefighters and the public, by continually using the risk management process.</p> <p>It is the expectation that every person assigned in any type of leadership role does a risk assessment and provides the appropriate mitigation measures prior to engaging in any activity. If a hazard cannot be mitigated to an acceptable level, the issue will be elevated to the next level.</p> <p><b>Management Requirements:</b></p> <ul style="list-style-type: none"> <li>- Ensure firefighter and public safety is the first priority in every operation.</li> <li>- Maintain and develop relationships with adjacent communities, agencies, cooperators, concessionaires and other stakeholders while providing timely and consistent information coordinated with the USFS. A common message will be communicated thru all channels.</li> </ul> <p><b>Incident Objectives</b></p> <ol style="list-style-type: none"> <li>1. Minimize impacts to identified values at risk, including Black Butte Ranch, Elkhorn Ranch, Highway 191, powerline corridors, and trail infrastructure.</li> <li>2. Balance resource value with suppression impacts; where and when appropriate, allow fire to play its natural role in the wilderness ecosystem as a process of ecological change.</li> <li>3. Minimize impacts to natural and cultural resources, watersheds, and threatened and endangered species. Minimize suppression impacts in the Lee Metcalf Wilderness by allowing no mechanized equipment unless approved by the line officer.</li> <li>4. Minimize potential bear/human interactions. All personnel assigned to the incident must comply with the Food Storage Special Order 36 CFR 261.58, in effect for the Greater Yellowstone Ecosystem (GYE).</li> </ol> |                                |                                      |                                   |
| 6. WEATHER FORECAST FOR OPERATIONAL PERIOD   |                                | *See attached                        |                                   |
| 7. GENERAL SAFETY MESSAGE  |                                | *See attached                        |                                   |
| <p>Primary risk factors are remote and isolated work areas requiring a functioning communication system and aviation hazards.</p> <p>One of the greatest incident risk is driving Hwy 191. Beware of your safety and public watching the fire.</p>   |                                |                                      |                                   |
| 8. Attachments (X if attached)   |                                |                                      |                                   |
| X Organization List (ICS 203)  |                                | X Medical Plan (ICS 206)             | X <u>Fire Weather Forecast</u>    |
| X Assignment List (ICS 204)  |                                | X Incident Map                       |                                   |
| X Communications Plan (ICS 205)  |                                | X Air Ops (ICS 220)                  | X <u>Fire Information Message</u> |
| 9. PREPARED BY (PLANNING SECTION CHIEF)  |                                | 10. APPROVED BY (INCIDENT COMMANDER) |                                   |
| B. Smith <i>Becky Smith</i>  |                                | <i>Bob Turner</i>                    |                                   |

## Organization Assignment List, ICS Form 203

| <b>ORGANIZATION ASSIGNMENT LIST</b>  |                        |        | 1. INCIDENT NAME<br>Bacon Rind  | 2. DATE PREPARED<br>8/21/2018 | 3. TIME PREPARED<br>1900 |
|--------------------------------------|------------------------|--------|---|-------------------------------|--------------------------|
| POSITION                             | NAME                   | DAY 14 | <b>4. OPERATIONAL PERIOD (DATE/TIME)</b><br><b>8/22/2018; 0700-2000</b> |                               |                          |
| <b>5. INCIDENT COMMAND AND STAFF</b> |                        |        | <b>9. OPERATIONS SECTION</b>  |                               |                          |
| INCIDENT COMMANDER                   | Anthony Martinez       | 9/2    | CHIEF   | Steve Smith 8/25              |                          |
| DEPUTY ICT3t                         | Brad Bergman           | 8/30   | DEPUTY  | Anthony Emacio(t) 8/31        |                          |
| SAFETY OFFICER                       | Dennis Talbert         | 8/31   | a. BRANCH I- DIVISION/GROUPS  |                               |                          |
|                                      | Russell Owen(t)        | 8/31   | BRANCH DIRECTOR   |                               |                          |
| INFORMATION OFFICERS                 | Jeff Gildehaus         | 8/26   | DEPUTY  |                               |                          |
| LIAISON OFFICER                      | J. Michael Johnson     | 9/1    | DIVISION/GROUP  |                               |                          |
|                                      | Brian Thompson         |        | DIVISION/ GROUP   |                               |                          |
| <b>6. AGENCY REPRESENTATIVES</b>     |                        |        | DIVISION/ GROUP   |                               |                          |
| AGENCY                               | NAME                   |        | DIVISION/ GROUP   |                               |                          |
| USFS                                 | Jason Brey             |        | DIVISION/GROUP  |                               |                          |
| Gallatin Co.                         | Patrick Lonergan       |        | DIVISION /GROUP   |                               |                          |
| Yellowstone NP                       | John Cataldo           |        | DIVISION /GROUP   |                               |                          |
| <b>7. PLANNING SECTION</b>           |                        |        | b. BRANCH II- DIVISIONS/GROUPS  |                               |                          |
| CHIEF                                | Becky Smith 8/25       |        | BRANCH DIRECTOR   |                               |                          |
| RESOURCES UNIT                       |                        |        | DEPUTY  |                               |                          |
| SITUATION UNIT                       |                        |        | DIVISION/GROUP  |                               |                          |
| DOCUMENTATION UNIT                   |                        |        | DIVISION/GROUP  |                               |                          |
| DEMOBILIZATION UNIT                  |                        |        | DIVISION/GROUP  |                               |                          |
| GISS                                 | Joel Harrison 8/30     |        | c. BRANCH III- DIVISIONS/GROUPS   |                               |                          |
| LTANt                                |                        |        | BRANCH DIRECTOR   |                               |                          |
| REAF (USFS)                          | Randy Scarlett         |        | DEPUTY  |                               |                          |
| READ(t) (NPS)                        | Brian Teets            |        | DIVISION/GROUP  |                               |                          |
| <b>8. LOGISTICS SECTION</b>          |                        |        | DIVISION/GROUP  |                               |                          |
| CHIEF                                | Lloyd Kortge/Norm Buhl |        | d. AIR OPERATIONS BRANCH  |                               |                          |
| DEPUTY                               |                        |        | AIR OPERATIONS BR. DIR.   |                               |                          |
| a. SUPPORT BRANCH                    |                        |        | AIR TACTICAL GROUP SUP.   |                               |                          |
| DIRECTOR                             |                        |        | AIR SUPPORT GROUP SUP.  |                               |                          |
| SUPPLY UNIT                          |                        |        | HELICOPTER COORDINATOR  |                               |                          |
| FACILITIES UNIT                      | Rudy Schlegel          |        | AIR TANKER/FIXED WING CRD.  |                               |                          |
| GROUND SUPPORT UNIT                  |                        |        | <b>10. FINANCE/ADMINISTRATION SECTION</b>                               |                               |                          |
| b. SERVICE BRANCH                    |                        |        | CHIEF   | Fauzia Massey                 |                          |
| DIRECTOR                             |                        |        | IBA   | Roger Gowan                   |                          |
| COMMUNICATIONS UNIT                  |                        |        | TIME UNIT   | Lessie Sites                  |                          |
| EMTL                                 | Jon Euland             |        | PROCUREMENT UNIT  |                               |                          |
| FOOD UNIT                            |                        |        | COMPENSATION/CLAIMS UNIT  |                               |                          |
| PREPARED BY (PSC3)                   |                        |        | COST UNIT   |                               |                          |
| B. Smith                             |                        |        |   |                               |                          |



RAWS Station at fire

## Fire Weather Forecast

Spot Forecast for Bacon Rind...USFS  
National Weather Service Billings MT  
325 PM MDT Tue Aug 21 2018

### .DISCUSSION...

Look for warmer temps and lower RH Wednesday and a chance of showers and perhaps a thunderstorm late. Drier and warmer conditions are expected for Thursday with afternoon RH possibly dropping down into the teens at the lower elevations of the fire site. BT

### .WEDNESDAY...

Sky/weather.....Mostly sunny. Patchy fog in the morning. Isolated to scattered rain showers and thunderstorms in the afternoon.

LAL.....2...1 to 8 strikes/15 min/cell.

Max temperature.....69-75 at lower elev and 56-64 at upper elev.

Min humidity.....22-31 percent at lower elev and 37-44 percent at upper elev.

Wind (20 ft).....

Slope/valley.....South winds 5 to 10 mph. Gusty and erratic winds expected near thunderstorms in the afternoon.

Ridgetop.....Southwest 10 to 20 mph.

Mixing height.....100 ft AGL in the morning...increasing to 8800 ft AGL in the afternoon.

Transport winds.....South 10 to 20 mph.

Haines index.....3.

CWR.....18 percent.

### .WEDNESDAY NIGHT...

Sky/weather.....Mostly cloudy with scattered rain showers. Scattered thunderstorms in the evening...then isolated thunderstorms overnight.

LAL.....3...9 to 15 strikes/15 min/cell.

Min temperature.....37-46.

Max humidity.....64-86 percent based on elev.

Wind (20 ft).....

Slope/valley.....terrain driven 5 to 10 mph. Gusty and erratic winds expected near thunderstorms in the evening.

Ridgetop.....West 10 to 20 mph.

Mixing height.....8800 ft AGL in the evening...decreasing to 100 ft AGL overnight.

Transport winds.....Southwest 10 to 20 mph.

CWR.....32 percent.

### .THURSDAY...

Sky/weather.....Sunny.

LAL.....1...no thunderstorms.

Max temperature.....69-77 at bottom elev to 64-69 at upper elev.

Min humidity.....18-25 percent at bottom elev and 24-32 at upper elev.

Wind (20 ft).....

Slope/valley.....West winds 5 to 10 mph.

Ridgetop.....West 15 to 25 mph.

Mixing height.....100 ft AGL in the morning...increasing to 8700 ft AGL in the afternoon.

Transport winds.....West 10 to 20 mph.

Haines index.....3.

CWR.....0 percent

**ASSIGNMENT LIST**

3. INCIDENT NAME  
Bacon Rind

4. OPERATIONAL PERIOD  
DATE 8/22/2018 TIME 0700-2000

5. OPERATIONAL PERSONNEL

OPERATIONS CHIEF S. Smith/A. Emacio(t) DIVISION/GROUP SUPERVISOR \_\_\_\_\_  
BRANCH DIRECTOR \_\_\_\_\_ AIR TACTICAL GROUP SUPERVISOR \_\_\_\_\_

6. RESOURCES ASSIGNED TO THIS PERIOD

| STRIKE TEAM/TASK FORCE/<br>RESOURCE DESIGNATOR | EMT | LEADER                   | NUMBER<br>PERSONS | TRANS.<br>NEED | Last<br>Day | PICKUP<br>PT./TIME | DROP OFF<br>PT./TIME |
|--|-----|--------------------------|-------------------|----------------|-------------|--------------------|----------------------|
| DIV  |     | Schreiner                | 1                 | N              | 8/27        | 1200               | 2000                 |
| TFLD   |     | Hoppe                    | 1                 | N              | 8/23        | 0700               | 2000                 |
| Custer Gallatin (C-9)                          | 1   | Ray/Fleming(t)           | 20                | N              | 9/1         | 0700               | 2000                 |
| Hooper Bay 1 (C-8)                             |     | Simon                    | 19                | N              | 8/29        | 0700               | 2000                 |
| E641 CG Ashland (E-24)                         |     | Bloxham                  | 2                 | N              | 8/29        | 0700               | 2000                 |
| E22 CG Beartooth (E-29)                        | 1   | Stabio                   | 3                 | N              | 8/30        | 0700               | 2000                 |
| E621 Wisconsin                                 |     | Moffet                   |                   | N              |             | 0700               | 2000                 |
| E622 Coronado                                  |     | Grambs                   | 6                 | N              |             | 1200               | 2000                 |
| Line EMT                                       | 1   | Euland                   | 1                 | N              | 9/2         | 0700               | 2000                 |
| NPS LE (6W33, 5A47,<br>5A48)                   |     | Rick/Perchalski/<br>Goss | 2                 | N              | 9/3         | 0700               | 2200                 |

7. CONTROL OPERATIONS

**Task:** Monitor fire progression and smoke impacts from Hwy 191. Implement holding actions as needed along Hwy 191. Continue implementing fuels projects and providing lookouts.

**Purpose:** Provide for public and firefighter safety.

**End State:** Ensure efficient traffic flow on Hwy 191.

8. SPECIAL INSTRUCTIONS

- Coordinate actions with other operational resources and law enforcement as needed.
- Monitor Management Action Points as necessary based on observed and modeled fire behavior to emphasize strategic planning and sound risk decision making.
- If fire spots east of Hwy 191 suppress with resources on incident.
- **Do not draft out of the Madison River for the Bacon Rind fire; the Madison River water needs to stay in the Madison drainage and the Gallatin River water needs to stay in the Gallatin drainage due to aquatic invasive species!**

Link to NIFC FTP maps of Bacon Rind Fire



9. DIVISION/GROUP COMMUNICATIONS SUMMARY

| FUNCTION |        | FREQ.          | SYSTEM | CHAN. | FUNCTION |        | FREQ.          | SYSTEM | CHAN. |
|----------|--------|----------------|--------|-------|----------|--------|----------------|--------|-------|
| COMMAND  | LOCAL  | See Comm. Plan |        |       | SUPPORT  | LOCAL  | See Comm. Plan |        |       |
|          | REPEAT |                |        |       |          | REPEAT |                |        |       |

PREPARED BY (PSC3)  
B. Smith



---

## **SAFETY MESSAGE**

**Q: What Do Teams With a Great Safety Culture Have In Common?**

**A: Their Leader is more of a Safety Coach than a Safety Officer.**

**How Do You Act Like a Coach when it comes to Safety?**

- A. Actively listen - by listening to employees and asking questions before you correct an unsafe behavior, you completely change the paradigm and you show them that you value and respect them as a person.**
- B. Give timely and constructive feedback—knowing how to give effective feedback is absolutely essential for a great safety leader. It should be balanced (start with the positive, then discuss where they can improve; constructive rather than negative; and should be given as soon after the behavior as possible).**
- c. Keep it positive—people respond best to positive interactions and positive reinforcement. Always try to keep your interactions positive, professional, and respectful.**

**Team Safety Officers Coaches: Dennis Talbert, Russell Owen (t) and You!**

---

|   |  |   |                          |  |                      |    |             |    |
|---|--|---|--------------------------|--|----------------------|----|-------------|----|
| <b>MEDICAL PLAN</b>   | 1. Incident Name<br>Bacon Rind                                       | 2. Date Prepared<br>08/05/18            | 3. Time Prepared<br>1130 | 4. Operational Period<br>8/21/2018                       |                      |    |             |    |
| <b>5. Incident Medical Aid Station</b>  |  |   |                          |  |                      |    |             |    |
| Name  |  | Address                                 |                          | Phone  | Paramedics<br>Yes No |    |             |    |
| West Yellowstone Clinic   |  | 11 Electric St,<br>West Yellowstone, MT |                          | 406-646-9441   | x                    |    |             |    |
| <b>6. Transportation</b>  |  |   |                          |  |                      |    |             |    |
| A. Ambulance Services   |  |   |                          |  |                      |    |             |    |
| Name  |  | Address                                 |                          | Phone  | Paramedics<br>Yes No |    |             |    |
| West Yellowstone EMS  |  | West Yellowstone                        |                          | 406-646-7600   | x                    |    |             |    |
| Air Evac  |  |   |                          | Call 911 or Dispatch                                     |                      |    |             |    |
| B. Incident Ambulances  |  |   |                          |  |                      |    |             |    |
| Name  |  | Location                                |                          |  | Paramedics<br>Yes No |    |             |    |
|   |  |   |                          |  |                      |    |             |    |
| <b>7. Hospitals</b>   |  |   |                          |  |                      |    |             |    |
| Name  | Address  | Travel Time                             |                          | Phone  | Helipad              |    | Burn Center |    |
|   |  | Air                                     | Ground                   |  | Yes                  | No | Yes         | No |
| Big Sky Hospital  | 334 Town Center Ave. Big Sky<br>MT                                   | 20 m                                    | 45 m                     | 406-995-6995   | X                    |    |             | X  |
| Bozeman<br>Deaconess  | 915 Highland Blvd. Bozeman MT<br><b>Level 3 Trauma Center</b>        | 40 m                                    | 90 m                     | 406-585-1000   | X                    |    |             | X  |
| Eastern ID<br>Regional Medical<br>Center  | 3100 Channing Way<br>Idaho Falls, ID<br><b>Level 2 Trauma Center</b> | 60 m                                    | 2 hr                     | 208-529-6111   | X                    |    |             | X  |
| Salt Lake City<br>Burn Center   | Salt Lake City, Utah<br><b>Level 1 Trauma Center</b>                 |   | 5 hr                     | Burn Center<br>801-581-3050<br>Emergency<br>801-581-2292 | X                    |    | X           |    |
| <b>8. Medical Emergency Procedures</b>  |  |   |                          |  |                      |    |             |    |
| <ul style="list-style-type: none"> <li>• <b>FOR A NON-EMERGENCY INCIDENT, WORK THROUGH CHAIN OF COMMAND TO REPORT AND TRANSPORT INJURED PERSONNEL AS NECESSARY.</b></li> <li>• <b>FOR A MEDICAL EMERGENCY: IDENTIFY ON SCENE INCIDENT COMMANDER BY NAME AND POSITION AND ANNOUNCE "MEDICAL EMERGENCY" TO INITIATE RESPONSE FROM IMT COMMUNICATIONS/DISPATCH.</b></li> </ul> |  |   |                          |  |                      |    |             |    |
| Prepared by (PSC3)<br>B. Smith  |  |   |                          | 10. Reviewed by (Safety Officer)<br>Talbert/Owen(t)      |                      |    |             |    |



# MEDICAL PLAN (ICS 206 WF)

Controlled Unclassified Information//Basic

## Medical Incident Report

- FOR A NON-EMERGENCY INCIDENT, WORK THROUGH CHAIN OF COMMAND TO REPORT AND TRANSPORT INJURED PERSONNEL AS NECESSARY.
- FOR A MEDICAL EMERGENCY: IDENTIFY ON SCENE INCIDENT COMMANDER BY NAME AND POSITION AND ANNOUNCE "**MEDICAL EMERGENCY**" TO INITIATE RESPONSE FROM IMT COMMUNICATIONS/DISPATCH.

Use the following items to communicate situation to dispatch:

1. **CONTACT COMMUNICATIONS / DISPATCH** (Verify correct frequency prior to starting report)  
Ex: "Communications, Div. Alpha. Stand-by for Emergency Traffic."
2. **INCIDENT STATUS:** Provide incident summary (including number of patients) and command structure.  
Ex: "Communications, I have a Red priority patient, unconscious, struck by a falling tree. Requesting air ambulance to Forest Road 1 at (Lat./Long.) This will be the Trout Meadow Medical, IC is TFLD Jones. EMT Smith is providing medical care."

|   |  |  |
|---|--|--|
| Severity of Emergency / Transport Priority        | <input type="checkbox"/> <b>RED / PRIORITY 1</b> Life or limb threatening injury or illness. Evacuation need is <b>IMMEDIATE</b><br>Ex: Unconscious, difficulty breathing, bleeding severely, 2 <sup>o</sup> – 3 <sup>o</sup> burns more than 4 palm sizes, heat stroke, disoriented.<br><input type="checkbox"/> <b>YELLOW / PRIORITY 2</b> Serious injury or illness. Evacuation may be <b>DELAYED</b> if necessary.<br>Ex: Significant trauma, unable to walk, 2 <sup>o</sup> – 3 <sup>o</sup> burns not more than 1-3 palm sizes.<br><input type="checkbox"/> <b>GREEN / PRIORITY 3</b> Minor injury or illness. <b>Non-Emergency transport</b><br>Ex: Sprains, strains, minor heat-related illness. |  |
| Nature of Injury or Illness & Mechanism of Injury |  | Brief Summary of Injury or Illness (Ex: Unconscious, Struck by Falling Tree) |
| Transport Request                                 |  | Air Ambulance / Short Haul/Hoist Ground Ambulance / Other                    |
| Patient Location                                  |  | Descriptive Location & Lat. / Long. (WGS84)                                  |
| Incident Name                                     |  | Geographic Name + "Medical" (Ex: Trout Meadow Medical)                       |
| On-Scene Incident Commander                       |  | Name of on-scene IC of Incident within an Incident (Ex: TFLD Jones)          |
| Patient Care                                      |  | Name of Care Provider (Ex: EMT Smith)  |

**3. INITIAL PATIENT ASSESSMENT:** Complete this section for each patient as applicable (start with the most severe patient)

Patient Assessment: See IRPG page 106

Treatment:

**4. TRANSPORT PLAN:**

Evacuation Location (if different): (Descriptive Location - drop point, intersection, etc.) or Lat. / Long.) Patient's ETA to Evacuation Location:

Helispot/Extraction Site Size and Hazards:

**5. ADDITIONAL RESOURCES / EQUIPMENT NEEDS:**

Example: Paramedic/EMT, Crews, Immobilization Devices, AED, Oxygen, Trauma Bag, IV/Fluid(s), Splints, Rope rescue, Wheeled litter, HAZMAT, Extrication

**6. COMMUNICATIONS: Identify State Air/Ground EMS Frequencies and Hospital Contacts as applicable**

| Function    | Channel Name/Number       | Receive (RX) | Tone/NAC * | Transmit (TX) | Tone/NAC * |
|-------------|---------------------------|--------------|------------|---------------|------------|
| COMMAND     | Command 1                 | RX 169.925   | 131.8      | TX 163.1625   | 131.8      |
| AIR-TO-GRND | Medical A/G Forest (Tan)  | RX 169.1500  | n/a        | TX 169.1500   | n/a        |
| AIR-TO-GRND | Medical A/G Park (Holmes) | RX 166.8750  | 146.2      | TX 169.4000   | 146.2      |
| TACTICAL    |                           |              |            |               |            |

**7. CONTINGENCY: Considerations:** If primary options fail, what actions can be implemented in conjunction with primary evacuation method? Be thinking ahead.

**8. ADDITIONAL INFORMATION:** Updates/Changes, etc.

**REMEMBER:** Confirm ETA's of resources ordered. Act according to your level of training. Be Alert. Keep Calm. Think Clearly. Act Decisively.

## DEMOB LIST

| Resource Name       | Day 14 | Demob Day |
|---------------------|--------|-----------|
| Castle Mtn 1 (E-21) | n/a    | 8/22      |
| Castle Mtn 2 (E-22) | n/a    | 8/22      |
| Jake Hoppe O-66     | 8/23   | 8/24      |
| Steve Smith         | 8/25   |           |
| Jeff Gildehaus      | 8/26   | 8/27      |
|                     |        |           |

### Management Action Points (MAPs) on the Bacon Rind Fire

#### MAP 1

**Condition:** The fire progresses to and crosses Snowslide Creek to the northwest.

**Actions:**

1. Inform Black Butte Ranch and assess private land infrastructure at Black Butte Ranch; assess the powerline that runs between Black Butte Ranch and Elkhorn Ranch
2. Close Trails 151 and 191 to all non-fire entry
3. Notify Elkhorn Ranch regarding closures that would affect their permitted activities on NFS lands
4. Consider area closures to reduce exposure to the public recreating on YNP and NFS lands.
5. Consider closing Specimen Creek trail to all non-fire entry.

**Resources:** 1-2 crews to assess private infrastructure and close/clear trails of recreationists

#### MAP 2

**Condition:** The fire reaches Highway 191 and Bacon Rind Trailhead Access Road/Bacon Rind Creek

**Actions:**

1. Assess potential suppression actions to reduce impacts along Highway 191. Coordinate with YNP and MT DOT regarding fire becoming established east of Highway 191.
2. Coordinate with MT DOT and YNP regarding impacts to the highway/traffic issues and their management
3. Consider area closures to reduce exposure to the public recreating on YNP and NFS lands.
4. Consider closing Specimen Creek and Fawn pass trails to all non-fire entry.
5. Consider structure protection for patrol cabin and 8-plex cabin in YNP.

**Resources:** Order appropriate resources commensurate with fire behavior and values at risk.

#### MAP 3

**Condition:** Fire progresses south across the Bacon Rind Trail.

**Actions:**

1. Assess the need for additional motorized and hiking trail closures in the TePee and Cabin Creek Wildlife Mngmt Areas
2. Evaluate the need for new management action points to the south.
3. Assess Skyline Repeater for potential protection measures.

**Resources:** 1 Crew for trail closures

#### MAP 4

**Condition:** Fire progresses over the ridgeline separating the Snowslide drainage from the Monument Creek drainage

**Actions:**

1. Implement structure protection and fuels treatment activities at Black Butte Ranch
2. Coordinate with the County Sheriff regarding the potential need for evacuations at Black Butte Ranch
3. Assess private infrastructure at Elkhorn Ranch for suppression/protection actions
4. Consider the need for direct suppression actions to check or slow fire growth in the vicinity of values at risk.
5. Consider closing Black Butte trail to all non-fire entry.

**Resources:** 2 hand crews, 3 type 6 engines, water tender, fold-a-tanks

#### MAP 5

**Condition:** Fire progresses west and crosses Trail 151

**Actions:**

1. Assess need to close additional motorized and hiking trails to the west in the Sage Creek area
2. Notify affected grazing permittees
3. Initiate additional communication with residents, public, and permittees in the Taylor Fork drainage and Gallatin Cnyon
4. Consider area closures to reduce exposure to the public recreating on NFS lands.

**Resources:** 1 crew and overhead

MAP 6

**Condition:** Fire progresses north and west of the wilderness boundary

**Actions:**

1. Implement structure protection actions at Elkhorn Ranch and other private inholdings in Taylor Fork drainage.
2. Consider additional assessment of private structures and Forest Service infrastructure in the Buffalo Horn/Cinnamon/Highway 191 corridor
3. Coordinate with Bozeman RD regarding affected partners, permittees, etc.
4. Coordinate with the County Sheriff regarding the potential need for evacuations.
5. Notify DNRC and MT FWP regarding potential impacts to the Gallatin Wildlife Mgmt Area.
6. Prepare and assess Taylor Fork road for holding and suppression actions.
7. Consider closing Dailey Creek trail to all non-fire entry.

**Resources:** 2 hand crews, 3 type 6 engines, tender, fold-a-tanks

MAP 7

**Condition:** Fire crosses the Fan Creek trail to the south.

**Actions:** Consider closing Bighorn pass trail to all non-fire entry.

**Resources:** Order appropriate resources commensurate with fire behavior and values at risk.

MAP 8

**Condition:** Fire approaches MAP 8.

**Actions:**

1. Consider using aerial resources to deliver water on the YNP and USFS portions of the fire.
2. Consider additional actions to keep the fire west of Highway 191
3. Close Bighorn Trail in YNP
4. Consider the need for additional trail and area closures

**Resources:** Order appropriate resources commensurate with fire behavior and values at risk.

MAP 9

**Condition:** Fire approaches MAP 9

**Actions:**

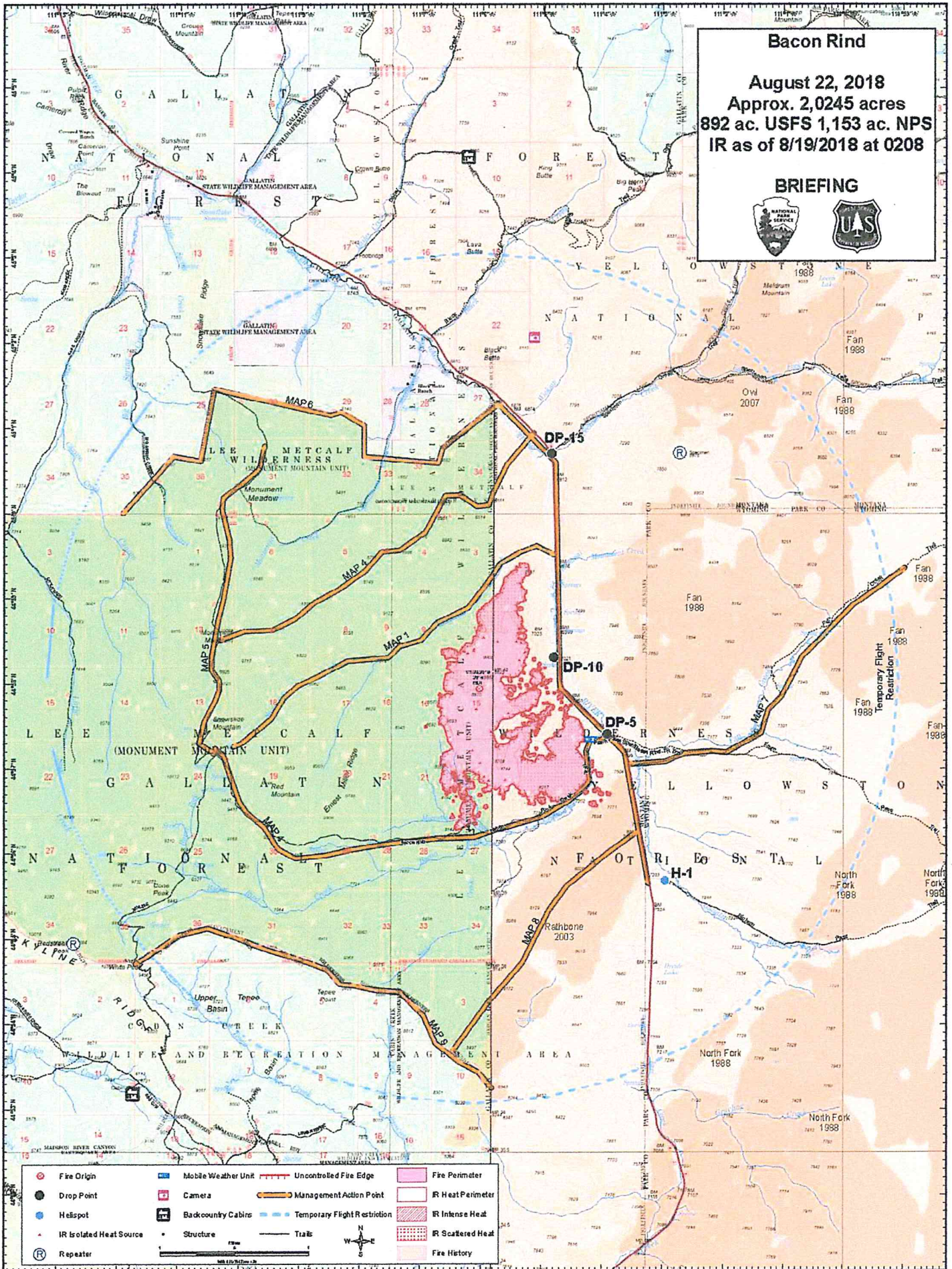
1. Notify outfitters and guides that have permitted operations in the area between Hebgen Lake and the fire.
2. Notify the Contracting Officer for the Tepee Creek Stewardship Project
3. Consider/Implement area closure in Upper Tepee Basin
4. Consider implementation of structure protection at the Cabin Creek Rental Cabin
5. Notify Hebgen Basin Fire; begin structure assessment in the vicinity of subdivisions north of Hebgen Lake/Highway 287.
6. Update DNRC and Gallatin County regarding fire progression.

**Resources:** Order appropriate resources commensurate with fire behavior and values at risk.

# Bacon Rind

August 22, 2018  
Approx. 2,0245 acres  
892 ac. USFS 1,153 ac. NPS  
IR as of 8/19/2018 at 0208

## BRIEFING



**Bacon Rind**  
Approx. 2,045 ac  
MT-CGF-000095

**IAP**  
August 22, 2018

|  |                         |
|--|-------------------------|
|  | Fire Origin             |
|  | Helispot                |
|  | Drop Point              |
|  | IR Isolated Heat Source |
|  | Lookout                 |
|  | Mobile Weather Unit     |
|  | Pump                    |
|  | Water Source            |
|  | Uncontrolled Fire Edge  |
|  | Fire Perimeter          |
|  | Heat Perimeter          |
|  | IR Intense Heat         |
|  | IR Scattered Heat       |

