

# Bacon Rind Fire

## Incident Action Plan

PUBLIC

Saturday July 28, 2017  
Custer Gallatin National Forest

### Managing Vehicle Traffic in Smoke

Category:  
Vehicles - Roads




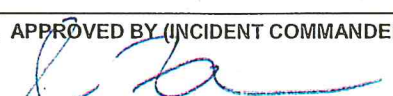
Smoke has the potential to cause safety hazards to vehicle traffic in the vicinity of active fires (both wildfires and prescribed), especially at night. The following traffic-related items should be considered and addressed in local unit planning documents prior to an incident/project.

- Identification, location, and phone numbers of local units that have law enforcement and traffic control responsibilities in the smoke-impacted areas. Review any local agreements with these agencies presently in place.
- Identification of important, public roads that may be impacted by smoke.
- Identification of adequate equipment and trained personnel to control traffic. This may include warning signs, communications equipment (preferably not using the active fire frequency) and vehicles equipped with warning or flashing lights.
- Identification and phone numbers of radio and television stations that can issue traffic advisories for the smoke-impacted area.
- Identification of alternative traffic routes as part of the incident/project traffic plan.
- Identification of traffic routes subject to temperature inversions as well as contributory factors such as fog and ice.
- When potential smoke-related problems are identified:
  - Advise the Incident Commander, Burn Boss, or Agency Administrator that severe smoke exists.
  - Notify local law enforcement units and highway departments of a potential problem.
  - Implement preplanned actions such as posting smoke warning signs.
  - Ensure that proper equipment is ready, and appropriate personnel are briefed on contingency plans and are available to control traffic.

MT-CGF-000095 P1L06418 (0111)

Cost Center: PPIMIMRO2D WBS: PF.FSEKS9018.00.1

**ICS Form 202**

<b>INCIDENT OBJECTIVES</b>	1. INCIDENT NAME Bacon Rind	2. DATE 7-28-18	3. TIME
4. OPERATIONAL PERIOD (DATE/TIME)			
5. GENERAL CONTROL OBJECTIVES FOR THE INCIDENT (INCLUDE ALTERNATIVES)			
<p><b>Leader's Intent:</b> The highest priority will be focused on minimizing risk to firefighters and the public, by continually using the risk management process.</p> <p>It is the expectation that every person assigned in any type of leadership role does a risk assessment and provides the appropriate mitigation measures prior to engaging in any activity. If a hazard cannot be mitigated to an acceptable level, the issue will be elevated to the next level.</p> <p><b>Management Requirements:</b></p> <ul style="list-style-type: none"> <li>- Ensure firefighter and public safety is the first priority in every operation.</li> <li>- Maintain and develop relationships with adjacent communities, agencies, cooperators, concessionaires and other stakeholders while providing timely and consistent information coordinated with the USFS. A common message will be communicated thru all channels.</li> </ul> <p><b>Incident Objectives</b></p> <ol style="list-style-type: none"> <li>1. Minimize Impacts to identified values at risk, including Black Butte Ranch, Elkhorn Ranch, Highway 191, powerline corridors and trail infrastructure.</li> <li>2. Balance resource value with suppression impacts; where and when appropriate, allow fire to play its natural role in the wilderness ecosystem as a process of ecological change.</li> <li>3. Minimize impacts to natural and cultural resources, watersheds, and threatened and endangered species. Minimize suppression impacts in the Lee Metcalf Wilderness by allowing no mechanized equipment unless approved by the line officer.</li> <li>4. Minimize potential bear/human interactions. All personnel assigned to the incident must comply with the Food Storage Special Order 36 CFR 261.58, in effect for the Greater Yellowstone Ecosystem (GYE).</li> </ol>			
6. WEATHER FORECAST FOR OPERATIONAL PERIOD		*See attached	
7. GENERAL SAFETY MESSAGE		*See attached	
<p>Provide for firefighter and public safety: The highest priority is to protect the safety of fire personnel and to protect human life followed by the protection of structures. All strategic and tactical decisions will be based on sound risk management principles.</p> <p>Primary risk factors are remote and isolated work areas requiring a functioning communication system and aviation hazards. One of the greatest incident risk is driving Hwy 191. Beware of your safety and public watching the fire.</p>			
8. Attachments ( <input checked="" type="checkbox"/> if attached)			
<input type="checkbox"/> Organization List (ICS 203)	<input type="checkbox"/> Medical Plan (ICS 206)	<input type="checkbox"/> Weather Forecast _____	
<input type="checkbox"/> Assignment List (ICS 204)	<input type="checkbox"/> Incident Map	<input type="checkbox"/> _____	
<input type="checkbox"/> Communications Plan (ICS 205)	<input type="checkbox"/> Traffic Plan	<input type="checkbox"/> _____	
9. PREPARED BY (PLANNING SECTION CHIEF)		10. APPROVED BY (INCIDENT COMMANDER)	
			

## Organization Assignment List, ICS Form 203

<b>ORGANIZATION ASSIGNMENT LIST</b>		1. INCIDENT NAME Bacon Rind	2. DATE PREPARED 7/27/18	3. TIME PREPARED
POSITION	NAME	<b>4. OPERATIONAL PERIOD (DATE/TIME)</b> Day July 28		
<b>5. INCIDENT COMMAND AND STAFF</b>		<b>9. OPERATIONS SECTION</b>		
INCIDENT COMMANDER	Jay Fassett	CHIEF	Drew Brown	
DEPUTY ICT3	Jim Gunning	DEPUTY t	Brian Koscielniak	
SAFETY OFFICER	Brian Wilson	a. BRANCH I- DIVISION/GROUPS		
INFORMATION OFFICER	Marianne Baumberger	BRANCH DIRECTOR		
LIAISON OFFICER	Molly Moore	DEPUTY		
<b>6. AGENCY REPRESENTATIVES</b>		DIVISION/GROUP		
AGENCY	NAME	DIVISION/ GROUP		
USFS	Jason Brey	DIVISION/ GROUP		
Gallatin Co.	Patrick Lonergan	DIVISION/GROUP		
DNRC	Greg Archie	DIVISION /GROUP		
Yellowstone NP	John Cataldo	b. BRANCH II- DIVISIONS/GROUPS		
		BRANCH DIRECTOR		
		DEPUTY		
<b>7. PLANNING SECTION</b>		DIVISION/GROUP		
CHIEF	Todd Opperman	DIVISION/GROUP		
DEPUTY		DIVISION/GROUP		
RESOURCES UNIT		DIVISION/GROUP		
SITUATION UNIT		DIVISION/GROUP		
DOCUMENTATION UNIT		c. BRANCH III- DIVISIONS/GRòUPS		
DEMOBILIZATION UNIT		BRANCH DIRECTOR		
TECHNICAL SPECIALISTS		DEPUTY		
GISS	Howard Williams	DIVISION/GROUP		
LTANT	Todd Erdody	DIVISION/GROUP		
REAF (USFS)	Randy Scarlett	DIVISION/GROUP		
REAFt (NPS)	Brian Teets	d. AIR OPERATIONS BRANCH		
<b>8. LOGISTICS SECTION</b>		AIR OPERATIONS BR. DIR.		
CHIEF	Loyd Kortge	AIR TACTICAL GROUP SUP.		
DEPUTY	Jerry Ryder	AIR SUPPORT GROUP SUP.		
a. SUPPORT BRANCH		HELICOPTER COORDINATOR		
DIRECTOR		AIR TANKER/FIXED WING CRD.		
SUPPLY UNIT		<b>10. FINANCE/ADMINISTRATION SECTION</b>		
FACILITIES UNIT		CHIEF	Fauzia Massey	
GROUND SUPPORT UNIT		DEPUTY		
b. SERVICE BRANCH		TIME UNIT		
DIRECTOR		PROCUREMENT UNIT		
COMMUNICATIONS UNIT		COMPENSATION/CLAIMS UNIT		
MEDICAL UNIT		COST UNIT		
FOOD UNIT		<b>PREPARED BY (RESOURCES UNIT)</b>		

# Fire Weather Forecast



Spot Forecast for Bacon Rind...USDA Forest Service  
National Weather Service Billings MT  
611 PM MDT Fri Jul 27 2018

RAWS Station at fire

Location of the portable RAWS is not representative of what is happening at the fire location based on surrounding high elevation observations (Yellow Mule). Broke out the spot to indicate the differences.

The next few days will see similar conditions to today, with Saturday having the better chance to see a shower/thunderstorm. Not expecting big difference in temperatures or humidity. Winds on the fire will be more westerly Saturday and northwesterly on Sunday. Afternoon gusts of 20 to 25 mph can be expected on the fire each afternoon. Overnight RH recoveries look good at all elevations. Chambers

## .SATURDAY...

Sky/weather.....Mostly sunny in the morning...then becoming partly sunny. Scattered rain showers and thunderstorms...mainly in the afternoon.

LAL.....3...9 to 15 strikes/15 min/cell.

Max temperature.....61-66 on the fire...77-81 at the valley floor.

Min humidity.....26-34 percent on the fire...15 to 21 percent at the valley floor.

Wind (20 ft).....

Slope/valley.....West 5 to 15 mph...with gusts to 25 mph after 1 pm on the fire. Up

Slope/Valley 5 to 15 mph at the valley floor.

Ridgetop.....West 8 to 18 mph.

Mixing height.....100 ft AGL in the morning...increasing to 13600 ft AGL in the pm.

Transport winds.....West 5 to 15 mph.

Haines index.....4.

CWR.....20 percent.

## .SATURDAY NIGHT...

Sky/weather.....Mostly cloudy with isolated rain showers and thunderstorms in the evening...then mostly clear overnight.

LAL.....2...1 to 8 strikes/15 min/cell.

Min temperature.....40-48.

Max humidity.....79-84 percent.

Wind (20 ft).....

Slope/valley.....North winds 5 to 15 mph on the fire...down slope/valley 4 to 8 mph at the valley floor. Gusty and erratic winds expected near thunderstorms in the evening.

Ridgetop.....Northwest 8 to 18 mph.

Mixing height.....13600 ft AGL in the evening...decreasing to 100 ft AGL overnight.

Transport winds.....Northwest 5 to 15 mph.

CWR.....10 percent.

## .SUNDAY...

Sky/weather.....Partly cloudy. Isolated rain showers and t-storms in the afternoon.

LAL.....2...1 to 8 strikes/15 min/cell.

Max temperature.....60-65 on the fire...75-80 at the valley floor.

Min humidity.....28-34 percent on the fire...19 to 25 percent on the valley floor.

Wind (20 ft).....

Slope/valley.....Northwest winds 5 to 15 mph with afternoon gust to 22mph on the fire...up slope/valley 5 to 15 mph at the valley floor. Gusty and erratic winds expected near thunderstorms in the afternoon.

Ridgetop.....Northwest 8 to 18 mph.

Mixing height.....100 ft AGL in the morning...increasing to 9900 ft AGL in the afternoon.

Transport winds.....North 5 to 15 mph.

Haines index.....3.

CWR.....5 percent.

*FIRE BEHAVIOR FORECAST*

<b>FORECAST NUMBER:</b> 1	<b>TYPE OF FIRE:</b> Wildfire
<b>FIRE NAME:</b> Bacon Rind	<b>OPERATIONAL PERIOD:</b> July 28, 2018
<b>DATE ISSUED:</b> July 27, 2018	<b>TIME ISSUED:</b> 1800
<b>UNIT:</b> MT-CGF	<b>SIGNED:</b> <i>by Todd Erdody,</i> Todd Erdody, LTAN (t)

**INPUTS**

**WEATHER SUMMARY:** (For full forecast refer to the Spot Forecast)

**Today:** Mostly sunny skies with 30% chance T-storms after noon. Max Temp: 64-69 degrees Min RH: 21-27%  
Afternoon 20 ft. Winds: Upslope/valley 5-10, Ridgetop: West 5 to 15 mph.  
Haines Index: 4

**Tonight:** Slight chance T-storms. Low Temp: 44-50 degrees Max RH: 75-80%  
Winds: North 3 to 6

**Sunday:** Mostly sunny skies with slight chance T-storms. Max Temp: 63-68 degrees  
Min RH: 25-30% Winds: North 7 to 10

**OUTPUTS**

**FIRE BEHAVIOR**

**GENERAL:**

Growth will be limited to torching with short range spotting and backing fire with low rates of spread. While temperatures and RH are moderating slightly today, there is still potential for growth through longer range spotting from thunderstorm outflow winds.

Mixed conifer (Fuel Models TU5 and TL4): ROS – 0 to 3 ch/hr, FL - 2 to 4 ft

100 hr Dead Fuel Moisture (Quadrant RAWS) – 11%

1000 hr Dead Fuel Moisture (Quadrant RAWS) – 14%

**SPECIFIC:** Not Applicable

**AIR OPERATIONS:** Not Applicable

**SAFETY**

Be cautious around fire-weakened trees and existing snags, especially with outflow winds from thunderstorms.

Fire behavior has been consistently low to moderate but don't be complacent with your situational awareness. Fire season has just begun.

ICS Form 204

1. BRANCH		2. DIVISION/GROUP		ASSIGNMENT LIST					
3. INCIDENT NAME Bacon Rind			4. OPERATIONAL PERIOD DATE <u>7/28/18</u> TIME <u>0600-2100</u>						
5. OPERATIONAL PERSONNEL									
OPERATIONS CHIEF		<u>Brown / Koscielniak</u>		DIVISION/GROUP SUPERVISOR		_____			
BRANCH DIRECTOR		_____		AIR TACTICAL GROUP SUPERVISOR		_____			
6. RESOURCES ASSIGNED TO THIS PERIOD									
STRIKE TEAM/TASK FORCE/ RESOURCE DESIGNATOR	EMT	LEADER	NUMBER PERSONS	TRANS. NEED	Last Day	PICKUP PT./TIME	DROP OFF PT./TIME		
Helena Regulars C-2		Kaiser/Boucher	21	N	8/3	0600	2100		
Custer Gallatin C-1		Ray/Zohner	20	N	8/3				
7. CONTROL OPERATIONS									
<p><b>Task:</b> Monitor fire progression and smoke impacts from Hwy 191. Implement holding actions as needed along Hwy 191. Continue implementing fuels reduction and structure protection plan on Black Butte Ranch.</p> <p><b>Purpose:</b> Provide for public and firefighter safety.</p> <p><b>End State:</b> Ensure efficient traffic flow on Hwy 191.</p>									
8. SPECIAL INSTRUCTIONS									
<ul style="list-style-type: none"> <li>- Coordinate actions with other operational resources and law enforcement as needed.</li> <li>- Monitor Management Action Points as necessary based on observed and modeled fire behavior to emphasize strategic planning and sound risk decision making.</li> <li>- If fire spots east of Hwy 191 suppress with resources on incident.</li> </ul>									
9. DIVISION/GROUP COMMUNICATIONS SUMMARY									
FUNCTION		FREQ.	SYSTEM	CHAN.	FUNCTION		FREQ.	SYSTEM	CHAN.
COMMAND	LOCAL				SUPPORT	LOCAL			
	REPEAT					REPEAT			
DIV./GROUP TACTICAL					GROUND TO AIR				
PREPARED BY (RESOURCE UNIT LEADER)				APPROVED BY (PLANNING SECT. CH.)			DATE	TIME	



<b>MEDICAL PLAN</b>	1. Incident Name	2. Date Prepared	3. Time Prepared	4. Operational Period
	Bacon Rind	07/27/18	1800	0600-2100

5. Incident Medical Aid Station

		Paramedics	
		Yes	No
West Yellowstone Clinic	406-646-9441	X	
	11 Electric St, West Yellowstone, MT 59758		

6. Transportation

A. Ambulance Services

Name	Address	Phone	Paramedics	
			Yes	No
West Yellowstone EMS	West Yellowstone	406-646-7600	X	
Air Evac		Call 911 or Dispatch		

B. Incident Ambulances

Name	Location	Paramedics	
		Yes	No

7. Hospitals

Name	Address	Travel Time		Phone	Helipad		Burn Center	
		Air	Ground		Yes	No	Yes	No
Big Sky hospital	Big Sky MT -- Level 2 trauma		45m	406-995-6995				
Bozeman Deaconess	Bozeman MT -- Level 2 trauma		90m	406-414-5000	X			
Salt Lake City burn center	Salt Lake City, Utah -- Level 1 trauma		5hr	Burn Center 801-581-3050 Emergency 801-581-2292	x		X	

8. Medical Emergency Procedures

In the event of a Medical Emergency contact your direct Supervisor for the day. They will contact you Division Supervisor/ Operations.  
 Division/ Operations will control scene or delegate the scene to someone qualified on scene.  
 They will determine the Medical need and prepare for evacuation.  
 (See Communication plan)

Prepared by (Medical Unit Leader)

10. Reviewed by (Safety Officer)



# MEDICAL PLAN (ICS 206 WF)

Controlled Unclassified Information//Basic

## Medical Incident Report

**FOR A NON-EMERGENCY INCIDENT, WORK THROUGH CHAIN OF COMMAND TO REPORT AND TRANSPORT INJURED PERSONNEL AS NECESSARY.**

**FOR A MEDICAL EMERGENCY: IDENTIFY ON SCENE INCIDENT COMMANDER BY NAME AND POSITION AND ANNOUNCE "MEDICAL EMERGENCY" TO INITIATE RESPONSE FROM IMT COMMUNICATIONS/DISPATCH.**

Use the following items to communicate situation to communications/dispatch.

**1. CONTACT COMMUNICATIONS / DISPATCH (Verify correct frequency prior to starting report)**

*Ex: "Communications, Div. Alpha. Stand-by for Emergency Traffic."*

**2. INCIDENT STATUS: Provide incident summary (including number of patients) and command structure.**

*Ex: "Communications, I have a Red priority patient, unconscious, struck by a falling tree. Requesting air ambulance to Forest Road 1 at (Lat./Long.) This will be the Trout Meadow Medical, IC is TFLD Jones. EMT Smith is providing medical care."*

Severity of Emergency / Transport Priority	<input type="checkbox"/> <b>RED / PRIORITY 1 Life or limb threatening injury or illness. Evacuation need is IMMEDIATE</b> <i>Ex: Unconscious, difficulty breathing, bleeding severely, 2° – 3° burns more than 4 palm sizes, heat stroke, disoriented.</i> <input type="checkbox"/> <b>YELLOW / PRIORITY 2 Serious Injury or illness. Evacuation may be DELAYED if necessary.</b> <i>Ex: Significant trauma, unable to walk, 2° – 3° burns not more than 1-3 palm sizes.</i> <input type="checkbox"/> <b>GREEN / PRIORITY 3 Minor Injury or illness. Non-Emergency transport</b> <i>Ex: Sprains, strains, minor heat-related illness.</i>	
Nature of Injury or Illness & Mechanism of Injury		Brief Summary of Injury or Illness <i>(Ex: Unconscious, Struck by Falling Tree)</i>
Transport Request		Air Ambulance / Short Haul/Hoist Ground Ambulance / Other
Patient Location		Descriptive Location & Lat. / Long. (WGS84)
Incident Name		Geographic Name + "Medical" <i>(Ex: Trout Meadow Medical)</i>
On-Scene Incident Commander		Name of on-scene IC of Incident within an Incident <i>(Ex: TFLD Jones)</i>
Patient Care		Name of Care Provider <i>(Ex: EMT Smith)</i>

**3. INITIAL PATIENT ASSESSMENT: Complete this section for each patient as applicable (start with the most severe patient)**

Patient Assessment: See IRPG page 106

Treatment:

**4. TRANSPORT PLAN:**

Evacuation Location (if different): *(Descriptive Location (drop point, intersection, etc.) or Lat. / Long.)* Patient's ETA to Evacuation Location:

Helispot / Extraction Site Size and Hazards:

**5. ADDITIONAL RESOURCES / EQUIPMENT NEEDS:**

*Example: Paramedic/EMT, Crews, Immobilization Devices, AED, Oxygen, Trauma Bag, IV/Fluid(s), Splints, Rope rescue, Wheeled litter, HAZMAT, Extrication*

**6. COMMUNICATIONS: Identify State Air/Ground EMS Frequencies and Hospital Contacts as applicable**

Function	Channel Name/Number	Receive (RX)	Tone/NAC *	Transmit (TX)	Tone/NAC *
COMMAND					
AIR-TO-GRND					
TACTICAL					

**7. CONTINGENCY: Considerations: If primary options fail, what actions can be implemented in conjunction with primary evacuation method? Be thinking ahead.**

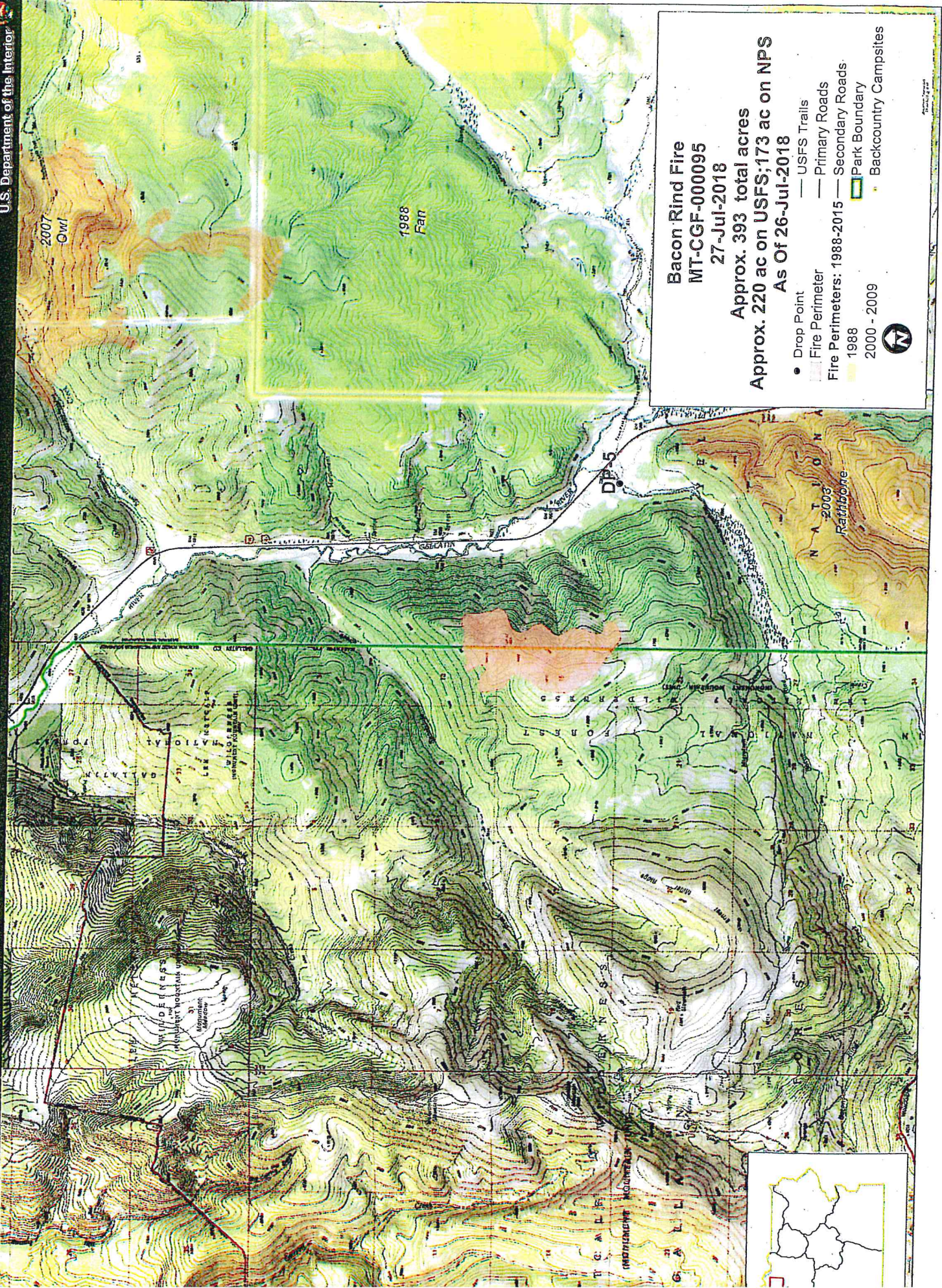
**8. ADDITIONAL INFORMATION: Updates/Changes, etc.**

**REMEMBER: Confirm ETA's of resources ordered. Act according to your level of training. Be Alert. Keep Calm. Think Clearly. Act Decisively.**

# Incident Communications Plan, ICS Form 205

INCIDENT RADIO COMMUNICATIONS PLAN		1. Incident Name <b>Bacon Rind</b>	2. Date/Time Prepared	3. Operational Period Date/Time <b>7/28/18</b>	
<b>4. Basic Radio Channel Utilization</b>					
System/Cache	Channel	Function	Frequency/Tone	Assignment	Remarks
	1	Command	RX 169.925 TX 169.925 131.8	All	Skyline
	2	Command	RX 169.925 TX 169.925 146.2	All	Cinnamon
	3	Tac	RX 167.6500 TX 167.6500	Primary Tac	FS Tac 1
	4	Tac	RX 163.71250 TX 163.71250	Alt Tac	Work 1
	5	Tac	RX 154.0700 TX 154.0700 156.7	Red	County Fire
	6	Air to Ground	RX 169.1500 TX 169.1500	A/G	
	7	Air to Ground	RX 167.7000 TX 167.7000	Alt A/G	
	8	Life Flight	RX 155.3400 TX 155.3400	Medical A/G	
	9	Air Guard	RX 168.6250 TX 168.6250	Air Guard	
<b>5. Prepared by (Communications Unit)</b>					

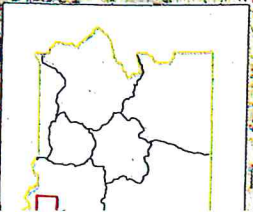
# Bacon Rind Fire



## Bacon Rind Fire MT-CGF-000095 27-Jul-2018

Approx. 393 total acres  
Approx. 220 ac on USFS; 173 ac on NPS  
As Of 26-Jul-2018

- Drop Point
- USFS Trails
- ▭ Fire Perimeter
- Primary Roads
- ▭ Fire Perimeters: 1988-2015
- Secondary Roads
- 1988
- 2000 - 2009
- ▭ Park Boundary
- Backcountry Campsites



# UNIT LOG

1. Incident Name	2. Date Prepared	3. Time Prepared
4. Unit Name/Designators	5. Unit Leader (Name and Position)	6. Operational Period

7. Personnel Roster Assigned

Name	ICS Position	Home Base

8. Activity Log

Time	Major Events

9. Prepared by (Name and Position)