

Bacon Rind Fire

PUBLIC

Incident Action Plan


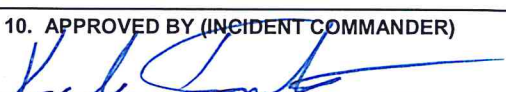
Friday August 10, 2018
Custer Gallatin National Forest



STOP. The cornerstone of safety is to take time to assess the job and its environment.

- S:** Step back and consider all aspects of the job. This includes yourself, your co-workers, equipment, vehicles, weather, terrain, etc.
- T:** Think about what you are about to do. This includes potential/real hazards, do my actions reflect my intent on emphasis on safety, etc.
- O:** Organize the job and co-workers to insure quality of task accomplishment. This diligent effort will achieve desired results in a “non-hurried” environment.
- P:** Proceed in a determined effort to accomplish given tasks in a safe manner. This means that all persons involved are consistently alert and keenly aware of being careful in all their actions.

ICS Form 202

INCIDENT OBJECTIVES	1. INCIDENT NAME Bacon Rind	2. DATE	3. TIME
4. OPERATIONAL PERIOD (DATE/TIME)			
5. GENERAL CONTROL OBJECTIVES FOR THE INCIDENT (INCLUDE ALTERNATIVES)			
<p>Leader's Intent: The highest priority will be focused on minimizing risk to firefighters and the public, by continually using the risk management process.</p> <p>It is the expectation that every person assigned in any type of leadership role does a risk assessment and provides the appropriate mitigation measures prior to engaging in any activity. If a hazard cannot be mitigated to an acceptable level, the issue will be elevated to the next level.</p> <p>Management Requirements:</p> <ul style="list-style-type: none"> - Ensure firefighter and public safety is the first priority in every operation. - Maintain and develop relationships with adjacent communities, agencies, cooperators, concessionaires and other stakeholders while providing timely and consistent information coordinated with the USFS. A common message will be communicated thru all channels. <p>Incident Objectives</p> <ol style="list-style-type: none"> 1. Minimize Impacts to identified values at risk, including Black Butte Ranch, Elkhorn Ranch, Highway 191, powerline corridors and trail infrastructure. 2. Balance resource value with suppression impacts; where and when appropriate, allow fire to play its natural role in the wilderness ecosystem as a process of ecological change. 3. Minimize impacts to natural and cultural resources, watersheds, and threatened and endangered species. Minimize suppression impacts in the Lee Metcalf Wilderness by allowing no mechanized equipment unless approved by the line officer. 4. Minimize potential bear/human interactions. All personnel assigned to the incident must comply with the Food Storage Special Order 36 CFR 261.58, in effect for the Greater Yellowstone Ecosystem (GYE). 			
6. WEATHER FORECAST FOR OPERATIONAL PERIOD		*See attached	
7. GENERAL SAFETY MESSAGE		*See attached	
<p>Primary risk factors are remote and isolated work areas requiring a functioning communication system and aviation hazards.</p> <p>One of the greatest incident risk is driving Hwy 191. Beware of your safety and public watching the fire.</p>			
8. Attachments (<input checked="" type="checkbox"/> if attached)			
<input type="checkbox"/> Organization List (ICS 203)	<input type="checkbox"/> Medical Plan (ICS 206)	<input type="checkbox"/> Weather Forecast	
<input type="checkbox"/> Assignment List (ICS 204)	<input type="checkbox"/> Incident Map	<input type="checkbox"/>	
<input type="checkbox"/> Communications Plan (ICS 205)	<input type="checkbox"/> Traffic Plan	<input type="checkbox"/>	
9. PREPARED BY (PLANNING SECTION CHIEF)		10. APPROVED BY (INCIDENT COMMANDER)	
			

Organization Assignment List, ICS Form 203

ORGANIZATION ASSIGNMENT LIST		1. INCIDENT NAME Bacon Rind	2. DATE PREPARED	3. TIME PREPARED
POSITION	NAME	4. OPERATIONAL PERIOD (DATE/TIME) 0700-2000		
5. INCIDENT COMMAND AND STAFF		9. OPERATIONS SECTION		
INCIDENT COMMANDER	Kyle Inabnit 8/19	CHIEF	Drew Brown 8/10	
DEPUTY ICT3t	Jeff Flick 8/17	DEPUTY t	Adrian (Adon) Hahn 8/17	
SAFETY OFFICER	Scott Wuebber 8/17	a. BRANCH I- DIVISION/GROUPS		
INFORMATION OFFICER	Marianne Baumberger Mike Johnson 8/10	BRANCH DIRECTOR		
LIAISON OFFICER	Molly Moore	DEPUTY		
6. AGENCY REPRESENTATIVES		DIVISION/GROUP		
AGENCY	NAME	DIVISION/ GROUP		
USFS	Jason Brey	DIVISION/ GROUP		
Gallatin Co.	Patrick Lonergan	DIVISION/GROUP		
Yellowstone NP	John Cataldo	DIVISION /GROUP		
7. PLANNING SECTION		b. BRANCH II- DIVISIONS/GROUPS		
CHIEF	Todd Opperman	BRANCH DIRECTOR		
DEPUTY		DEPUTY		
RESOURCES UNIT		DIVISION/GROUP		
SITUATION UNIT		DIVISION/GROUP		
DOCUMENTATION UNIT		DIVISION/GROUP		
DEMOBILIZATION UNIT		DIVISION/GROUP		
TECHNICAL SPECIALISTS		DIVISION/GROUP		
GISS	YELL GIS	c. BRANCH III- DIVISIONS/GROUPS		
LTant	Todd Erdody	BRANCH DIRECTOR		
REAF (USFS)	Randy Scarlett	DEPUTY		
REAF (NPS)		DIVISION/GROUP		
8. LOGISTICS SECTION		DIVISION/GROUP		
CHIEF	Loyd Kortge	d. AIR OPERATIONS BRANCH		
DEPUTY	Jerry Ryder	AIR OPERATIONS BR. DIR.		
LOG3	Norm Buhl	AIR TACTICAL GROUP SUP.		
a. SUPPORT BRANCH		AIR SUPPORT GROUP SUP.		
DIRECTOR		HELICOPTER COORDINATOR		
SUPPLY UNIT		AIR TANKER/FIXED WING CRD.		
FACILITIES UNIT	Rudy Schlegel	10. FINANCE/ADMINISTRATION SECTION		
GROUND SUPPORT UNIT		CHIEF	Fauzia Massey	
b. SERVICE BRANCH		IBA	Roger Gowan	
DIRECTOR		TIME UNIT	Lessie Sites	
COMMUNICATIONS UNIT		PROCUREMENT UNIT		
MEDICAL UNIT		COMPENSATION/CLAIMS UNIT		
FOOD UNIT		COST UNIT		
PREPARED BY (RESOURCES UNIT)				

Fire Weather Forecast



DISCUSSION...

RAWS Station at fire

...FIRE WEATHER WATCH IN EFFECT FROM SATURDAY AFTERNOON THROUGH SUNDAY EVENING...

High pressure will be over the fire through Saturday. It will be clear and dry over the fire Friday through Saturday. Highs will be in the mid 70s to lower 80s with relative humidities in the upper teens to lower 20s. Recoveries will be in the 40s Friday night. Winds will not be strong. Expect south winds 5 to 10 mph Friday and Friday night, with southwest winds 5 to 15 mph on Saturday. A cold front will cross the fire Saturday night bringing isolated showers and thunderstorms Sunday afternoon and southwest winds 15 to 20 mph. Southwest flow aloft will be over the fire Monday with high pressure building in on Tuesday. Expect southwest winds 5 to 10 mph Monday and Tuesday. Highs on Sunday through Tuesday will be cooler than Friday and Saturday.

.FRIDAY...

Sky/weather.....Sunny.

LAL.....1...no thunderstorms.

Max temperature.....76-81.

Min humidity.....17-22 percent.

Wind (20 ft).....

Slope/valley.....South winds 5 to 10 mph.

Ridgetop.....South 5 to 10 mph.

Mixing height.....100 ft AGL in the morning...increasing to 12600 ft AGL in the afternoon.

Transport winds.....Southeast 5 to 10 mph.

Haines index.....5.

CWR.....0 percent.

.FRIDAY NIGHT...

Sky/weather.....Clear.

LAL.....1...no thunderstorms.

Min temperature.....50-55.

Max humidity.....40-45 percent.

Wind (20 ft).....

Slope/valley.....South winds 5 to 10 mph.

Ridgetop.....Southwest 5 to 10 mph.

Mixing height.....12600 ft AGL in the evening...decreasing to 100 ft AGL overnight.

Transport winds.....South 5 to 10 mph.

CWR.....0 percent.

.SATURDAY...

Sky/weather.....Sunny.

LAL.....1...no thunderstorms.

Max temperature.....75-80.

Min humidity.....17-22 percent.

Wind (20 ft).....

Slope/valley.....Southwest winds 5 to 15 mph.

Ridgetop.....Southwest 10 to 20 mph.

Mixing height.....100 ft AGL in the morning...increasing to 12800 ft AGL in the afternoon.

Transport winds.....Southwest 5 to 15 mph.

Haines index.....6.

CWR.....0 percent.

.FORECAST DAYS 3 THROUGH 5...

.SUNDAY...Mostly clear. Isolated showers and thunderstorms. Lows 44 to 49. Highs 69 to 74. Southwest winds 15 to 20 mph.

.MONDAY...Mostly clear. Lows 43 to 48. Highs 68 to 73. Southwest winds 5 to 10 mph.

.TUESDAY...Mostly clear. Lows 43 to 48. Highs 68 to 73. Southwest winds 5 to 10 mph.

FIRE BEHAVIOR FORECAST

FORECAST NUMBER: 14	TYPE OF FIRE: Wildfire
FIRE NAME: Bacon Rind	OPERATIONAL PERIOD: August 10, 2018
DATE ISSUED: August 9, 2018	TIME ISSUED: 1800
UNIT: MT-CGF	SIGNED: /s/ Todd Erdody, Todd Erdody, LTAN (t)

INPUTS

WEATHER SUMMARY: (For full forecast refer to the Spot Forecast)

Today: Sunny. Max Temp: 76-81 degrees Min RH: 17-22%
Afternoon 20 ft. Winds: South 5-10 mph, Ridgetop: South 5 to 10 mph.
Haines Index: 5 (Moderate potential for large fire growth)

Tonight: Clear. Low Temp: 50-55 degrees Max RH: 40-45% Winds: Southwest 5 to 10 mph

Saturday: Sunny. Max Temp: 75-80 degrees Min RH: 17-22% Winds: Southwest 10 to 20 mph.

**OUTPUTS
FIRE BEHAVIOR**

GENERAL:

Fire activity has increased with lower fuel moistures and will continue to ramp up through Saturday. Group torching has become more frequent, with short range spotting (<0.2 mile). **With a Haines index of 5, keep up your situational awareness.** RH recovery tonight will be poor, which will lead to continued active torching and spotting overnight and will allow drying for increased active fire behavior on Friday.

Mixed conifer (Fuel Models TU5 and TL4): ROS – 0 to 6 ch/hr, FL - 0 to 6 ft

SPECIFIC: Not Applicable

AIR OPERATIONS: Not Applicable

SAFETY

Be cautious around fire-weakened trees and existing snags, especially with outflow winds from thunderstorms.

Stay hydrated!

ICS Form 204

1. BRANCH	2. DIVISION/GROUP	ASSIGNMENT LIST
-----------	-------------------	------------------------

3. INCIDENT NAME Bacon Rind	4. OPERATIONAL PERIOD DATE _____ TIME 0700-2000
--------------------------------	--

5. OPERATIONAL PERSONNEL			
OPERATIONS CHIEF	Brown / Hahn	DIVISION/GROUP SUPERVISOR	_____
BRANCH DIRECTOR	_____	AIR TACTICAL GROUP SUPERVISOR	_____

6. RESOURCES ASSIGNED TO THIS PERIOD

STRIKE TEAM/TASK FORCE/ RESOURCE DESIGNATOR	EMT	LEADER	NUMBER PERSONS	TRANS. NEED	Last Day	PICKUP PT./TIME	DROP OFF PT./TIME
Custer Gallatin C-1	2	Toole / Dillaway	21	N	8/18	0700	2000
E226 St. Regis E-15		Spencer	2	N	8/16	0700	2000
E6351 FWS E-18		Duerkop	3	N	8/16	0700	2000
E742 MNDNR E-19		Silgjord	3	N	8/16	0700	2000
TFLD		Jake Hoppe	1	N	8/23	0700	2000

7. CONTROL OPERATIONS

Task: Monitor fire progression and smoke impacts from Hwy 191. Implement holding actions as needed along Hwy 191. Continue implementing fuels projects and providing Lookouts.

Purpose: Provide for public and firefighter safety.

End State: Ensure efficient traffic flow on Hwy 191.

8. SPECIAL INSTRUCTIONS

- Coordinate actions with other operational resources and law enforcement as needed.
- Monitor Management Action Points as necessary based on observed and modeled fire behavior to emphasize strategic planning and sound risk decision making.
- If fire spots east of Hwy 191 suppress with resources on incident.

9. DIVISION/GROUP COMMUNICATIONS SUMMARY

FUNCTION	FREQ.	SYSTEM	CHAN.	FUNCTION	FREQ.	SYSTEM	CHAN.
COMMAND				SUPPORT			
LOCAL REPEAT				LOCAL REPEAT			
DIV./GROUP TACTICAL				GROUND TO AIR			

PREPARED BY (RESOURCE UNIT LEADER)	APPROVED BY (PLANNING SECT. CH.)	DATE	TIME
------------------------------------	----------------------------------	------	------

	<p style="color: red;">Link to NIFC FTP maps of Bacon Rind Fire</p>	
--	---	--

MEDICAL PLAN	1. Incident Name Bacon Rind	2. Date Prepared 08/05/18	3. Time Prepared 1130	4. Operational Period				
5. Incident Medical Aid Station								
						Paramedics Yes No		
West Yellowstone Clinic		406-646-9441			x			
11 Electric St, West Yellowstone, MT 59758								
6. Transportation								
A. Ambulance Services								
Name	Address		Phone		Paramedics Yes No			
West Yellowstone EMS	West Yellowstone		406-646-7600		X			
Air Evac			Call 911 or Dispatch					
B. Incident Ambulances								
Name	Location				Paramedics Yes No			
7. Hospitals								
Name	Address	Travel Time Air Ground		Phone	Helipad Yes No		Burn Center Yes No	
Big Sky hospital	334 Town Center Ave. Big Sky MT	20m	45m	406-995-6995	x		x	
Bozeman Deaconess	915 Highland Blvd. Bozeman MT Level 3 trauma	40m	90m	406-585-1000	X		x	
Salt Lake City burn center	Salt Lake City, Utah - Level 1 trauma		5hr	Burn Center 801-581-3050 Emergency 801-581-2292	x		X	
Eastern ID Regional Medical Center	3100 Channing Way Idaho Falls, ID	60m	2hr	208-529-6111	x		x	
8. Medical Emergency Procedures								
<ul style="list-style-type: none"> In the event of a Medical Emergency contact your direct Supervisor for the day. They will contact the Division Supervisor/ Operations. Division/ Operations will control scene or delegate the scene to someone qualified on scene. They will determine the Medical need and prepare for evacuation. (See Communication plan) 								
Prepared by (Medical Unit Leader)				10. Reviewed by (Safety Officer) Brian Wilson				

MEDICAL PLAN(ICS 206 WF)

Controlled Unclassified Information//Basic

Medical Incident Report					
FOR A NON-EMERGENCY INCIDENT, WORK THROUGH CHAIN OF COMMAND TO REPORT AND TRANSPORT INJURED PERSONNEL AS NECESSARY. FOR A MEDICAL EMERGENCY: IDENTIFY ON SCENE INCIDENT COMMANDER BY NAME AND POSITION AND ANNOUNCE "MEDICAL EMERGENCY" TO INITIATE RESPONSE FROM IMT COMMUNICATIONS/DISPATCH.					
Use the following items to communicate situation to communications/dispatch.					
1. CONTACT COMMUNICATIONS / DISPATCH (Verify correct frequency prior to starting report) <i>Ex: "Communications, Div. Alpha. Stand-by for Emergency Traffic."</i>					
2. INCIDENT STATUS: Provide incident summary (including number of patients) and command structure. <i>Ex: "Communications, I have a Red priority patient, unconscious, struck by a falling tree. Requesting air ambulance to Forest Road 1 at (Lat./Long.) This will be the Trout Meadow Medical, IC is TFLD Jones. EMT Smith is providing medical care."</i>					
Severity of Emergency / Transport Priority	<input type="checkbox"/> RED / PRIORITY 1 Life or limb threatening injury or illness. Evacuation need is IMMEDIATE <i>Ex: Unconscious, difficulty breathing, bleeding severely, 2° – 3° burns more than 4 palm sizes, heat stroke, disoriented.</i> <input type="checkbox"/> YELLOW / PRIORITY 2 Serious Injury or illness. Evacuation may be DELAYED if necessary. <i>Ex: Significant trauma, unable to walk, 2° – 3° burns not more than 1-3 palm sizes.</i> <input type="checkbox"/> GREEN / PRIORITY 3 Minor Injury or illness. Non-Emergency transport <i>Ex: Sprains, strains, minor heat-related illness.</i>				
Nature of Injury or Illness & Mechanism of Injury			<i>Brief Summary of Injury or Illness (Ex: Unconscious, Struck by Falling Tree)</i>		
Transport Request			<i>Air Ambulance / Short Haul/Hoist Ground Ambulance / Other</i>		
Patient Location			<i>Descriptive Location & Lat. / Long. (WGS84)</i>		
Incident Name			<i>Geographic Name + "Medical" (Ex: Trout Meadow Medical)</i>		
On-Scene Incident Commander			<i>Name of on-scene IC of Incident within an Incident (Ex: TFLD Jones)</i>		
Patient Care			<i>Name of Care Provider (Ex: EMT Smith)</i>		
3. INITIAL PATIENT ASSESSMENT: Complete this section for each patient as applicable (start with the most severe patient) Patient Assessment: See IRPG page 106					
Treatment:					
4. TRANSPORT PLAN: Evacuation Location (if different): (Descriptive Location (drop point, intersection, etc.) or Lat. / Long.) Patient's ETA to Evacuation Location:					
Helispot / Extraction Site Size and Hazards:					
5. ADDITIONAL RESOURCES / EQUIPMENT NEEDS: <i>Example: Paramedic/EMT, Crews, Immobilization Devices, AED, Oxygen, Trauma Bag, IV/Fluid(s), Splints, Rope.rescue, Wheeled litter, HAZMAT, Extrication</i>					
6. COMMUNICATIONS: Identify State Air/Ground EMS Frequencies and Hospital Contacts as applicable					
Function	Channel Name/Number	Receive (RX)	Tone/NAC *	Transmit (TX)	Tone/NAC *
COMMAND					
AIR-TO-GRND					
TACTICAL					
7. CONTINGENCY: Considerations: If primary options fail, what actions can be implemented in conjunction with primary evacuation method? Be thinking ahead.					
8. ADDITIONAL INFORMATION: Updates/Changes, etc.					
REMEMBER: Confirm ETA's of resources ordered. Act according to your level of training. Be Alert. Keep Calm. Think Clearly. Act Decisively.					

Fire Information



Key Messages for Fire Personnel —Bacon Rind Fire

July 29, 2018

Key messages

- 1) **Public and firefighter safety is our first priority.**
- 2) **Fire management decisions are based on many factors.**
- 3) **Wildland fire is an essential, natural process.**
- 4) **We all work together to manage wildland fire.**

Key messages and Supporting Points

- 1) **Public and firefighter safety is our first priority.**
 - a) No structure, or natural or cultural resource, is worth a human life.
 - b) When firefighters plan a tactic, the first question is always, "Can we do this safely?" If the answer is "no," they will take another direction.
- 2) **Fire management decisions are based on many factors.**
 - a) Not all fires are managed the same way.
 - b) Responding to a fire may include using multiple strategies. The response could range from monitoring a fire that is beneficial to the landscape to aggressively putting out a fire that threatens people, homes, important natural or cultural resources. Fire managers can also use a combination approach, actively suppressing part of the fire while monitoring other parts of the fire.
 - c) Decisions are based on safety for the public and firefighters, what is threatened by the fire (values at risk), weather forecast, fire behavior, and what the fire and land-use plans or objectives are for the area.
 - d) All human caused fires are aggressively put out.
- 3) **Wildland fire is an essential, natural process.**
 - a) Fire has shaped this landscape for thousands of years. In the greater Yellowstone ecosystem, fire is important for the survival of many plants and animals.
 - a. Fire releases and recycles nutrients tied up in vegetation, duff and organic soil layers.
 - b. Some plants and animals depend on fire for survival.
 - i. Fire stimulates some plants like ceanothus (snowbrush) and trees like lodgepole pine to release seeds and creates favorable sites for dormant seeds to grow.
 - ii. Fire stimulates some plants such as willow and aspen to grow new shoots from surviving roots or root crowns.
 - iii. Fire maintains age and species diversity in the forest, increasing the number of niches for wildlife species.
 - c. Fire reduces the fuel load so that future fires are not as intense.
- 4) **We all work together to manage wildland fire.**
 - a) Fire does not acknowledge jurisdictional boundaries
 - b) Local, state, tribal and federal firefighters all work together to keep the public safe and natural resources protected. Pooling our strengths, resources and experience improves our effectiveness and keeps costs down.

A lot of work is done to prepare protection plans for our values such as buildings and transportation routes. The word "evacuation" should only be mentioned if you expect people to immediately leave the area.

Current Fire Information on InciWeb:

<https://inciweb.nwcg.gov/incident/5992/>

Year-round Yellowstone National Park Road Conditions: 307-344-2117



InciWeb

Bacon Rind Fire
 MT-CGF-000095
 Operational Period:
 August 10, 2018

IAP Map
 Day Shift
 Approx. 551 ac.
 363 ac. USFS
 188 ac. NPS

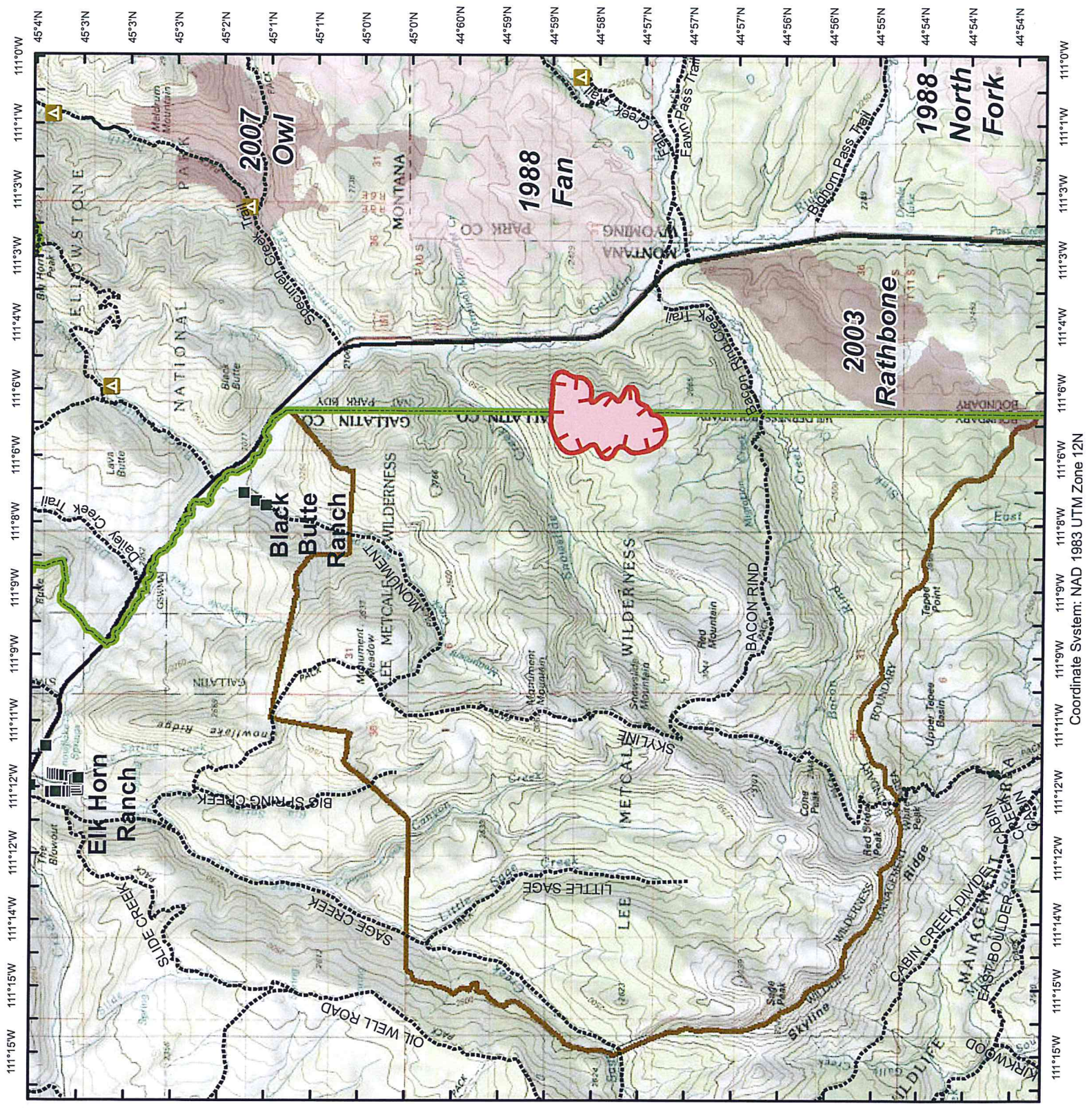
as of 08/09/2018 1339



- Backcountry Campsites
- Structure Locations
- Uncontrolled Fire Edge
- Wildfire Daily Fire Perimeter
- YNP Boundary
- Lee Metcalf Wilderness
- GYA Roads, Major



Prepared by: Howard Williams GIS
 Date: 8/9/2018 Time: 6:24:44 PM



Coordinate System: NAD 1983 UTM Zone 12N


Bacon Rind
 MT-CGF_000095
 August 10, 2018
 Transport Map
 Approx. 551 Acres
 as of 08/09/2018 1339
 NAD 1983 UTM Zone 12N

-  Incident Command Post
-  Uncontrolled Fire Edge
-  Wildfire Daily Fire Perimeter
-  Trails
-  GYA Highway Mileposts
-  YNP Boundary
-  Lee Metcalf Wilderness
-  GYA Roads, Major

