

PUBLIC

Bacon Rind Fire

Incident Action Plan

Saturday August 11, 2018
Custer Gallatin National Forest

Managing Vehicle Traffic in Smoke

Category:
Vehicles - Roads





Smoke has the potential to cause safety hazards to vehicle traffic in the vicinity of active fires (both wildfires and prescribed), especially at night. The following traffic-related items should be considered and addressed in local unit planning documents prior to an incident/project.

- Identification, location, and phone numbers of local units that have law enforcement and traffic control responsibilities in the smoke-impacted areas. Review any local agreements with these agencies presently in place.
- Identification of important, public roads that may be impacted by smoke.
- Identification of adequate equipment and trained personnel to control traffic. This may include warning signs, communications equipment (preferably not using the active fire frequency) and vehicles equipped with warning or flashing lights.
- Identification and phone numbers of radio and television stations that can issue traffic advisories for the smoke-impacted area.
- Identification of alternative traffic routes as part of the incident/project traffic plan.
- Identification of traffic routes subject to temperature inversions as well as contributory factors such as fog and ice.
- When potential smoke-related problems are identified:
 - Advise the Incident Commander, Burn Boss, or Agency Administrator that severe smoke exists.
 - Notify local law enforcement units and highway departments of a potential problem.
 - Implement preplanned actions such as posting smoke warning signs.
 - Ensure that proper equipment is ready, and appropriate personnel are briefed on contingency plans and are available to control traffic.

MT-CGF-000095 P1L06418 (0111)

Cost Center: PPIMIMRO2D WBS: PF.FSL064018.00.1

ICS Form 202

INCIDENT OBJECTIVES	1. INCIDENT NAME Bacon Rind	2. DATE	3. TIME
4. OPERATIONAL PERIOD (DATE/TIME)			
5. GENERAL CONTROL OBJECTIVES FOR THE INCIDENT (INCLUDE ALTERNATIVES)			
<p>Leader's Intent: The highest priority will be focused on minimizing risk to firefighters and the public, by continually using the risk management process.</p> <p>It is the expectation that every person assigned in any type of leadership role does a risk assessment and provides the appropriate mitigation measures prior to engaging in any activity. If a hazard cannot be mitigated to an acceptable level, the issue will be elevated to the next level.</p> <p>Management Requirements:</p> <ul style="list-style-type: none"> - Ensure firefighter and public safety is the first priority in every operation. - Maintain and develop relationships with adjacent communities, agencies, cooperators, concessionaires and other stakeholders while providing timely and consistent information coordinated with the USFS. A common message will be communicated thru all channels. <p>Incident Objectives</p> <ol style="list-style-type: none"> 1. Minimize Impacts to identified values at risk, including Black Butte Ranch, Elkhorn Ranch, Highway 191, powerline corridors and trail infrastructure. 2. Balance resource value with suppression impacts; where and when appropriate, allow fire to play its natural role in the wilderness ecosystem as a process of ecological change. 3. Minimize impacts to natural and cultural resources, watersheds, and threatened and endangered species. Minimize suppression impacts in the Lee Metcalf Wilderness by allowing no mechanized equipment unless approved by the line officer. 4. Minimize potential bear/human interactions. All personnel assigned to the incident must comply with the Food Storage Special Order 36 CFR 261.58, in effect for the Greater Yellowstone Ecosystem (GYE). 			
6. WEATHER FORECAST FOR OPERATIONAL PERIOD		*See attached	
7. GENERAL SAFETY MESSAGE		*See attached	
<p>Primary risk factors are remote and isolated work areas requiring a functioning communication system and aviation hazards.</p> <p>One of the greatest incident risk is driving Hwy 191. Beware of your safety and public watching the fire.</p>			
8. Attachments (<input checked="" type="checkbox"/> if attached)			
<input type="checkbox"/> Organization List (ICS 203)	<input type="checkbox"/> Medical Plan (ICS 206)	<input type="checkbox"/> Weather Forecast	
<input type="checkbox"/> Assignment List (ICS 204)	<input type="checkbox"/> Incident Map	<input type="checkbox"/> _____	
<input type="checkbox"/> Communications Plan (ICS 205)	<input type="checkbox"/> Traffic Plan	<input type="checkbox"/> _____	
9. PREPARED BY (PLANNING SECTION CHIEF)		10. APPROVED BY (INCIDENT COMMANDER)	
			

Organization Assignment List, ICS Form 203

ORGANIZATION ASSIGNMENT LIST		1. INCIDENT NAME Bacon Rind	2. DATE PREPARED	3. TIME PREPARED
POSITION	NAME	4. OPERATIONAL PERIOD (DATE/TIME) 0700-2000		
5. INCIDENT COMMAND AND STAFF		9. OPERATIONS SECTION		
INCIDENT COMMANDER	Kyle Inabnit 8/19	CHIEF	Jay Fassett	
DEPUTY ICT3t	Jeff Flick 8/17	DEPUTY t	Adrian (Adon) Hahn 8/17	
SAFETY OFFICER	Scott Wuebber 8/17	a. BRANCH I- DIVISION/GROUPS		
INFORMATION OFFICER	Marianne Baumberger Scott Babinowick	BRANCH DIRECTOR		
LIAISON OFFICER	Molly Moore	DEPUTY		
6. AGENCY REPRESENTATIVES		DIVISION/GROUP		
AGENCY	NAME	DIVISION/ GROUP		
USFS	Jason Brey	DIVISION/ GROUP		
Gallatin Co.	Patrick Lonergan	DIVISION/GROUP		
Yellowstone NP	John Cataldo	DIVISION /GROUP		
7. PLANNING SECTION		b. BRANCH II- DIVISIONS/GROUPS		
CHIEF	Todd Opperman	BRANCH DIRECTOR		
DEPUTY		DEPUTY		
RESOURCES UNIT		DIVISION/GROUP		
SITUATION UNIT		DIVISION/GROUP		
DOCUMENTATION UNIT		DIVISION/GROUP		
DEMOBILIZATION UNIT		DIVISION/GROUP		
TECHNICAL SPECIALISTS		DIVISION/GROUP		
GISS	YELL GIS	c. BRANCH III- DIVISIONS/GROUPS		
LTant	Todd Erdody	BRANCH DIRECTOR		
REAF (USFS)	Randy Scarlett	DEPUTY		
REAF (NPS)		DIVISION/GROUP		
8. LOGISTICS SECTION		DIVISION/GROUP		
CHIEF	Loyd Kortge	d. AIR OPERATIONS BRANCH		
DEPUTY	Jerry Ryder	AIR OPERATIONS BR. DIR.		
LOG3	Norm Buhl	AIR TACTICAL GROUP SUP.		
a. SUPPORT BRANCH		AIR SUPPORT GROUP SUP.		
DIRECTOR		HELICOPTER COORDINATOR		
SUPPLY UNIT		AIR TANKER/FIXED WING CRD.		
FACILITIES UNIT	Rudy Schlegel	10. FINANCE/ADMINISTRATION SECTION		
GROUND SUPPORT UNIT		CHIEF	Fauzia Massey	
b. SERVICE BRANCH		IBA	Roger Gowan	
DIRECTOR		TIME UNIT	Lessie Sites	
COMMUNICATIONS UNIT		PROCUREMENT UNIT		
MEDICAL UNIT		COMPENSATION/CLAIMS UNIT		
FOOD UNIT		COST UNIT		
PREPARED BY (RESOURCES UNIT)				

Fire Weather Forecast



DISCUSSION...

RAWS Station at fire

...FIRE WEATHER WATCH IN EFFECT FROM SATURDAY AFTERNOON THROUGH SUNDAY EVENING...

Saturday will be very warm and dry ahead of a cold front with relative humidities in the teens. There will be isolated dry afternoon thunderstorms with possible gusty winds. Winds will be southwest 5 to 10 mph. A cold front will cross the fire Saturday night with isolated dry thunderstorms in the evening. The storms may contain gusty winds. Humidities will recover into the 40s and winds will be southwest 5 to 10 mph becoming south overnight. Cooler air will push into the area on Sunday with humidities in the 20s. Winds will be southwest 5 to 15 mph. Weak high pressure will bring mostly clear skies to the fire Monday through Wednesday with highs in the upper 60s to low 70s. Winds will be northwest 5 to 10 mph on Monday, then southwest 5 to 10 mph Tuesday and Wednesday.

.SATURDAY...

Sky/weather.....Sunny. Isolated dry thunderstorms in the afternoon. Some thunderstorms may produce gusty winds in the pm.
LAL.....2...1 to 8 strikes/15 min/cell.
Max temperature.....78-83.
Min humidity.....13-18 percent.
Wind (20 ft)..... Slope/valley..Southwest winds 5 to 10 mph. Gusty and erratic winds expected near thunderstorms in the afternoon.
Ridgetop.....Southwest 10 to 20 mph.
Mixing height.....100 ft AGL in the morning...increasing to 15300 ft AGL in the afternoon.
Transport winds.....South 5 to 15 mph.
Haines index.....6.
CWR.....0 percent.

.SATURDAY NIGHT...

Mostly clear. Isolated dry thunderstorms in the evening. Some thunderstorms may produce gusty winds in the evening.
LAL.....2...1 to 8 strikes/15 min/cell.
Min temperature.....48-53.
Max humidity.....44-49 percent.
Wind (20 ft)...Slope/valley..Southwest winds 5 to 10 mph becoming south overnight. Gusty and erratic winds expected near thunderstorms in the evening.
Ridgetop.....West 10 to 20 mph.
Mixing height.....15300 ft AGL in the evening...decreasing to 100 ft AGL overnight.
Transport winds.....South 5 to 15 mph.
CWR.....0 percent.

.SUNDAY...

Sky/weather.....Mostly sunny.
LAL.....1...no thunderstorms.
Max temperature.....71-76.
Min humidity.....24-29 percent.
Wind (20 ft).....
Slope/valley.....Southwest winds 5 to 15 mph.
Ridgetop.....Southwest 15 to 25 mph.
Mixing height.....100 ft AGL in the morning...increasing to 12900 ft AGL in the afternoon.
Transport winds.....South 5 to 15 mph.
Haines index.....5.
CWR.....0 percent.

.FORECAST DAYS 3 THROUGH 5...

.MONDAY... Mostly clear. Lows 43 to 48. Highs 67 to 72. Northwest winds 5 to 10 mph.
.TUESDAY...Partly cloudy. Lows 45 to 50. Highs 67 to 72. Southwest winds 5 to 10 mph.
.WEDNESDAY...Mostly clear. Lows 43 to 48. Highs 67 to 72. Southwest winds 5 to 10 mph.

FIRE BEHAVIOR FORECAST

FORECAST NUMBER: 15

TYPE OF FIRE: Wildfire

FIRE NAME: Bacon Rind

OPERATIONAL PERIOD: August 11, 2018

DATE ISSUED: August 10, 2018

TIME ISSUED: 1800

UNIT: MT-CGF

SIGNED: *1st Todd Erdody,* Todd Erdody, LTAN (t)

INPUTS

WEATHER SUMMARY: (For full forecast refer to the Spot Forecast)

Today: Sunny with isolated dry thunderstorms in the afternoon. Max Temp: 78-83 degrees Min RH: 13-18%

Afternoon 20 ft. Winds: Southwest 5-10 mph, Ridgetop: Southwest 10 to 20 mph. **Haines Index: 6 (High potential for large fire growth)**

Tonight: Mostly clear with isolated dry thunderstorms in the evening. Low Temp: 48-53 degrees Max RH: 44-49% Winds: Southwest 5 to 20 mph

Sunday: Mostly sunny. Max Temp: 71-76 degrees Min RH: 24-29% Winds: Southwest 10 to 20 mph.

OUTPUTS

FIRE BEHAVIOR

GENERAL:

Group torching has become more frequent, with short range spotting (<0.2 mile). Spotting up to 0.4 miles is possible with higher wind speeds. **With a Haines index of 6, keep up your situational awareness.** The cold frontal passage tonight will lead to continued active torching and spotting, although moderate humidity recovery will dampen fire activity.

Mixed conifer (Fuel Models TU5 and TL4): ROS – 0 to 8 ch/hr, FL - 0 to 10 ft

SPECIFIC:

North side of fire: If fire in upper snowslide drainage becomes aligned with the wind, spot fires could become established further downslope and to the northeast, closer to Highway 191. However, wetter fuels at lower elevations could limit fire activity.


AIR OPERATIONS: Not Applicable

SAFETY

Be cautious around fire-weakened trees and existing snags, especially with outflow winds from thunderstorms.

Stay hydrated!

ICS Form 204

1. BRANCH		2. DIVISION/GROUP		ASSIGNMENT LIST					
3. INCIDENT NAME Bacon Rind			4. OPERATIONAL PERIOD DATE _____ TIME <u>0700-2000</u>						
5. OPERATIONAL PERSONNEL									
OPERATIONS CHIEF		<u>Fassett / Hahn</u>		DIVISION/GROUP SUPERVISOR		_____			
BRANCH DIRECTOR		_____		AIR TACTICAL GROUP SUPERVISOR		_____			
6. RESOURCES ASSIGNED TO THIS PERIOD									
STRIKE TEAM/TASK FORCE/ RESOURCE DESIGNATOR	EMT	LEADER	NUMBER PERSONS	TRANS. NEED	Last Day	PICKUP PT./TIME	DROP OFF PT./TIME		
Custer Gallatin C-1	2	Toole / Dillaway	21	N	8/18	0700	2000		
E226 St. Regis E-15		Spencer	2	N	8/16	0700	2000		
E6351 FWS E-18		Duerkop	3	N	8/16	0700	2000		
E742 MNDNR E-19		Silgjord	3	N	8/16	0700	2000		
TFLD		Jake Hoppe	1	N	8/23	0700	2000		
7. CONTROL OPERATIONS									
<p>Task: Monitor fire progression and smoke impacts from Hwy 191. Implement holding actions as needed along Hwy 191. Continue implementing fuels projects and providing Lookouts.</p> <p>Purpose: Provide for public and firefighter safety.</p> <p>End State: Ensure efficient traffic flow on Hwy 191.</p>									
8. SPECIAL INSTRUCTIONS									
<ul style="list-style-type: none"> - Coordinate actions with other operational resources and law enforcement as needed. - Monitor Management Action Points as necessary based on observed and modeled fire behavior to emphasize strategic planning and sound risk decision making. - If fire spots east of Hwy 191 suppress with resources on incident. 									
9. DIVISION/GROUP COMMUNICATIONS SUMMARY									
FUNCTION		FREQ.	SYSTEM	CHAN.	FUNCTION		FREQ.	SYSTEM	CHAN.
COMMAND	LOCAL				SUPPORT	LOCAL			
	REPEAT					REPEAT			
DIV./GROUP TACTICAL				GROUND TO AIR					
PREPARED BY (RESOURCE UNIT LEADER)				APPROVED BY (PLANNING SECT. CH.)			DATE	TIME	
 <p style="color: red; text-align: center;">Link to NIFC FTP maps of Bacon Rind Fire</p>							DATE	TIME	
							DATE	TIME	

MEDICAL PLAN	1. Incident Name Bacon Rind	2. Date Prepared 08/05/18	3. Time Prepared 1130	4. Operational Period						
5. Incident Medical Aid Station										
					Paramedics Yes No					
West Yellowstone Clinic			406-646-9441		x					
			11 Electric St, West Yellowstone, MT 59758							
6. Transportation										
A. Ambulance Services										
Name	Address		Phone		Paramedics Yes No					
West Yellowstone EMS	West Yellowstone		406-646-7600		X					
Air Evac			Call 911 or Dispatch							
B. Incident Ambulances										
Name	Location				Paramedics Yes No					
7. Hospitals										
Name	Address		Travel Time Air Ground		Phone		Helipad Yes No		Burn Center Yes No	
Big Sky hospital	334 Town Center Ave. Big Sky MT		20m 45m		406-995-6995		x		x	
Bozeman Deaconess	915 Highland Blvd. Bozeman MT Level 3 trauma		40m 90m		406-585-1000		X		x	
Salt Lake City burn center	Salt Lake City, Utah - Level 1 trauma		5hr		Burn Center 801-581-3050 Emergency 801-581-2292		x		X	
Eastern ID Regional Medical Center	3100 Channing Way Idaho Falls, ID		60m 2hr		208-529-6111		x		x	
8. Medical Emergency Procedures										
<ul style="list-style-type: none"> In the event of a Medical Emergency contact your direct Supervisor for the day. They will contact the Division Supervisor/ Operations. Division/ Operations will control scene or delegate the scene to someone qualified on scene. They will determine the Medical need and prepare for evacuation. (See Communication plan) 										
Prepared by (Medical Unit Leader)					10. Reviewed by (Safety Officer) Brian Wilson					

MEDICAL PLAN(ICS 206 WF)

Controlled Unclassified Information//Basic

Medical Incident Report

FOR A NON-EMERGENCY INCIDENT, WORK THROUGH CHAIN OF COMMAND TO REPORT AND TRANSPORT INJURED PERSONNEL AS NECESSARY.

FOR A MEDICAL EMERGENCY: IDENTIFY ON SCENE INCIDENT COMMANDER BY NAME AND POSITION AND ANNOUNCE "MEDICAL EMERGENCY" TO INITIATE RESPONSE FROM IMT COMMUNICATIONS/DISPATCH.

Use the following items to communicate situation to communications/dispatch.

1. CONTACT COMMUNICATIONS / DISPATCH (Verify correct frequency prior to starting report)

Ex: "Communications, Div. Alpha. Stand-by for Emergency Traffic."

2. INCIDENT STATUS: Provide incident summary (including number of patients) and command structure.

Ex: "Communications, I have a Red priority patient, unconscious, struck by a falling tree. Requesting air ambulance to Forest Road 1 at (Lat./Long.) This will be the Trout Meadow Medical, IC is TFLD Jones. EMT Smith is providing medical care."

Severity of Emergency / Transport Priority	<input type="checkbox"/> RED / PRIORITY 1 Life or limb threatening injury or illness. Evacuation need is IMMEDIATE <i>Ex: Unconscious, difficulty breathing, bleeding severely, 2° - 3° burns more than 4 palm sizes, heat stroke, disoriented.</i> <input type="checkbox"/> YELLOW / PRIORITY 2 Serious Injury or illness. Evacuation may be DELAYED if necessary. <i>Ex: Significant trauma, unable to walk, 2° - 3° burns not more than 1-3 palm sizes.</i> <input type="checkbox"/> GREEN / PRIORITY 3 Minor Injury or illness. Non-Emergency transport <i>Ex: Sprains, strains, minor heat-related illness.</i>	
Nature of Injury or Illness & Mechanism of Injury		Brief Summary of Injury or Illness <i>(Ex: Unconscious, Struck by Falling Tree)</i>
Transport Request		Air Ambulance / Short Haul/Hoist Ground Ambulance / Other
Patient Location		Descriptive Location & Lat. / Long. (WGS84)
Incident Name		Geographic Name + "Medical" <i>(Ex: Trout Meadow Medical)</i>
On-Scene Incident Commander		Name of on-scene IC of Incident within an Incident <i>(Ex: TFLD Jones)</i>
Patient Care		Name of Care Provider <i>(Ex: EMT Smith)</i>

3. INITIAL PATIENT ASSESSMENT: Complete this section for each patient as applicable (start with the most severe patient)

Patient Assessment: See IRPG page 106

Treatment:

4. TRANSPORT PLAN:

Evacuation Location (if different): (Descriptive Location (drop point, intersection, etc.) or Lat. / Long.) Patient's ETA to Evacuation Location:

Helispot / Extraction Site Size and Hazards:

5. ADDITIONAL RESOURCES / EQUIPMENT NEEDS:

Example: Paramedic/EMT, Crews, Immobilization Devices, AED, Oxygen, Trauma Bag, IV/Fluid(s), Splints, Rope rescue, Wheeled litter, HAZMAT, Extrication

6. COMMUNICATIONS: Identify State Air/Ground EMS Frequencies and Hospital Contacts as applicable

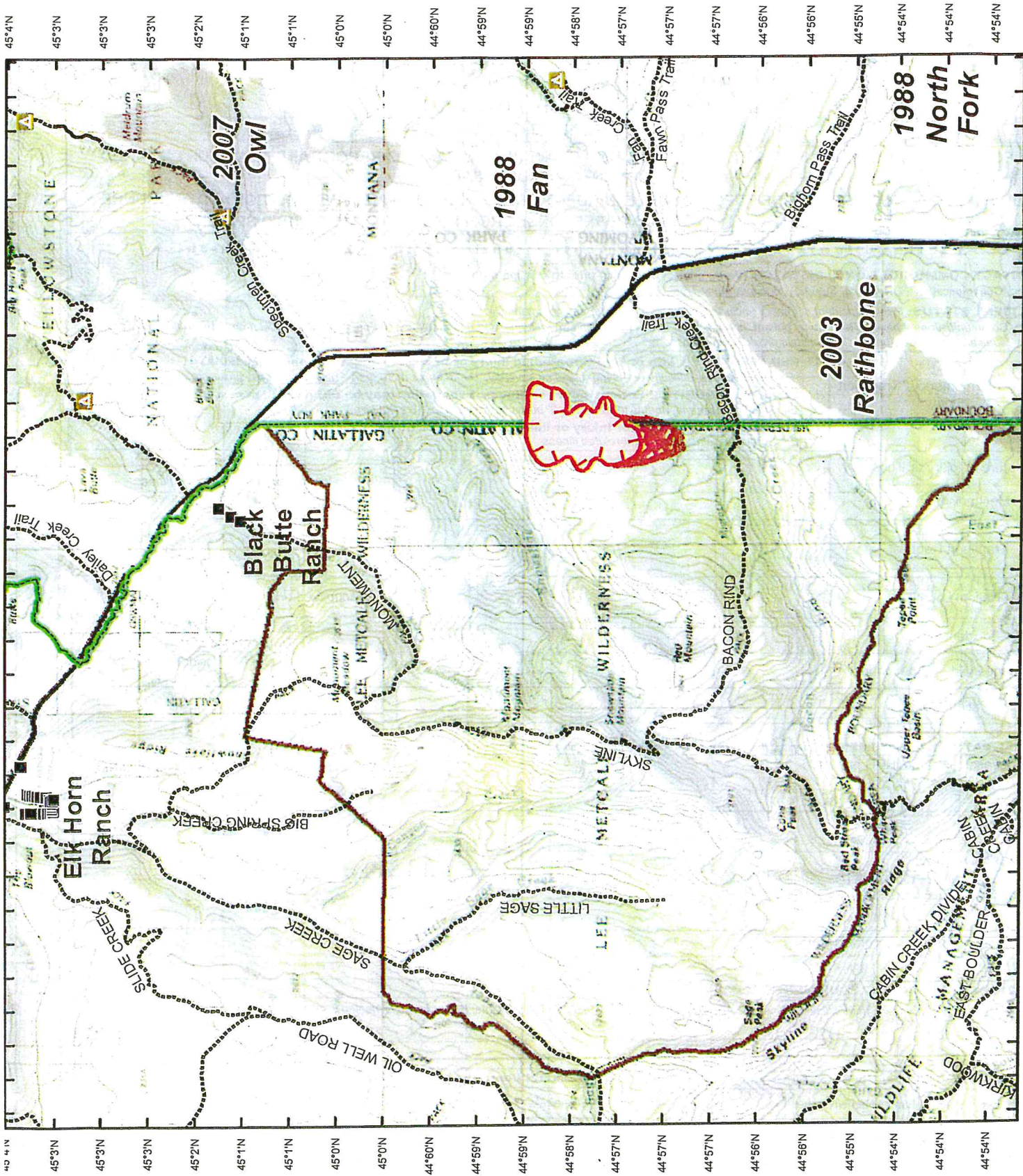
Function	Channel Name/Number	Receive (RX)	Tone/NAC *	Transmit (TX)	Tone/NAC *
COMMAND					
AIR-TO-GRND					
TACTICAL					

7. CONTINGENCY: Considerations: If primary options fail, what actions can be implemented in conjunction with primary evacuation method? Be thinking ahead.

8. ADDITIONAL INFORMATION: Updates/Changes, etc.

REMEMBER: Confirm ETA's of resources ordered. Act according to your level of training. Be Alert. Keep Calm. Think Clearly. Act Decisively.

Bacon Rind Fire
 MT-CGF-000095
 August 11, 2018
 IAP Map
 Day Shift
 Approx. 721 ac
 509 ac. USFS
 212 ac. NPS
 As of 08/10/2018 0930



- Backcountry Campsites
- Structure Locations
- Uncontrolled Fire Edge
- Wildfire Daily Fire Perimeter
- YNP Boundary
- Lee Metcalfe Wilderness
- GYA Roads, Major



Prepared by: Howard Williams GIS
 Date: 8/9/2018 Time: 6:24:44 PM

Coordinate System: NAD 1983 UTM Zone 12N