

# Bacon Rind Fire

## Incident Action Plan

Monday August 13, 2018  
Custer Gallatin National Forest



### MAJOR HAZARDS AND RISKS

Traffic / Driving	Complacency
Chainsaw / Felling	Bear encounters

### **Hazardous Attitudes That Can Lead to Complacency**

- |  |  |
|--|--|
| <ul style="list-style-type: none"> <li>• Invulnerable – Can't happen to us</li> <li>• Anti-Authority – Disregard of the team effort</li> <li>• Impulsive – Do something even if it's wrong</li> <li>• Macho – Trying to impress or prove something.</li> </ul> | <ul style="list-style-type: none"> <li>• Complacent – Just another day – Just another fire</li> <li>• Resigned – We can't make a difference</li> <li>• Group Think – Afraid to speak up or disagree</li> </ul> |
|--|--|

### **Attributes That Guard Against Complacency**

- |   |  |
|---|--|
| <p>Be proficient in your job, both technically and as a leader<br/>Keep busy! Be determined to finish the job you came here to do<br/>Take charge when in charge<br/>Adhere to professional standard operating procedures</p> | <ul style="list-style-type: none"> <li>• Continually Practice Situational Awareness</li> <li>• Put the safety of your subordinates above all other objectives</li> <li>• Provide accurate and timely briefings</li> <li>• Continually make yourself available and visible to subordinates</li> </ul> |
|---|--|

**ICS Form 202**

<b>INCIDENT OBJECTIVES</b>	1. INCIDENT NAME Bacon Rind	2. DATE 8/13/2018	3. TIME 0700												
4. OPERATIONAL PERIOD (DATE/TIME)															
<p>5. GENERAL CONTROL OBJECTIVES FOR THE INCIDENT (INCLUDE ALTERNATIVES)</p> <p><b>Leader's Intent:</b> The highest priority will be focused on minimizing risk to firefighters and the public, by continually using the risk management process.</p> <p>It is the expectation that every person assigned in any type of leadership role does a risk assessment and provides the appropriate mitigation measures prior to engaging in any activity. If a hazard cannot be mitigated to an acceptable level, the issue will be elevated to the next level.</p> <p><b>Management Requirements:</b></p> <ul style="list-style-type: none"> <li>- Ensure firefighter and public safety is the first priority in every operation.</li> <li>- Maintain and develop relationships with adjacent communities, agencies, cooperators, concessionaires and other stakeholders while providing timely and consistent information coordinated with the USFS. A common message will be communicated thru all channels.</li> </ul> <p><b>Incident Objectives</b></p> <ol style="list-style-type: none"> <li>1. Minimize Impacts to identified values at risk, including Black Butte Ranch, Elkhorn Ranch, Highway 191, powerline corridors and trail infrastructure.</li> <li>2. Balance resource value with suppression impacts; where and when appropriate, allow fire to play its natural role in the wilderness ecosystem as a process of ecological change.</li> <li>3. Minimize impacts to natural and cultural resources, watersheds, and threatened and endangered species. Minimize suppression impacts in the Lee Metcalf Wilderness by allowing no mechanized equipment unless approved by the line officer.</li> <li>4. Minimize potential bear/human interactions. All personnel assigned to the incident must comply with the Food Storage Special Order 36 CFR 261.58, in effect for the Greater Yellowstone Ecosystem (GYE).</li> </ol>															
6. WEATHER FORECAST FOR OPERATIONAL PERIOD		*See attached													
7. GENERAL SAFETY MESSAGE		*See attached													
<p>Primary risk factors are remote and isolated work areas requiring a functioning communication system and aviation hazards.</p> <p>One of the greatest incident risk is driving Hwy 191. Beware of your safety and public watching the fire.</p> <p>8. Attachments (X if attached)</p> <table border="0" style="width: 100%;"> <tr> <td>X Organization List (ICS 203)</td> <td>X Medical Plan (ICS 206)</td> <td>X</td> <td>Fire Weather Forecast</td> </tr> <tr> <td>X Assignment List (ICS 204)</td> <td>X Incident Map</td> <td>X</td> <td>Fire Behavior Forecast</td> </tr> <tr> <td>X Communications Plan (ICS 205)</td> <td>X Air Ops (ICS 220)</td> <td>X</td> <td>Fire Information Message</td> </tr> </table>				X Organization List (ICS 203)	X Medical Plan (ICS 206)	X	Fire Weather Forecast	X Assignment List (ICS 204)	X Incident Map	X	Fire Behavior Forecast	X Communications Plan (ICS 205)	X Air Ops (ICS 220)	X	Fire Information Message
X Organization List (ICS 203)	X Medical Plan (ICS 206)	X	Fire Weather Forecast												
X Assignment List (ICS 204)	X Incident Map	X	Fire Behavior Forecast												
X Communications Plan (ICS 205)	X Air Ops (ICS 220)	X	Fire Information Message												
9. PREPARED BY (PLANNING SECTION CHIEF) B. Smith		10. APPROVED BY (INCIDENT COMMANDER)													

## Organization Assignment List, ICS Form 203

<b>ORGANIZATION ASSIGNMENT LIST</b>			1. INCIDENT NAME Bacon Rind	2. DATE PREPARED 8/12/2018	3. TIME PREPARED 1900
POSITION	NAME	DAY 14	<b>4. OPERATIONAL PERIOD (DATE/TIME)</b> <b>8/13/2018; 0700-2000</b>		
<b>5. INCIDENT COMMAND AND STAFF</b>			<b>9. OPERATIONS SECTION</b>		
INCIDENT COMMANDER	Kyle Inabnit	8/19	CHIEF	Steve Smith	
DEPUTY ICT3t	Jeff Flick	8/17	DEPUTY t	Adrian (Adon) Hahn 8/17	
SAFETY OFFICER	Scott Wuebber	8/18	a. BRANCH I- DIVISION/GROUPS		
INFORMATION OFFICER	Marianne Baumberger		BRANCH DIRECTOR		
INFORMATION OFFICER	Scott Babinowick		DEPUTY		
INFORMATION OFFICER	Jeff Gildehaus		DIVISION/GROUP		
LIAISON OFFICER	Molly Moore		DIVISION/ GROUP		
<b>6. AGENCY REPRESENTATIVES</b>			DIVISION/ GROUP		
<b>AGENCY</b>	<b>NAME</b>		DIVISION/ GROUP		
USFS	Jason Brey		DIVISION/GROUP		
Gallatin Co.	Patrick Lonergan		DIVISION /GROUP		
Yellowstone NP	John Cataldo		b. BRANCH II- DIVISIONS/GROUPS		
			BRANCH DIRECTOR		
			DEPUTY		
			DIVISION/GROUP		
			DIVISION/GROUP		
			DIVISION/GROUP		
<b>7. PLANNING SECTION</b>			DIVISION /GROUP		
CHIEF	Becky Smith		c. BRANCH III- DIVISIONS/GROUPS		
RESOURCES UNIT			BRANCH DIRECTOR		
SITUATION UNIT			DEPUTY		
DOCUMENTATION UNIT			DIVISION/GROUP		
DEMOBILIZATION UNIT			DIVISION/GROUP		
GISS	YELL GIS		DIVISION/GROUP		
LTANT			DIVISION/GROUP		
REAF (USFS)	Randy Scarlett		d. AIR OPERATIONS BRANCH		
REAF (NPS)			AIR OPERATIONS BR. DIR.		
<b>8. LOGISTICS SECTION</b>			AIR TACTICAL GROUP SUP.		
CHIEF	Norm Buhl		AIR SUPPORT GROUP SUP.		
DEPUTY	Lloyd Kortge		HELICOPTER COORDINATOR		
LOG3			AIR TANKER/FIXED WING CRD.		
<b>a. SUPPORT BRANCH</b>			<b>10. FINANCE/ADMINISTRATION SECTION</b>		
DIRECTOR			CHIEF	Fauzia Massey	
SUPPLY UNIT			IBA	Roger Gowan	
FACILITIES UNIT	Rudy Schlegel		TIME UNIT	Lessie Sites	
GROUND SUPPORT UNIT			PROCUREMENT UNIT		
<b>b. SERVICE BRANCH</b>			COMPENSATION/CLAIMS UNIT		
DIRECTOR			COST UNIT		
COMMUNICATIONS UNIT			<b>PREPARED BY (PSC3)</b>		
MEDICAL UNIT			B. Smith		
FOOD UNIT					

# Fire Weather Forecast



RAWS Station at fire

## DISCUSSION...

Spot Forecast for Bacon Rind...USFS  
National Weather Service Billings MT  
342 PM MDT Sun Aug 12 2018

Forecast is based on forecast start time of 0700 MDT on August 13. If conditions become unrepresentative...contact the National Weather Service.

## .DISCUSSION...

Monsoonal moisture will affect the fire through Monday night bringing isolated showers and thunderstorms. Ridge of high pressure will bring dry weather Tuesday and Wednesday. Weather disturbance will approach the fire Thursday through Friday bringing increasing chances of showers and thunderstorms. Highs Monday and Tuesday will be in the upper 60s to mid-70s with relative humidities in the 20s. Winds will be northwest 5 to 10 mph on Monday, then northeast Monday night. On Tuesday, expect south winds 5 to 10 mph in the morning... becoming west in the afternoon. Highs will be in the upper 60s to low 70s Wednesday through Friday.

## .MONDAY...

Sky/weather.....Mostly sunny. Isolated rain showers and thunderstorms in the afternoon. Areas of smoke in the morning.  
LAL.....2...1 to 8 strikes/15 min/cell.  
Max temperature.....70-75.  
Min humidity.....24-29 percent.  
Wind (20 ft).....  
Slope/valley.....Northwest winds 5 to 10 mph. Gusty and erratic winds expected near thunderstorms.  
Ridgetop.....West 10 to 20 mph.  
Mixing height.....100 ft AGL in the morning...increasing to 13400 ft AGL in the afternoon.  
Transport winds.....Southwest 5 to 15 mph.  
Haines index.....4.  
CWR.....9 percent.

## .MONDAY NIGHT...

Sky/weather.....Mostly cloudy. Isolated rain showers and thunderstorms in the evening...then isolated rain showers overnight.  
LAL.....2...1 to 8 strikes/15 min/cell.  
Min temperature.....41-46.  
Max humidity.....77-82 percent.  
Wind (20 ft).....  
Slope/valley.....Northeast winds 5 to 10 mph. Gusty and erratic winds expected near thunderstorms.  
Ridgetop.....Southwest 5 to 15 mph.  
Mixing height.....13400 ft AGL in the evening...decreasing to 100 ft AGL overnight.  
Transport winds.....Southwest 5 to 10 mph.  
CWR.....9 percent.

## .TUESDAY...

Sky/weather.....Sunny.  
LAL.....1...no thunderstorms.  
Max temperature.....69-74.  
Min humidity.....22-27 percent.  
Wind (20 ft).....  
Slope/valley.....South winds 5 to 10 mph in the morning...becoming west in the afternoon.  
Ridgetop.....West 5 to 15 mph.  
Mixing height.....100 ft AGL in the morning...increasing to 13100 ft AGL in the afternoon.  
Transport winds.....West 5 to 15 mph.  
Haines index.....4.  
CWR.....0 percent.

*FIRE BEHAVIOR FORECAST*

**FORECAST NUMBER:** 17

**TYPE OF FIRE:** Wildfire

**FIRE NAME:** Bacon Rind

**OPERATIONAL PERIOD:** August 13, 2018

**DATE ISSUED:** August 12, 2018

**TIME ISSUED:** 1800

**UNIT:** MT-CGF

**SIGNED:** *1st Todd Erdody*, Todd Erdody, LTAN(t)

**INPUTS**

**WEATHER SUMMARY: (For full forecast refer to the Spot Forecast)**

**Today:** Mostly sunny with isolated rain showers and thunderstorms in the afternoon.

Max Temp: 70-75 degrees Min RH: 24-29%

Afternoon 20 ft. Winds: Northwest 5-10 mph, Ridgetop: West 10 to 20 mph.

**Haines Index: 4**

**Tonight:** Mostly cloudy with isolated rain showers and thunderstorms. Low Temp:

41-46 degrees Max RH: 77-82% Winds: Southwest 5 to 15 mph

**Tuesday:** Sunny. Max Temp: 69-74 degrees Min RH: 22-27% Winds: South to west  
5 to 15 mph.

**OUTPUTS**

**FIRE BEHAVIOR**

**GENERAL:**

Expect group torching with short range spotting (<0.2 mile). Spotting up to 0.4 miles is possible from thunderstorm outflow winds. RH will recover tonight, which could lead to minimal fire behavior overnight.

Mixed conifer (Fuel Models TU5 and TL4): ROS – 0 to 6 ch/hr, FL - 0 to 6 ft

**SPECIFIC:** Not Applicable

**AIR OPERATIONS:** Not Applicable

**SAFETY**

**Be cautious around fire-weakened trees and existing snags, especially with outflow winds from thunderstorms.**

**Stay hydrated!**

**ICS Form 204**

<b>1. BRANCH</b>	<b>2. DIVISION/GROUP</b>	<b>ASSIGNMENT LIST</b>
------------------	--------------------------	------------------------

<b>3. INCIDENT NAME</b> Bacon Rind	<b>4. OPERATIONAL PERIOD</b> DATE 8/13/2018 TIME 0700-2000
---------------------------------------	---

**5. OPERATIONAL PERSONNEL**

OPERATIONS CHIEF	S. Smith/Hahn	DIVISION/GROUP SUPERVISOR	
BRANCH DIRECTOR		AIR TACTICAL GROUP SUPERVISOR	

**6. RESOURCES ASSIGNED TO THIS PERIOD**

STRIKE TEAM/TASK FORCE/ RESOURCE DESIGNATOR	EMT	LEADER	NUMBER PERSONS	TRANS. NEED	Last Day	PICKUP PT./TIME	DROP OFF PT./TIME
Custer Gallatin C-1	2	Toole/Dillaway	21	N	8/18	0700	2000
E226 St. Regis E-15		Spencer	2	N	8/16	0700	2000
E6351 FWS E-18		Duerkop	3	N	8/16	0700	2000
E742 MNDNR E-19		Silgjord	3	N	8/16	0700	2000
TFLD		Jake Hoppe	1	N	8/23	0700	2000

**7. CONTROL OPERATIONS**

**Task:** Monitor fire progression and smoke impacts from Hwy 191. Implement holding actions as needed along Hwy 191. Continue implementing fuels projects and providing Lookouts.

**Purpose:** Provide for public and firefighter safety.

**End State:** Ensure efficient traffic flow on Hwy 191.

- 8. SPECIAL INSTRUCTIONS**
- Coordinate actions with other operational resources and law enforcement as needed.
  - Monitor Management Action Points as necessary based on observed and modeled fire behavior to emphasize strategic planning and sound risk decision making.
  - If fire spots east of Hwy 191 suppress with resources on incident.

**9. DIVISION/GROUP COMMUNICATIONS SUMMARY**

FUNCTION		FREQ.	SYSTEM	CHAN.	FUNCTION		FREQ.	SYSTEM	CHAN.
COMMAND	LOCAL				SUPPORT	LOCAL			
	REPEAT					REPEAT			
DIV./GROUP TACTICAL					GROUND TO AIR				

PREPARED BY (RESOURCE UNIT LEADER)	APPROVED BY (PLANNING SECT. CH.)	DATE	TIME
------------------------------------	----------------------------------	------	------

 <p style="color: red; text-align: center;">Link to NIFC FTP maps of Bacon Rind Fire</p>	
--	--



<b>MEDICAL PLAN</b>	1. Incident Name Bacon Rind	2. Date Prepared 08/05/18	3. Time Prepared 1130	4. Operational Period 8/13/2018				
<b>5. Incident Medical Aid Station</b>								
			Paramedics Yes No					
West Yellowstone Clinic		406-646-9441		x				
11 Electric St, West Yellowstone, MT 59758								
<b>6. Transportation</b>								
<b>A. Ambulance Services</b>								
Name	Address	Phone	Paramedics Yes No					
West Yellowstone EMS	West Yellowstone	406-646-7600	X					
Air Evac		Call 911 or Dispatch						
<b>B. Incident Ambulances</b>								
Name	Location	Paramedics Yes No						
<b>7. Hospitals</b>								
Name	Address	Travel Time Air Ground		Phone	Helipad Yes No		Burn Center Yes No	
Big Sky Hospital	334 Town Center Ave. Big Sky MT	20m	45m	406-995-6995	X			X
Bozeman Deaconess	915 Highland Blvd. Bozeman MT Level 3 trauma	40m	90m	406-585-1000	X			X
Salt Lake City Burn Center	Salt Lake City, Utah – Level 1 trauma		5hr	Burn Center 801-581-3050 Emergency 801-581-2292	X		X	
Eastern ID Regional Medical Center	3100 Channing Way Idaho Falls, ID	60m	2hr	208-529-6111	X			X
<b>8. Medical Emergency Procedures</b>								
<ul style="list-style-type: none"> <li><b>FOR A NON-EMERGENCY INCIDENT, WORK THROUGH CHAIN OF COMMAND TO REPORT AND TRANSPORT INJURED PERSONNEL AS NECESSARY.</b></li> <li><b>FOR A MEDICAL EMERGENCY: IDENTIFY ON SCENE INCIDENT COMMANDER BY NAME AND POSITION AND ANNOUNCE "MEDICAL EMERGENCY" TO INITIATE RESPONSE FROM IMT COMMUNICATIONS/DISPATCH.</b></li> </ul>								
Prepared by (PSC3) Todd Opperman				10. Reviewed by (Safety Officer) Scott Wuebber				



# MEDICAL PLAN (ICS 206 WF)

Controlled Unclassified Information//Basic

## Medical Incident Report

**FOR A NON-EMERGENCY INCIDENT, WORK THROUGH CHAIN OF COMMAND TO REPORT AND TRANSPORT INJURED PERSONNEL AS NECESSARY.**

**FOR A MEDICAL EMERGENCY: IDENTIFY ON SCENE INCIDENT COMMANDER BY NAME AND POSITION AND ANNOUNCE "MEDICAL EMERGENCY" TO INITIATE RESPONSE FROM IMT COMMUNICATIONS/DISPATCH.**

**Use the following items to communicate situation to communications/dispatch.**

1. CONTACT COMMUNICATIONS / DISPATCH (Verify correct frequency prior to starting report)  
Ex: "Communications, Div. Alpha. Stand-by for Emergency Traffic."
2. INCIDENT STATUS: Provide incident summary (including number of patients) and command structure.  
Ex: "Communications, I have a Red priority patient, unconscious, struck by a falling tree. Requesting air ambulance to Forest Road 1 at (Lat./Long.) This will be the Trout Meadow Medical, IC is TFLD Jones. EMT Smith is providing medical care."

Severity of Emergency / Transport Priority	<input type="checkbox"/> RED / PRIORITY 1 Life or limb threatening injury or illness. Evacuation need is IMMEDIATE Ex: Unconscious, difficulty breathing, bleeding severely, 2° – 3° burns more than 4 palm sizes, heat stroke, disoriented. <input type="checkbox"/> YELLOW / PRIORITY 2 Serious Injury or illness. Evacuation may be DELAYED if necessary. Ex: Significant trauma, unable to walk, 2° – 3° burns not more than 1-3 palm sizes. <input type="checkbox"/> GREEN / PRIORITY 3 Minor Injury or illness. Non-Emergency transport Ex: Sprains, strains, minor heat-related illness.	
Nature of Injury or Illness & Mechanism of Injury		Brief Summary of Injury or Illness (Ex: Unconscious, Struck by Falling Tree)
Transport Request		Air Ambulance / Short Haul/Hoist Ground Ambulance / Other
Patient Location		Descriptive Location & Lat. / Long. (WGS84)
Incident Name		Geographic Name + "Medical" (Ex: Trout Meadow Medical)
On-Scene Incident Commander		Name of on-scene IC of Incident within an Incident (Ex: TFLD Jones)
Patient Care		Name of Care Provider (Ex: EMT Smith)

3. INITIAL PATIENT ASSESSMENT: Complete this section for each patient as applicable (start with the most severe patient)

Patient Assessment: See IRPG page 106

Treatment:

4. TRANSPORT PLAN:

Evacuation Location (if different): (Descriptive Location (drop point, intersection, etc.) or Lat. / Long.) Patient's ETA to Evacuation Location:

Helispot / Extraction Site Size and Hazards:

5. ADDITIONAL RESOURCES / EQUIPMENT NEEDS:

Example: Paramedic/EMT, Crews, Immobilization Devices, AED, Oxygen, Trauma Bag, IV/Fluid(s), Splints, Rope rescue, Wheeled litter, HAZMAT, Extrication

6. COMMUNICATIONS: Identify State Air/Ground EMS Frequencies and Hospital Contacts as applicable

Function	Channel Name/Number	Receive (RX)	Tone/NAC *	Transmit (TX)	Tone/NAC *
COMMAND					
AIR-TO-GRND					
TACTICAL					

7. CONTINGENCY: **Considerations:** If primary options fail, what actions can be implemented in conjunction with primary evacuation method? Be thinking ahead.

8. ADDITIONAL INFORMATION: Updates/Changes, etc.

**REMEMBER:** Confirm ETA's of resources ordered. Act according to your level of training. Be Alert. Keep Calm. Think Clearly. Act Decisively.

# Fire Information



## Key Messages for Fire Personnel —Bacon Rind Fire

July 29, 2018

### Key messages

- 1) **Public and firefighter safety is our first priority.**
- 2) **Fire management decisions are based on many factors.**
- 3) **Wildland fire is an essential, natural process.**
- 4) **We all work together to manage wildland fire.**

### Key messages and Supporting Points

#### 1) **Public and firefighter safety is our first priority.**

- a) No structure, or natural or cultural resource, is worth a human life.
- b) When firefighters plan a tactic, the first question is always, "Can we do this safely?" If the answer is "no," they will take another direction.

#### 2) **Fire management decisions are based on many factors.**

- a) Not all fires are managed the same way.
- b) Responding to a fire may include using multiple strategies. The response could range from monitoring a fire that is beneficial to the landscape to aggressively putting out a fire that threatens people, homes, important natural or cultural resources. Fire managers can also use a combination approach, actively suppressing part of the fire while monitoring other parts of the fire.
- c) Decisions are based on safety for the public and firefighters, what is threatened by the fire (values at risk), weather forecast, fire behavior, and what the fire and land-use plans or objectives are for the area.
- d) All human caused fires are aggressively put out.

#### 3) **Wildland fire is an essential, natural process.**

- a) Fire has shaped this landscape for thousands of years. In the greater Yellowstone ecosystem, fire is important for the survival of many plants and animals.
  - i. Fire releases and recycles nutrients tied up in vegetation, duff and organic soil layers.
  - ii. Fire stimulates some plants like ceanothus (snowbrush) and trees like lodgepole pine to release seeds and creates favorable sites for dormant seeds to grow.
  - iii. Fire stimulates some plants such as willow and aspen to grow new shoots from surviving roots or root crowns.
  - iii. Fire maintains age and species diversity in the forest, increasing the number of niches for wildlife species.
- c. Fire reduces the fuel load so that future fires are not as intense.

#### 4) **We all work together to manage wildland fire.**

- a) Fire does not acknowledge jurisdictional boundaries
- b) Local, state, tribal and federal firefighters all work together to keep the public safe and natural resources protected. Pooling our strengths, resources and experience improves our effectiveness and keeps costs down.

**A lot of work is done to prepare protection plans for our values such as buildings and transportation routes. The word "evacuation" should only be mentioned if you expect people to immediately leave the area.**

**Current Fire Information on InciWeb:**

**<https://inciweb.nwcg.gov/incident/5992/>**

**Year-round Yellowstone National Park Road Conditions: 307-344-2117**












InciWeb



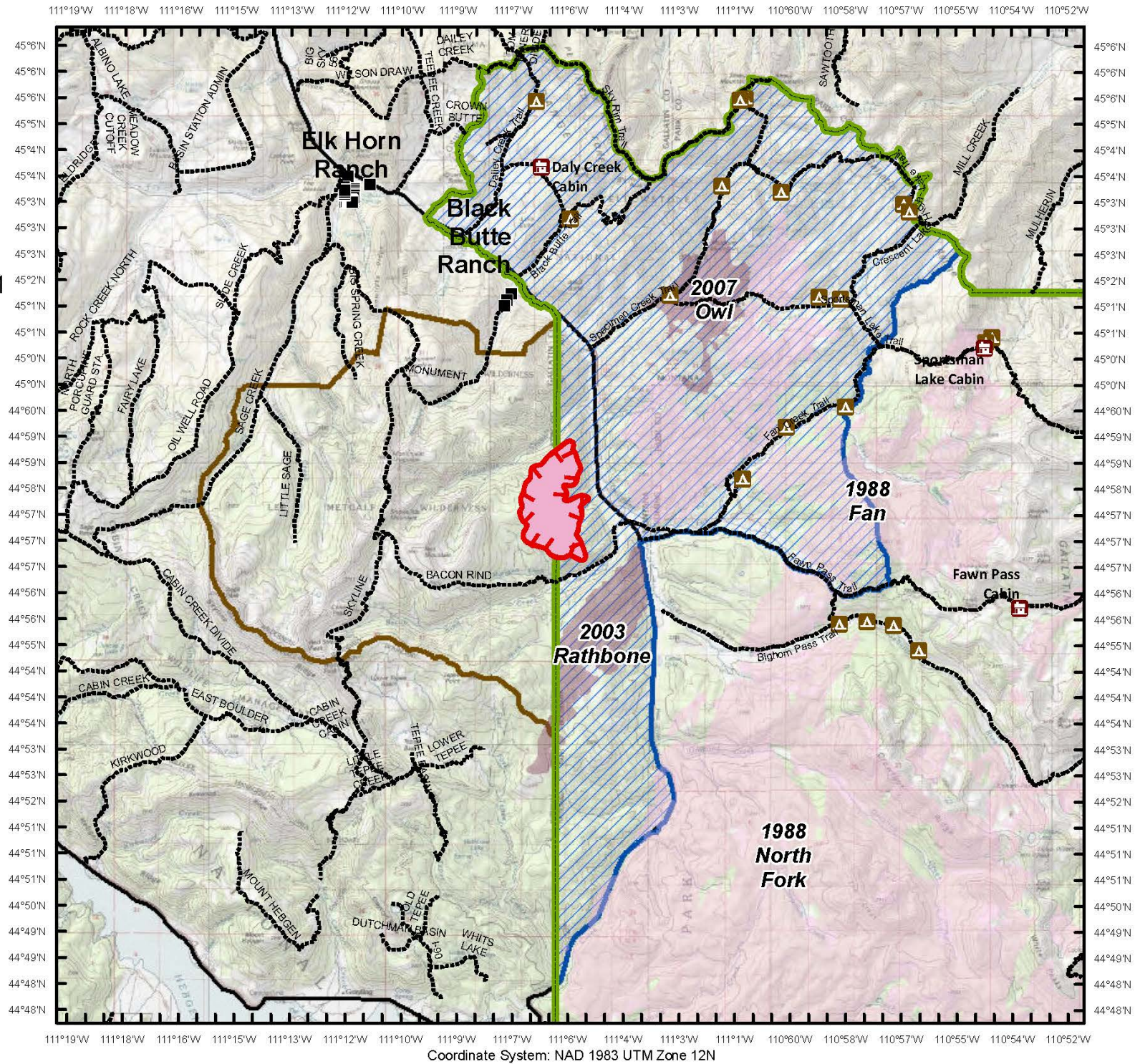
**Bacon Rind Fire**  
 MT-CGF-000095  
 Operational Period:  
 August 13, 2018  
 IAP Map  
 Day Shift  
 Approx. 1388 ac.  
 755 ac. USFS  
 633 ac. NPS  
 as of 08/12/2018 1351



-  Backcountry Campsites
-  Structure Locations
-  Uncontrolled Fire Edge
-  Wildfire Daily Fire Perimeter
-  YNP Boundary
-  Lee Metcalf Wilderness
-  Backcountry Cabins
-  GYA Roads, Major
-  NPS Closure Area



Prepared by: Howard Williams GISS  
 Date: 8/12/2018 Time: 7:40:39 PM



Coordinate System: NAD 1983 UTM Zone 12N



