

Bacon Rind Fire

Incident Action Plan

Tuesday August 14, 2018
Custer Gallatin National Forest



MAJOR HAZARDS AND RISKS

Traffic / Driving Chainsaw / Felling	Complacency Bear encounters
---	--------------------------------

SAFETY THOUGHT

We have plenty of work to do.

Do not become complacent.

The hazards are still there.

Our awareness needs to be high, ready to practice situation awareness today and every day.

Continue to use “bear safe” food and attractant practices in camp and in your work area.

Approved coolers must be locked on both corners with tight fitting locks and no more than a ¼” gap.

See logistics for cooler bolts if you need some.

Use of seatbelts & headlights are mandatory.

Drive at posted speeds or less if appropriate.

Expect road conditions to deteriorate when wet!

Watch for stopped vehicles & wildlife on the road!

Use spotters when backing, if you see someone backing with no spotter, offer to be their spotter.

ICS Form 202

INCIDENT OBJECTIVES	1. INCIDENT NAME Bacon Rind	2. DATE 8/14/2018	3. TIME 0700									
4. OPERATIONAL PERIOD (DATE/TIME)												
<p>5. GENERAL CONTROL OBJECTIVES FOR THE INCIDENT (INCLUDE ALTERNATIVES)</p> <p>Leader's Intent: The highest priority will be focused on minimizing risk to firefighters and the public, by continually using the risk management process.</p> <p>It is the expectation that every person assigned in any type of leadership role does a risk assessment and provides the appropriate mitigation measures prior to engaging in any activity. If a hazard cannot be mitigated to an acceptable level, the issue will be elevated to the next level.</p> <p>Management Requirements:</p> <ul style="list-style-type: none"> - Ensure firefighter and public safety is the first priority in every operation. - Maintain and develop relationships with adjacent communities, agencies, cooperators, concessionaires and other stakeholders while providing timely and consistent information coordinated with the USFS. A common message will be communicated thru all channels. <p>Incident Objectives</p> <ol style="list-style-type: none"> 1. Minimize Impacts to identified values at risk, including Black Butte Ranch, Elkhorn Ranch, Highway 191, powerline corridors, and trail infrastructure. 2. Balance resource value with suppression impacts; where and when appropriate, allow fire to play its natural role in the wilderness ecosystem as a process of ecological change. 3. Minimize impacts to natural and cultural resources, watersheds, and threatened and endangered species. Minimize suppression impacts in the Lee Metcalf Wilderness by allowing no mechanized equipment unless approved by the line officer. 4. Minimize potential bear/human interactions. All personnel assigned to the incident must comply with the Food Storage Special Order 36 CFR 261.58, in effect for the Greater Yellowstone Ecosystem (GYE). 												
6. WEATHER FORECAST FOR OPERATIONAL PERIOD		*See attached										
7. GENERAL SAFETY MESSAGE		*See attached										
<p>Primary risk factors are remote and isolated work areas requiring a functioning communication system and aviation hazards.</p> <p>One of the greatest incident risk is driving Hwy 191. Beware of your safety and public watching the fire.</p> <p>8. Attachments (X if attached)</p> <table border="0" style="width: 100%;"> <tr> <td style="width: 33%;">X Organization List (ICS 203)</td> <td style="width: 33%;">X Medical Plan (ICS 206)</td> <td style="width: 33%;">X <u>Fire Weather Forecast</u></td> </tr> <tr> <td>X Assignment List (ICS 204)</td> <td>X Incident Map</td> <td>X <u>Fire Behavior Forecast</u></td> </tr> <tr> <td>X Communications Plan (ICS 205)</td> <td>X Air Ops (ICS 220)</td> <td>X <u>Fire Information Message</u></td> </tr> </table>				X Organization List (ICS 203)	X Medical Plan (ICS 206)	X <u>Fire Weather Forecast</u>	X Assignment List (ICS 204)	X Incident Map	X <u>Fire Behavior Forecast</u>	X Communications Plan (ICS 205)	X Air Ops (ICS 220)	X <u>Fire Information Message</u>
X Organization List (ICS 203)	X Medical Plan (ICS 206)	X <u>Fire Weather Forecast</u>										
X Assignment List (ICS 204)	X Incident Map	X <u>Fire Behavior Forecast</u>										
X Communications Plan (ICS 205)	X Air Ops (ICS 220)	X <u>Fire Information Message</u>										
9. PREPARED BY (PLANNING SECTION CHIEF) B. Smith		10. APPROVED BY (INCIDENT COMMANDER)										

Organization Assignment List, ICS Form 203

ORGANIZATION ASSIGNMENT LIST		1. INCIDENT NAME Bacon Rind	2. DATE PREPARED 8/12/2018	3. TIME PREPARED 1900
POSITION	NAME	4. OPERATIONAL PERIOD (DATE/TIME) 8/14/2018; 0700-2000		
5. INCIDENT COMMAND AND STAFF		9. OPERATIONS SECTION		
INCIDENT COMMANDER	Kyle Inabnit 8/19	CHIEF	Steve Smith	
DEPUTY ICT3t	Jeff Flick 8/17	DEPUTY t	Adrian (Adon) Hahn 8/17	
SAFETY OFFICER	Scott Wuebber 8/18	a. BRANCH I- DIVISION/GROUPS		
INFORMATION OFFICER	Jeff Gildehaus 8/26 Scott Babinowick 8/18	BRANCH DIRECTOR		
LIAISON OFFICER	Molly Moore	DEPUTY		
6. AGENCY REPRESENTATIVES		DIVISION/GROUP		
AGENCY	NAME	DIVISION/ GROUP		
USFS	Jason Brey	DIVISION/ GROUP		
Gallatin Co.	Patrick Lonergan	DIVISION/GROUP		
Yellowstone NP	John Cataldo	DIVISION /GROUP		
7. PLANNING SECTION		b. BRANCH II- DIVISIONS/GROUPS		
CHIEF	Becky Smith 8/25	BRANCH DIRECTOR		
RESOURCES UNIT		DEPUTY		
SITUATION UNIT		DIVISION/GROUP		
DOCUMENTATION UNIT		DIVISION/GROUP		
DEMOBILIZATION UNIT		DIVISION/GROUP		
GISS	YELL GIS	c. BRANCH III- DIVISIONS/GROUPS		
LTANT		BRANCH DIRECTOR		
REAF (USFS)	Randy Scarlett	DEPUTY		
READ(t) (NPS)	Brian Teets	DIVISION/GROUP		
8. LOGISTICS SECTION		DIVISION/GROUP		
CHIEF	Norm Buhl	d. AIR OPERATIONS BRANCH		
DEPUTY		AIR OPERATIONS BR. DIR.		
LOG3		AIR TACTICAL GROUP SUP.		
a. SUPPORT BRANCH		AIR SUPPORT GROUP SUP.		
DIRECTOR		HELICOPTER COORDINATOR		
SUPPLY UNIT		AIR TANKER/FIXED WING CRD.		
FACILITIES UNIT	Rudy Schlegel	10. FINANCE/ADMINISTRATION SECTION		
GROUND SUPPORT UNIT		CHIEF	Fauzia Massey	
b. SERVICE BRANCH		IBA	Roger Gowan	
DIRECTOR		TIME UNIT	Lessie Sites	
COMMUNICATIONS UNIT		PROCUREMENT UNIT		
MEDICAL UNIT		COMPENSATION/CLAIMS UNIT		
FOOD UNIT		COST UNIT		
PREPARED BY (PSC3) B. Smith				

Fire Weather Forecast



RAWS Station at fire

DISCUSSION...

Spot Forecast for Bacon Rind...USFS
National Weather Service Billings MT
343 PM MDT Mon Aug 13 2018

Forecast is based on forecast start time of 1600 MDT on August 13.

.DISCUSSION...

Hazy sunshine with some clouds is expected for the remainder of the afternoon at the fire site. There is a slight chance of a shower developing this evening with isolated lightning possible. Any shower activity could produce erratic gusts to 30 to 40 mph. Temps and humidity for Tuesday are not expected to be much different than today's. The chance of any shower activity will be very low again Tuesday. BT

.TUESDAY...

Sky/weather.....Mostly sunny. Areas of smoke. Isolated rain showers and thunderstorms in the afternoon.

LAL.....2...1 to 8 strikes/15 min/cell.

Max temperature.....around 81 at bottom elevation to around 72 at the upper elevation.

Min humidity.....15 to 20 percent at bottom elevation to 26 percent at upper elevation.

Wind (20 ft).....

Slope/valley.....Northwest winds 5 to 10 mph. Gusty and erratic winds expected near thunderstorms in the afternoon.

Ridgetop.....West 5 to 10 mph.

Mixing height.....200 ft AGL in the morning...increasing to 11700 ft AGL in the afternoon.

Transport winds.....Northwest 5 to 10 mph.

Haines index.....3.

CWR.....7 percent.

\$\$

Forecaster...Tesar

ICS Form 204

ASSIGNMENT LIST

3. INCIDENT NAME
Bacon Rind

4. OPERATIONAL PERIOD

DATE 8/14/2018 **TIME** 0700-2000

5. OPERATIONAL PERSONNEL

OPERATIONS CHIEF S. Smith/Hahn **DIVISION/GROUP SUPERVISOR** _____
BRANCH DIRECTOR _____ **AIR TACTICAL GROUP SUPERVISOR** _____

6. RESOURCES ASSIGNED TO THIS PERIOD

STRIKE TEAM/TASK FORCE/ RESOURCE DESIGNATOR	EMT	LEADER	NUMBER PERSONS	TRANS. NEED	Last Day	PICKUP PT./TIME	DROP OFF PT./TIME
Custer Gallatin	C-1	2	Toole/Dillaway	21	N	8/18	0700 2000
E226 St. Regis	E-15		Spencer	2	N	8/16	0700 2000
E6351 FWS	E-18		Duerkop	3	N	8/16	0700 2000
E742 MNDNR	E-19		Silgjord	3	N	8/16	0700 2000
TFLD			Jake Hoppe	1	N	8/23	0700 2000

7. CONTROL OPERATIONS

Task: Monitor fire progression and smoke impacts from Hwy 191. Implement holding actions as needed along Hwy 191. Continue implementing fuels projects and providing lookouts.

Purpose: Provide for public and firefighter safety.

End State: Ensure efficient traffic flow on Hwy 191.

8. SPECIAL INSTRUCTIONS

- Coordinate actions with other operational resources and law enforcement as needed.
- Monitor Management Action Points as necessary based on observed and modeled fire behavior to emphasize strategic planning and sound risk decision making.
- If fire spots east of Hwy 191 suppress with resources on incident.

[Link to NIFC FTP maps of Bacon Rind Fire](#)



9. DIVISION/GROUP COMMUNICATIONS SUMMARY

FUNCTION		FREQ.	SYSTEM	CHAN.	FUNCTION		FREQ.	SYSTEM	CHAN.
COMMAND	LOCAL	See Comm. Plan			SUPPORT	LOCAL	See Comm. Plan		
	REPEAT					REPEAT			

PREPARED BY (PSC3)
B. Smith

MEDICAL PLAN	1. Incident Name Bacon Rind	2. Date Prepared 08/05/18	3. Time Prepared 1130	4. Operational Period 8/14/2018				
5. Incident Medical Aid Station								
Name		Address		Phone	Paramedics Yes No			
West Yellowstone Clinic		11 Electric St, West Yellowstone, MT		406-646-9441	x			
6. Transportation								
A. Ambulance Services								
Name		Address		Phone	Paramedics Yes No			
West Yellowstone EMS		West Yellowstone		406-646-7600	X			
Air Evac				Call 911 or Dispatch				
B. Incident Ambulances								
Name		Location			Paramedics Yes No			
7. Hospitals								
Name	Address	Travel Time Air Ground		Phone	Helipad Yes No		Burn Center Yes No	
Big Sky Hospital	334 Town Center Ave. Big Sky MT	20 m	45 m	406-995-6995	X			X
Bozeman Deaconess	915 Highland Blvd. Bozeman MT Level 3 trauma	40 m	90 m	406-585-1000	X			X
Salt Lake City Burn Center	Salt Lake City, Utah – Level 1 trauma		5 hr	Burn Center 801-581-3050 Emergency 801-581-2292	X		X	
Eastern ID Regional Medical Center	3100 Channing Way Idaho Falls, ID	60 m	2 hr	208-529-6111	X			X
8. Medical Emergency Procedures								
<ul style="list-style-type: none"> • FOR A NON-EMERGENCY INCIDENT, WORK THROUGH CHAIN OF COMMAND TO REPORT AND TRANSPORT INJURED PERSONNEL AS NECESSARY. • FOR A MEDICAL EMERGENCY: IDENTIFY ON SCENE INCIDENT COMMANDER BY NAME AND POSITION AND ANNOUNCE "MEDICAL EMERGENCY" TO INITIATE RESPONSE FROM IMT COMMUNICATIONS/DISPATCH. 								
Prepared by (PSC3) B. Smith				10. Reviewed by (Safety Officer) Scott Wuebber				

MEDICAL PLAN (ICS 206 WF)

Controlled Unclassified Information//Basic

Medical Incident Report

- FOR A NON-EMERGENCY INCIDENT, WORK THROUGH CHAIN OF COMMAND TO REPORT AND TRANSPORT INJURED PERSONNEL AS NECESSARY.
- FOR A MEDICAL EMERGENCY: IDENTIFY ON SCENE INCIDENT COMMANDER BY NAME AND POSITION AND ANNOUNCE "MEDICAL EMERGENCY" TO INITIATE RESPONSE FROM IMT COMMUNICATIONS/DISPATCH.

Use the following items to communicate situation to dispatch:

1. CONTACT COMMUNICATIONS / DISPATCH (Verify correct frequency prior to starting report)

Ex: "Communications, Div. Alpha. Stand-by for Emergency Traffic."

2. INCIDENT STATUS: Provide incident summary (including number of patients) and command structure.

Ex: "Communications, I have a Red priority patient, unconscious, struck by a falling tree. Requesting air ambulance to Forest Road 1 at (Lat./Long.) This will be the Trout Meadow Medical, IC is TFLD Jones. EMT Smith is providing medical care."

Severity of Emergency / Transport Priority	<input type="checkbox"/> RED / PRIORITY 1 Life or limb threatening injury or illness. Evacuation need is IMMEDIATE <i>Ex: Unconscious, difficulty breathing, bleeding severely, 2° – 3° burns more than 4 palm sizes, heat stroke, disoriented.</i> <input type="checkbox"/> YELLOW / PRIORITY 2 Serious Injury or illness. Evacuation may be DELAYED if necessary. <i>Ex: Significant trauma, unable to walk, 2° – 3° burns not more than 1-3 palm sizes.</i> <input type="checkbox"/> GREEN / PRIORITY 3 Minor Injury or illness. Non-Emergency transport <i>Ex: Sprains, strains, minor heat-related illness.</i>	
Nature of Injury or Illness & Mechanism of Injury		Brief Summary of Injury or Illness <i>(Ex: Unconscious, Struck by Falling Tree)</i>
Transport Request		Air Ambulance / Short Haul/Hoist Ground Ambulance / Other
Patient Location		Descriptive Location & Lat. / Long. (WGS84)
Incident Name		Geographic Name + "Medical" <i>(Ex: Trout Meadow Medical)</i>
On-Scene Incident Commander		Name of on-scene IC of Incident within an Incident <i>(Ex: TFLD Jones)</i>
Patient Care		Name of Care Provider <i>(Ex: EMT Smith)</i>

3. INITIAL PATIENT ASSESSMENT: Complete this section for each patient as applicable (start with the most severe patient)

Patient Assessment: See IRPG page 106

Treatment:

4. TRANSPORT PLAN:

Evacuation Location (if different): (Descriptive Location (drop point, intersection, etc.) or Lat. / Long.) Patient's ETA to Evacuation Location:

Helispot / Extraction Site Size and Hazards:

5. ADDITIONAL RESOURCES / EQUIPMENT NEEDS:

Example: Paramedic/EMT, Crews, Immobilization Devices, AED, Oxygen, Trauma Bag, IV/Fluid(s), Splints, Rope rescue, Wheeled litter, HAZMAT, Extrication

6. COMMUNICATIONS: Identify State Air/Ground EMS Frequencies and Hospital Contacts as applicable

Function	Channel Name/Number	Receive (RX)	Tone/NAC *	Transmit (TX)	Tone/NAC *
COMMAND					
AIR-TO-GRND					
TACTICAL					

7. CONTINGENCY: Considerations: If primary options fail, what actions can be implemented in conjunction with primary evacuation method? Be thinking ahead.

8. ADDITIONAL INFORMATION: Updates/Changes, etc.

REMEMBER: Confirm ETA's of resources ordered. Act according to your level of training. Be Alert. Keep Calm. Think Clearly. Act Decisively.

Fire Information



Key Messages for Fire Personnel —Bacon Rind Fire

July 29, 2018

Key messages

Public and firefighter safety is our first priority.

Fire management decisions are based on many factors.

Wildland fire is an essential, natural process.

We all work together to manage wildland fire. Key messages and Supporting Points

1) Public and firefighter safety is our first priority.

- a) No structure, or natural or cultural resource, is worth a human life.
- b) When firefighters plan a tactic, the first question is always, “Can we do this safely?” If the answer is “no,” they will take another direction.

2) Fire management decisions are based on many factors.

- a) Not all fires are managed the same way.
- b) Responding to a fire may include using multiple strategies. The response could range from monitoring a fire that is beneficial to the landscape to aggressively putting out a fire that threatens people, homes, important natural or cultural resources. Fire managers can also use a combination approach, actively suppressing part of the fire while monitoring other parts of the fire.
- c) Decisions are based on safety for the public and firefighters, what is threatened by the fire (values at risk), weather forecast, fire behavior, and what the fire and land-use plans or objectives are for the area.
- d) All human caused fires are aggressively put out.

3) Wildland fire is an essential, natural process.

- a) Fire has shaped this landscape for thousands of years. In the greater Yellowstone ecosystem, fire is important for the survival of many plants and animals.
 - a. Fire releases and recycles nutrients tied up in vegetation, duff and organic soil layers.
 - b. Some plants and animals depend on fire for survival.
 - i. Fire stimulates some plants like ceanothus (snowbrush) and trees like lodgepole pine to release seeds and creates favorable sites for dormant seeds to grow.
 - ii. Fire stimulates some plants such as willow and aspen to grow new shoots from surviving roots or root crowns.
 - iii. Fire maintains age and species diversity in the forest, increasing the number of niches for wildlife species.
 - c. Fire reduces the fuel load so that future fires are not as intense.

4) We all work together to manage wildland fire.

- a) Fire does not acknowledge jurisdictional boundaries
- b) Local, state, tribal and federal firefighters all work together to keep the public safe and natural resources protected. Pooling our strengths, resources and experience improves our effectiveness and keeps costs down.

A lot of work is done to prepare protection plans for our values such as buildings and transportation routes. The word “evacuation” should only be mentioned if you expect people to immediately leave the area.

Current Fire Information on InciWeb:

<https://inciweb.nwcg.gov/incident/5992/>

Year-round Yellowstone National Park Road Conditions: 307-344-2117



InciWeb

Bacon Rind Fire

MT-CGF-000095

Operational Period:
August 13, 2018

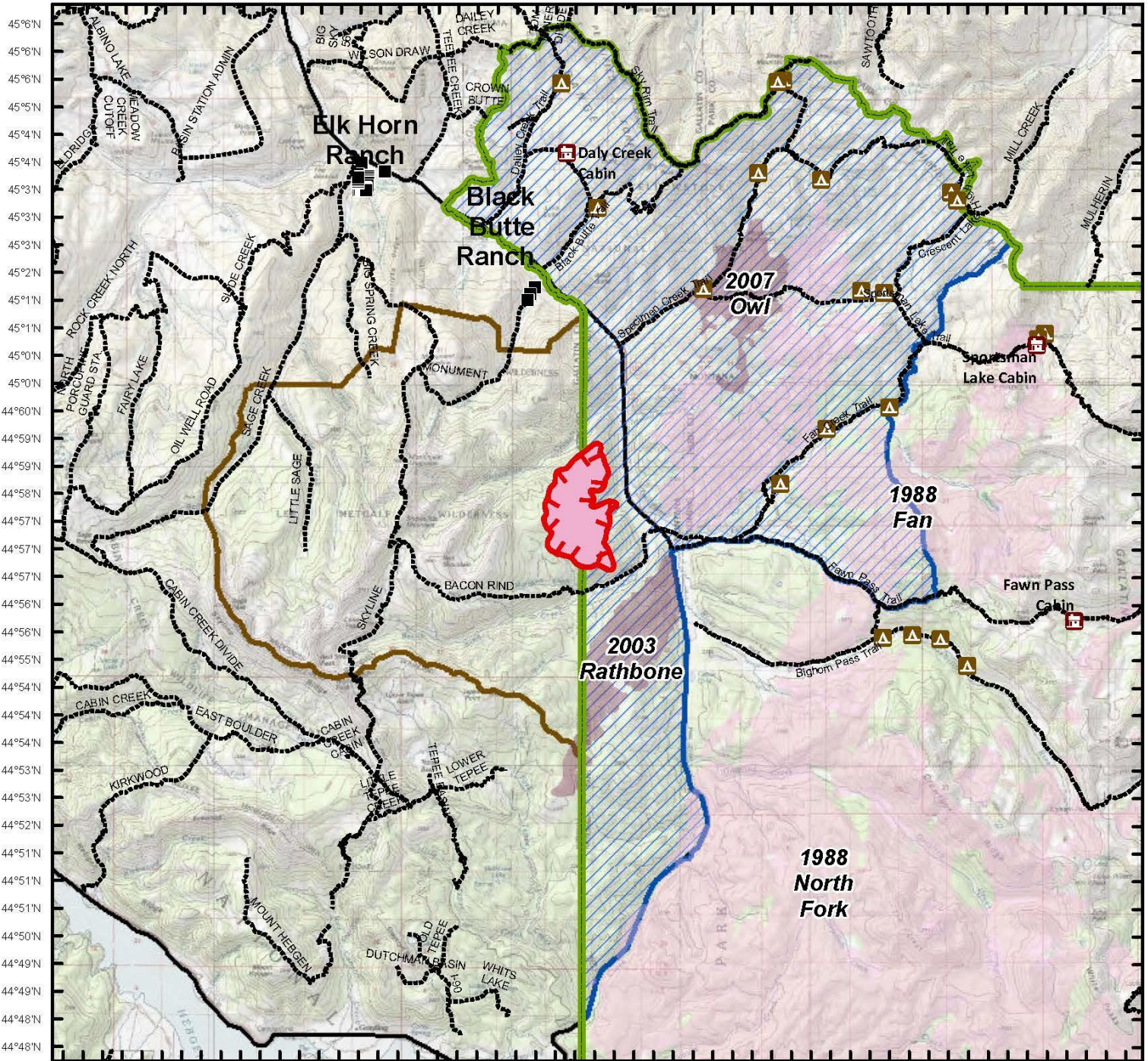
IAP Map
Day Shift

Approx. 1388 ac.
755 ac. USFS
633 ac. NPS

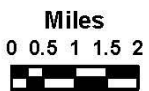
as of 08/12/2018 1351



111°19'W 111°18'W 111°16'W 111°15'W 111°13'W 111°12'W 111°10'W 111°9'W 111°7'W 111°6'W 111°4'W 111°3'W 111°1'W 110°60'W 110°58'W 110°57'W 110°55'W 110°54'W 110°52'W



- Backcountry Campsites
- Structure Locations
- Uncontrolled Fire Edge
- Wildfire Daily Fire Perimeter
- YNP Boundary
- Lee Metcalf Wilderness
- Backcountry Cabins
- GYA Roads, Major
- NPS Closure Area



Prepared by: Howard Williams GISS
Date: 8/12/2018 Time: 7:40:39 PM

111°19'W 111°18'W 111°16'W 111°15'W 111°13'W 111°12'W 111°10'W 111°9'W 111°7'W 111°6'W 111°4'W 111°3'W 111°1'W 110°60'W 110°58'W 110°57'W 110°55'W 110°54'W 110°52'W

Coordinate System: NAD 1983 UTM Zone 12N

