

Bacon Rind Fire

Public

Incident Action Plan

Wednesday August 8, 2018
Custer Gallatin National Forest



Nutrition is a critical part of the health and safety of wildland fire suppression personnel. This is the fuel for the body to perform the work and maintain cognitive abilities. Wildland firefighters on the fireline need 4,000-6,000 calories a day to not go into an energy deficit. (ICP folk 2,500 calories)

Consider the following key points when choosing your meal:

- There are 3 major energy sources in food: carbohydrates, protein, and fats.
- Carbohydrates (also called sugar) offer an immediate source of energy for your body. They provide the fuel for your muscles and organs, such as your brain.
- Proteins are the basic building blocks of the human body. They are made up of amino acids that help build muscles, blood, skin, hair, nails and internal organs.
- Fat is an essential nutrient that provides energy, energy storage, insulation, and contour to the body.
- MTDC recommends eating 150-200 kcals every 2 hours during the work shift to maintain blood glucose and energy levels.

Carbohydrates:

- Studies on athletes have shown that carbohydrates are the most critical energy source for performance and health.
- Carbohydrates are your body's first choice for fuel. If given a choice of several types of foods simultaneously, your body will use the energy from carbohydrates first.
- If you do not eat enough carbohydrates, the following can occur:
 - Fatigue
 - Muscle cramps
 - Poor mental function
- The fire camp lunches (called shift food) are designed to allow firefighters small amounts of food (primarily carbohydrates) that can be easily eaten throughout the work shift.

Discussion Points

How are you eating your fire lunch? Is it all at once or small amounts throughout the day? Think of long duration events (Ultra Runs, triathlons), do you see athletes stopping for a big meal or eating small amounts constantly throughout the race?

For more info listen to Dr. Brett Ruby <http://ontheline.libsyn.com>

MT-CGF-000095 P1L06418 (0111)

Cost Center: PPIMIMRO2D WBS: PF.FSL064018.00.1

ICS Form 202

INCIDENT OBJECTIVES	1. INCIDENT NAME Bacon Rind	2. DATE	3. TIME
4. OPERATIONAL PERIOD (DATE/TIME)			
5. GENERAL CONTROL OBJECTIVES FOR THE INCIDENT (INCLUDE ALTERNATIVES)			
<p>Leader's Intent: The highest priority will be focused on minimizing risk to firefighters and the public, by continually using the risk management process.</p> <p>It is the expectation that every person assigned in any type of leadership role does a risk assessment and provides the appropriate mitigation measures prior to engaging in any activity. If a hazard cannot be mitigated to an acceptable level, the issue will be elevated to the next level.</p> <p>Management Requirements:</p> <ul style="list-style-type: none"> - Ensure firefighter and public safety is the first priority in every operation. - Maintain and develop relationships with adjacent communities, agencies, cooperators, concessionaires and other stakeholders while providing timely and consistent information coordinated with the USFS. A common message will be communicated thru all channels. <p>Incident Objectives</p> <ol style="list-style-type: none"> 1. Minimize Impacts to identified values at risk, including Black Butte Ranch, Elkhorn Ranch, Highway 191, powerline corridors and trail infrastructure. 2. Balance resource value with suppression impacts; where and when appropriate, allow fire to play its natural role in the wilderness ecosystem as a process of ecological change. 3. Minimize impacts to natural and cultural resources, watersheds, and threatened and endangered species. Minimize suppression impacts in the Lee Metcalf Wilderness by allowing no mechanized equipment unless approved by the line officer. 4. Minimize potential bear/human interactions. All personnel assigned to the incident must comply with the Food Storage Special Order 36 CFR 261.58, in effect for the Greater Yellowstone Ecosystem (GYE). 			
6. WEATHER FORECAST FOR OPERATIONAL PERIOD		*See attached	
7. GENERAL SAFETY MESSAGE		*See attached	
<p>Primary risk factors are remote and isolated work areas requiring a functioning communication system and aviation hazards.</p> <p>One of the greatest incident risk is driving Hwy 191. Beware of your safety and public watching the fire.</p>			
8. Attachments (<input checked="" type="checkbox"/> if attached)			
<input type="checkbox"/> Organization List (ICS 203)	<input type="checkbox"/> Medical Plan (ICS 206)	<input type="checkbox"/> Weather Forecast	
<input type="checkbox"/> Assignment List (ICS 204)	<input type="checkbox"/> Incident Map	<input type="checkbox"/> _____	
<input type="checkbox"/> Communications Plan (ICS 205)	<input type="checkbox"/> Traffic Plan	<input type="checkbox"/> _____	
9. PREPARED BY (PLANNING SECTION CHIEF)		10. APPROVED BY (INCIDENT COMMANDER)	

Fire Weather Forecast



DISCUSSION...

RAWS Station at fire

A strong ridge of high pressure will continue to hold firm over the burn site through the remainder of the week. Warm temperatures and dry conditions will prevail. Winds will be light during the overnight and morning hours but afternoon upslope gusts will be possible. A strong cold front will move across the fire site late afternoon Saturday or Saturday evening possibly bringing a period of gusty erratic winds.

.WEDNESDAY...

Sky/weather.....Sunny.
LAL.....1...no thunderstorms.
Max temperature.....70-75.
Min humidity.....23-29 percent.
Wind (20 ft).....
Slope/valley.....South winds 5 to 10 mph. Upslope 10 to 20 mph during the afternoon.
Ridgetop.....West 5 to 10 mph.
Mixing height.....100 ft AGL in the morning...increasing to 10300 ft AGL in the afternoon.
Transport winds.....Southwest 5 to 10 mph.
Haines index.....3.
CWR.....0 percent.

.WEDNESDAY NIGHT...

Sky/weather.....Clear.
LAL.....1...no thunderstorms.
Min temperature.....48-53.
Max humidity.....45-50 percent.
Wind (20 ft).....
Slope/valley.....West winds 5 to 10 mph.
Ridgetop.....Southeast 5 to 10 mph.
Mixing height.....10300 ft AGL in the evening...decreasing to 0 ft AGL overnight.
Transport winds.....North 5 to 10 mph.
CWR.....0 percent.

.THURSDAY...

Sky/weather.....Sunny.
LAL.....1...no thunderstorms.
Max temperature.....74-79.
Min humidity.....20-25 percent.
Wind (20 ft).....
Slope/valley.....Light and variable winds in the morning. Upslope 10 to 20 mph in the afternoon.
Ridgetop.....Northwest 5 to 10 mph.
Mixing height.....0 ft AGL in the morning...increasing to 10900 ft AGL in the afternoon.
Transport winds.....Northeast 5 to 10 mph.
Haines index.....4.
CWR.....0 percent.

.FORECAST DAYS 3 THROUGH 5...

.FRIDAY...

Mostly sunny. Lows 50 to 55. Highs 74 to 79. Southwest winds 5 to 10 mph.

.SATURDAY...

Mostly clear. Lows 42 to 47. Highs 69 to 75. Southwest winds 5 to 10 mph.

.SUNDAY...

Mostly sunny. Lows 40 to 45. Highs 65 to 70. North winds 5 to 10 mph.

FIRE BEHAVIOR FORECAST

FORECAST NUMBER: 10	TYPE OF FIRE: Wildfire
FIRE NAME: Bacon Rind	OPERATIONAL PERIOD: August 8, 2018
DATE ISSUED: August 7, 2018	TIME ISSUED: 1800
UNIT: MT-CGF	SIGNED: <i>1st Todd Erdody</i> , Todd Erdody, LTAN (t)

INPUTS

WEATHER SUMMARY: (For full forecast refer to the Spot Forecast)

Today: Sunny. Max temp: 70-75. Min RH: 23-29 percent. Winds: West 5-20 mph.

Tonight: Clear. Low Temp: 48-53 degrees Max RH: 45-50% Winds: West/Southeast 5 to 10 mph

Thursday: Sunny. Max Temp: 74-79 degrees Min RH: 20-25% Winds: Uplospe/Northwest 10 to 20 mph.

OUTPUTS

FIRE BEHAVIOR

GENERAL:

Growth will be limited to torching with short range spotting (<0.2 mile) and backing fire with low rates of spread. As the warming and drying trend continues to build this week, increasing chances of active fire behavior will be possible every day as ground fuels become more receptive to firebrands.

Mixed conifer (Fuel Models TU5 and TL4): ROS – 0 to 6 ch/hr, FL - 0 to 6 ft

SPECIFIC: Not Applicable


AIR OPERATIONS: Not Applicable

SAFETY

Be cautious around fire-weakened trees and existing snags, especially with outflow winds from thunderstorms.

Fire behavior has been consistently low to moderate but don't be complacent with your situational awareness.

ICS Form 204

1. BRANCH		2. DIVISION/GROUP		ASSIGNMENT LIST					
3. INCIDENT NAME Bacon Rind				4. OPERATIONAL PERIOD DATE _____ TIME 0700-2100					
5. OPERATIONAL PERSONNEL									
OPERATIONS CHIEF		Brown / Hahn		DIVISION/GROUP SUPERVISOR		_____			
BRANCH DIRECTOR		_____		AIR TACTICAL GROUP SUPERVISOR		_____			
6. RESOURCES ASSIGNED TO THIS PERIOD									
STRIKE TEAM/TASK FORCE/ RESOURCE DESIGNATOR	EMT	LEADER	NUMBER PERSONS	TRANS. NEED	Last Day	PICKUP PT./TIME	DROP OFF PT./TIME		
Custer Gallatin C-1	2	Toole / Dillaway	21	N	8/18	0700	2100		
E226 St. Regis E-15		Spencer	2	N	8/16	0700	2100		
E6351 FWS E-18		Silgjord	3	N		0700	2100		
E742 MNDNR E-19		Deurkop	3	N		0700	2100		
7. CONTROL OPERATIONS									
<p>Task: Monitor fire progression and smoke impacts from Hwy 191. Implement holding actions as needed along Hwy 191. Continue implementing fuels projects and providing Lookouts.</p> <p>Purpose: Provide for public and firefighter safety.</p> <p>End State: Ensure efficient traffic flow on Hwy 191.</p>									
8. SPECIAL INSTRUCTIONS									
<ul style="list-style-type: none"> - Coordinate actions with other operational resources and law enforcement as needed. - Monitor Management Action Points as necessary based on observed and modeled fire behavior to emphasize strategic planning and sound risk decision making. - If fire spots east of Hwy 191 suppress with resources on incident. 									
9. DIVISION/GROUP COMMUNICATIONS SUMMARY									
FUNCTION		FREQ.	SYSTEM	CHAN.	FUNCTION		FREQ.	SYSTEM	CHAN.
COMMAND	LOCAL				SUPPORT	LOCAL			
	REPEAT					REPEAT			
DIV./GROUP TACTICAL					GROUND TO AIR				
PREPARED BY (RESOURCE UNIT LEADER)				APPROVED BY (PLANNING SECT. CH.)			DATE	TIME	
									

Link to NIFC FTP maps of Bacon Rind Fire

MEDICAL PLAN	1. Incident Name Bacon Rind	2. Date Prepared 08/05/18	3. Time Prepared 1130	4. Operational Period					
5. Incident Medical Aid Station									
							Paramedics Yes No		
West Yellowstone Clinic			406-646-9441			X			
11 Electric St, West Yellowstone, MT 59758									
6. Transportation									
A. Ambulance Services									
Name		Address		Phone		Paramedics Yes No			
West Yellowstone EMS		West Yellowstone		406-646-7600		X			
Air Evac				Call 911 or Dispatch					
B. Incident Ambulances									
Name		Location					Paramedics Yes No		
7. Hospitals									
Name	Address		Travel Time Air Ground		Phone	Helipad Yes No		Burn Center Yes No	
Big Sky hospital	334 Town Center Ave. Big Sky MT		20m	45m	406-995-6995	x			x
Bozeman Deaconess	915 Highland Blvd. Bozeman MT Level 3 trauma		40m	90m	406-585-1000	X			x
Salt Lake City burn center	Salt Lake City, Utah - Level 1 trauma			5hr	Burn Center 801-581-3050 Emergency 801-581-2292	x		X	
Eastern ID Regional Medical Center	3100 Channing Way Idaho Falls, ID		60m	2hr	208-529-6111	x			x
8. Medical Emergency Procedures									
<ul style="list-style-type: none"> In the event of a Medical Emergency contact your direct Supervisor for the day. They will contact the Division Supervisor/ Operations. Division/ Operations will control scene or delegate the scene to someone qualified on scene. They will determine the Medical need and prepare for evacuation. (See Communication plan) 									
Prepared by (Medical Unit Leader)				10. Reviewed by (Safety Officer) Brian Wilson					

MEDICAL PLAN(ICS 206 WF)

Controlled Unclassified Information//Basic

Medical Incident Report

FOR A NON-EMERGENCY INCIDENT, WORK THROUGH CHAIN OF COMMAND TO REPORT AND TRANSPORT INJURED PERSONNEL AS NECESSARY.

FOR A MEDICAL EMERGENCY: IDENTIFY ON SCENE INCIDENT COMMANDER BY NAME AND POSITION AND ANNOUNCE "MEDICAL EMERGENCY" TO INITIATE RESPONSE FROM IMT COMMUNICATIONS/DISPATCH.

Use the following items to communicate situation to communications/dispatch.

1. CONTACT COMMUNICATIONS / DISPATCH (Verify correct frequency prior to starting report)

Ex: "Communications, Div. Alpha. Stand-by for Emergency Traffic."

2. INCIDENT STATUS: Provide incident summary (including number of patients) and command structure.

Ex: "Communications, I have a Red priority patient, unconscious, struck by a falling tree. Requesting air ambulance to Forest Road 1 at (Lat./Long.) This will be the Trout Meadow Medical, IC is TFLD Jones. EMT Smith is providing medical care."

Severity of Emergency / Transport Priority	<input type="checkbox"/> RED / PRIORITY 1 Life or limb threatening injury or illness. Evacuation need is IMMEDIATE <i>Ex: Unconscious, difficulty breathing, bleeding severely, 2° – 3° burns more than 4 palm sizes, heat stroke, disoriented.</i> <input type="checkbox"/> YELLOW / PRIORITY 2 Serious Injury or illness. Evacuation may be DELAYED if necessary. <i>Ex: Significant trauma, unable to walk, 2° – 3° burns not more than 1-3 palm sizes.</i> <input type="checkbox"/> GREEN / PRIORITY 3 Minor Injury or illness. Non-Emergency transport <i>Ex: Sprains, strains, minor heat-related illness.</i>	
Nature of Injury or Illness & Mechanism of Injury		<i>Brief Summary of Injury or Illness (Ex: Unconscious, Struck by Falling Tree)</i>
Transport Request		<i>Air Ambulance / Short Haul/Hoist Ground Ambulance / Other</i>
Patient Location		<i>Descriptive Location & Lat. / Long. (WGS84)</i>
Incident Name		<i>Geographic Name + "Medical" (Ex: Trout Meadow Medical)</i>
On-Scene Incident Commander		<i>Name of on-scene IC of Incident within an Incident (Ex: TFLD Jones)</i>
Patient Care		<i>Name of Care Provider (Ex: EMT Smith)</i>

3. INITIAL PATIENT ASSESSMENT: Complete this section for each patient as applicable (start with the most severe patient)

Patient Assessment: See IRPG page 106

Treatment:

4. TRANSPORT PLAN:

Evacuation Location (if different): (Descriptive Location (drop point, intersection, etc.) or Lat. / Long.) Patient's ETA to Evacuation Location:

Helispot / Extraction Site Size and Hazards:

5. ADDITIONAL RESOURCES / EQUIPMENT NEEDS:

Example: Paramedic/EMT, Crews, Immobilization Devices, AED, Oxygen, Trauma Bag, IV/Fluid(s), Splints, Rope rescue, Wheeled litter, HAZMAT, Extrication

6. COMMUNICATIONS: Identify State Air/Ground EMS Frequencies and Hospital Contacts as applicable

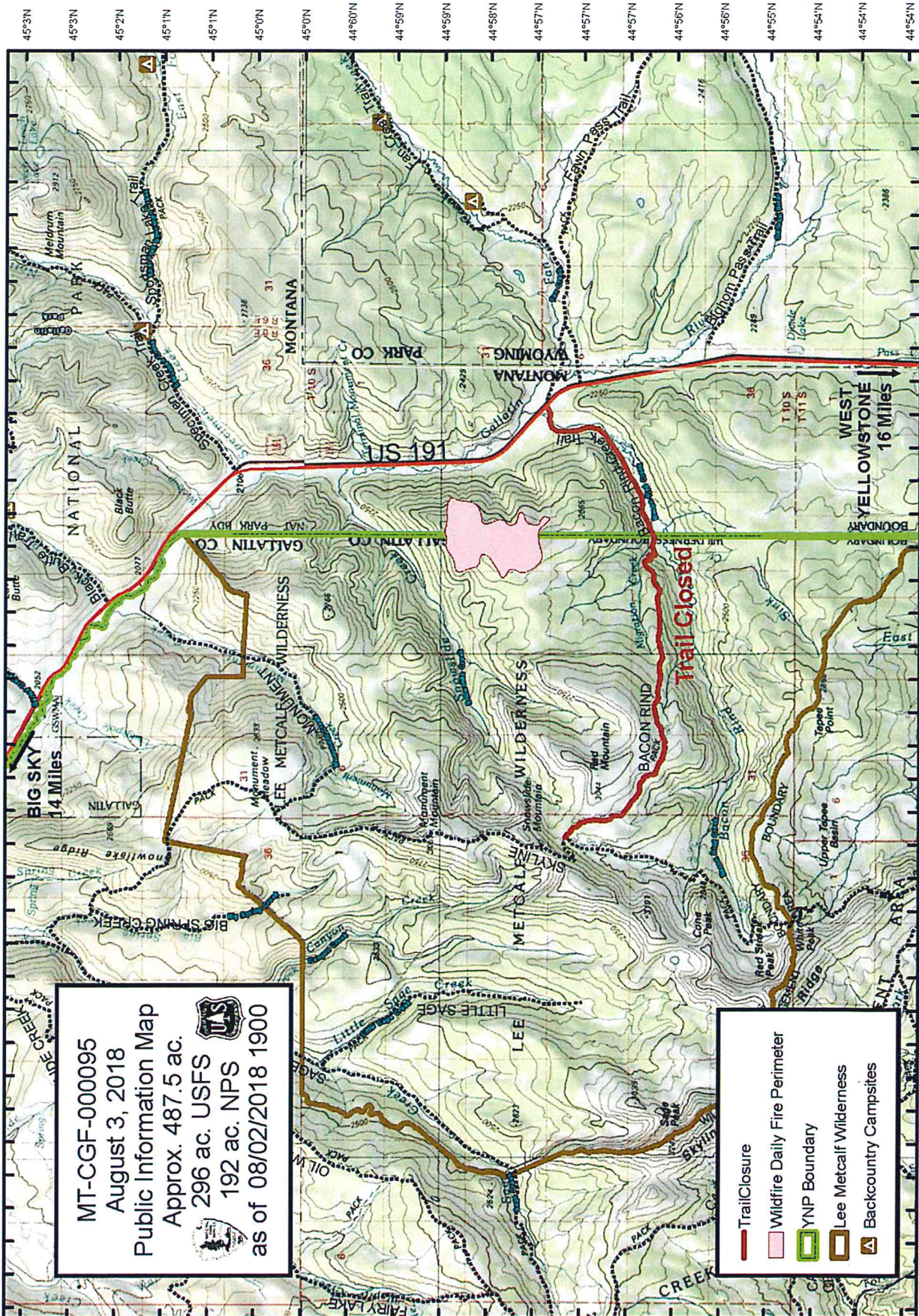
Function	Channel Name/Number	Receive (RX)	Tone/NAC *	Transmit (TX)	Tone/NAC *
COMMAND					
AIR-TO-GRND					
TACTICAL					

7. CONTINGENCY: Considerations: If primary options fail, what actions can be implemented in conjunction with primary evacuation method? Be thinking ahead.

8. ADDITIONAL INFORMATION: Updates/Changes, etc.

REMEMBER: Confirm ETA's of resources ordered. Act according to your level of training. Be Alert. Keep Calm. Think Clearly. Act Decisively.

Bacon Rind Fire



MT-CGF-000095
August 3, 2018
Public Information Map
Approx. 487.5 ac.
296 ac. USFS
192 ac. NPS
as of 08/02/2018 1900

- Trail Closure
- Wildfire Daily Fire Perimeter
- YNP Boundary
- Lee Metcalf Wilderness
- Backcountry Campsites



Coordinate System: NAD 1983 UTM Zone 12N

