

110°32'W 110°31.5'W 110°31'W 110°30.5'W 110°30'W 110°29.5'W 110°29'W

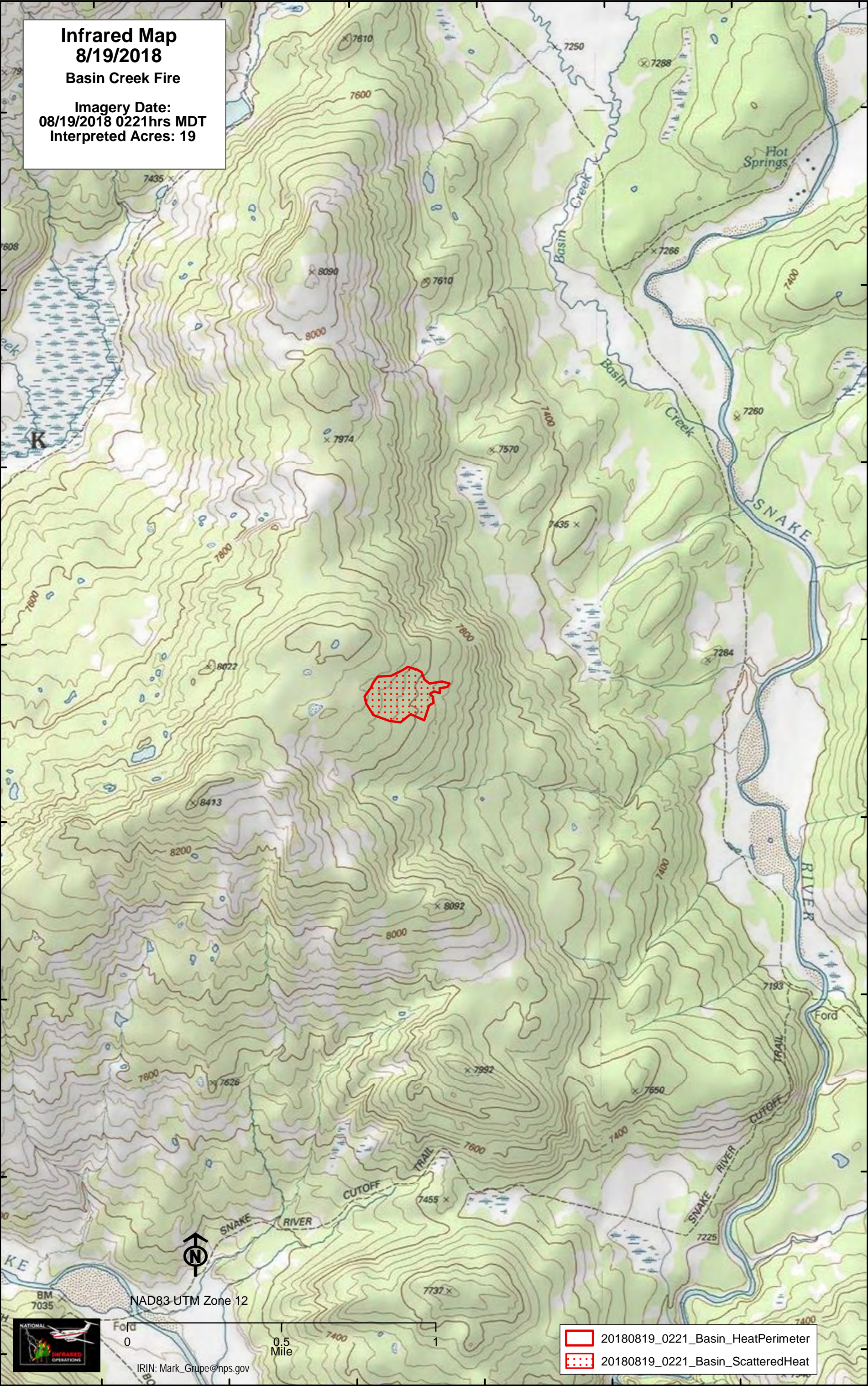
# Infrared Map 8/19/2018

## Basin Creek Fire

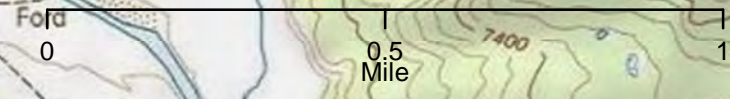
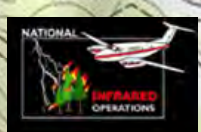
Imagery Date:  
08/19/2018 0221hrs MDT  
Interpreted Acres: 19

44°12.5'N  
44°11'N  
44°11.5'N  
44°11'N  
44°11'N  
44°11'N  
44°10.5'N  
44°10'N  
44°10'N  
44°10.5'N  
44°9.5'N  
44°9'N



44°12.5'N  
44°11'N  
44°11.5'N  
44°11'N  
44°11'N  
44°11'N  
44°10.5'N  
44°10'N  
44°10'N  
44°10.5'N  
44°9.5'N  
44°9'N



NAD83 UTM Zone 12



IRIN: Mark\_Grupe@nps.gov

-  20180819\_0221\_Basin\_HeatPerimeter
-  20180819\_0221\_Basin\_ScatteredHeat

110°32'W 110°31.5'W 110°31'W 110°30.5'W 110°30'W 110°29.5'W