

114°44'0"W

114°43'30"W

114°43'0"W

46°4'0"N

46°4'0"N

46°3'30"N

46°3'30"N

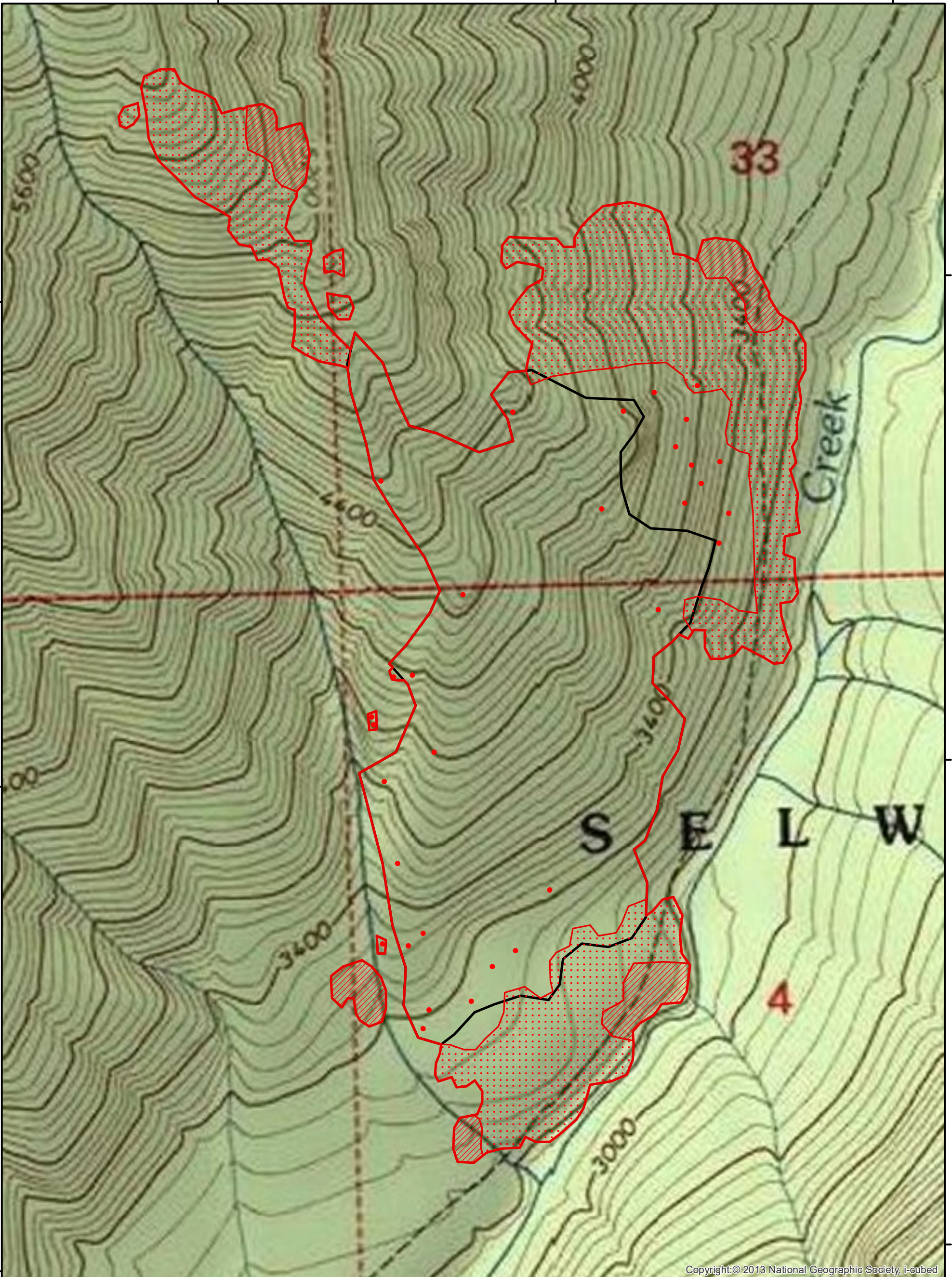
46°3'0"N

46°3'0"N






114°44'0"W

114°43'30"W

114°43'0"W



Copyright: © 2013 National Geographic Society, i-cubed

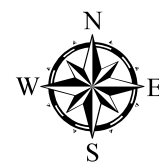
-  Heat Perimeter
-  Intense Heat
-  Scattered Heat
-  Isolated Heat Sources
-  Previous Heat Perimeter

NAD 1983 UTM Zone 11

Bear Creek

ID-NCF-000776

Infrared Heat Sources



0.085 0.0425 0 0.085 0.17 0.255 0.34



IR Interpreter: Buck Buchanan
 Interpreted Acres: 260
 Date: 09/28/2018
 Time Imagery Received: 2350 hrs. MDT