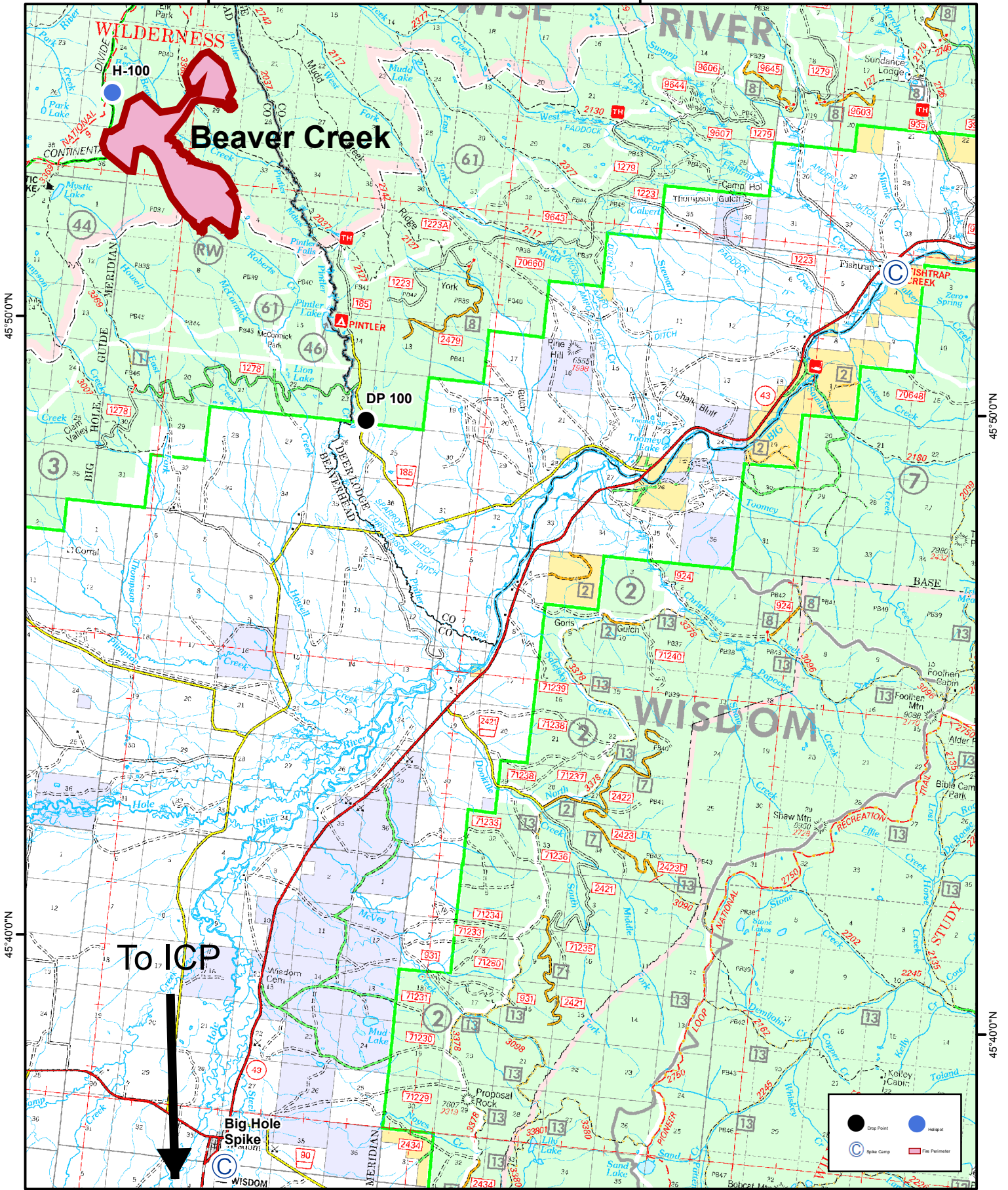


113°30'0"W

113°20'0"W



45°50'0"N

45°50'0"N

45°40'0"N

45°40'0"N

To ICP

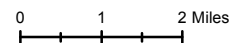


	Drop Point		Heliport
	Spike Camp		Fire Perimeter

Transportation Map  
 August 20, 2018  
 Day



Beaver Creek  
 MT-BDF-0033308



SW AREA  
 INCIDENT MANAGEMENT  
 TEAM 4  
 8/18/18  
 2145

113°30'0"W

113°20'0"W

113°10'0"W