

113°32'W

113°31'W

113°30'W

113°29'W

Infrared Map
Beaver Creek (MT-BDF-003308)
Map Date: 08/19/2018
Imagery Date: 08/19/2018
Imagery Time: 0111 MDT
IR Interpreted Acres: 2,067 acres
IRIN: Tammy Hocut

- Isolated Heat Sources
- Heat Perimeter
- Intense Heat
- Scattered Heat



NAD 1983 UTM Zone 12N



0 0.1 0.2 0.4 0.6 0.8 Miles

45°55'N

45°54'N

45°53'N

45°52'N

45°51'N

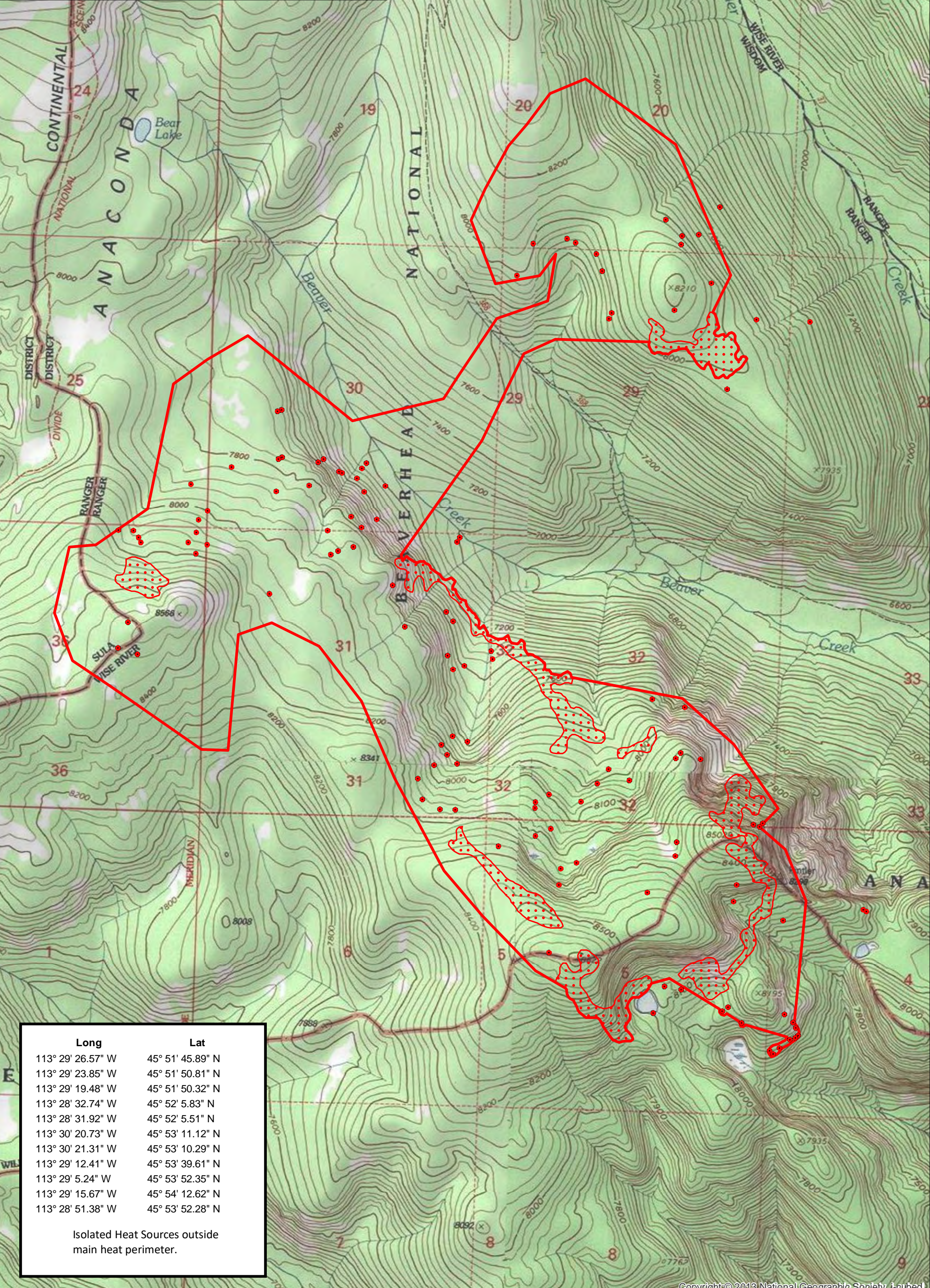
45°55'N

45°54'N

45°53'N

45°52'N

45°51'N



Long	Lat
113° 29' 26.57" W	45° 51' 45.89" N
113° 29' 23.85" W	45° 51' 50.81" N
113° 29' 19.48" W	45° 51' 50.32" N
113° 28' 32.74" W	45° 52' 5.83" N
113° 28' 31.92" W	45° 52' 5.51" N
113° 30' 20.73" W	45° 53' 11.12" N
113° 30' 21.31" W	45° 53' 10.29" N
113° 29' 12.41" W	45° 53' 39.61" N
113° 29' 5.24" W	45° 53' 52.35" N
113° 29' 15.67" W	45° 54' 12.62" N
113° 28' 51.38" W	45° 53' 52.28" N

Isolated Heat Sources outside main heat perimeter.

113°32'W

113°31'W

113°30'W

113°29'W