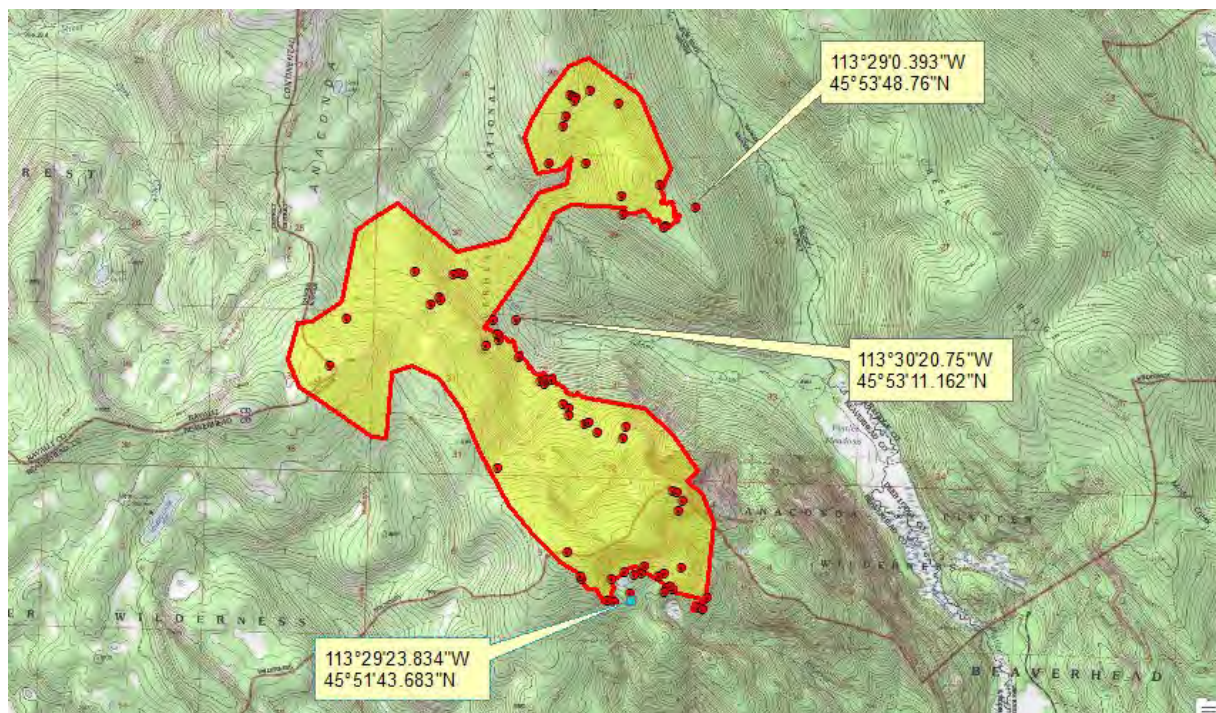


## INFRARED INTERPRETER'S DAILY LOG

<b>Incident Name:</b> Beaver Creek MT-BDF-003308	<b>IR Interpreter:</b> Tammy Hocut thocut@fs.fed.us	<b>Local Dispatch Phone:</b> Kalispell 406-758-5260	<b>Interpreted Size:</b> 2,068 acres <b>Growth last period:</b> 1 acres
<b>Flight Time:</b> 0205 MDT	<b>Interpreter location:</b> Jasper, AR	<b>GACC IR Liaison:</b> Tim Stauffer <b>GACC IR Liaison Phone:</b> 406-529-6366	<b>National Coordinator:</b> Jan Johnson <b>National Coord. Phone:</b> 208-387-5900
<b>Flight Date:</b> 08/24/2018	<b>Interpreter phone:</b> 870-446-5878		
<b>Ordered By:</b> Andrew Vigil 505-934-0781 drewdvigil@gmail.com	<b>A Number:</b> A-24	<b>Aircraft/Scanner System:</b> N144Z/Phoenix	<b>Pilots/Techs:</b> Johnson/Ramsay/Kazimir_Kuenzi
<b>IRIN Comments on imagery:</b> 1 Imagery flight line – good imagery		<b>Weather at time of flight:</b> Clear	<b>Flight Objective:</b> Map heat perimeter, intense heat, scattered heat, and isolated heat
<b>Date and Time Imagery Received by Interpreter:</b> 0241 MDT 8/24/2018		<b>Type of media for final product:</b> PDF maps, zipped shapefiles, IR log, and KMZ files	
<b>Date and Time Products Delivered to Incident:</b> 0415 MDT 8/24/2018		<b>Digital files sent to:</b> <a href="https://ftp.nifc.gov/public/incident_specific_data/n_rockies/2018_fires/2018_BeaverCreek/IR/20180824/">https://ftp.nifc.gov/public/incident_specific_data/n_rockies/2018_fires/2018_BeaverCreek/IR/20180824/</a>	

### Comments /notes on tonight's mission and this interpretation:

Started interpretation with the last IR heat perimeter on 08/22. There were a few isolated heat sources mainly on the east and south side of the fire with several isolated heat sources outside the main heat perimeter.



There was a small area of growth on the south side that made the acreage round up to the next acre.

