

113°33'W 113°32'W 113°31'W 113°30'W 113°29'W

**Infrared Map**  
Beaver Creek (MT-BDF-003308)  
Map Date: 08/24/2018  
Imagery Date: 08/24/2018  
Imagery Time: 0205 MDT  
IR Interpreted Acres: 2,068 acres  
IRIN: Tammy Hocut

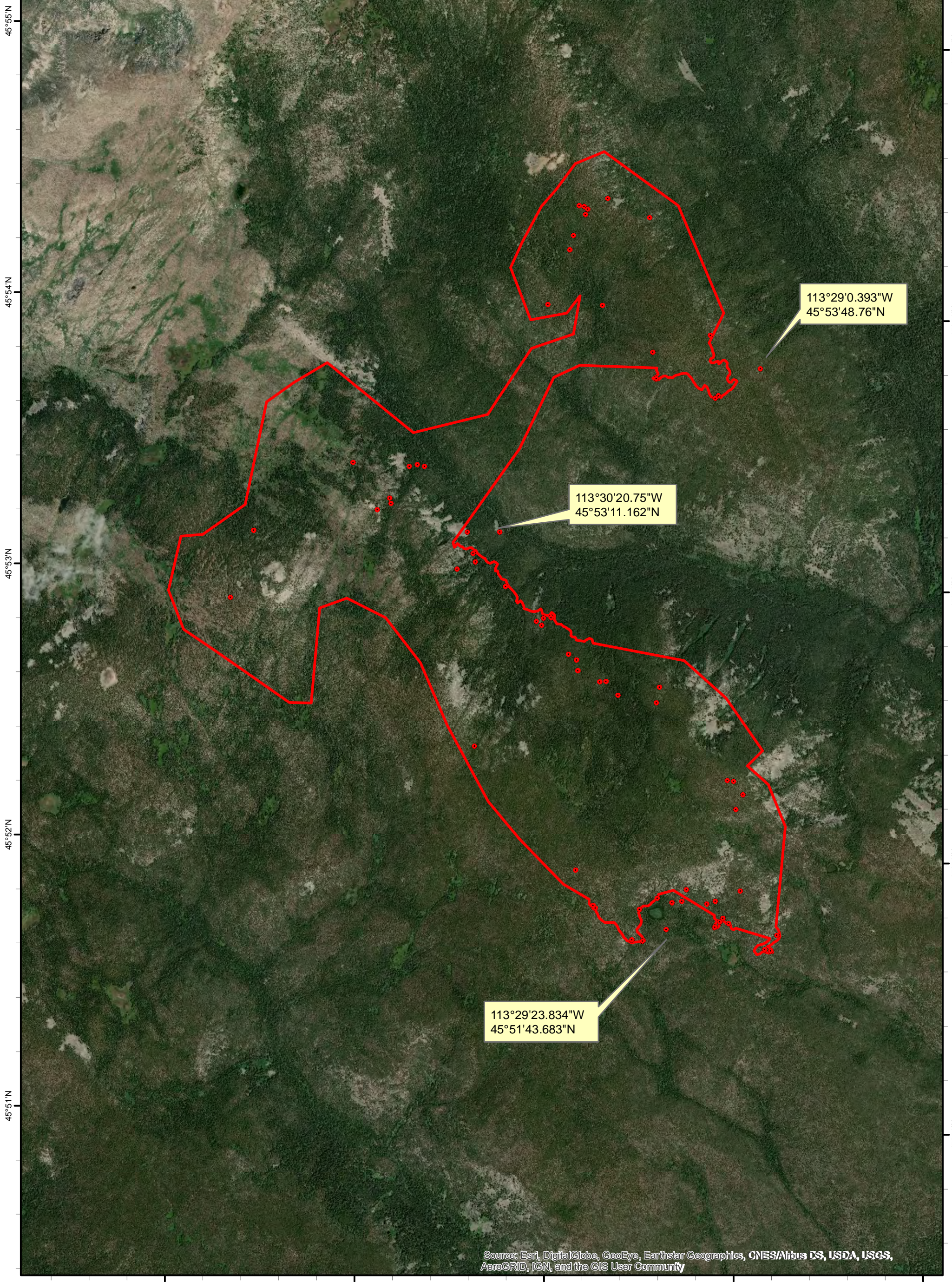
- Isolated Heat Sources
- Heat Perimeter
- Intense Heat
- Scattered Heat



NAD 1983 UTM Zone 12N



0 0.1 0.2 0.4 0.6 0.8 1 Miles



113°29'0.393"W  
45°53'48.76"N

113°30'20.75"W  
45°53'11.162"N

113°29'23.834"W  
45°51'43.683"N

45°55'N  
45°54'N  
45°53'N  
45°52'N  
45°51'N

45°55'N  
45°54'N  
45°53'N  
45°52'N  
45°51'N

113°32'W 113°31'W 113°30'W 113°29'W 113°28'W