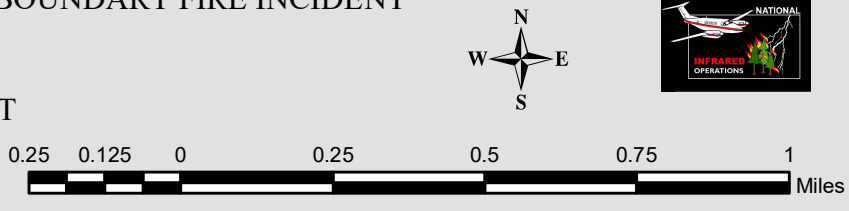



114°10'W 114°00'W 113°59'0"W 113°58'0"W 113°57'0"W 113°56'0"W

BOUNDARY FIRE INCIDENT

Incident#: MT-GNP-000473
 August 29, 2018
 Aquisition: August 29 at 0010 MDT
 IR Interpreted Acres: 2,126
 IRIN: Renee Jacokes-Mancini



0.25 0.125 0 0.25 0.5 0.75 1 Miles



49°00'N

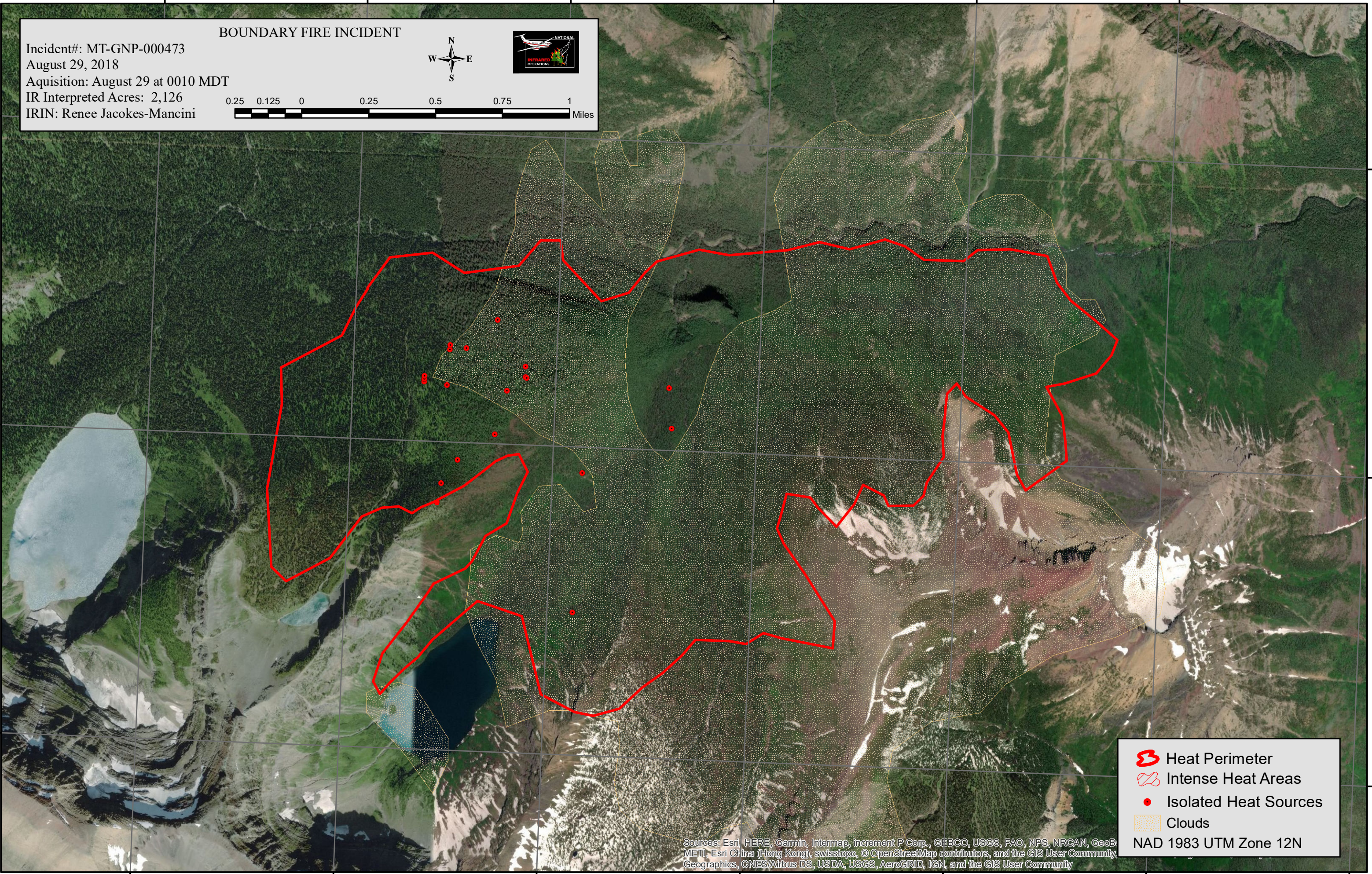
48°59'0"N





48°58'0"N

49°00'N

48°59'0"N

48°58'0"N



-  Heat Perimeter
-  Intense Heat Areas
-  Isolated Heat Sources
-  Clouds

NAD 1983 UTM Zone 12N

Sources: Esri, HERE, Garmin, Intermap, increment P Corp., GEBCO, USGS, FAO, NPS, NRCAN, GeoB, METI, Esri China (Hong Kong), swisstopo, © OpenStreetMap contributors, and the GIS User Community, Geographics, CNES/Airbus DS, USDA, USGS, AeroGRID, IGN, and the GIS User Community

114°10'W 114°00'W 113°59'0"W 113°58'0"W 113°57'0"W 113°56'0"W 113°55'0"W