

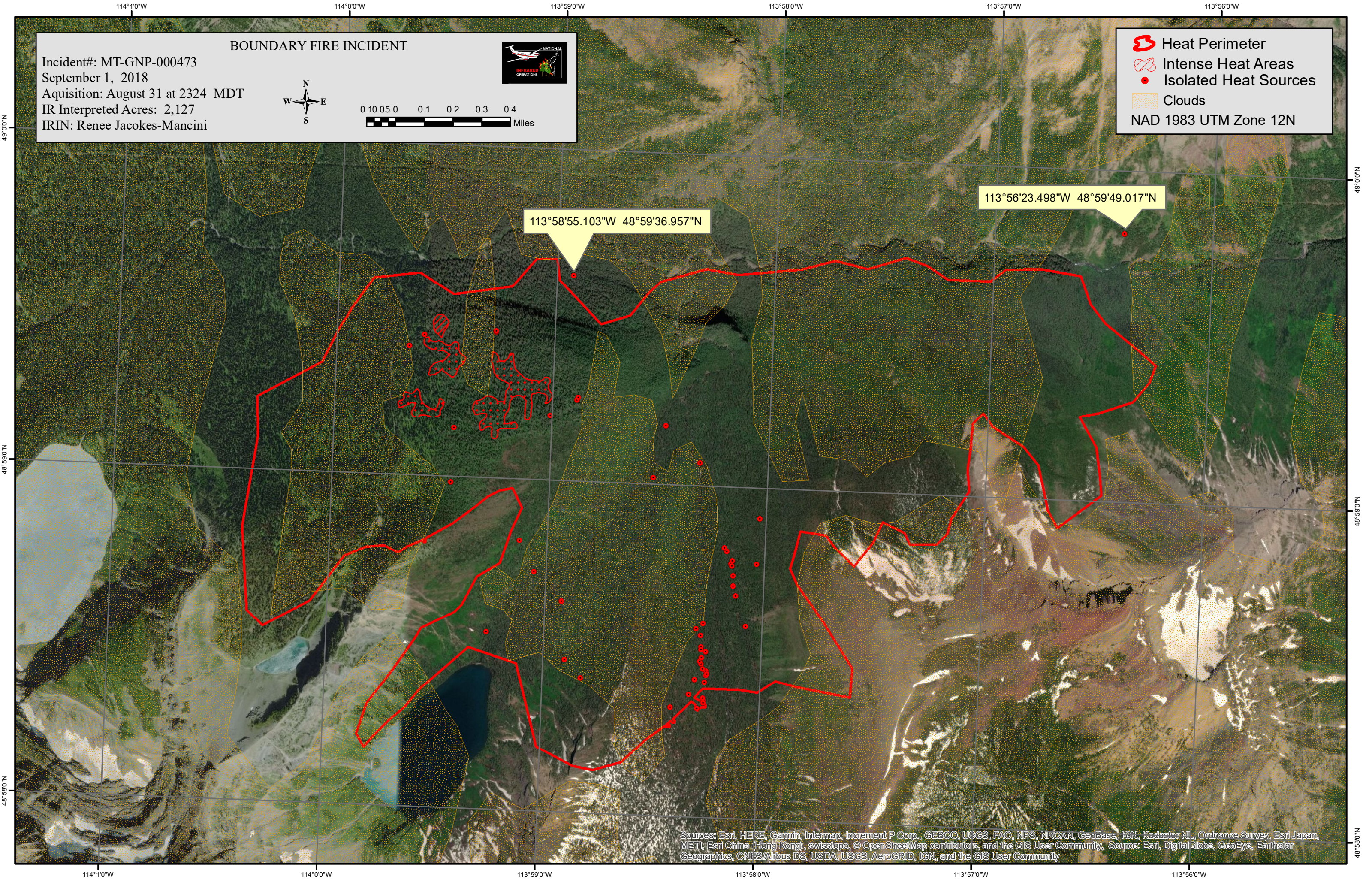
**BOUNDARY FIRE INCIDENT**

Incident#: MT-GNP-000473  
 September 1, 2018  
 Aquisition: August 31 at 2324 MDT  
 IR Interpreted Acres: 2,127  
 IRIN: Renee Jacokes-Mancini



- Heat Perimeter
- Intense Heat Areas
- Isolated Heat Sources
- Clouds

NAD 1983 UTM Zone 12N



113°58'55.103"W 48°59'36.957"N

113°56'23.498"W 48°59'49.017"N

Sources: Esri, HERE, Garmin, Intermap, increment P Corp., GEBCO, USGS, FAO, NPS, NRCAN, GeoBase, IGN, Kadaster NL, Ordnance Survey, Esri Japan, METI, Esri China (Hong Kong), swisstopo, © OpenStreetMap contributors, and the GIS User Community. Source: Esri, DigitalGlobe, GeoEye, Earthstar Geographics, CNES/Airbus DS, USDA, USGS, AeroGRID, IGN, and the GIS User Community