

**Whale Butte**  
MT-FNF-384  
515 ac

**Coal Ridge**  
MT-FNF-377  
280 ac

**Howe Ridge**  
MT-GNP-369  
12,857 ac

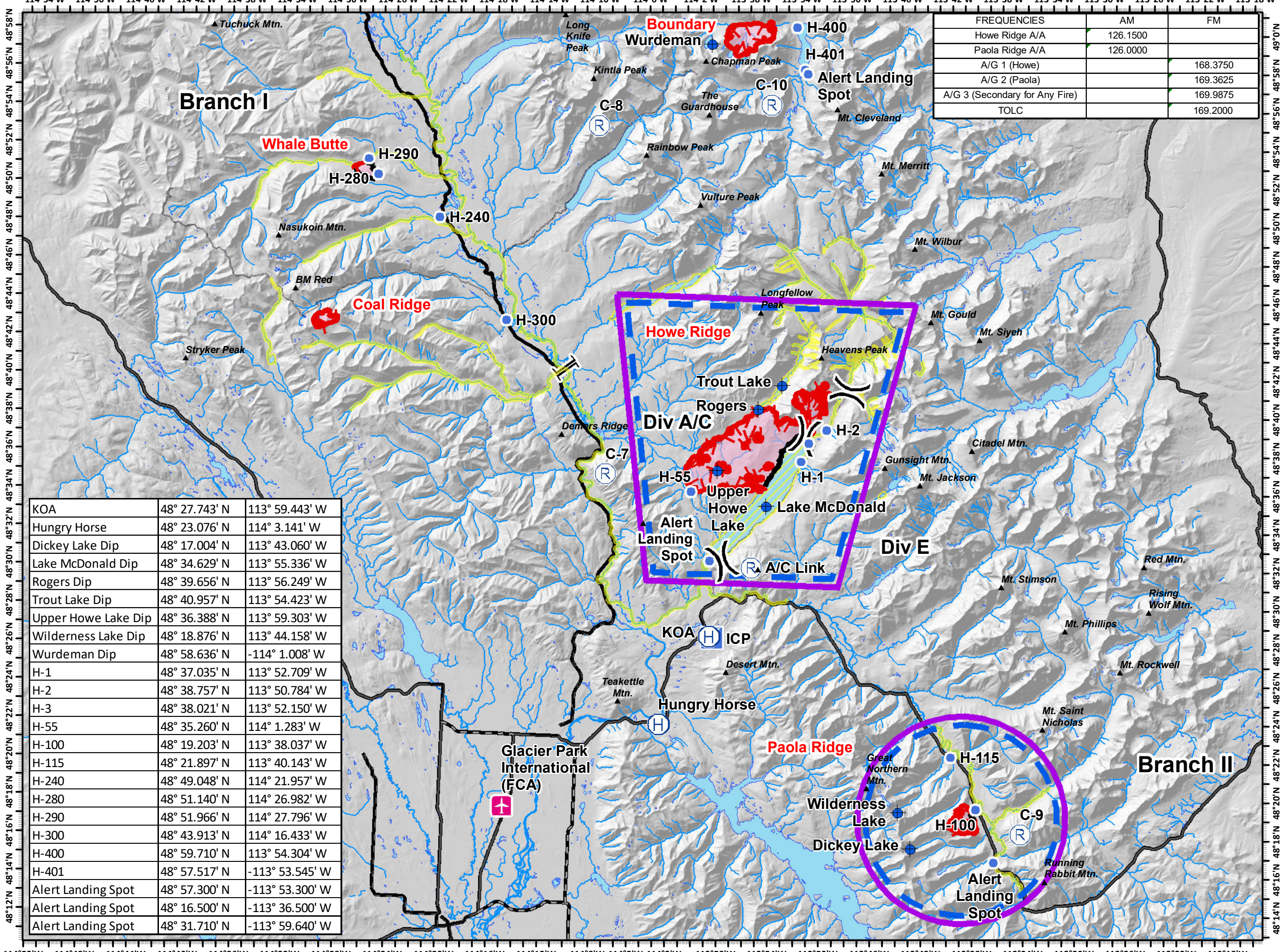
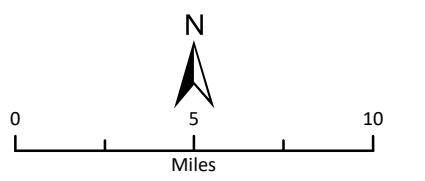
**Paola Ridge**  
MT-FNF-374  
776 ac

**Boundary**  
MT-GNP-473  
1,709 ac

IR Perimeters  
as of 20180902 @ 0100 hrs

**Pilot Map**  
September 5, 2018

- ▲ Peaks
- ⊕ Dip Site
- ⊕ Helibase
- Helispot
- ▣ Incident Command Post
- Ⓡ Repeater
- ⌋ Division Break
- ⌋ Branch Break
- ▬ Uncontrolled Fire Edge
- ▬ Completed Line
- ▬ Temporary Flight Restriction
- ▭ Wildfire Daily Fire Perimeter
- ▨ Retardant Avoidance Area



FREQUENCIES	AM	FM
Howe Ridge A/A	126.1500	
Paola Ridge A/A	126.0000	
A/G 1 (Howe)		168.3750
A/G 2 (Paola)		169.3625
A/G 3 (Secondary for Any Fire)		169.9875
TOLC		169.2000

KOA	48° 27.743' N	113° 59.443' W
Hungry Horse	48° 23.076' N	114° 3.141' W
Dickey Lake Dip	48° 17.004' N	113° 43.060' W
Lake McDonald Dip	48° 34.629' N	113° 55.336' W
Rogers Dip	48° 39.656' N	113° 56.249' W
Trout Lake Dip	48° 40.957' N	113° 54.423' W
Upper Howe Lake Dip	48° 36.388' N	113° 59.303' W
Wilderness Lake Dip	48° 18.876' N	113° 44.158' W
Wurdeman Dip	48° 58.636' N	-114° 1.008' W
H-1	48° 37.035' N	113° 52.709' W
H-2	48° 38.757' N	113° 50.784' W
H-3	48° 38.021' N	113° 52.150' W
H-55	48° 35.260' N	114° 1.283' W
H-100	48° 19.203' N	113° 38.037' W
H-115	48° 21.897' N	113° 40.143' W
H-240	48° 49.048' N	114° 21.957' W
H-280	48° 51.140' N	114° 26.982' W
H-290	48° 51.966' N	114° 27.796' W
H-300	48° 43.913' N	114° 16.433' W
H-400	48° 59.710' N	113° 54.304' W
H-401	48° 57.517' N	-113° 53.545' W
Alert Landing Spot	48° 57.300' N	-113° 53.300' W
Alert Landing Spot	48° 16.500' N	-113° 36.500' W
Alert Landing Spot	48° 31.710' N	-113° 59.640' W

Glacier Park International (FCA)