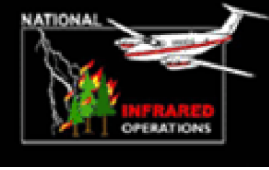



113°13'0"W 113°12'30"W 113°12'0"W 113°11'30"W 113°11'0"W 113°10'30"W 113°10'0"W 113°9'30"W 113°9'0"W 113°8'30"W 113°8'0"W 113°7'30"W 113°7'0"W

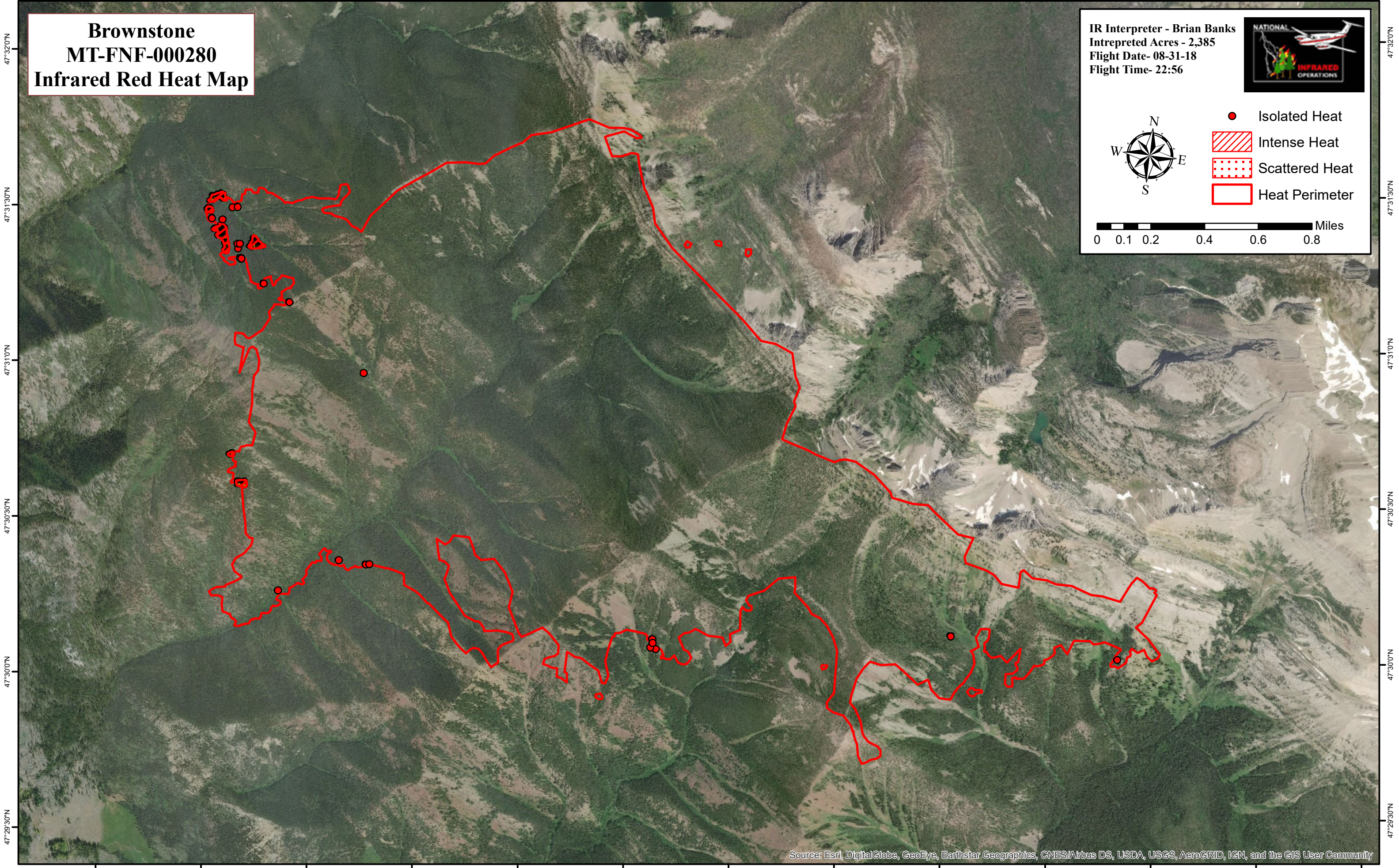
**Brownstone
MT-FNF-000280
Infrared Red Heat Map**

IR Interpreter - Brian Banks
Intepreted Acres - 2,385
Flight Date- 08-31-18
Flight Time- 22:56

- Isolated Heat
- Intense Heat
- Scattered Heat
- Heat Perimeter

0 0.1 0.2 0.4 0.6 0.8 Miles



Source: Esri, DigitalGlobe, GeoEye, Earthstar Geographics, CNES/Airbus DS, USDA, USGS, AeroGRID, IGN, and the GIS User Community

113°13'0"W 113°12'30"W 113°12'0"W 113°11'30"W 113°11'0"W 113°10'30"W 113°10'0"W 113°9'30"W 113°9'0"W 113°8'30"W 113°8'0"W 113°7'30"W 113°7'0"W