

**Whale Butte** MT-FNF-384  
 Approx 489 acres  
 8/24 2233hrs

**Howe Ridge** MT-GNP-369  
 Approx 12,420 acres  
 8/24 2222hrs

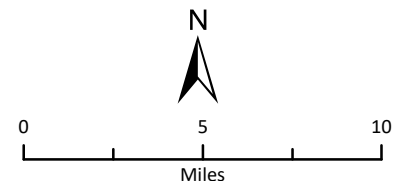
**Coal Ridge** MT-FNF-377  
 Approx 280 acres  
 8/24 2233hrs

**Paola Ridge** MT-FNF-374  
 Approx 712 acres  
 8/24 2216hrs

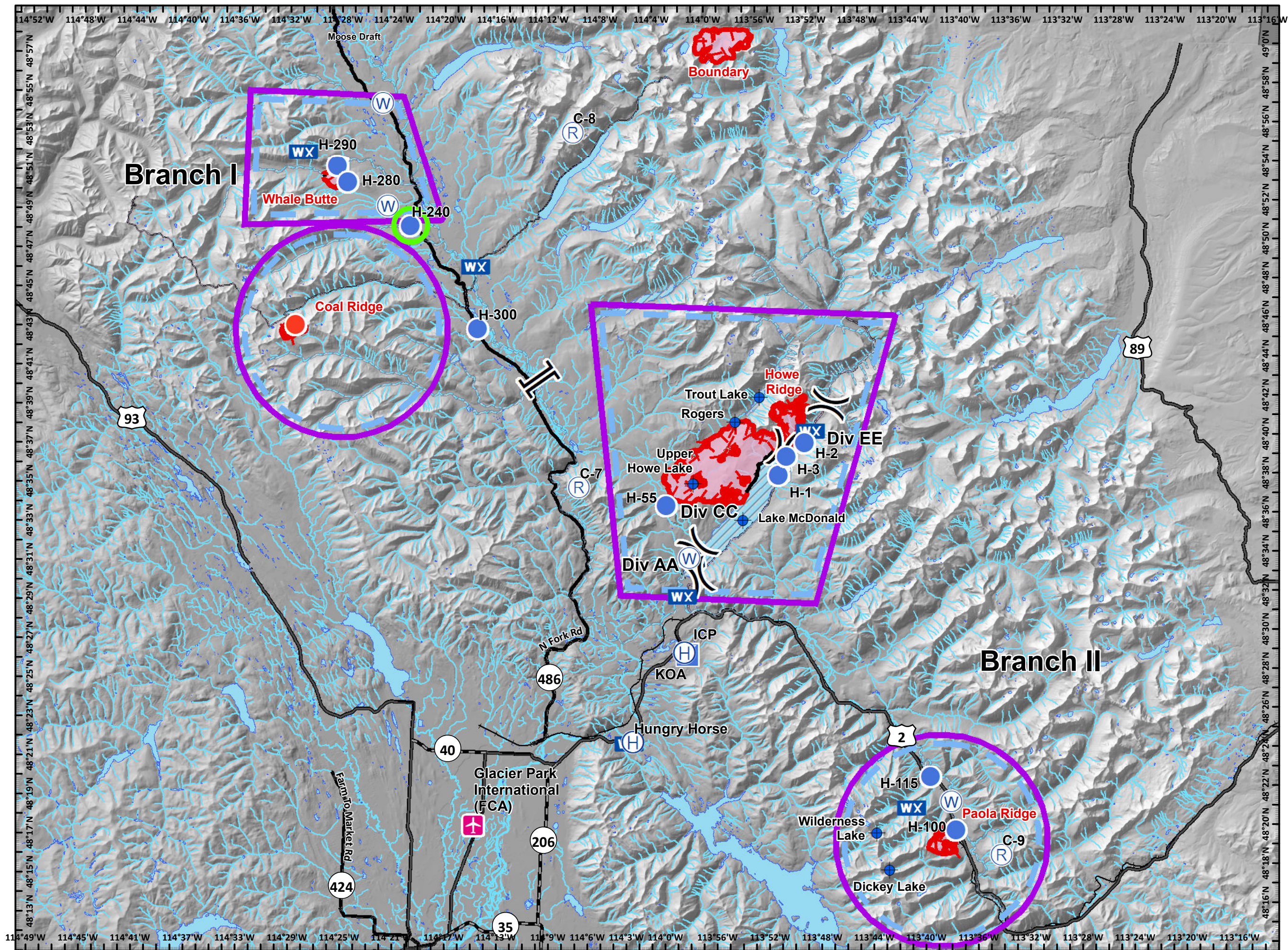
**Boundary** MT-GNP-473  
 Approx 2125 acres  
 8/24 1000hrs

**Pilot Map**  
 08/26/2018 Day

- Airstrip or Airport
- Dip Site
- Helibase
- Helispot
- Hot Spot
- Incident Command Post
- Mobile Weather Unit
- Repeater
- Water Source
- Water Tank
- Division Break
- Branch Break
- UAS ROZ - 1 mi buffer of H-240
- Uncontrolled Fire Edge
- Completed Line
- Temporary Flight Restriction
- Wildfire Daily Fire Perimeter
- Value at Risk
- Retardant Avoidance Area
- Waterbody
- Streams



Coordinate System: NAD 1983 UTM Zone 12N  
 Datum: North American 1983  
 Prepared by: Admin  
 8/25/2018 2258 hrs



H-290	48° 51.966' N	114° 27.796' W
H-280 Helispot	48° 51.140' N	114° 26.982' W
H-240 Helispot	48° 49.048' N	114° 21.957' W
H-300 Helispot	48° 43.913' N	114° 16.433' W
H-1 Helispot	48° 37.035' N	113° 52.709' W
H-2 Helispot	48° 38.757' N	113° 50.784' W
H-3 Helispot	48° 38.021' N	113° 52.150' W
H-55 Helispot	48° 35.260' N	114° 1.283' W
Essex Pit Helispot (H-100)	48° 19.203' N	113° 38.037' W
Paola Ridge Helispot (H-115)	48° 21.897' N	113° 40.143' W
Hungry Horse Helibase	48° 23.076' N	114° 3.141' W
KOA Helibase	48° 27.743' N	113° 59.443' W
Glacier Park International (FCA)	48° 18.462' N	114° 15.150' W
Water Source	48° 20.667' N	113° 38.490' W
Water Source	48° 55.275' N	114° 24.526' W
Water Source	48° 50.033' N	114° 23.789' W
Water Source	48° 20.667' N	113° 38.490' W
Dip Site Trout Lake	48° 40.957' N	113° 54.423' W
Dip Site Upper Howe Lake	48° 36.388' N	113° 59.303' W
Dip Site Rogers Lake	48° 39.656' N	113° 56.249' W
Dip Site Wilderness Lake	48° 18.876' N	113° 44.158' W
Dip Site Dickey Lake	48° 17.004' N	113° 43.060' W
Dip Site Lake McDonald	48° 34.629' N	113° 55.336' W
Repeater C-7	48° 36.024' N	114° 8.066' W
Repeater C-8	48° 54.188' N	114° 9.681' W
Repeater C-9	48° 18.001' N	113° 34.487' W
ICP	48° 27.641' N	113° 59.202' W

FREQUENCIES	AM	FM
Howe Ridge A/A	126.1500	
Paola Ridge A/A	126.0000	
Coal Ridge A/A	118.0000	
Whale Butte A/A	120.1750	
A/G 1 (Howe)	168.3750	
A/G 2 (Paola)	169.3625	
A/G 3 (Coal)	169.9875	
A/G 4 (Whale Butte)	170.5500	
Air Guard	168.6250	110.9 RX/TX

DP-300	48° 48.928' N	114° 23.994' W
DP-305	48° 49.073' N	114° 21.574' W
DP-315	48° 46.176' N	114° 20.964' W
DP-320	48° 45.387' N	114° 18.556' W
DP-200	48° 51.659' N	114° 27.089' W
DP-202	48° 52.512' N	114° 26.766' W
DP-205	48° 51.725' N	114° 25.970' W
DP-210	48° 52.324' N	114° 22.610' W
DP-215	48° 51.241' N	114° 22.004' W
DP-220	48° 50.745' N	114° 24.716' W
DP-223	48° 50.913' N	114° 21.674' W
DP-225	48° 50.386' N	114° 25.403' W
DP-230	48° 49.957' N	114° 25.036' W
DP-235	48° 49.662' N	114° 21.812' W
DP-265	48° 50.981' N	114° 28.488' W
DP-1	48° 38.096' N	113° 51.811' W
DP-2	48° 38.485' N	113° 51.403' W
DP-3	48° 40.763' N	113° 49.160' W
DP-4	48° 37.101' N	113° 52.465' W
DP-5	48° 36.375' N	113° 53.083' W
DP-23	48° 31.718' N	113° 59.798' W
DP-28	48° 32.870' N	113° 59.131' W
DP-30	48° 33.097' N	113° 58.892' W
DP-32	48° 33.130' N	113° 59.134' W
DP-36	48° 33.154' N	113° 59.342' W
DP-45	48° 34.152' N	113° 59.940' W
DP-60	48° 36.552' N	114° 1.671' W
DP-65	48° 37.462' N	114° 1.671' W
DP-100	48° 19.126' N	113° 38.208' W
DP-110	48° 21.930' N	113° 40.757' W
DP-115	48° 21.897' N	113° 40.105' W
DP-130	48° 18.617' N	113° 37.848' W
DP-140	48° 18.273' N	113° 37.388' W
DP-150	48° 18.100' N	113° 37.480' W
DP-155	48° 18.065' N	113° 37.242' W
DP-165	48° 17.852' N	113° 37.078' W
DP-250	48° 50.852' N	114° 27.231' W
DP-290	48° 51.357' N	114° 27.373' W