

HOWE RIDGE
(MT-GNP-369)
Approx 12,435 acres
08/26/18 @ 1751 hrs

COAL RIDGE
(MT-FNF-377)
Approx 280 acres
08/24/18 @ 2233 hrs

PAOLA RIDGE
(MT-FNF-374)
Approx 712 acres
08/24/18 @ 2216 hrs

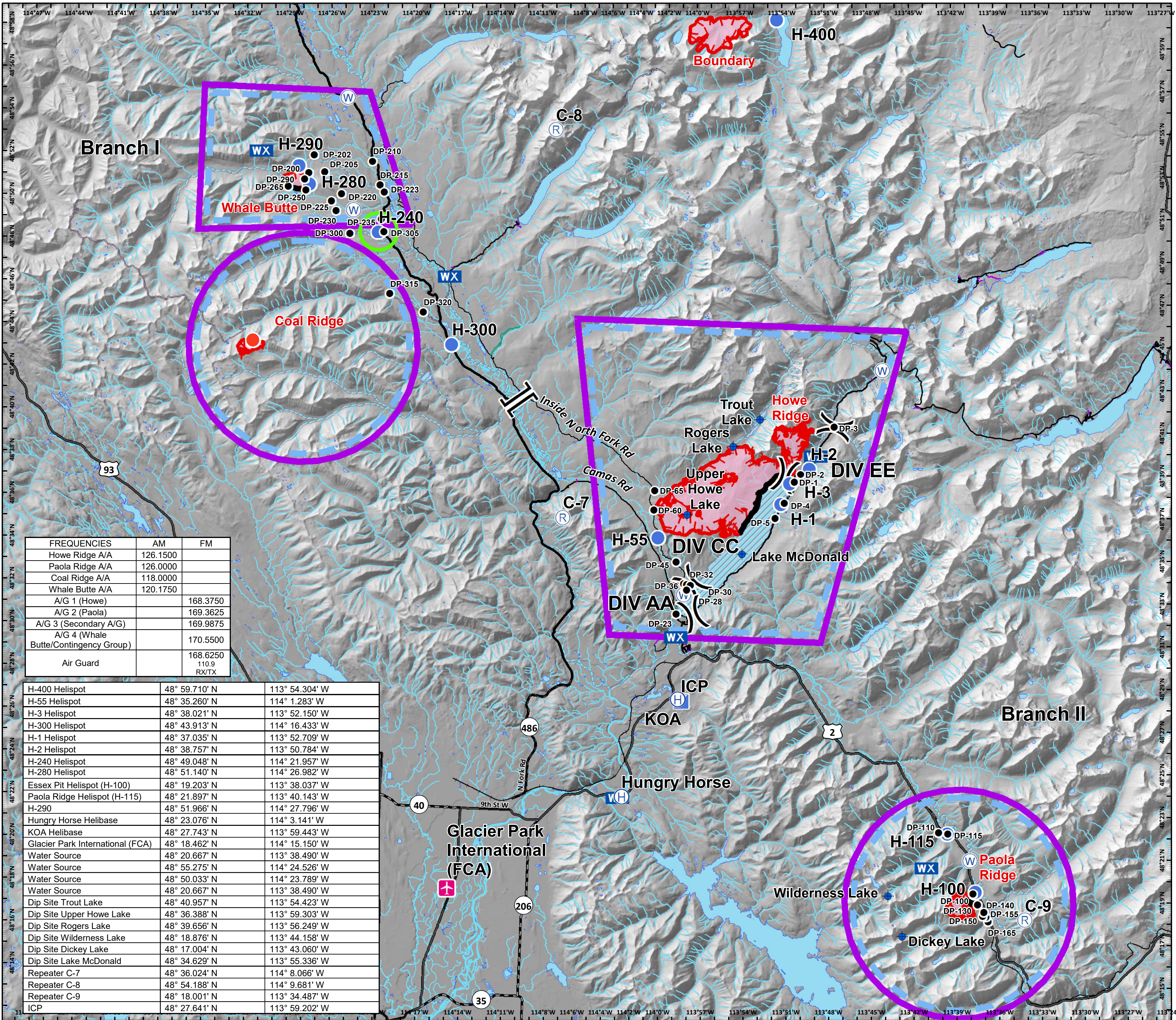
WHALE BUTTE
(MT-FNF-384)
Approx 510 acres
08/26/18 @ 1751 hrs

BOUNDARY
(MT-GNP-473)
Approx 2125 acres
08/24/18 @ 1000hrs

Air Ops
8/29/2018 Day

- Airstrip or Airport
- Dip Site
- Drop Point
- Helibase
- Helispot
- Hot Spot
- Incident Command Post
- Mobile Weather Unit
- Repeater
- Water Source
- Division Break
- Branch Break
- UAS ROZ - (1 mi buffer of H-240)
- Uncontrolled Fire Edge
- Completed Line
- Temporary Flight Restriction
- Wildfire Daily Fire Perimeter
- Value at Risk
- Retardant Avoidance Area

0 2 4 Miles



FREQUENCIES	AM	FM
Howe Ridge A/A	126.1500	
Paola Ridge A/A	126.0000	
Coal Ridge A/A	118.0000	
Whale Butte A/A	120.1750	
A/G 1 (Howe)		168.3750
A/G 2 (Paola)		169.3625
A/G 3 (Secondary A/G)		169.9875
A/G 4 (Whale Butte/Contingency Group)		170.5500
Air Guard		168.6250 110.9 RX/TX

H-400 Helispot	48° 59.710' N	113° 54.304' W
H-55 Helispot	48° 35.260' N	114° 1.283' W
H-3 Helispot	48° 38.021' N	113° 52.150' W
H-300 Helispot	48° 43.913' N	114° 16.433' W
H-1 Helispot	48° 37.035' N	113° 52.709' W
H-2 Helispot	48° 38.757' N	113° 50.784' W
H-240 Helispot	48° 49.048' N	114° 21.957' W
H-280 Helispot	48° 51.140' N	114° 26.982' W
Essex Pit Helispot (H-100)	48° 19.203' N	113° 38.037' W
Paola Ridge Helispot (H-115)	48° 21.897' N	113° 40.143' W
H-290	48° 51.966' N	114° 27.796' W
Hungry Horse Helibase	48° 23.076' N	114° 3.141' W
KOA Helibase	48° 27.743' N	113° 59.443' W
Glacier Park International (FCA)	48° 18.462' N	114° 15.150' W
Water Source	48° 20.667' N	113° 38.490' W
Water Source	48° 55.275' N	114° 24.526' W
Water Source	48° 50.033' N	114° 23.789' W
Water Source	48° 20.667' N	113° 38.490' W
Dip Site Trout Lake	48° 40.957' N	113° 54.423' W
Dip Site Upper Howe Lake	48° 36.388' N	113° 59.303' W
Dip Site Rogers Lake	48° 39.656' N	113° 56.249' W
Dip Site Wilderness Lake	48° 18.876' N	113° 44.158' W
Dip Site Dickey Lake	48° 17.004' N	113° 43.060' W
Dip Site Lake McDonald	48° 34.629' N	113° 55.336' W
Repeater C-7	48° 36.024' N	114° 8.066' W
Repeater C-8	48° 54.188' N	114° 9.681' W
Repeater C-9	48° 18.001' N	113° 34.487' W
ICP	48° 27.641' N	113° 59.202' W

Coordinate System: NAD 1983 UTM Zone 12N
Datum: North American 1983
Prepared by: Admin
8/28/2018 2248 hrs