

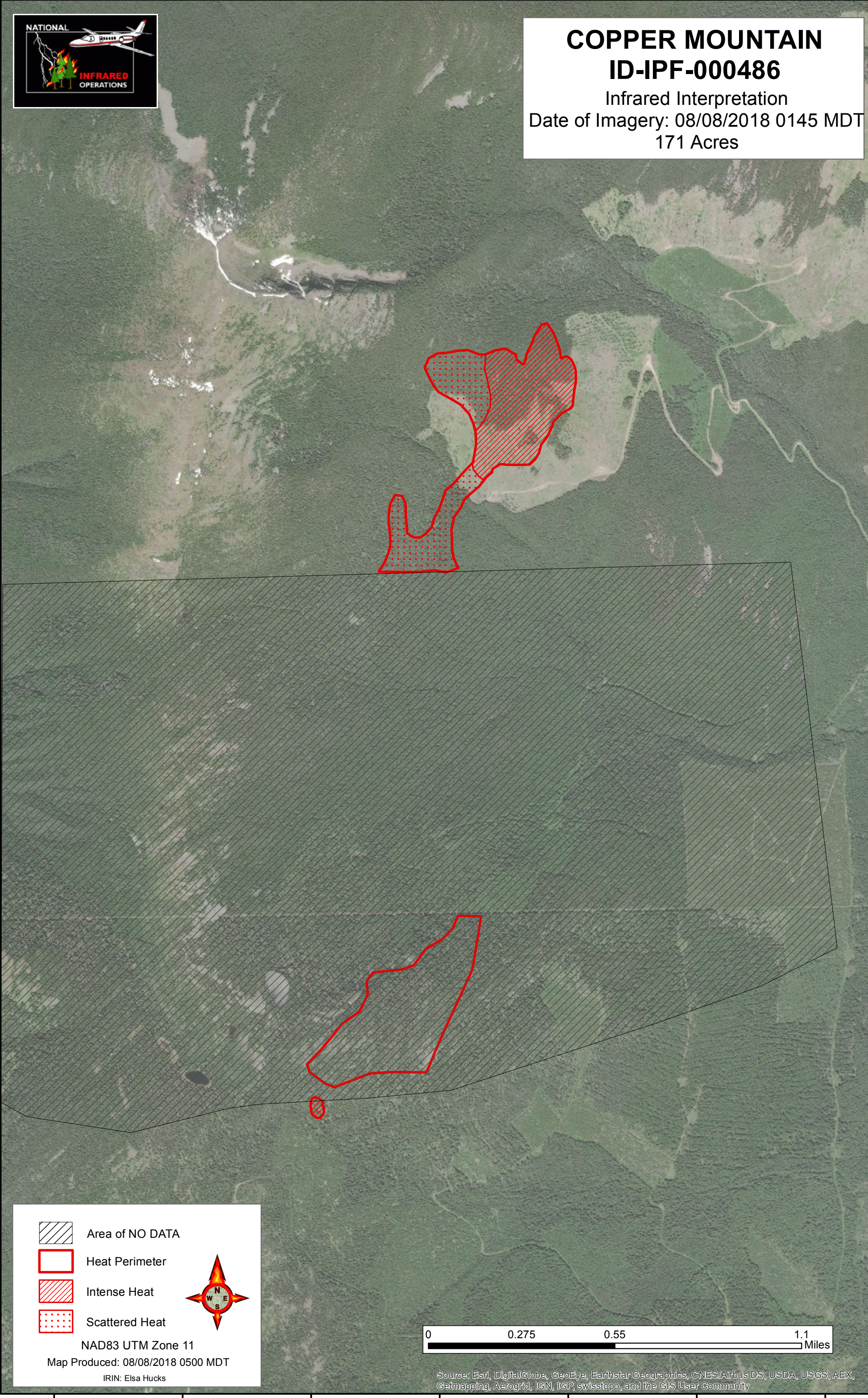
116°7'0"W 116°6'30"W 116°6'0"W 116°5'30"W 116°5'0"W 116°4'30"W 116°4'0"W



**COPPER MOUNTAIN**  
**ID-IPF-000486**  
Infrared Interpretation  
Date of Imagery: 08/08/2018 0145 MDT  
171 Acres

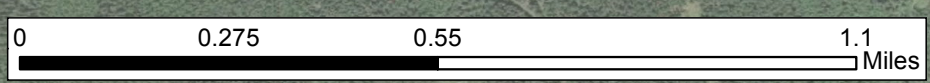
49°2'0"N  
49°1'30"N  
49°1'0"N  
49°0'30"N  
49°0'0"N  
48°59'30"N  
48°59'0"N

49°2'0"N  
49°1'30"N  
49°1'0"N  
49°0'30"N  
49°0'0"N  
48°59'30"N  
48°59'0"N



|  |                 |
|--|-----------------|
|  | Area of NO DATA |
|  | Heat Perimeter  |
|  | Intense Heat    |
|  | Scattered Heat  |

NAD83 UTM Zone 11  
Map Produced: 08/08/2018 0500 MDT  
IRIN: Elsa Hucks



Source: Esri, DigitalGlobe, GeoEye, Earthstar Geographics, CNES/Airbus DS, USDA, USGS, AEX, Getmapping, Aerogrid, IGN, IGP, swisstopo, and the GIS User Community

116°7'0"W 116°6'30"W 116°6'0"W 116°5'30"W 116°5'0"W 116°4'30"W 116°4'0"W