

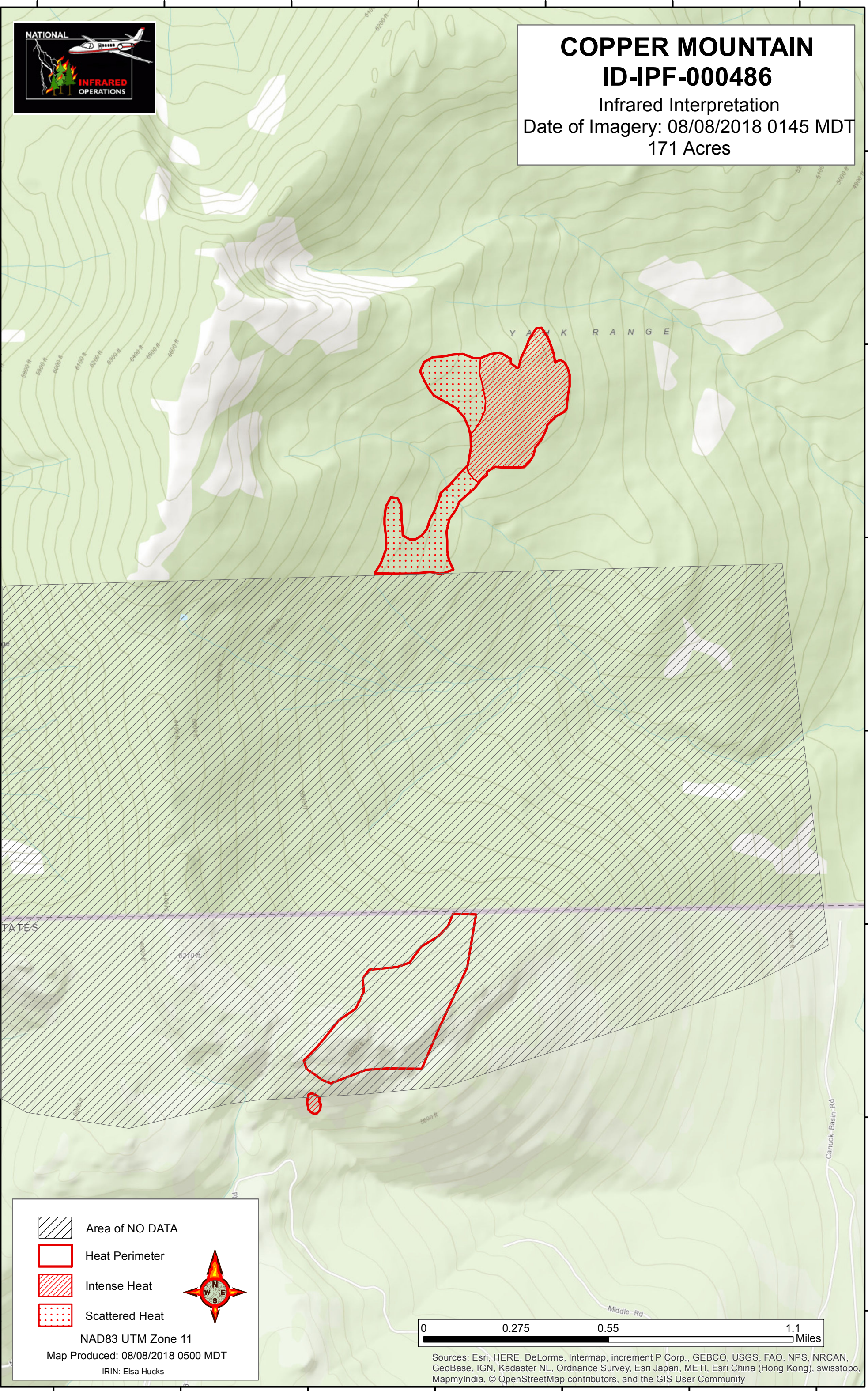
116°7'0"W 116°6'30"W 116°6'0"W 116°5'30"W 116°5'0"W 116°4'30"W 116°4'0"W



COPPER MOUNTAIN
ID-IPF-000486
Infrared Interpretation
Date of Imagery: 08/08/2018 0145 MDT
171 Acres

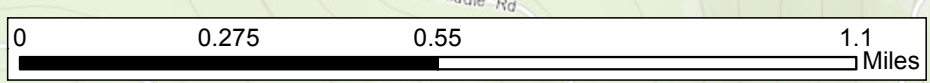
49°2'0"N
49°1'30"N
49°1'0"N
49°0'30"N
49°0'0"N
48°59'30"N
48°59'0"N

49°2'0"N
49°1'30"N
49°1'0"N
49°0'30"N
49°0'0"N
48°59'30"N
48°59'0"N



	Area of NO DATA
	Heat Perimeter
	Intense Heat
	Scattered Heat

NAD83 UTM Zone 11
Map Produced: 08/08/2018 0500 MDT
IRIN: Elsa Hucks



Sources: Esri, HERE, DeLorme, Intermap, increment P Corp., GEBCO, USGS, FAO, NPS, NRCAN, GeoBase, IGN, Kadaster NL, Ordnance Survey, Esri Japan, METI, Esri China (Hong Kong), swisstopo, MapmyIndia, © OpenStreetMap contributors, and the GIS User Community

116°7'0"W 116°6'30"W 116°6'0"W 116°5'30"W 116°5'0"W 116°4'30"W 116°4'0"W