

116°6'W

116°5'W

Copper Mtn Fire

Heat Acres: 252

ID-IPF-000486

Infrared Interpretation

Imagery Date:

2018/08/20 2134 Hrs



1:9,462



49°0'N




49°0'N

CANADA
UNITED STATES

Copper Creek

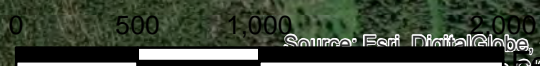
48°59'N

48°59'N

-  Heat Perimeter
-  Intense Heat Areas
-  Isolated Heat Sources

NAD 1983 UTM Zone 11N

IRIN: Kyle Felker
Map produced:
8/21/2018 0423 hrs



Source: Esri, DigitalGlobe, GeoEye, Earthstar Geographics, CNES/Airbus DS, USDA, USGS, AeroGRID, IGN, SIA, User Community, Esri, HERE, DeLorme, TomTom, MapmyIndia, © 2018 OpenStreetMap contributors, and the GIS user community

116°6'W

116°5'W