

116°6'W

116°5'W

Copper Mtn Fire

Heat Acres: 252

ID-IPF-000486

Infrared Interpretation

Imagery Date:

2018/08/20 2134 Hrs



1:9,462



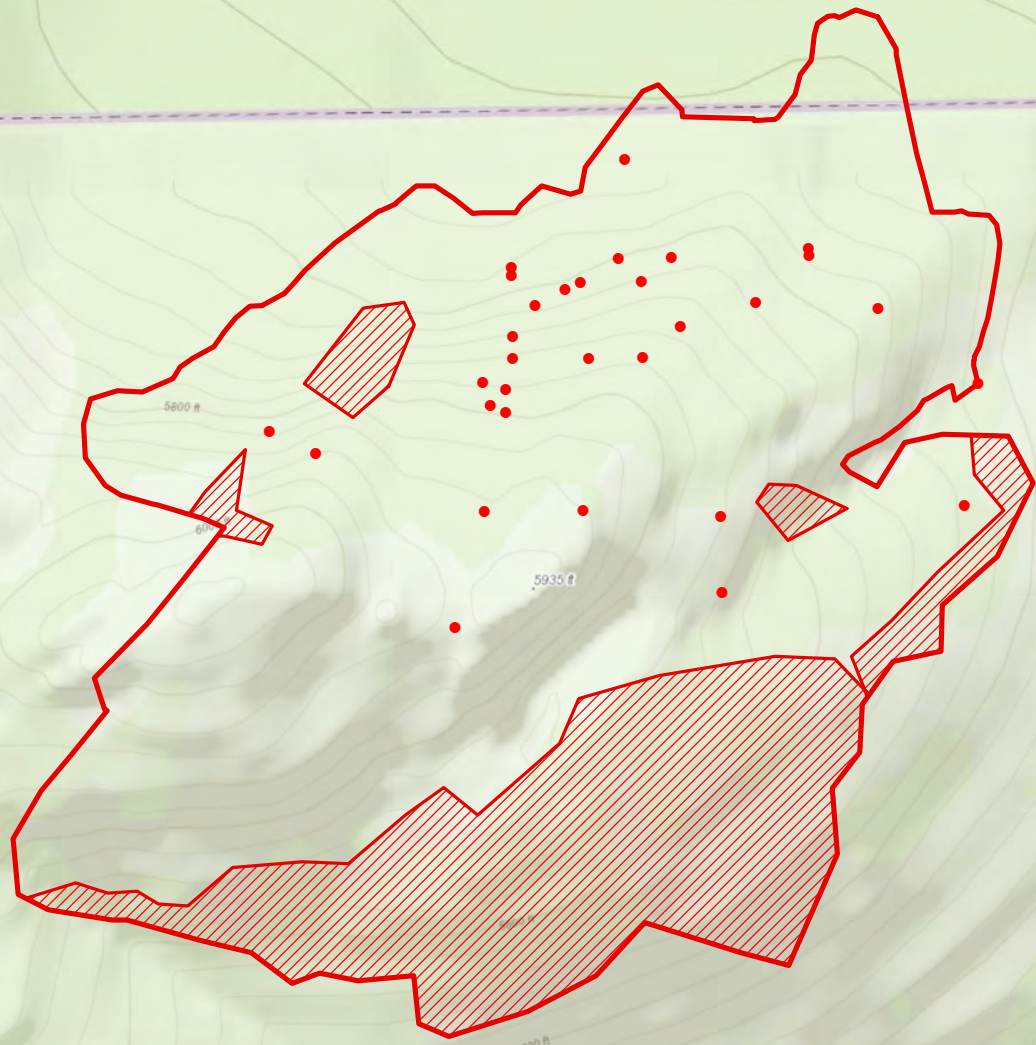
49°0'N

49°0'N

UNITED STATES

48°59'N

48°59'N



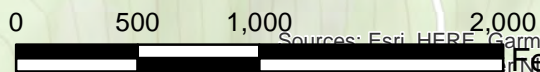
Heat Perimeter

Intense Heat Areas

Isolated Heat Sources

NAD 1983 UTM Zone 11N

IRIN: Kyle Felker
Map produced:
8/21/2018 0423 hrs



Sources: Esri, HERE, Garmin, Intermap, increment P Corp., GEBCO, USGS, FAO, NPS, NRCAN, Ordnance Survey, Esri Japan, METI, Esri China (Hong Kong), swisstopo, OpenStreetMap contributors, and the GIS User Community

116°6'W

116°5'W