

**Copper Mtn Fire**  
Heat Acres: 385  
ID-IPF-000486  
Infrared Interpretation  
Imagery Date:  
2018/08/22 0106 Hrs



49°1'N

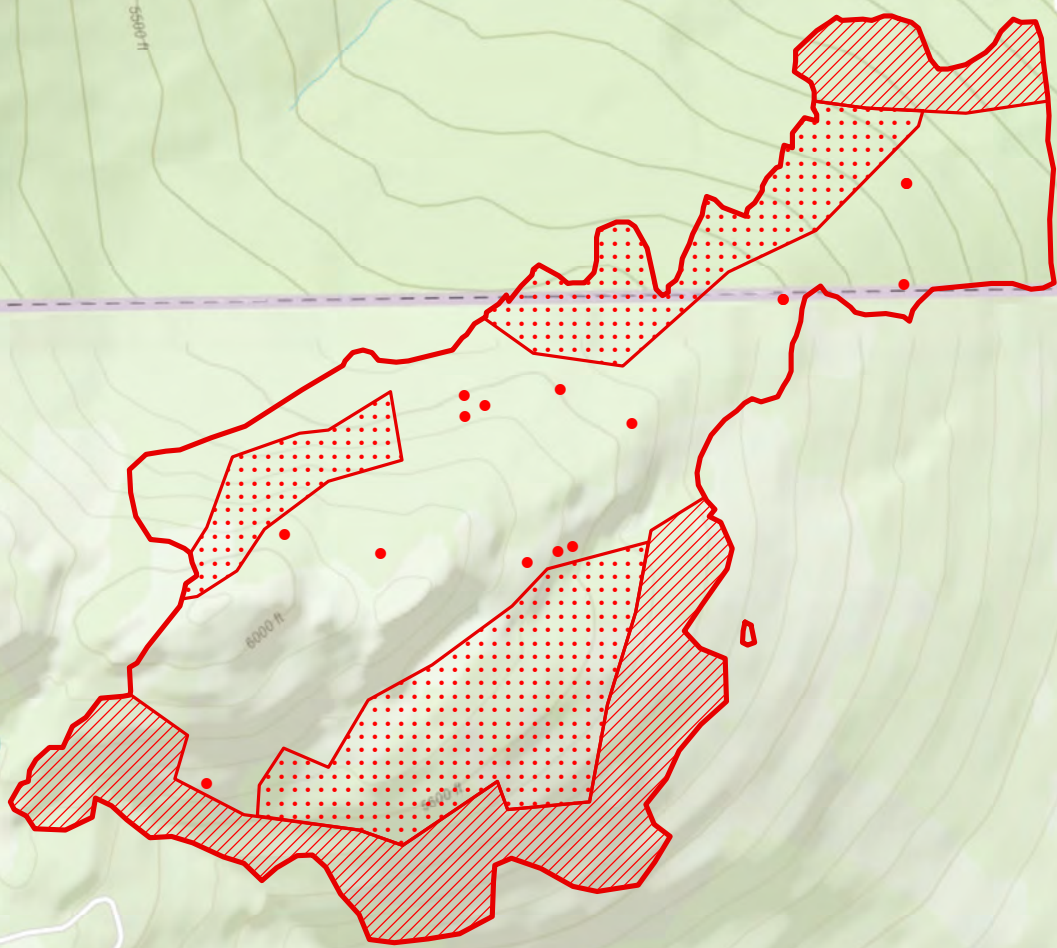
49°0'N

48°59'N

49°1'N

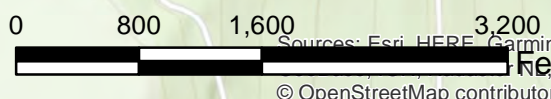
49°0'N

48°59'N



- Heat Perimeter
- Intense Heat Areas
- Isolated Heat Sources

NAD 1983 UTM Zone 11N



IRIN: Kyle Felker  
Map produced:  
8/22/2018 0051 hrs

Sources: Esri, HERE, Garmin, Intermap, increment P Corp., GEBCO, USGS, FAO, NPS, NRCAN, Ordnance Survey, Esri Japan, METI, Esri China (Hong Kong), swisstopo, OpenStreetMap contributors, and the GIS User Community

116°6'W

116°5'W

116°4'W

48°58'N