

116°6'W

116°5'W

49°1'N

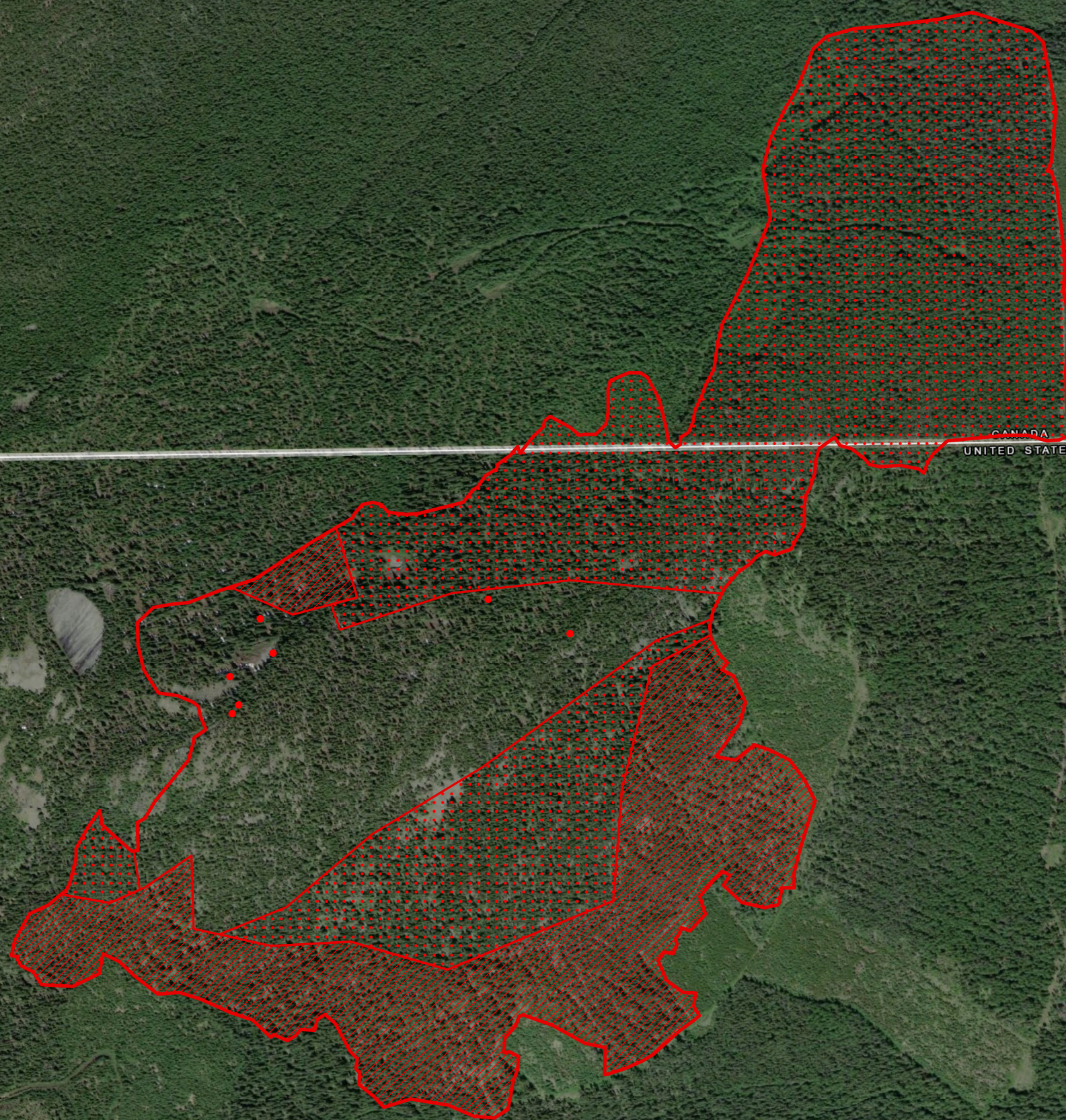
49°1'N

Copper Mtn Fire
 Heat Acres: 454
 ID-IPF-000486
 Infrared Interpretation
 Imagery Date:
 2018/08/22 2201 Hrs



49°0'N

49°0'N






CANADA
 UNITED STATES

Copper Creek

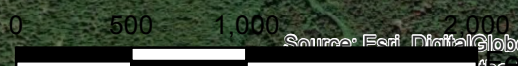
48°59'N

48°59'N

-  Heat Perimeter
-  Intense Heat Areas
-  Isolated Heat Sources

NAD 1983 UTM Zone 11N

IRIN: Kyle Felker
 Map produced:
 8/23/2018 0228 hrs



Source: Esri, DigitalGlobe, GeoEye, Earthstar Geographics, CNES/Airbus DS, USDA, USGS, the GIS User Community, Esri, HERE, DeLorme, TomTom, MapmyIndia, © OpenStreetMap contributors, and the GIS user community

116°6'W

116°5'W