

116°6'W

116°5'W

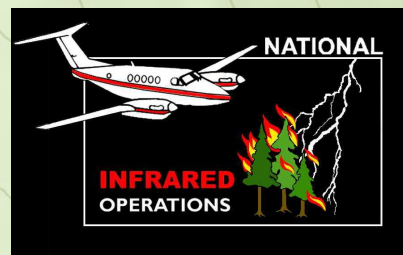
49°1'N

49°1'N

**Copper Mtn Fire**  
 Heat Acres: 454  
 ID-IPF-000486  
 Infrared Interpretation  
 Imagery Date:  
 2018/08/22 2201 Hrs



1:10,000

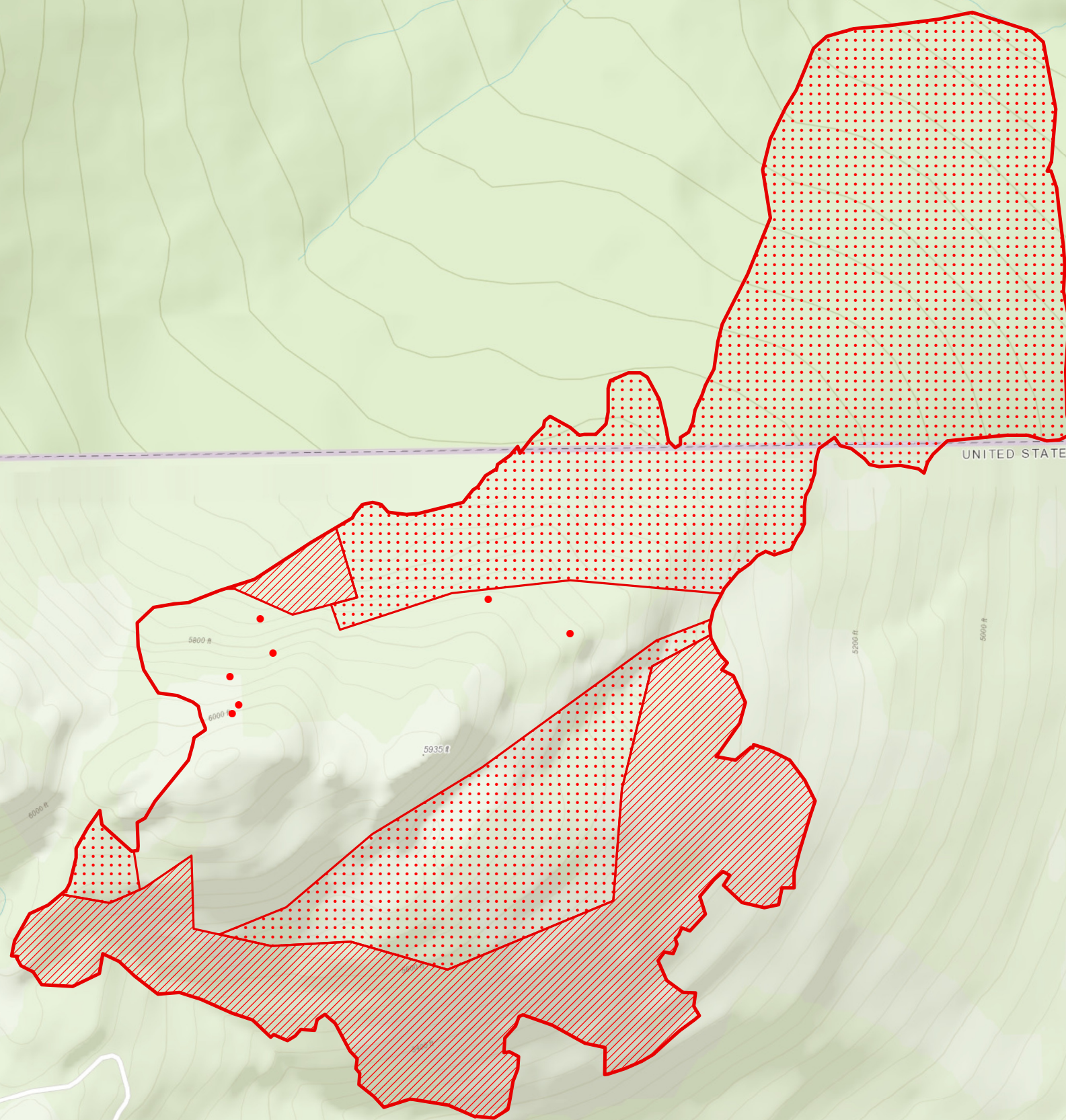


49°0'N




49°0'N

48°59'N

48°59'N



UNITED STATES

-  Heat Perimeter
-  Intense Heat Areas
-  Isolated Heat Sources

NAD 1983 UTM Zone 11N

0 500 1,000 2,000  
 feet

IRIN: Kyle Felker  
 Map produced:  
 8/23/2018 0229 hrs

Sources: Esri, HERE, Garmin, Intermap, increment P Corp., GEBCO, USGS, FAO, NPS, NRCAN, Swisstopo, Ordnance Survey, Esri Japan, METI, Esri China (Hong Kong), swisstopo, OpenStreetMap contributors, and the GIS User Community

116°6'W

116°5'W