

116°6'30"W 116°6'0"W 116°5'30"W 116°5'0"W 116°4'30"W 116°4'0"W



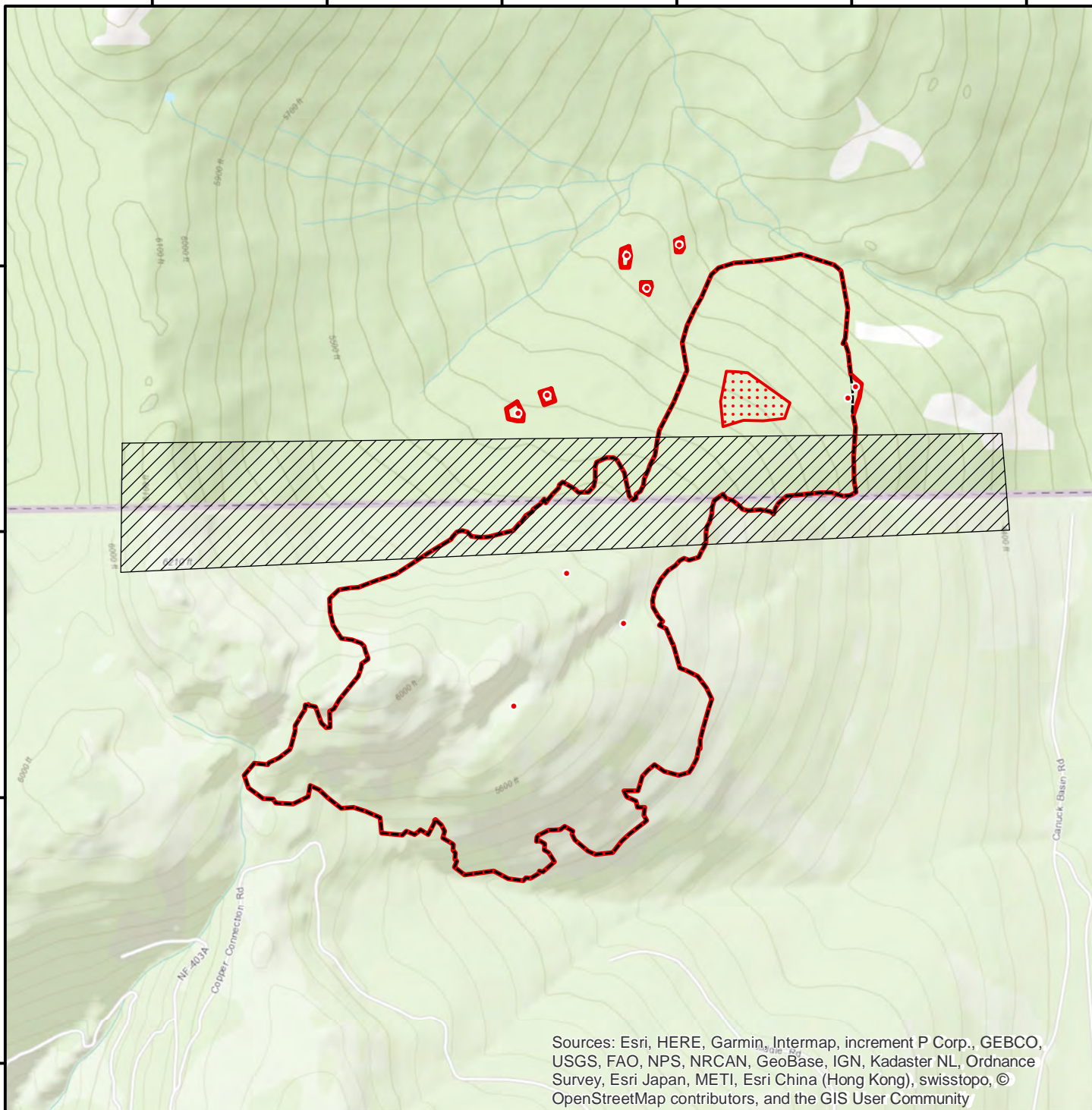
INFRARED MAP
Copper Mountain
ID-IPF-000486

Interpreted (IR) Acres: 467
Aug. 30, 2018 @ 2243 MDT

IRIN: Cheron Ferland
Nad83 UTM Zone 11

49°0'30"N
49°0'0"N
48°59'30"N
48°59'0"N

49°0'30"N
49°0'0"N
48°59'30"N
48°59'0"N



Sources: Esri, HERE, Garmin, Intermap, increment P Corp., GEBCO, USGS, FAO, NPS, NRCAN, GeoBase, IGN, Kadaster NL, Ordnance Survey, Esri Japan, METI, Esri China (Hong Kong), swisstopo, © OpenStreetMap contributors, and the GIS User Community

- Isolated Heat
- Previous Heat Perimeter (8/24/2018)
- No IR Scan Area
- Heat Perimeter
- Intense Heat
- Scattered Heat

