

## INFRARED INTERPRETER'S DAILY LOG

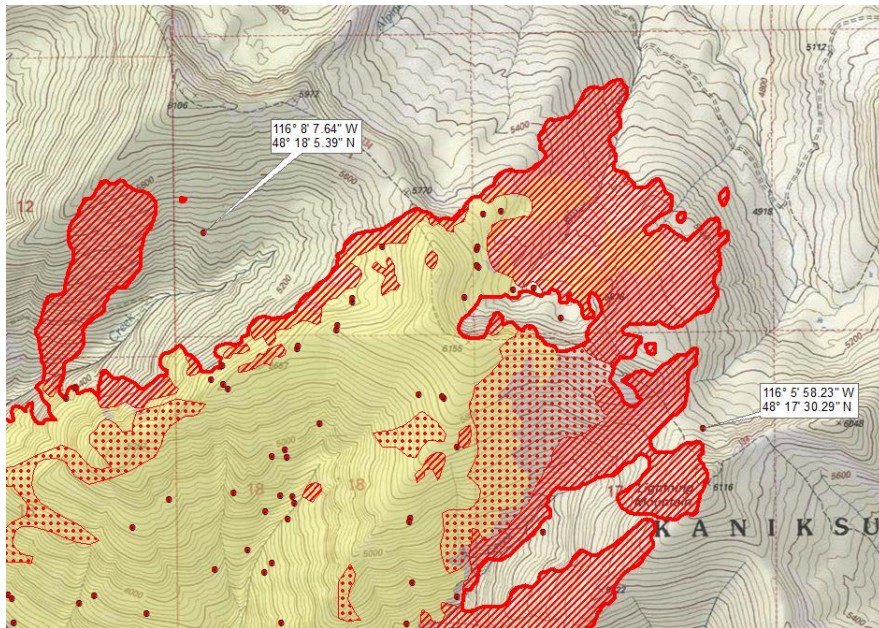
<b>Incident Name:</b> Cougar ID-IPF-000392	<b>IR Interpreter(s):</b> Tina Rotenbury trotenbury@fs.fed.us	<b>Local Dispatch Phone:</b> CDC 208-772-1605	<b>Interpreted Size:</b> 4,493 acres <b>Growth last period:</b> 874 acres
<b>Flight Time:</b> 2310 hrs MDT <b>Flight Date:</b> August 15, 2018	<b>Interpreter(s) location:</b> Custer, SD Black Hills NF <b>Interpreter(s) Phone:</b> 605 673-1444	<b>GACC IR Liaison:</b> Tim Stauffer <b>GACC IR Liaison Phone:</b> 406-529-6366	<b>National Coordinator:</b> Jan Johnson <b>National Coord. Phone:</b> 208-870-5066
<b>Ordered By:</b> Kristen Sanders - SITL	<b>A Number:</b> A-25	<b>Aircraft/Scanner System:</b> N149Z/Phoenix	<b>Pilots/Techs:</b> Johnson/DeHaas/Kazimir - Brantlinger
<b>IRIN Comments on imagery:</b> Good imagery		<b>Weather at time of flight:</b> Clear,	<b>Flight Objective:</b> Map perimeter and heat sources
<b>Date and Time Imagery Received by Interpreter:</b> 8/15/2018 2325 hrs MDT		<b>Type of media for final product:</b> Shapefiles, KMZ files, maps, IRIN log	
<b>Date and Time Products Delivered to Incident:</b> 8/16/2018 0230 hrs MDT		<b>Digital files sent to:</b> <a href="https://ftp.nifc.gov/public/incident_specific_data/n_rockies/2018_fires/2018_Cougar/IR/201807016">https://ftp.nifc.gov/public/incident_specific_data/n_rockies/2018_fires/2018_Cougar/IR/201807016</a>	

**Comments /notes on tonight's mission and this interpretation:**

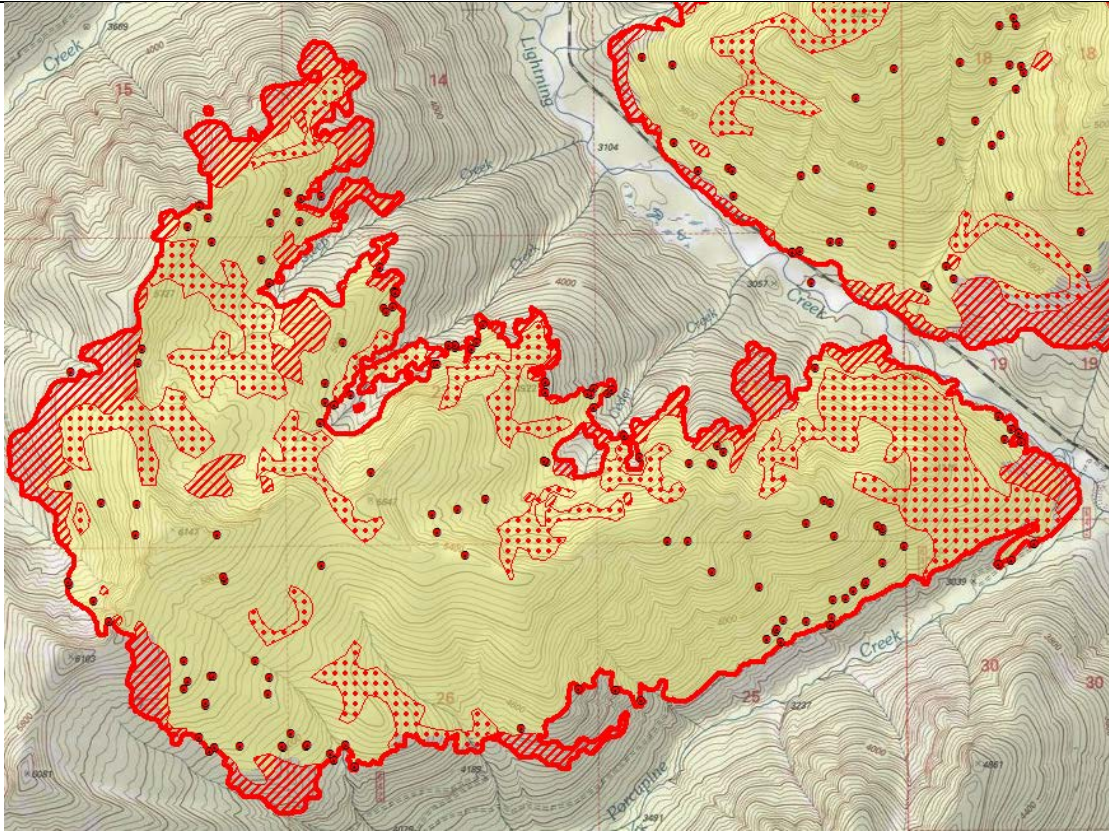
I started my interpretation with the 08/14/2018 IR fire perimeter. New growth – 874 acres

Yellow is 8/14/2018 IR heat perimeter. Red line is current IR heat perimeter.

Growth occurred on the northeast toward Lightning Mountain with a couple of isolated heat sources outside perimeter and small spot overs with intense heat. Perimeter growth north of Mud Creek with small spot over and intense heat. Intense heat and scattered heat present along perimeter on the north, south and southeast near the Road 419.



# INFRARED INTERPRETER'S DAILY LOG



Scattered and isolated heat throughout interior, with intense heat long the edges perimeter boundary.

