

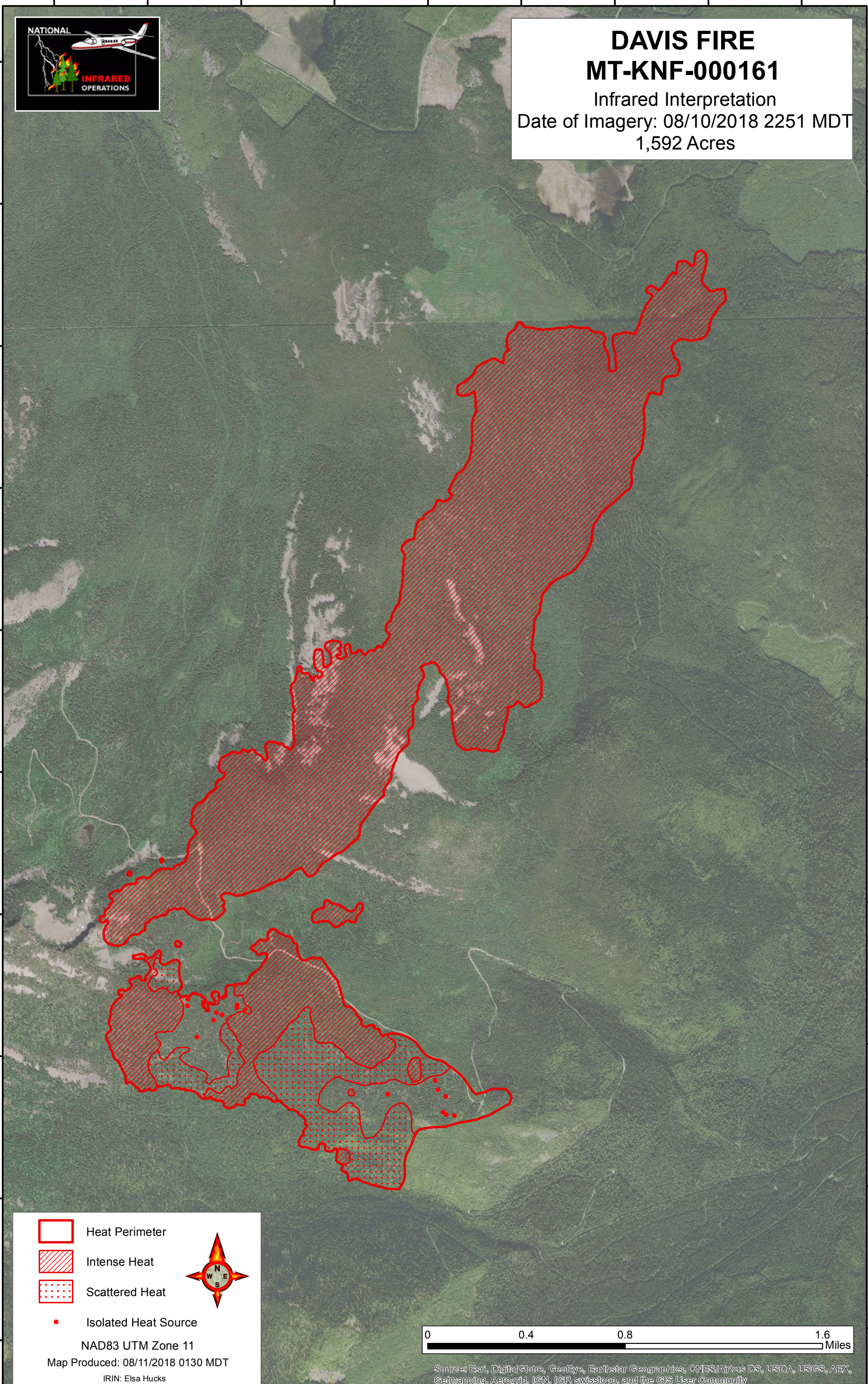
115°57'0"W 115°56'30"W 115°56'0"W 115°55'30"W 115°55'0"W 115°54'30"W 115°54'0"W 115°53'30"W 115°53'0"W






**DAVIS FIRE**  
**MT-KNF-000161**  
Infrared Interpretation  
Date of Imagery: 08/10/2018 2251 MDT  
1,592 Acres

49°10'N  
49°0'30"N  
49°0'0"N  
48°59'30"N  
48°59'0"N  
48°58'30"N  
48°58'0"N  
48°57'30"N  
48°57'0"N  
48°56'30"N

49°10'N  
49°0'30"N  
49°0'0"N  
48°59'30"N  
48°59'0"N  
48°58'30"N  
48°58'0"N  
48°57'30"N  
48°57'0"N  
48°56'30"N



-  Heat Perimeter
-  Intense Heat
-  Scattered Heat

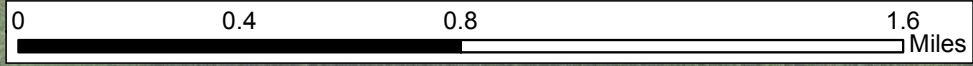


● Isolated Heat Source

NAD83 UTM Zone 11

Map Produced: 08/11/2018 0130 MDT

IRIN: Elsa Hucks



Source: Esri, DigitalGlobe, GeoEye, Earthstar Geographics, CNES/Airbus DS, USDA, USGS, AEX, Getmapping, Aerogrid, IGN, IGP, swisstopo, and the GIS User Community

115°57'0"W 115°56'30"W 115°56'0"W 115°55'30"W 115°55'0"W 115°54'30"W 115°54'0"W 115°53'30"W 115°53'0"W