

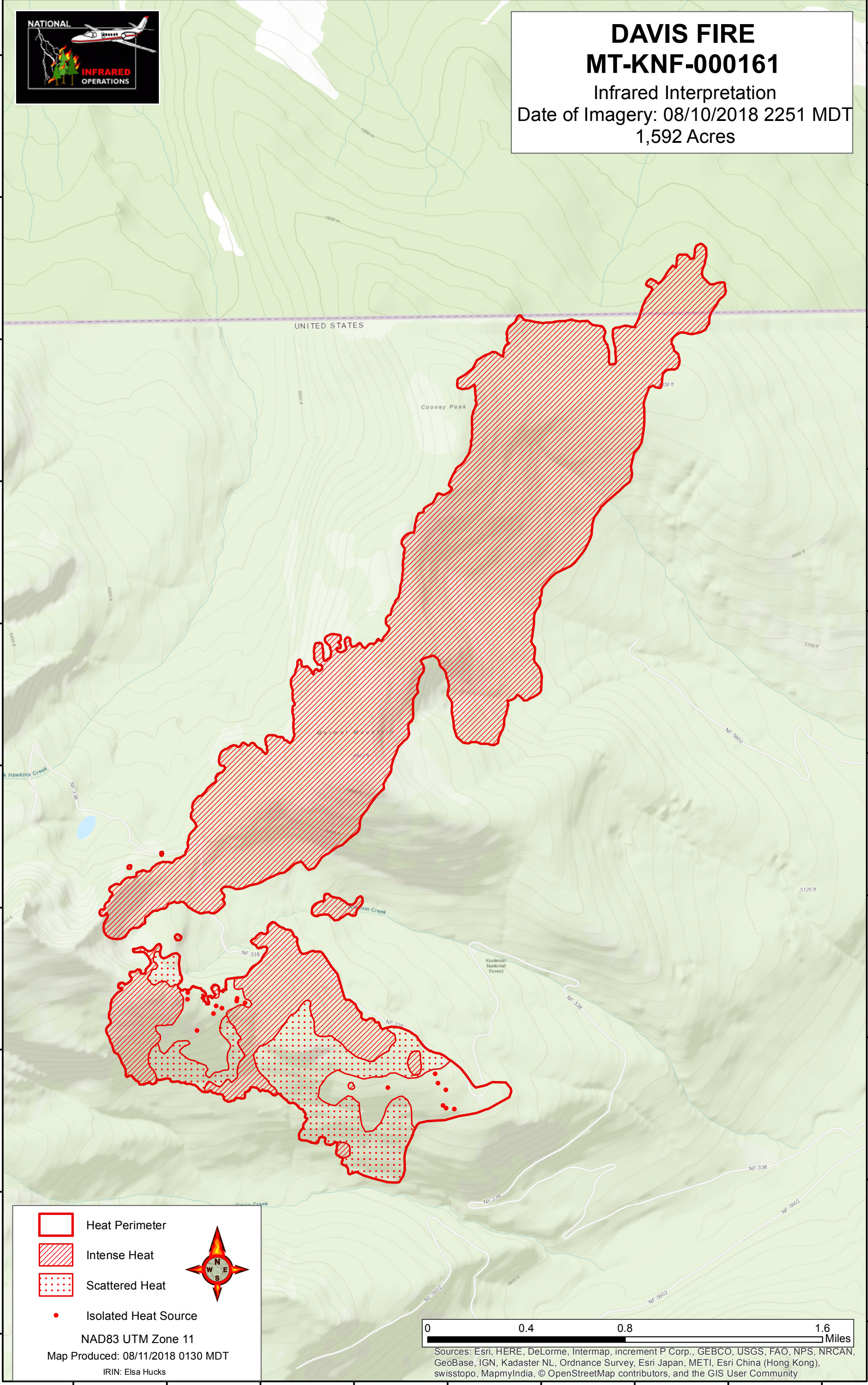
115°57'0"W 115°56'30"W 115°56'0"W 115°55'30"W 115°55'0"W 115°54'30"W 115°54'0"W 115°53'30"W 115°53'0"W








DAVIS FIRE
MT-KNF-000161
Infrared Interpretation
Date of Imagery: 08/10/2018 2251 MDT
1,592 Acres

49°10'N
49°0'30"N
49°0'0"N
48°59'30"N
48°59'0"N
48°58'30"N
48°58'0"N
48°57'30"N
48°57'0"N
48°56'30"N

49°10'N
49°0'30"N
49°0'0"N
48°59'30"N
48°59'0"N
48°58'30"N
48°58'0"N
48°57'30"N
48°57'0"N
48°56'30"N



 Heat Perimeter
 Intense Heat
 Scattered Heat
 Isolated Heat Source



NAD83 UTM Zone 11
 Map Produced: 08/11/2018 0130 MDT
 IRIN: Elsa Hucks

0 0.4 0.8 1.6 Miles

Sources: Esri, HERE, DeLorme, Intermap, increment P Corp., GEBCO, USGS, FAO, NPS, NRCAN, GeoBase, IGN, Kadaster NL, Ordnance Survey, Esri Japan, METI, Esri China (Hong Kong), swisstopo, MapmyIndia, © OpenStreetMap contributors, and the GIS User Community

115°57'0"W 115°56'30"W 115°56'0"W 115°55'30"W 115°55'0"W 115°54'30"W 115°54'0"W 115°53'30"W 115°53'0"W