

-116° 1' -116° 0.5' -116° 0' -115° 59.5' -115° 59' -115° 58.5' -115° 58' -115° 57.5' -115° 57' -115° 56.5' -115° 56' -115° 55.5' -115° 55' -115° 54.5' -115° 54' -115° 53.5' -115° 53' -115° 52.5' -115° 52' -115° 51.5' -115° 51'


Label	Latitude	Longitude
DP 1	48° 58.213'	-115° 50.427'
DP 2	48° 57.198'	-115° 52.758'
DP 3	48° 57.052'	-115° 53.473'
DP 4	48° 57.310'	-115° 54.871'
DP 20	48° 56.923'	-115° 54.885'
Troy Helispot	48° 28.921'	-115° 54.324'
H10 (T3)	48° 57.300'	-115° 54.885'
H5 (T3)	48° 58.200'	-115° 50.439'
H15 (T3)	48° 58.228'	-115° 56.285'

DAVIS FIRE


Air Ops Map

375 Acres

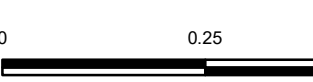
20180805 @ 1200 Hrs

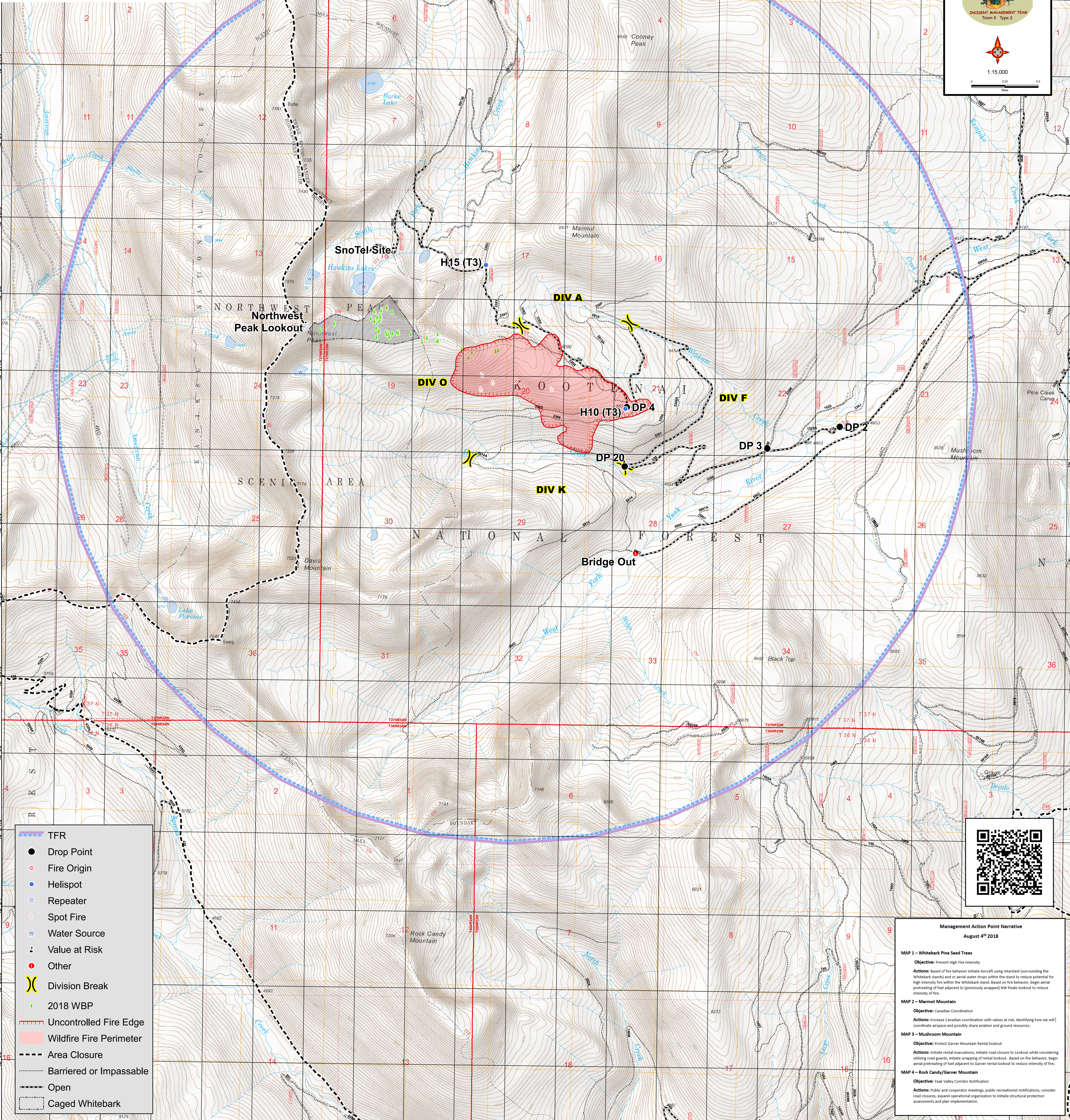


INCIDENT MANAGEMENT TEAM
Team 6 Type 2



1:15,000





- - - - - TFR
- Drop Point
- Fire Origin
- Helispot
- Ⓡ Repeater
- Spot Fire
- Ⓢ Water Source
- ⋮ Value at Risk
- Other
- ⌘ Division Break
- ▲ 2018 WBP
- - - - - Uncontrolled Fire Edge
- - - - - Wildfire Fire Perimeter
- - - - - Area Closure
- - - - - Barried or Impassable
- - - - - Open
- - - - - Caged Whitebark



Management Action Point Narrative
August 4th 2018

MAP 1 – Whitebark Pine Seed Trees
Objective: Prevent High Fire Intensity
Actions: Based on fire behavior initiate Aircraft using retardant (surrounding the Whitebark stands) and/or aerial water drops within the stand to reduce potential for high intensity fire within the Whitebark stand. Based on fire behavior, begin aerial pretreating of fuel adjacent to (previously wrapped) NW Peak lookout to reduce intensity of fire.

MAP 2 – Marmot Mountain
Objective: Canadian Coordination
Actions: Increase Canadian coordination with values at risk, identifying how we will coordinate airspace and possibly share aviation and ground resources.

MAP 3 – Mushroom Mountain
Objective: Protect Garver Mountain Rental lookout
Actions: Initiate rental evacuations, initiate road closure to Lookout while considering utilizing road guards, initiate wrapping of rental lookout. Based on fire behavior, begin aerial pretreating of fuel adjacent to Garver rental lookout to reduce intensity of fire.

MAP 4 – Rock Candy/Garver Mountain
Objective: Yak Valley Corridor Notification
Actions: Public and cooperator meetings, public recreationist notifications, consider road closures, expand operational organization to initiate structural protection assessments and plan implementation.

-116° 0.5' -116° 0' -115° 59.5' -115° 59' -115° 58.5' -115° 58' -115° 57.5' -115° 57' -115° 56.5' -115° 56' -115° 55.5' -115° 55' -115° 54.5' -115° 54' -115° 53.5' -115° 53' -115° 52.5' -115° 52' -115° 51.5' -115° 51'