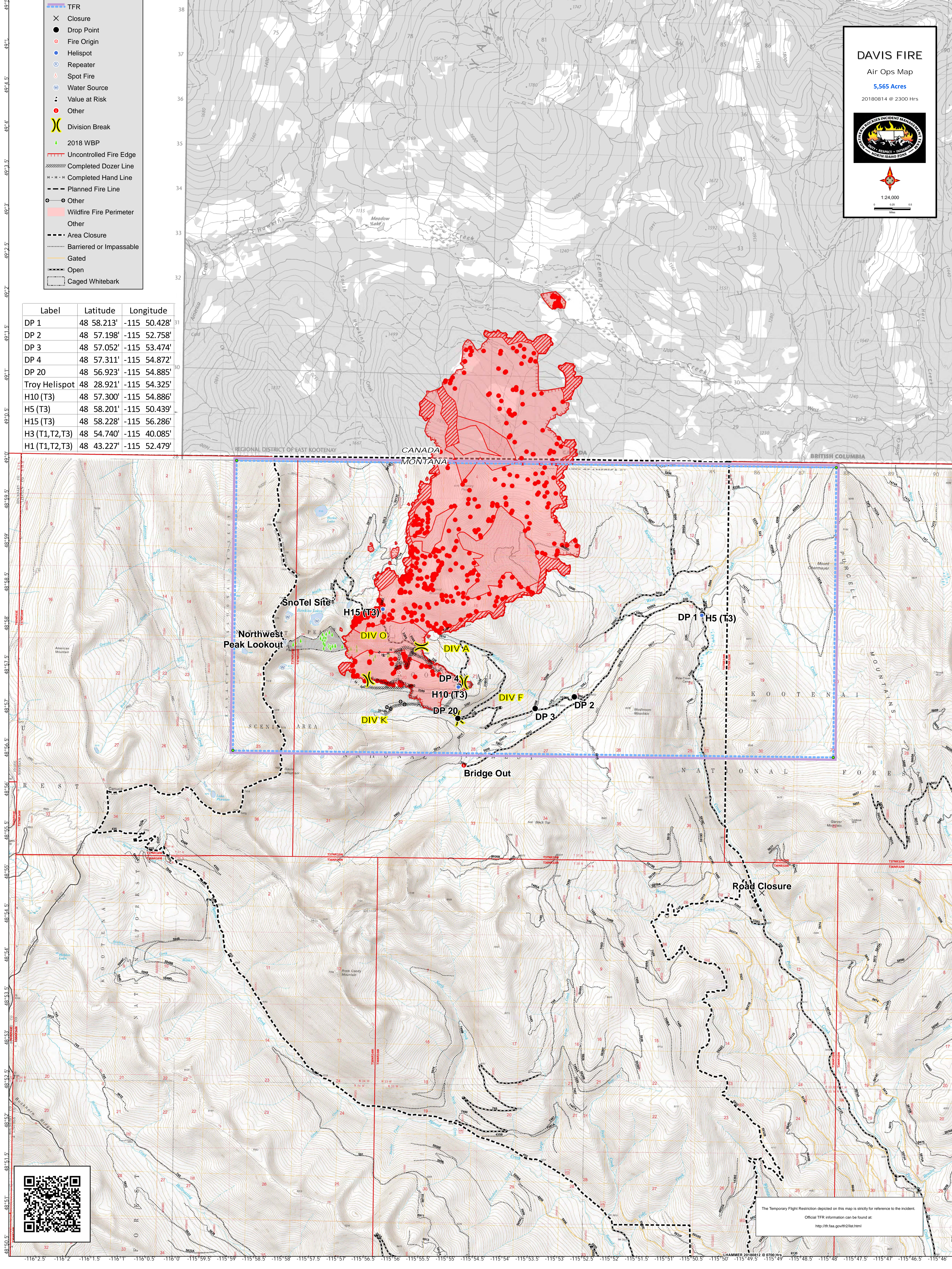


**DAVIS FIRE**  
 Air Ops Map  
 5,565 Acres  
 20180814 @ 2300 Hrs

1:24,000

- TFR
- X Closure
- Drop Point
- Fire Origin
- Helispot
- Repeater
- Spot Fire
- Water Source
- ⬇ Value at Risk
- Other
- X Division Break
- 2018 WBP
- Uncontrolled Fire Edge
- Completed Dozer Line
- Completed Hand Line
- Planned Fire Line
- Other
- Wildfire Fire Perimeter
- Other
- Area Closure
- Barrired or Impassable
- Gated
- Open
- Caged Whitebark

| Label         | Latitude   | Longitude    |
|---------------|------------|--------------|
| DP 1          | 48 58.213' | -115 50.428' |
| DP 2          | 48 57.198' | -115 52.758' |
| DP 3          | 48 57.052' | -115 53.474' |
| DP 4          | 48 57.311' | -115 54.872' |
| DP 20         | 48 56.923' | -115 54.885' |
| Troy Helispot | 48 28.921' | -115 54.325' |
| H10 (T3)      | 48 57.300' | -115 54.886' |
| H5 (T3)       | 48 58.201' | -115 50.439' |
| H15 (T3)      | 48 58.228' | -115 56.286' |
| H3 (T1,T2,T3) | 48 54.740' | -115 40.085' |
| H1 (T1,T2,T3) | 48 43.227' | -115 52.479' |



The Temporary Flight Restriction depicted on this map is strictly for reference to the incident.  
 Official TFR information can be found at:  
<http://tfr.faa.gov/tfr2/tfr.html>