


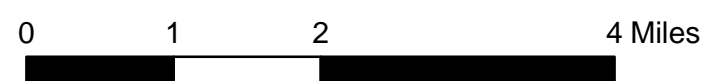


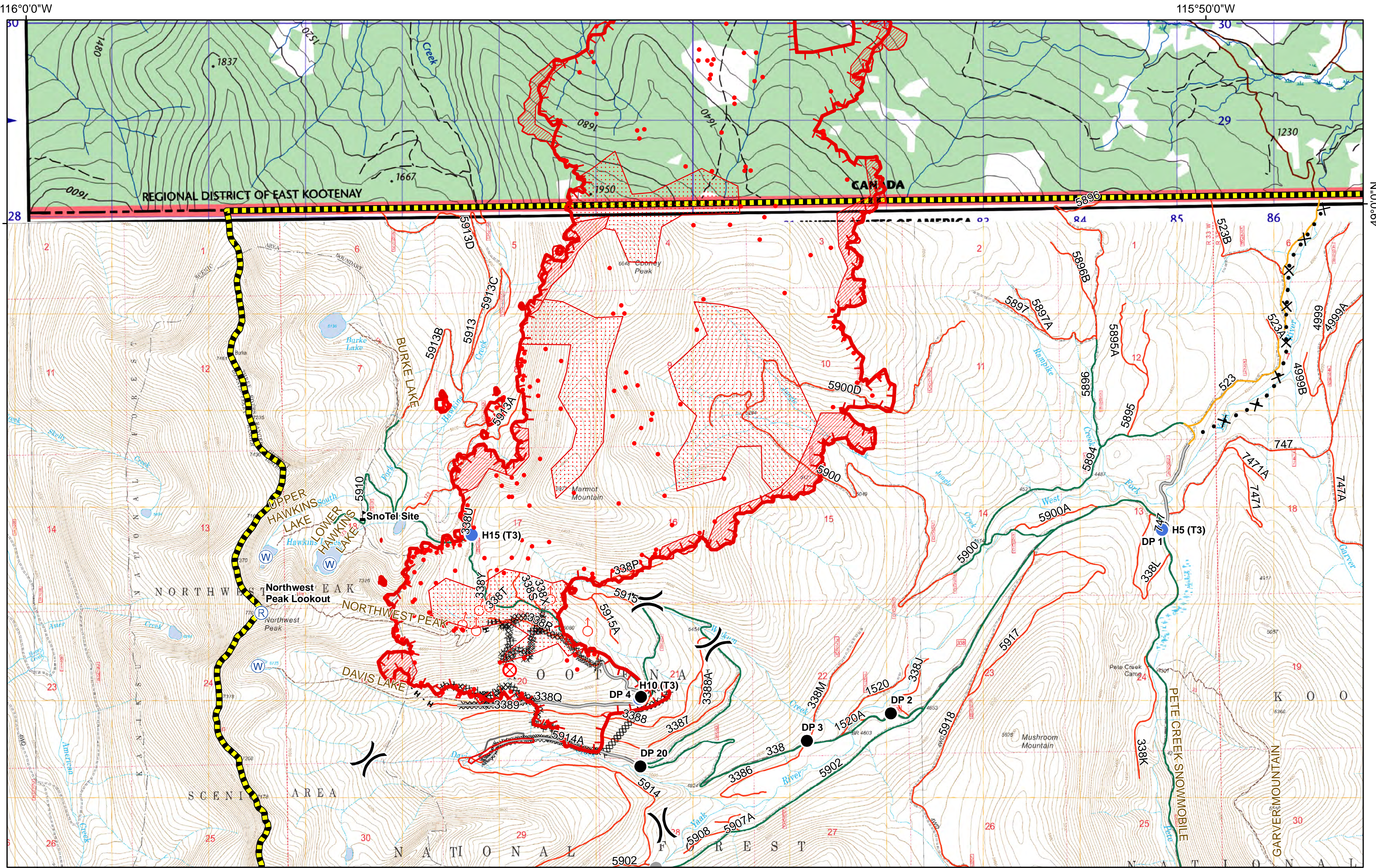
## Davis Fire

MT-KNF-000161

Fire perimeter as of  
08/15/2018 2256 hrs  
5724 Acres

-  200815\_2256\_Davis\_HeatPerimeter
-  Planned Fire Line
-  DavisClosure20180813





**Davis Fire**  
 MT-KNF-000161  
 Fire perimeter as of 08/15/2018 2256 hrs  
 5724 Acres

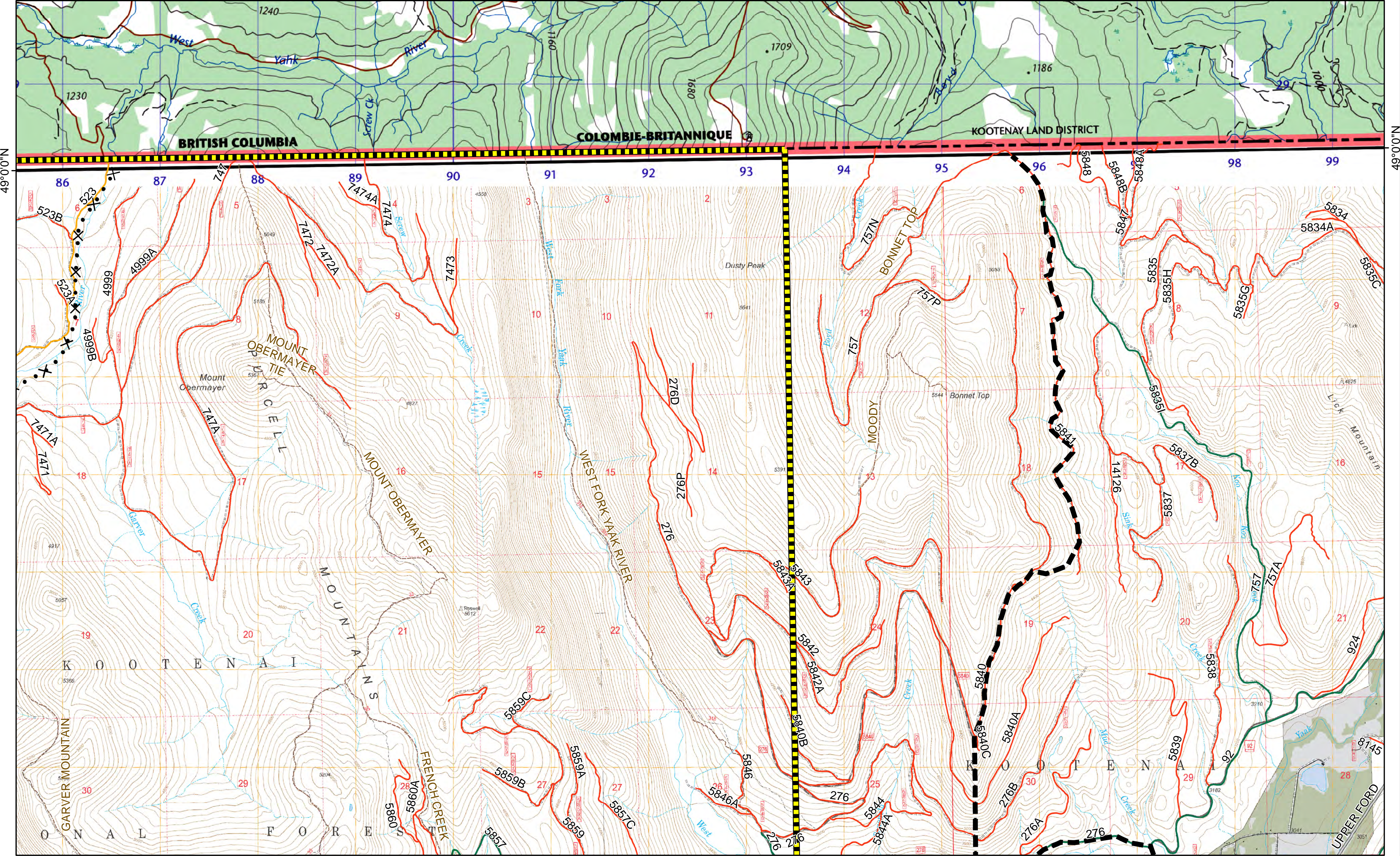
● 200815_2256_Davis_IsolatedHeatSources	● Drop Point	♂ Spot Fire	⎓ Division Break	⎓ Uncontrolled Fire Edge	▭ Wildfire Daily Fire Perimeter	<b>FS Roads</b>
▭ 200815_2256_Davis_HeatPerimeter	⊗ Fire Origin	Ⓜ Water Source	⋯ Completed Dozer Line	⋯ Completed Hand Line	▭ Other	— Barrired or Impassable
▨ 200815_2256_Davis_IntenseHeat	● Helispot	⚠ Value at Risk	— Access or Improved Road	⊗ Proposed Dozer Line	▭ DavisClosure20180813	— Gated
▤ 200815_2256_Davis_ScatteredHeat	Ⓜ Repeater	● Other				— Open
						--- Trails

0 0.25 0.5 1 Miles

116°0'0"W 115°50'0"W

49°0'0"N 49°0'0"N

115°40'0"W



**Davis Fire**  
MT-KNF-000161

Fire perimeter as of  
08/15/2018 2256 hrs  
5724 Acres

- ✕ • • Proposed Dozer Line
- Planned Fire Line
- DavisClosure20180813

- Non-FS Roads**
- C - COUNTY, PARISH, BOROUGH
  - P - PRIVATE

- FS Roads**
- Barriered or Impassable
  - Gated
  - Open
  - Trails

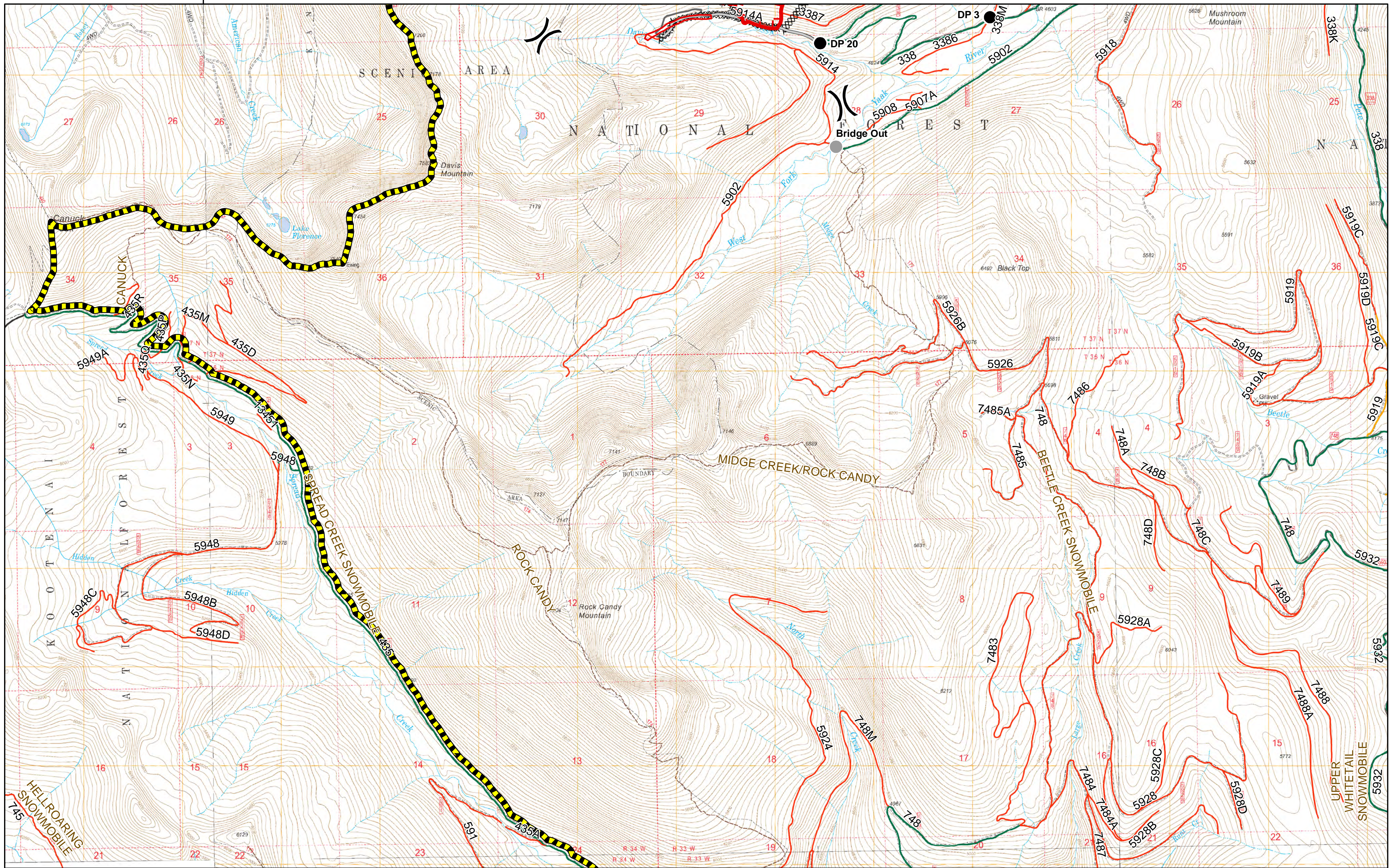
0 0.25 0.5 1 Miles



115°40'0"W

116°0'0"W

116°0'0"W



**Davis Fire**  
 MT-KNF-000161

Fire perimeter as of  
 08/15/2018 2256 hrs  
 5724 Acres

200815\_2256\_Davis\_HeatPerimeter

Drop Point  
 Other

Division Break

Uncontrolled Fire Edge  
 Completed Dozer Line  
 Access or Improved Road

Wildfire Daily Fire Perimeter  
 Other  
 DavisClosure20180813

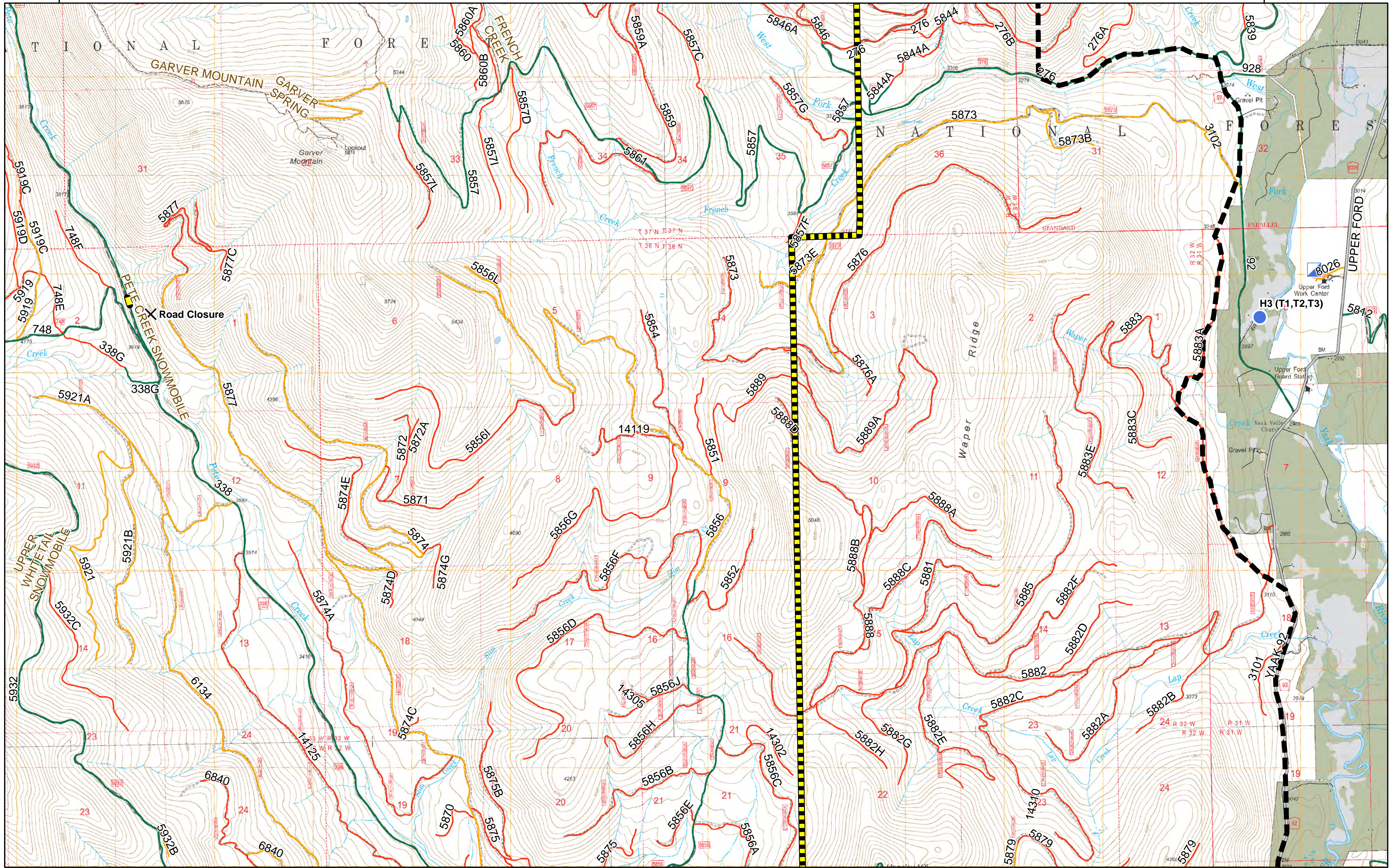
**FS Roads**  
 Barriered or Impassable  
 Gated  
 Open  
 Trails

0 0.25 0.5 1 Miles



115°50'0"W

115°40'0"W



115°50'0"W

115°40'0"W

**Davis Fire**  
MT-KNF-000161

Fire perimeter as of  
08/15/2018 2256 hrs  
5724 Acres

- ✕ Closure
- Helispot
- Incident Command Post
- - - Planned Fire Line

DavisClosure20180813

**Non-FS Roads**

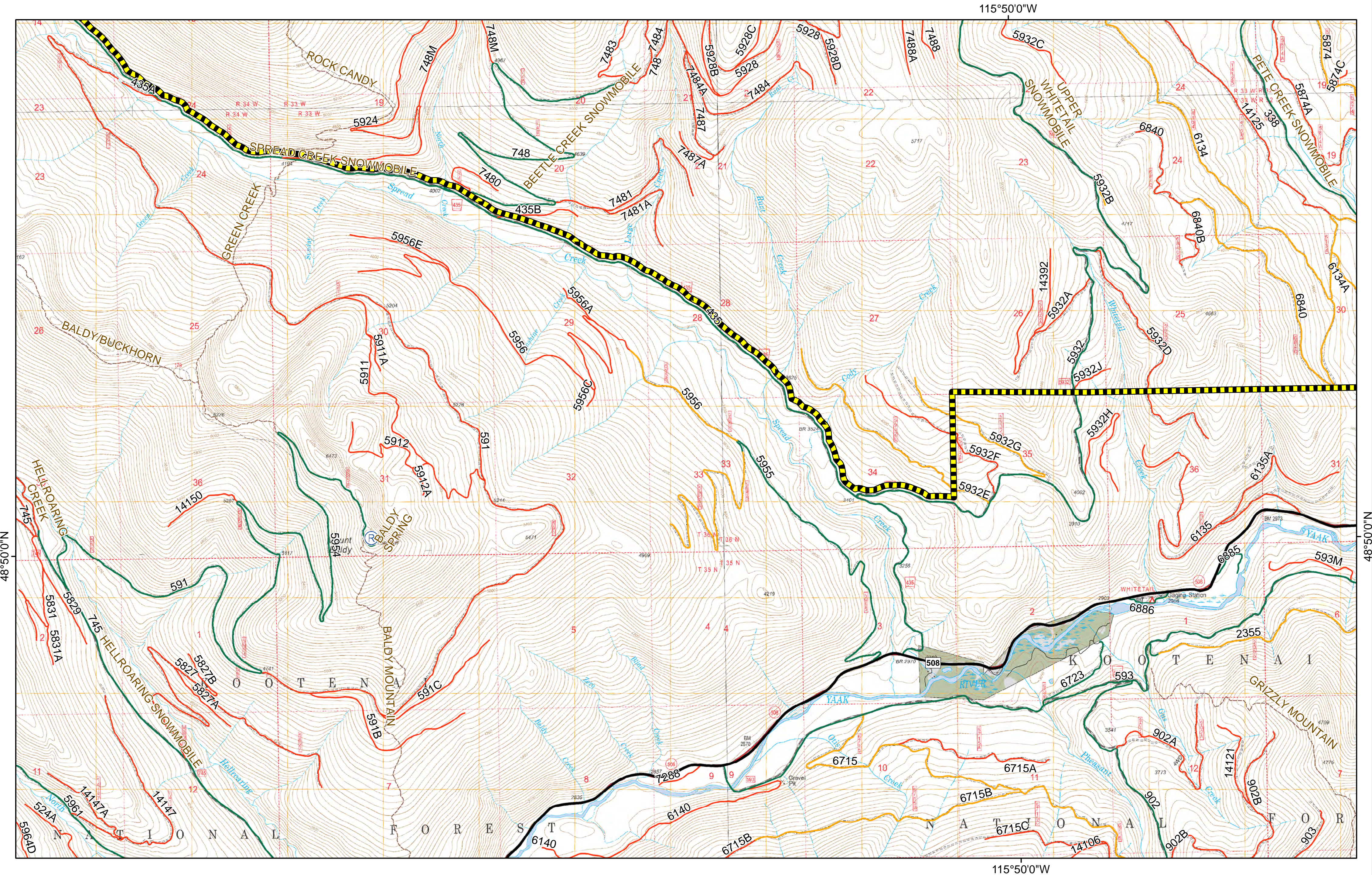
- C - COUNTY, PARISH, BOROUGH
- P - PRIVATE

**FS Roads**

- Barriered or Impassable
- Gated
- Open
- Trails

0 0.25 0.5 1 Miles





**Davis Fire**  
MT-KNF-000161

Fire perimeter as of  
08/15/2018 2256 hrs  
5724 Acres

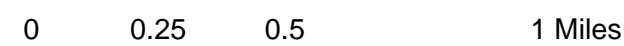
- Ⓡ Repeater
- DavisClosure20180813

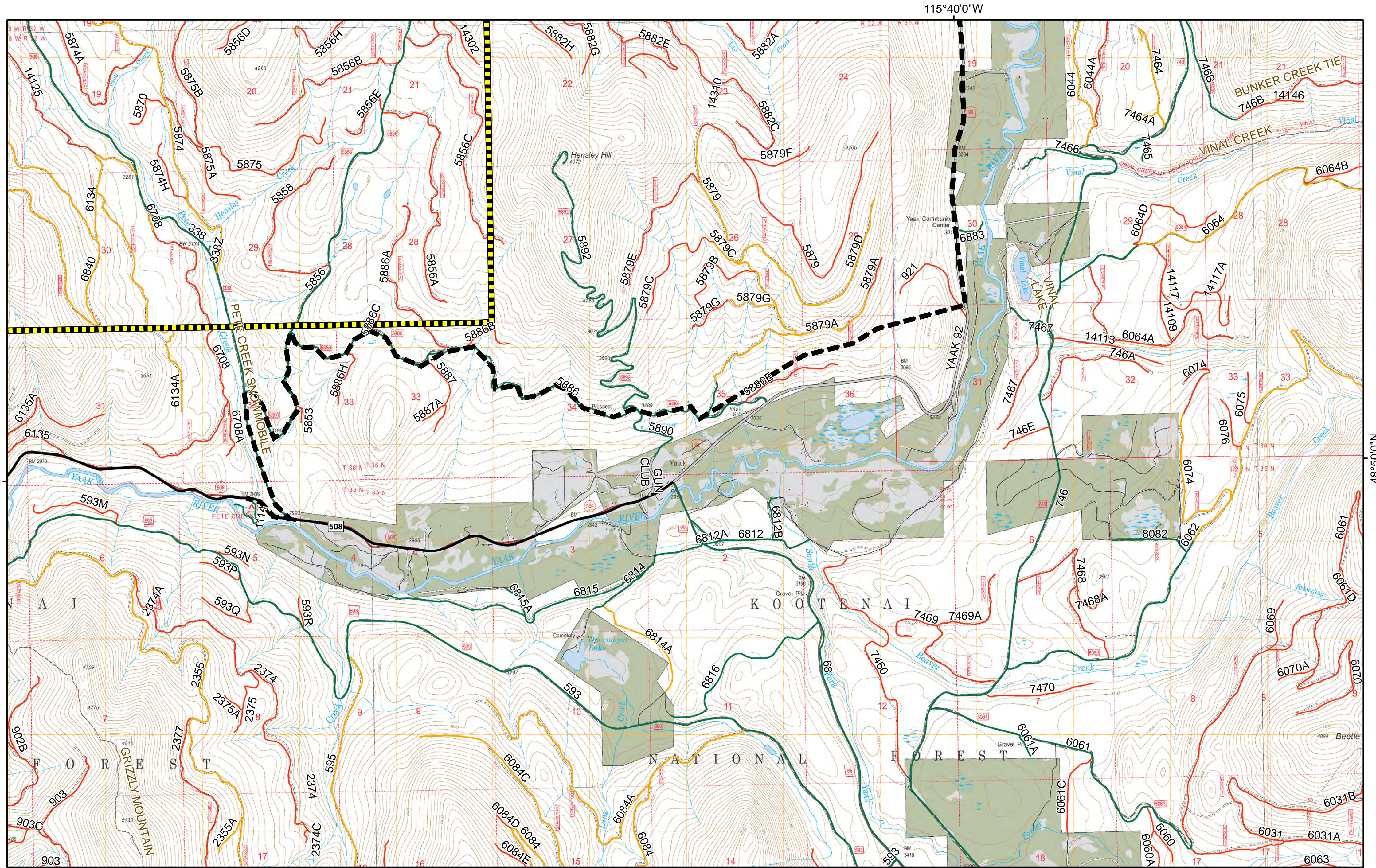
**Non-FS Roads**

- P - PRIVATE
- SH - STATE HIGHWAY

**FS Roads**

- Barriered or Impassable
- Gated
- Open
- Trails

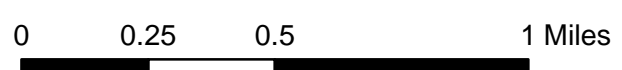




**Davis Fire**  
MT-KNF-000161

Fire perimeter as of  
08/15/2018 2256 hrs  
5724 Acres

- |                        |                             |                         |
|------------------------|-----------------------------|-------------------------|
| Planned Fire Line      | <b>Non-FS Roads</b>         | <b>FS Roads</b>         |
| Davis Closure 20180813 | C - COUNTY, PARISH, BOROUGH | Barriered or Impassable |
|                        | P - PRIVATE                 | Gated                   |
|                        | SH - STATE HIGHWAY          | Open                    |
|                        |                             | Trails                  |



115°40'0"W

115°40'0"W

48°50'0"N

48°50'0"N