
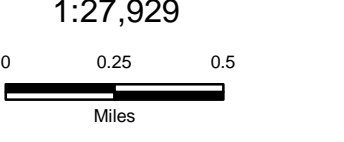


Label	Latitude	Longitude
DP 1	48 58.213'	-115 50.428'
DP 2	48 57.198'	-115 52.758'
DP 3	48 57.052'	-115 53.474'
DP 4	48 57.311'	-115 54.872'
DP 20	48 56.923'	-115 54.885'
Troy Helispot	48 28.921'	-115 54.325'
H1 (T1, T2, T3)	48 43.227'	-115 52.479'
H3 (T1, T2, T3)	48 54.740'	-115 40.085'
H5 (T3)	48 58.201'	-115 50.439'
H10 (T3)	48 57.300'	-115 54.886'
H15 (T3)	48 58.228'	-115 56.286'
DS-01 (Davis Lk)	48 57.526'	-115 57.765'
DS-02 (Hawkins Lk)	48 58.076'	-115 57.494'

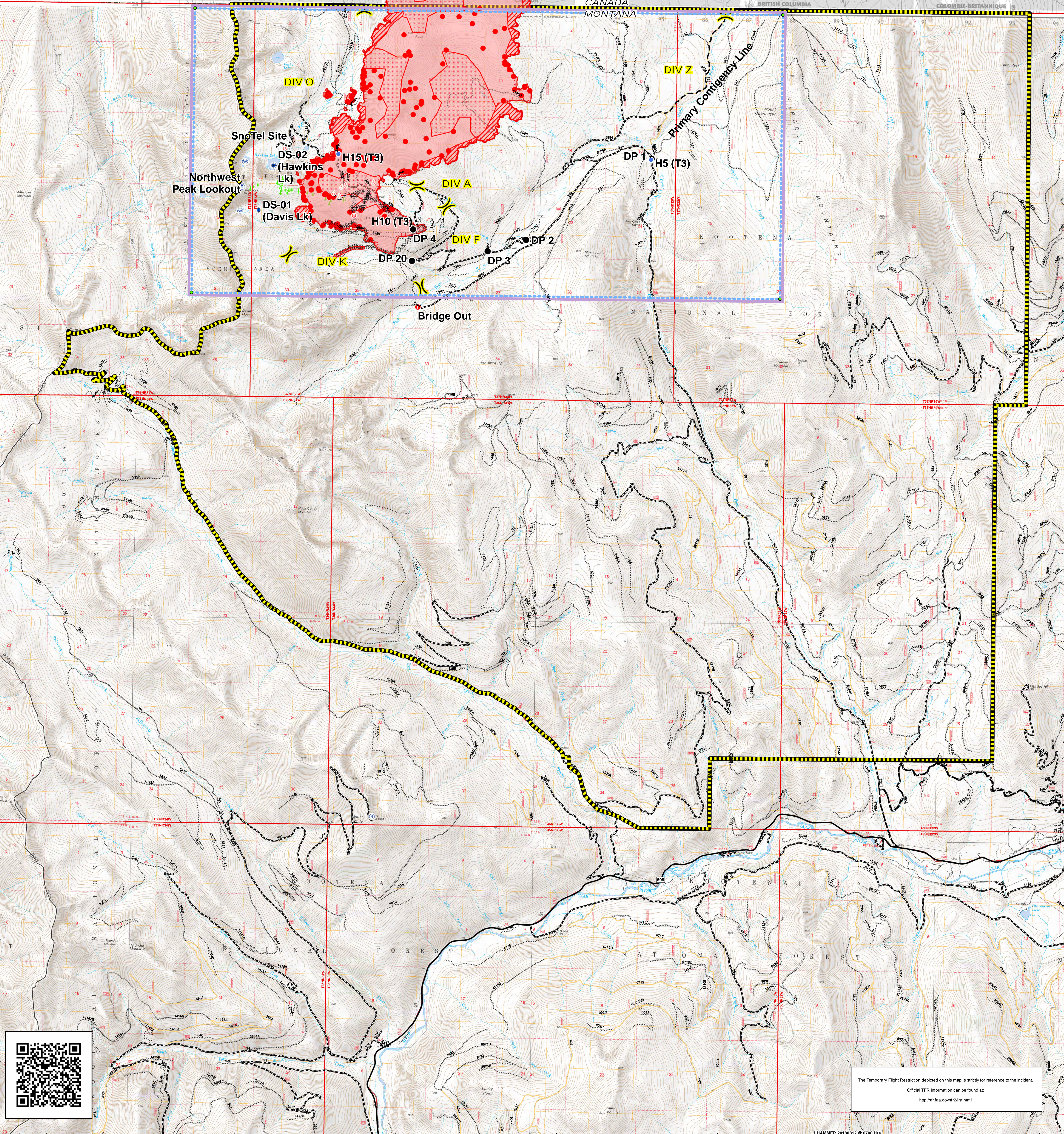
**DAVIS FIRE**  
 Air Ops Map  
 5,724 Acres  
 08/15/2018 2256



1:27,929



- TFR
- Area Closure Order
- Dip Site
- Drop Point
- Fire Origin
- Helispot
- Repeater
- Spot Fire
- Water Source
- Value at Risk
- Other
- Division Break
- 2018 WBP
- Uncontrolled Fire Edge
- Completed Dozer Line
- Completed Hand Line
- Planning Fire Line
- Wildfire Fire Perimeter
- Other
- Bartered or Impassable
- Gated
- Open



The Temporary Flight Restriction depicted on this map is strictly for reference to the incident.  
 Official TFR information can be found at:  
<http://tfr.faa.gov/tfr2/tfr.html>