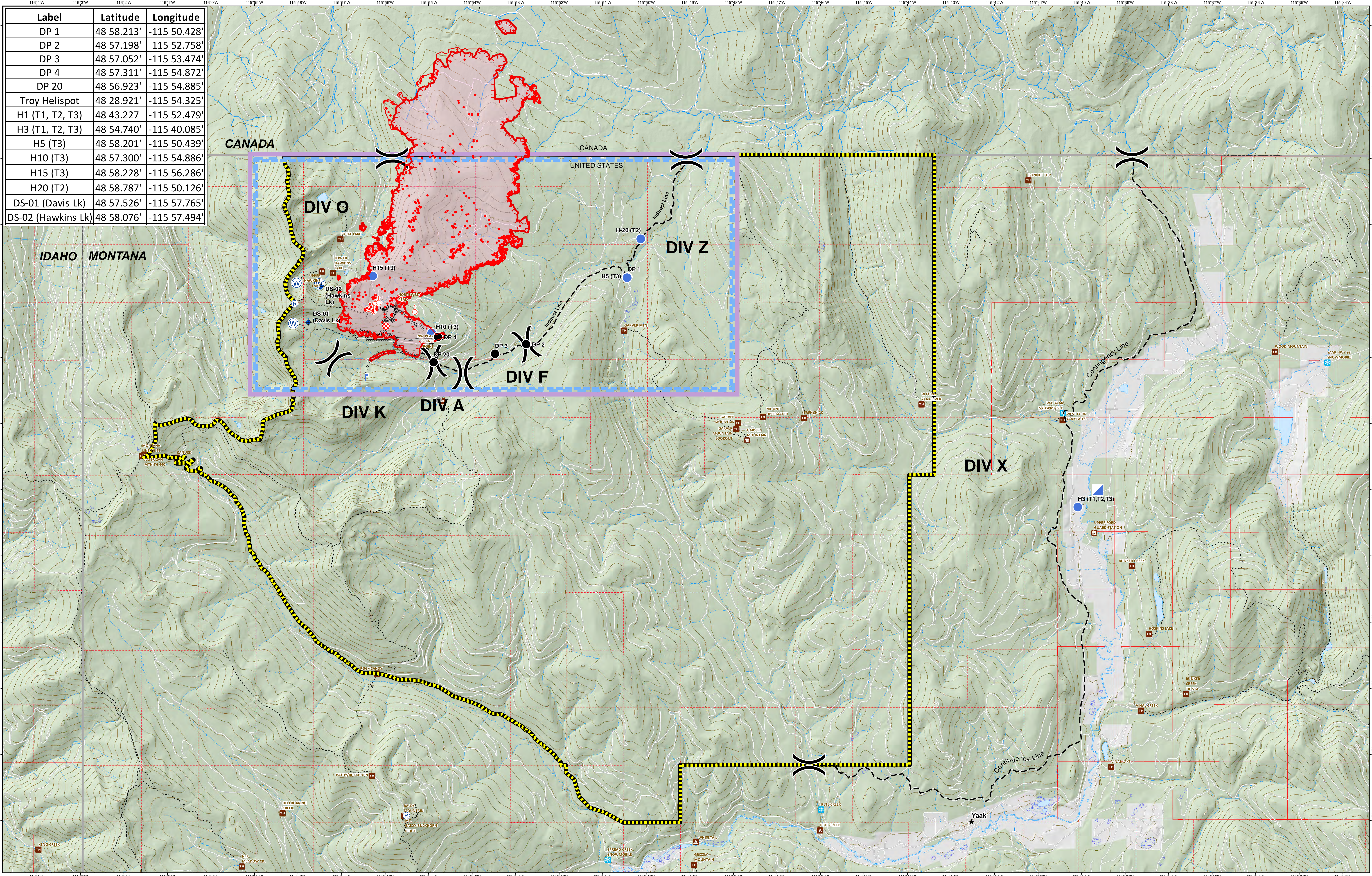


Label	Latitude	Longitude
DP 1	48 58.213'	-115 50.428'
DP 2	48 57.198'	-115 52.758'
DP 3	48 57.052'	-115 53.474'
DP 4	48 57.311'	-115 54.872'
DP 20	48 56.923'	-115 54.885'
Troy Helispot	48 28.921'	-115 54.325'
H1 (T1, T2, T3)	48 43.227'	-115 52.479'
H3 (T1, T2, T3)	48 54.740'	-115 40.085'
H5 (T3)	48 58.201'	-115 50.439'
H10 (T3)	48 57.300'	-115 54.886'
H15 (T3)	48 58.228'	-115 56.286'
H20 (T2)	48 58.787'	-115 50.126'
DS-01 (Davis Lk)	48 57.526'	-115 57.765'
DS-02 (Hawkins Lk)	48 58.076'	-115 57.494'



Davis Fire

MT-KNF-000161

Fire perimeter as of
08/15/2018 2256 hrs
5,724 Acres

• 20180818_2200_Davis_IsolatedHeatSources	★ Town	Uncontrolled Fire Edge	— Access or Improved Road	◆ Dip Site	▣ Incident Command Post	Ⓜ Water Source
▭ 20180818_2200_Davis_HeatPerimeter	▭ TFR	Completed Dozer Line	- - - Planned Fire Line	● Drop Point	Ⓜ Lookout) Division Break
	▨ Area Closure Order	Completed Hand Line	Temporary Flight Restriction	⊗ Fire Origin	Ⓜ Repeater	
			Wildfire Perimeter	● Helispot	⊗ Spot Fire	

