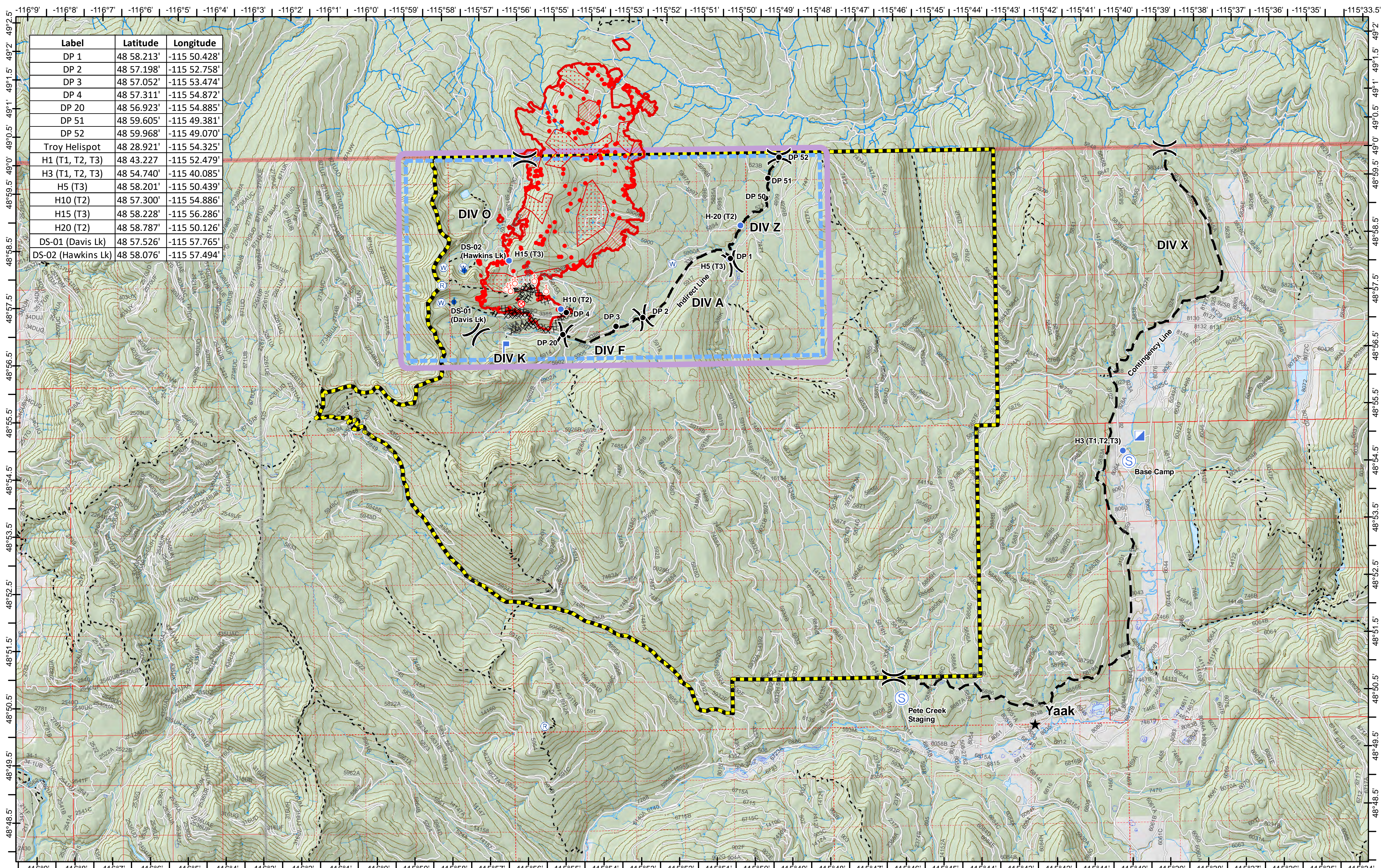


Air Operations

08/22/2018



Label	Latitude	Longitude
DP 1	48 58.213'	-115 50.428'
DP 2	48 57.198'	-115 52.758'
DP 3	48 57.052'	-115 53.474'
DP 4	48 57.311'	-115 54.872'
DP 20	48 56.923'	-115 54.885'
DP 51	48 59.605'	-115 49.381'
DP 52	48 59.968'	-115 49.070'
Troy Helispot	48 28.921'	-115 54.325'
H1 (T1, T2, T3)	48 43.227'	-115 52.479'
H3 (T1, T2, T3)	48 54.740'	-115 40.085'
H5 (T3)	48 58.201'	-115 50.439'
H10 (T2)	48 57.300'	-115 54.886'
H15 (T3)	48 58.228'	-115 56.286'
H20 (T2)	48 58.787'	-115 50.126'
DS-01 (Davis Lk)	48 57.526'	-115 57.765'
DS-02 (Hawkins Lk)	48 58.076'	-115 57.494'

Davis Fire
MT-KNF-000161
 Fire perimeter as of
 08/20/2018 2134 hrs
 6,205 Acres

- TFR
- Isolated Heat Source
- Heat Perimeter
- Intense Heat
- Scattered Heat
- Town
- Dip Site
- Drop Point
- Fire Origin
- Area Closure
- Incident Command Post
- Landmark
- Lookout
- Repeater
- Spot Fire
- Staging Area
- Water Source
- Bridge Out
- Completed Dozer Line
- Completed Hand Line
- Division Break
- Planned Fire Line
- Fuel Break

