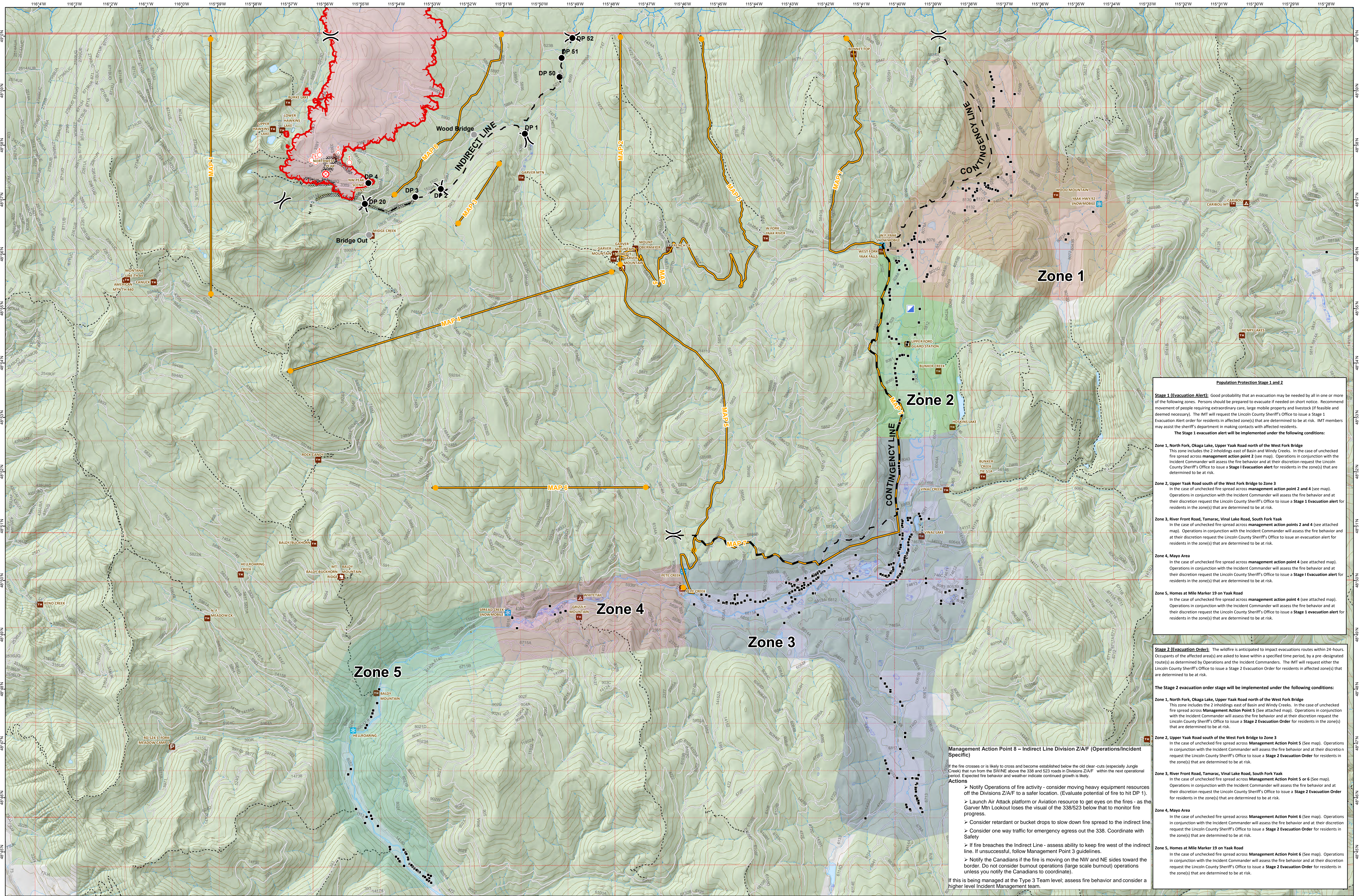


# Management Action Points / Population Protection Zones

08/22/2018



**Population Protection Stage 1 and 2**

**Stage 1 (Evacuation Alert):** Good probability that an evacuation may be needed by all in one or more of the following zones. Persons should be prepared to evacuate if needed on short notice. Recommend movement of people requiring extraordinary care, large mobile property and livestock if feasible and deemed necessary. The IMT will request the Lincoln County Sheriff's Office to issue a Stage 1 Evacuation Alert order for residents in affected zone(s) that are determined to be at risk. IMT members may assist the sheriff's department in making contacts with affected residents.

**The Stage 1 evacuation alert will be implemented under the following conditions:**

**Zone 1, North Fork, Okaga Lake, Upper Yaak Road north of the West Fork Bridge**  
This zone includes the 2 inholdings east of Basin and Windy Creeks. In the case of unchecked fire spread across management action point 2 (see map). Operations in conjunction with the Incident Commander will assess the fire behavior and at their discretion request the Lincoln County Sheriff's Office to issue a Stage 1 Evacuation alert for residents in the zone(s) that are determined to be at risk.

**Zone 2, Upper Yaak Road south of the West Fork Bridge to Zone 3**  
In the case of unchecked fire spread across management action point 2 and 4 (see map). Operations in conjunction with the Incident Commander will assess the fire behavior and at their discretion request the Lincoln County Sheriff's Office to issue a Stage 1 Evacuation alert for residents in the zone(s) that are determined to be at risk.

**Zone 3, River Front Road, Tamarac, Vinal Lake Road, South Fork Yaak**  
In the case of unchecked fire spread across management action points 2 and 4 (see attached map). Operations in conjunction with the Incident Commander will assess the fire behavior and at their discretion request the Lincoln County Sheriff's Office to issue an evacuation alert for residents in the zone(s) that are determined to be at risk.

**Zone 4, Mayo Area**  
In the case of unchecked fire spread across management action point 4 (see attached map). Operations in conjunction with the Incident Commander will assess the fire behavior and at their discretion request the Lincoln County Sheriff's Office to issue a Stage 1 Evacuation alert for residents in the zone(s) that are determined to be at risk.

**Zone 5, Homes at Mile Marker 19 on Yaak Road**  
In the case of unchecked fire spread across management action point 4 (see attached map). Operations in conjunction with the Incident Commander will assess the fire behavior and at their discretion request the Lincoln County Sheriff's Office to issue a Stage 1 Evacuation alert for residents in the zone(s) that are determined to be at risk.

**Stage 2 (Evacuation Order):** The wildfire is anticipated to impact evacuations routes within 24-hours. Occupants of the affected area(s) are asked to leave within a specified time period, by a pre-designated route(s) as determined by Operations and the Incident Commanders. The IMT will request either the Lincoln County Sheriff's Office to issue a Stage 2 Evacuation Order for residents in affected zone(s) that are determined to be at risk.

**The Stage 2 evacuation order stage will be implemented under the following conditions:**

**Zone 1, North Fork, Okaga Lake, Upper Yaak Road north of the West Fork Bridge**  
This zone includes the 2 inholdings east of Basin and Windy Creeks. In the case of unchecked fire spread across Management Action Point 5 (See attached map). Operations in conjunction with the Incident Commander will assess the fire behavior and at their discretion request the Lincoln County Sheriff's Office to issue a Stage 2 Evacuation Order for residents in the zone(s) that are determined to be at risk.

**Zone 2, Upper Yaak Road south of the West Fork Bridge to Zone 3**  
In the case of unchecked fire spread across Management Action Point 5 (See map). Operations in conjunction with the Incident Commander will assess the fire behavior and at their discretion request the Lincoln County Sheriff's Office to issue a Stage 2 Evacuation Order for residents in the zone(s) that are determined to be at risk.

**Zone 3, River Front Road, Tamarac, Vinal Lake Road, South Fork Yaak**  
In the case of unchecked fire spread across Management Action Point 5 or 6 (See map). Operations in conjunction with the Incident Commander will assess the fire behavior and at their discretion request the Lincoln County Sheriff's Office to issue a Stage 2 Evacuation Order for residents in the zone(s) that are determined to be at risk.

**Zone 4, Mayo Area**  
In the case of unchecked fire spread across Management Action Point 6 (See map). Operations in conjunction with the Incident Commander will assess the fire behavior and at their discretion request the Lincoln County Sheriff's Office to issue a Stage 2 Evacuation Order for residents in the zone(s) that are determined to be at risk.

**Zone 5, Homes at Mile Marker 19 on Yaak Road**  
In the case of unchecked fire spread across Management Action Point 6 (See map). Operations in conjunction with the Incident Commander will assess the fire behavior and at their discretion request the Lincoln County Sheriff's Office to issue a Stage 2 Evacuation Order for residents in the zone(s) that are determined to be at risk.

**Management Action Point 8 - Indirect Line Division ZIA/F (Operations/Incident Specific)**

If the fire crosses or is likely to cross and become established below the old clear-cuts (especially Jungle Creek) that run from the SWNE above the 338 and 523 roads to Divisions ZIA/F within the next operational period. Expected fire behavior and weather indicate continued growth is likely.

**Actions**

- Notify Operations of fire activity - consider moving heavy equipment resources off the Divisions ZIA/F to a safer location. (Evaluate potential of fire to hit DP 1)
- Launch Air Attack platform or Aviation resource to get eyes on the fires - as the Garver Mtn Lookout loses the visual of the 338/523 below that to monitor fire progress.
- Consider retardant or bucket drops to slow down fire spread to the indirect line. If unsuccessful, follow Management Point 3 guidelines.
- Consider one way traffic for emergency egress out the 338. Coordinate with Safety
- If fire breaches the Indirect Line - assess ability to keep fire west of the indirect line. If unsuccessful, follow Management Point 3 guidelines.
- Notify the Canadians if the fire is moving on the NW and NE sides toward the border. Do not consider burnout operations (large scale burnout) operations unless you notify the Canadians to coordinate.

If this is being managed at the Type 3 Team level, assess fire behavior and consider a higher level Incident Management team.

<b>Davis Fire</b>	<b>Zone 1</b>	Includes Okaga Lake, North Fork and Upper Yaak after West Fork bridge
<b>MT-KNF-000161</b>	<b>Zone 2</b>	Includes Upper Yaak before West Fork bridge
Fire perimeter as of 08/22/2018 0106 hrs 6,365 Acres	<b>Zone 3</b>	Includes Riverfront Road, Tamarac, Vinal Lake Rd, South Fork and Yaak proper
	<b>Zone 4</b>	Mayo residence areas
	<b>Zone 5</b>	All areas south of Zone 4 including Mile Marker 19 & below.

<ul style="list-style-type: none"> <li>Structure</li> <li>Incident Command Post</li> <li>Drop Point</li> <li>Fire Origin</li> <li>Division Break</li> </ul>	<ul style="list-style-type: none"> <li>Uncontrolled Fire Edge</li> <li>Completed Dozer Line</li> <li>Completed Hand Line</li> <li>Planned Fire Line</li> <li>Management Action Point</li> </ul>	<ul style="list-style-type: none"> <li>Wildfire Daily Fire Perimeter</li> <li>Fuel Break</li> </ul>				
---	---	---	--	--	--	--