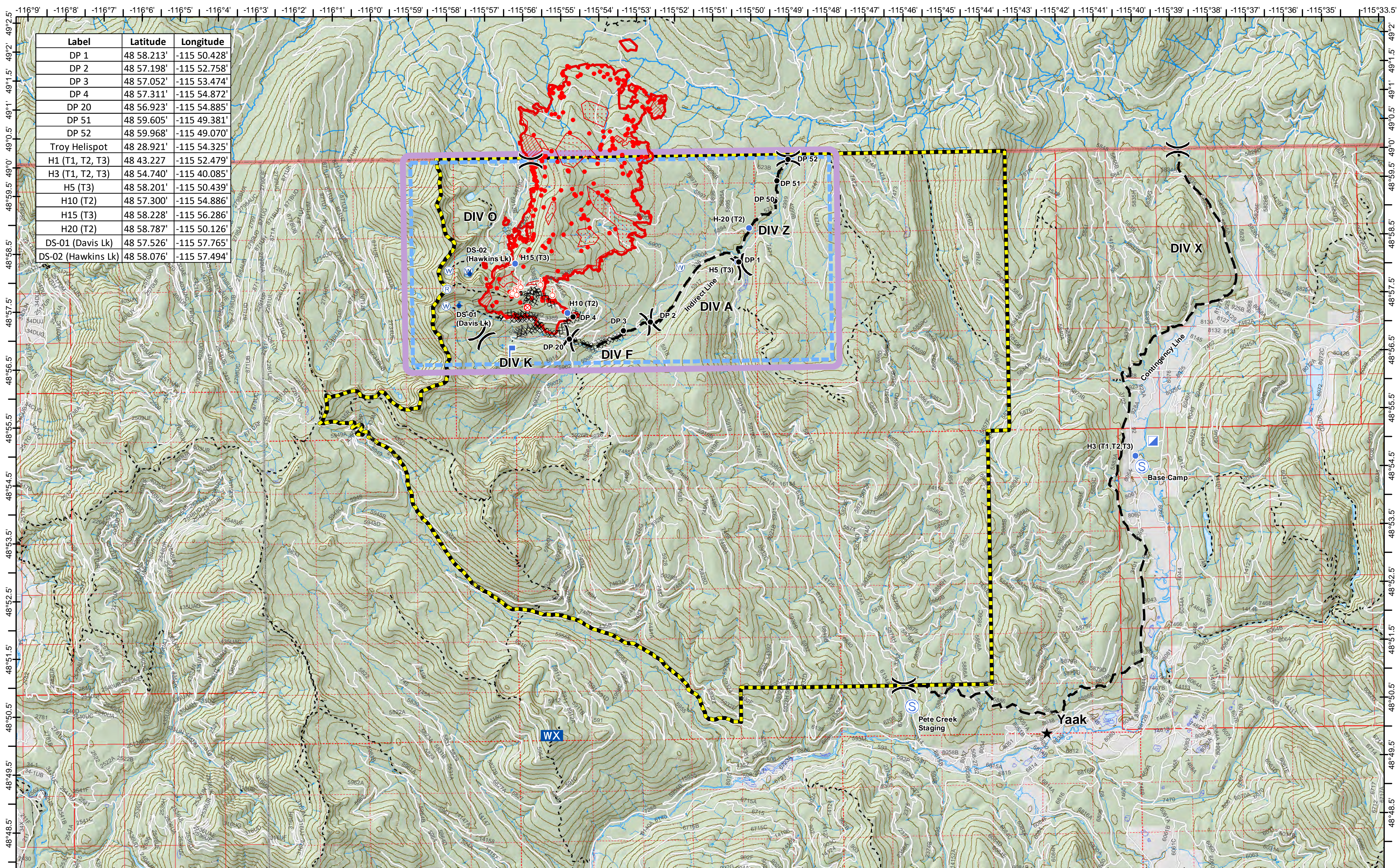


Label	Latitude	Longitude
DP 1	48 58.213'	-115 50.428'
DP 2	48 57.198'	-115 52.758'
DP 3	48 57.052'	-115 53.474'
DP 4	48 57.311'	-115 54.872'
DP 20	48 56.923'	-115 54.885'
DP 51	48 59.605'	-115 49.381'
DP 52	48 59.968'	-115 49.070'
Troy Helispot	48 28.921'	-115 54.325'
H1 (T1, T2, T3)	48 43.227'	-115 52.479'
H3 (T1, T2, T3)	48 54.740'	-115 40.085'
H5 (T3)	48 58.201'	-115 50.439'
H10 (T2)	48 57.300'	-115 54.886'
H15 (T3)	48 58.228'	-115 56.286'
H20 (T2)	48 58.787'	-115 50.126'
DS-01 (Davis Lk)	48 57.526'	-115 57.765'
DS-02 (Hawkins Lk)	48 58.076'	-115 57.494'



Davis Fire

MT-KNF-000161

Fire perimeter as of
08/22/2018 2201 hrs
6,452 Acres

- Isolated Heat
- Heat Perimeter
- Intense Heat
- Scattered Heat
- TFR
- Area Closure
- Fuel Break
- ★ Town
- ⊕ Fire Origin
- ⬇ Dip Site
- Helispot
- Drop Point
- ⬆ Lookout
- WX Mobile Weather Unit
- Ⓜ Repeater
- Ⓢ Staging Area
- Ⓜ Water Source
- Ⓜ Spot Fire
- Ⓜ Staging Area
- Ⓜ Water Source
- Ⓜ Division Break
- Ⓜ Completed Hand Line
- Ⓜ Planned Fire Line
- Ⓜ Completed Dozer Line
- Ⓜ Aerial Retardant Drop

