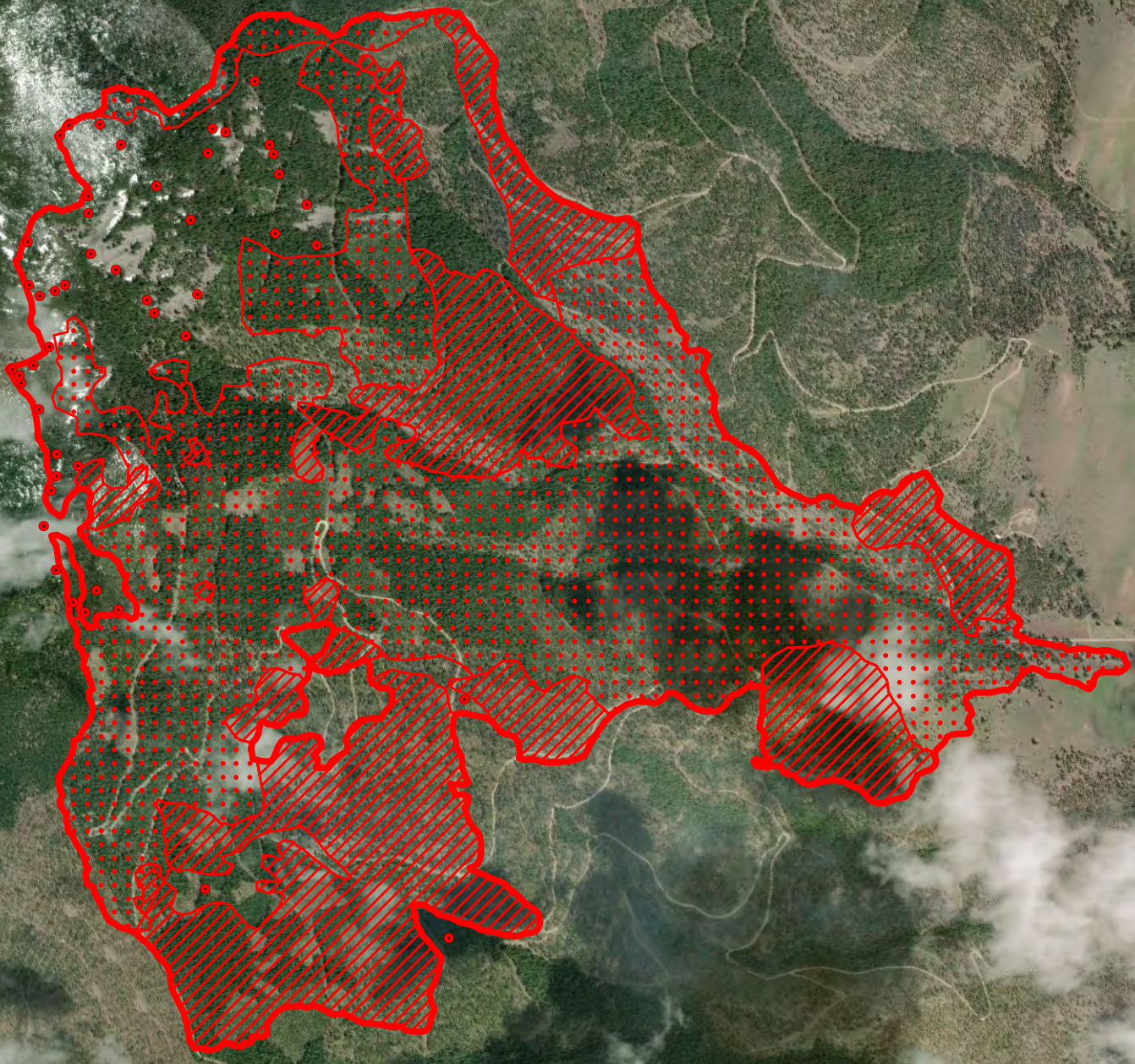
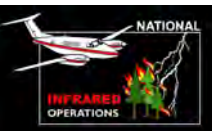
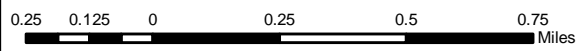


114°45'W

Infrared Map
Garden Creek (MT-FHA-000161)
Map Date: 08/09/2018
Imagery Date: 08/08/2018
Imagery Time: 2218 MDT
IR Interpreted Acres: 2,018 acres
IRIN: Tina Rotenbury

- Isolated Heat Sources
- Heat Perimeter
- Intense Heat
- Scattered Heat

WGS 1984 UTM Zone 11N



47°40'N

47°40'N

Source: Esri, DigitalGlobe, GeoEye, Earthstar Geographics, CNES/Airbus DS, USDA, USGS, AeroGRID, IGN, and the GIS User Community

114°45'W