

## INFRARED INTERPRETER'S DAILY LOG

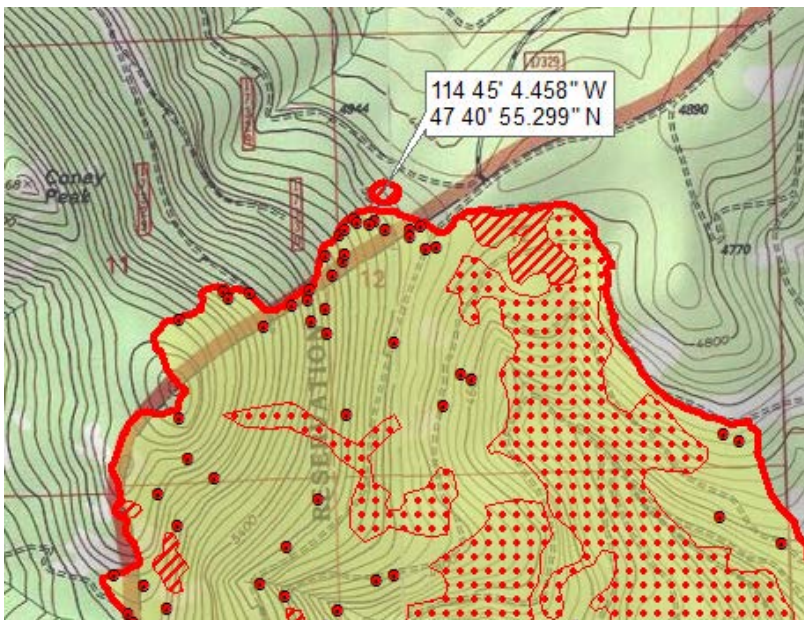
<b>Incident Name:</b> Garden Creek MT-FHA-000161	<b>IR Interpreter(s):</b> Tina Rotenbury trotenbury@fs.fed.us	<b>Local Dispatch Phone:</b> 406-829-7070 Missoula Dispatch	<b>Interpreted Size:</b> 2,052 Acres <b>Growth:</b> 7 Acres
<b>Flight Time:</b> 2227 (MDT) <b>Flight Date:</b> 08/10/2018	<b>Interpreter(s) location:</b> Russellville, AR <b>Interpreter(s) Phone:</b> 479-967-8681 (landline) 479-886-0878 (cell)	<b>GACC IR Liaison:</b> Tim Stauffer <b>GACC IR Liaison Phone:</b> 406-529-6366	<b>National Coordinator:</b> Tom Mellin <b>National Coord. Phone:</b> 505-301-8167
<b>Ordered By:</b> Missoula Dispatch 406-829-7070	<b>A Number:</b> A-28	<b>Aircraft/Scanner System:</b> N149Z / Phoenix	<b>Pilots/Techs:</b> Johnson/DeHaas/Kazimir
<b>IRIN Comments on imagery:</b> 1 pass, Ortho and Color flown.		<b>Weather at time of flight:</b> Clear	<b>Flight Objective:</b> Identify and map Heat perimeter, Scattered Heat and Isolated Heat Sources.
<b>Date and Time Imagery Received by Interpreter:</b> 08/10/2018 – 2236 (MDT)		<b>Type of media for final product:</b> Shape files, KMZ, PDF, and IRIN Log	
<b>Date and Time Products Delivered to Incident:</b> 08/11/2018 –0005 (MDT)		<b>Digital files sent to: NIFC FTP @</b> <a href="https://ftp.nifc.gov/public/incident_specific_data/n_rockies/2018_fires/2018_GardenCreek/IR/20180811">https://ftp.nifc.gov/public/incident_specific_data/n_rockies/2018_fires/2018_GardenCreek/IR/20180811</a>	

**Comments /notes on tonight's mission and this interpretation:**

I started my interpretation with the 08/10/2018 IR fire perimeter. New growth - 7 acres.

Yellow is 8/10/2018's IR perimeter. Red line is current IR heat perimeter.

Only minor exterior perimeter growth. Have a spot over on the north perimeter, with intense heat. The poly in the middle closed in completely tonight. There is scattered, intense and isolated heat throughout perimeter.



## INFRARED INTERPRETER'S DAILY LOG

There is scattered and isolated heat throughout the interior of the fire. Patches of intense heat on the NE, W, and SW side of fire.

