

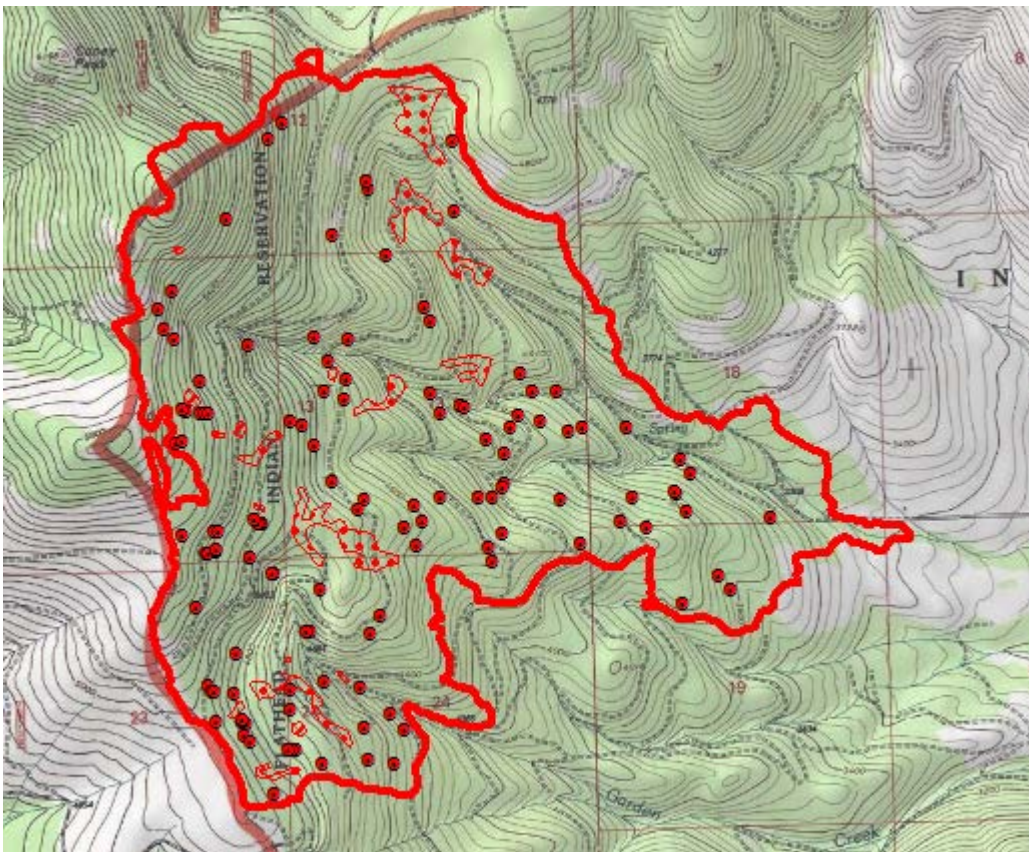
INFRARED INTERPRETER'S DAILY LOG

Incident Name: Garden Creek MT-FHA-000161	IR Interpreter(s): Tina Rotenbury trotenbury@fs.fed.us	Local Dispatch Phone: 406-829-7070 Missoula Dispatch	Interpreted Size: 2,053 Acres Growth: 0 Acres
Flight Time: 2234 (MDT) Flight Date: 08/13/2018	Interpreter(s) location: Russellville, AR Interpreter(s) Phone: 479-967-8681 (landline) 479-886-0878 (cell)	GACC IR Liaison: Tim Stauffer GACC IR Liaison Phone: 406-529-6366	National Coordinator: Jan Johnson National Coord. Phone: 208-387-5900 208-870-5066 Cell
Ordered By: Missoula Dispatch 406-829-7070	A Number: A-30	Aircraft/Scanner System: N149Z / Phoenix	Pilots/Techs: Boyce/DeHaas/Kazimir-Brantlinger
IRIN Comments on imagery: 1 pass, Ortho and Color flown.		Weather at time of flight: Clear	Flight Objective: Identify and map Heat perimeter, Scattered Heat and Isolated Heat Sources.
Date and Time Imagery Received by Interpreter: 08/13/2018 – 2240 (MDT)		Type of media for final product: Shape files, KMZ, PDF, and IRIN Log	
Date and Time Products Delivered to Incident: 08/13/2018 –2340 (MDT)		Digital files sent to: NIFC FTP @ https://ftp.nifc.gov/public/incident_specific_data/n_rockies/2018_fires/2018_GardenCreek/IR/20180814	

Comments /notes on tonight's mission and this interpretation:

I started my interpretation with the 08/13/2018 IR fire perimeter. New growth - 0 acres.

No perimeter growth. There are small pockets of scattered and intense heat as well as some isolated heat throughout perimeter. It's cooling down.



INFRARED INTERPRETER'S DAILY LOG

Small pockets of intense heat still showing on the west side and south west corner.

